



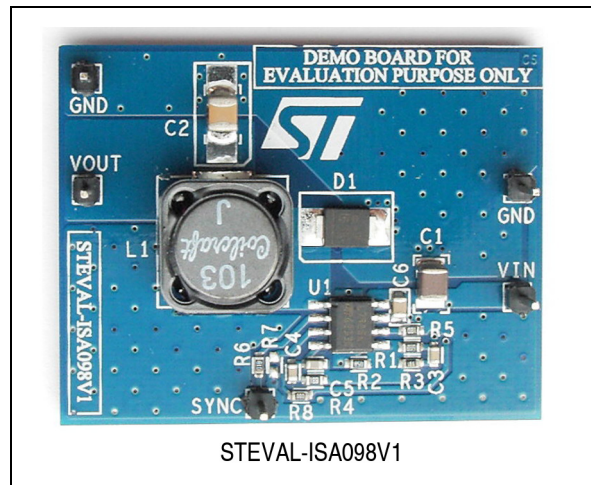
STEVAL-ISA098V1

2 A step-down switching demonstration board based on the L7985A in HSOP8 package in HSOP8 package

Data brief

Features

- 2 A DC output current
- From 4.5 V to 38 V range input voltage
- Output voltage adjustable from 0.6 V
- 250 kHz switching frequency programmable up to 1 MHz
- Internal soft-start and enable
- Low dropout operation: 100% duty cycle
- Voltage feed-forward
- Zero load current operation
- Overcurrent and thermal protection
- RoHS compliant



STEVAL-ISA098V1

Description

The STEVAL-ISA098V1 demonstration board is a step-down switching power supply based on the L7985A in HSOP8 package.

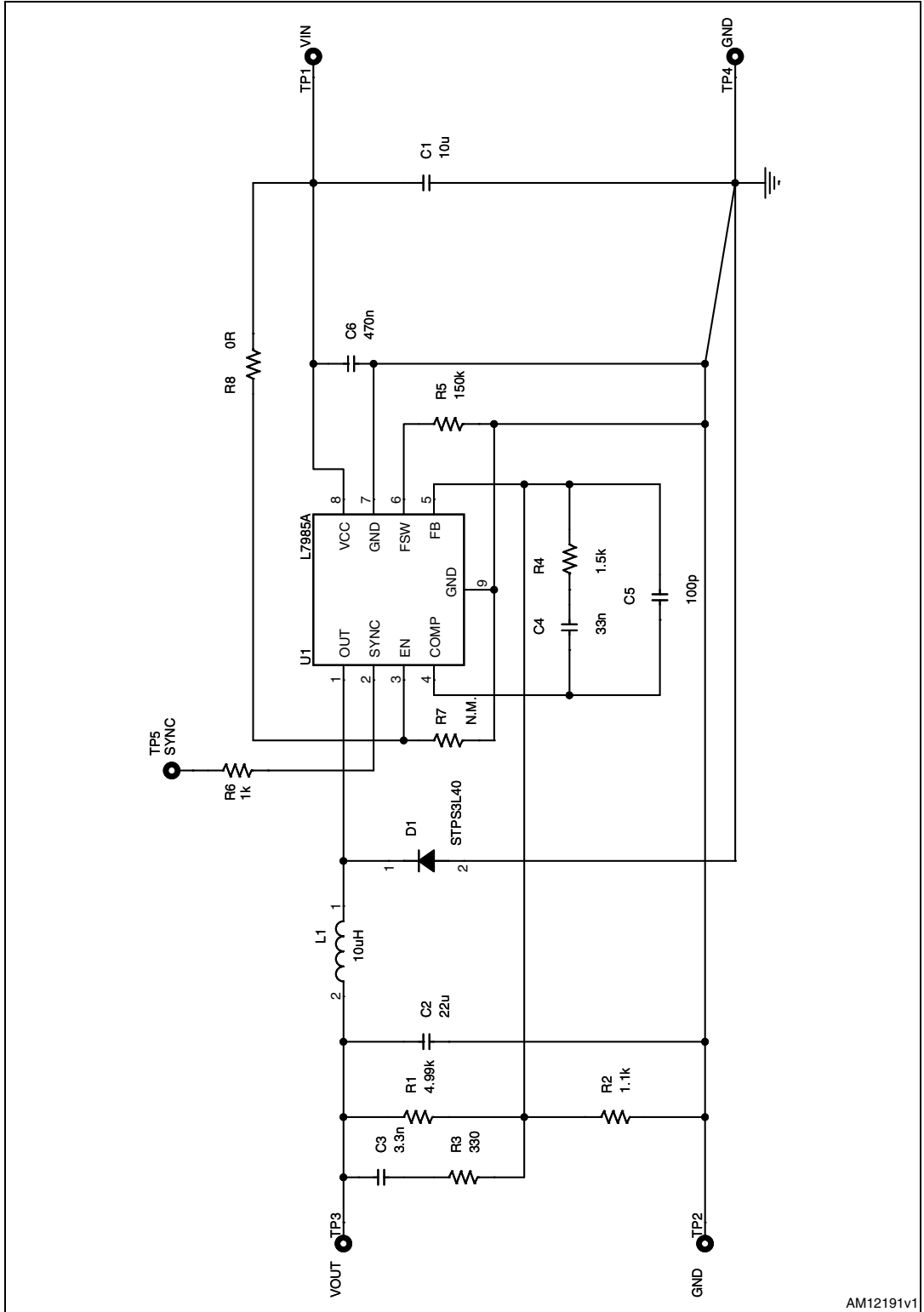
The L7985A is a step-down regulator with a 2.5 A (minimum) current limited embedded power MOSFET, so it is able to deliver up to 2 A current to the load depending on the application conditions.

The input voltage can range from 4.5 V to 38 V, while the output voltage can be set starting from 0.6 V to V_{IN} .

Requiring a minimum set of external components, the device includes an internal 250 kHz switching frequency oscillator that can be externally adjusted up to 1 MHz.

1 Schematic diagram

Figure 1. Schematic diagram



AM12191v1

2 Revision history

Table 1. Document revision history

Date	Revision	Changes
27-Apr-2012	1	Initial release.