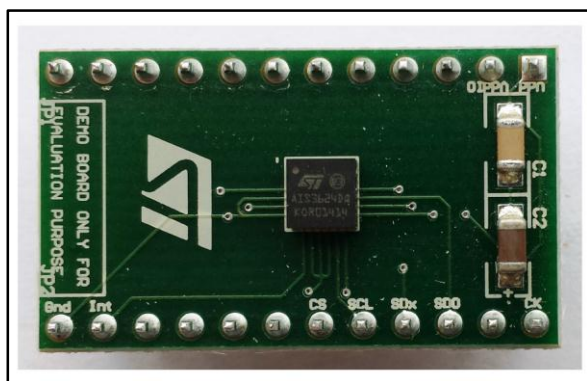


AIS3624DQ adapter board for a standard DIL24 socket



Features

- Complete AIS3624DQ pin-out for a standard DIL24 socket
- Fully compatible with STEVAL-MKI109V2 motherboard
- RoHS compliant

Description

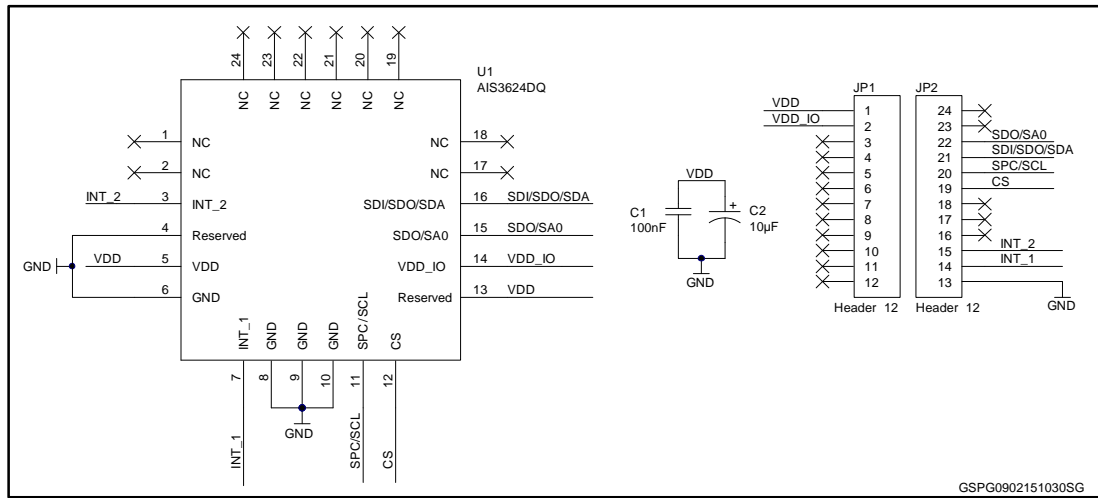
The STEVAL-MKI158V1 is an adapter board designed to facilitate the evaluation of MEMS inertial devices in the AIS3624DQ product family. The board offers an effective solution for fast system prototyping and device evaluation directly within the user's own application.

The STEVAL-MKI158V1 can be plugged into a standard DIL24 socket. The adapter provides the complete AIS3624DQ pinout and comes ready-to-use with the required decoupling capacitors on the V_{DD} power supply line.

This adapter is supported by STEVAL-MKI109V2 motherboard which includes a high performance 32-bit microcontroller functioning as a bridge between the sensor and a PC, on which it is possible to use the downloadable graphical user interface (Unico GUI), or dedicated software routines for customized applications.

1 Schematic diagram

Figure 1: STEVAL-MKI158V1 circuit schematic



2 Revision history

Table 1: Document revision history

Date	Rev	Changes
26-Feb-2015	1	First release.