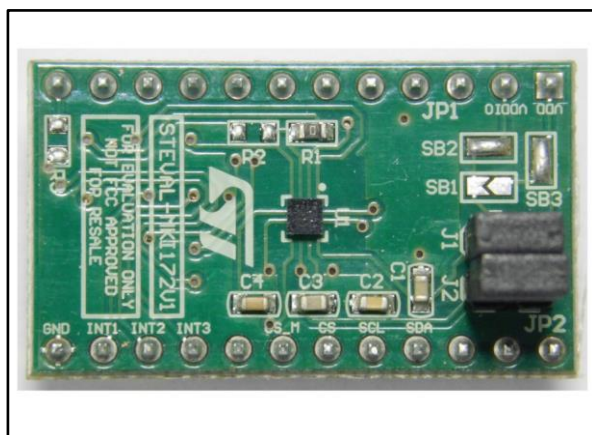


LSM303AGR adapter board for a standard DIL 24 socket

Data brief



Features

- Complete LSM303AGR pinout for a standard DIL 24 socket
- Fully compatible with the STEVAL-MKI109V2 and STEVAL-MKI109V3 motherboards
- RoHS compliant

Description

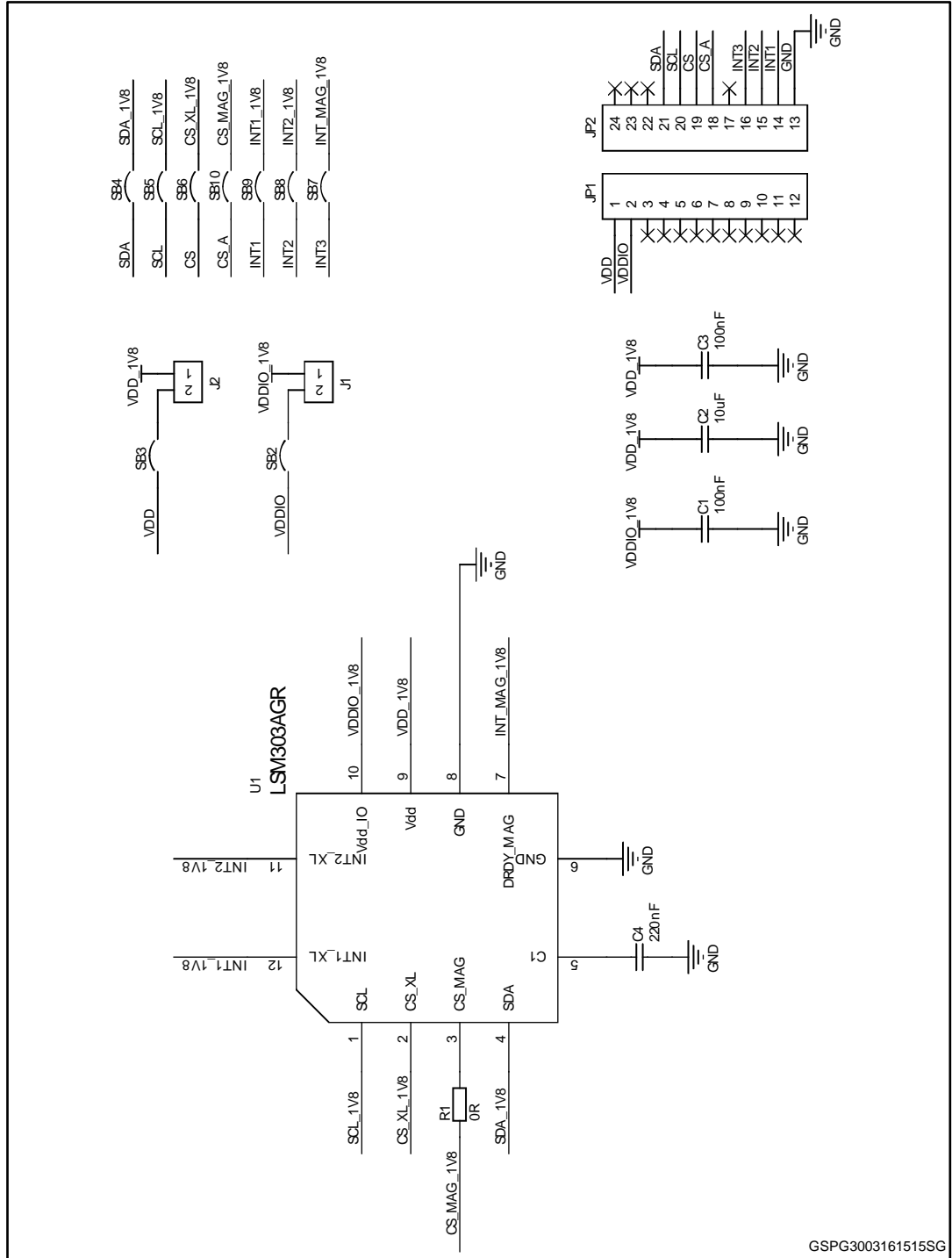
The STEVAL-MKI172V1 is an adapter board designed to facilitate the evaluation of MEMS devices in the LSM303AGR product family. The board offers an effective solution for fast system prototyping and device evaluation directly within the user's own application.

The STEVAL-MKI172V1 can be plugged into a standard DIL 24 socket. The adapter provides the complete LSM303AGR pinout and comes ready-to-use with the required decoupling capacitors on the V_{DD} power supply line.

This adapter is supported by the STEVAL-MKI109V2 and STEVAL-MKI109V3 motherboards which include a high performance 32-bit microcontroller functioning as a bridge between the sensor and a PC, on which it is possible to use the downloadable graphical user interface (Unico GUI), or dedicated software routines for customized applications.

Schematic diagram

Figure 1: STEVAL-MKI172V1 circuit schematic



GSPG3003161515SG

Revision history

Table 1: Document revision history

Date	Version	Changes
31-Mar-2016	1	Initial release
06-Sep-2016	2	Updated features and description adding STEVAL-MKI109V3 motherboard compatibility