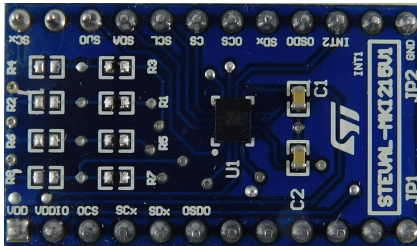


LSM6DSO32 adapter board for a standard DIL24 socket



Features

- Complete LSM6DSO32 pinout for a standard DIL 24 socket
- Fully compatible with STEVAL-MKI109V3 motherboards
- RoHS compliant

Description

The [STEVAL-MKI215V1](#) is an adapter board designed to facilitate the evaluation of MEMS devices in the [LSM6DSO32](#) product family. The board offers an effective solution for fast system prototyping and device evaluation directly within the user's own application.

The [STEVAL-MKI215V1](#) can be plugged into a standard DIL 24 socket. The adapter provides the complete LSM6DSO32 pin-out and comes ready-to-use with the required decoupling capacitors on the VDD power supply line.

This adapter is supported by the [STEVAL-MKI109V3](#) motherboard with high performance 32-bit microcontroller functioning as a bridge between the sensor and a PC, on which it is possible to use the downloadable graphical user interface (Unico GUI), or dedicated software routines for customized applications.

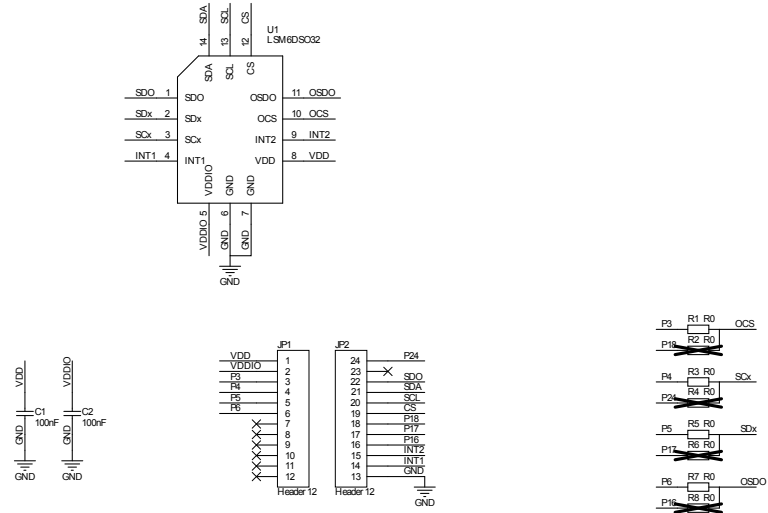
The adapter board can be also plugged into following boards: [X-NUCLEO-IKS01A2](#), [X-NUCLEO-IKS01A1](#) and [X-NUCLEO-IKS01A3](#).

Product summary

LSM6DSO32 adapter board for a standard DIL24 socket	STEVAL-MKI215V1
iNEMO inertial module: always-on 3D accelerometer and 3D gyroscope	LSM6DSO32
ST MEMS adapter motherboard based on STM32F401VE compatible ST MEMS adapters	STEVAL-MKI109V3
Applications	Metering

1 Schematic diagram

Figure 1. STEVAL-MKI215V1 board schematic



Revision history

Table 1. Document revision history

Date	Version	Changes
06-May-2020	1	Initial release.
23-Jul-2020	2	Updated cover image.
10-May-2021	3	Updated schematic. Updated product summary.