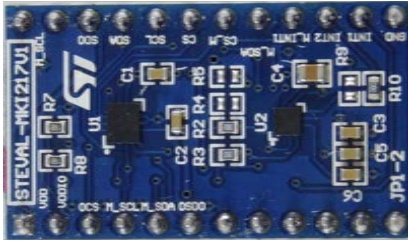


Adapter board for standard DIL24 socket based on LSM6DSOX and LIS2MDL in sensor hub mode



Features

- Complete LSM6DSOX and LIS2MDL pinout for a standard DIL 24 socket
- Fully compatible with the STEVAL-MKI109V3 motherboard
- RoHS compliant

Description

The **STEVAL-MKI217V1** is an adapter board designed to facilitate the evaluation of MEMS devices (**LSM6DSOX** and **LIS2MDL**) connected in sensor hub mode. The board offers an effective solution for fast system prototyping and device evaluation directly within the user's own application.

The **STEVAL-MKI217V1** can be plugged into a standard DIL 24 socket.

The adapter provides the complete LSM6DSOX and LIS2MDL pin-out and comes ready-to-use with the required decoupling capacitors on the VDD power supply line.

This adapter is supported by the **STEVAL-MKI109V3** motherboard with high performance 32-bit microcontroller functioning as a bridge between the sensor and a PC, on which it is possible to use the downloadable graphical user interface (Unico GUI), or dedicated software routines for customized applications.

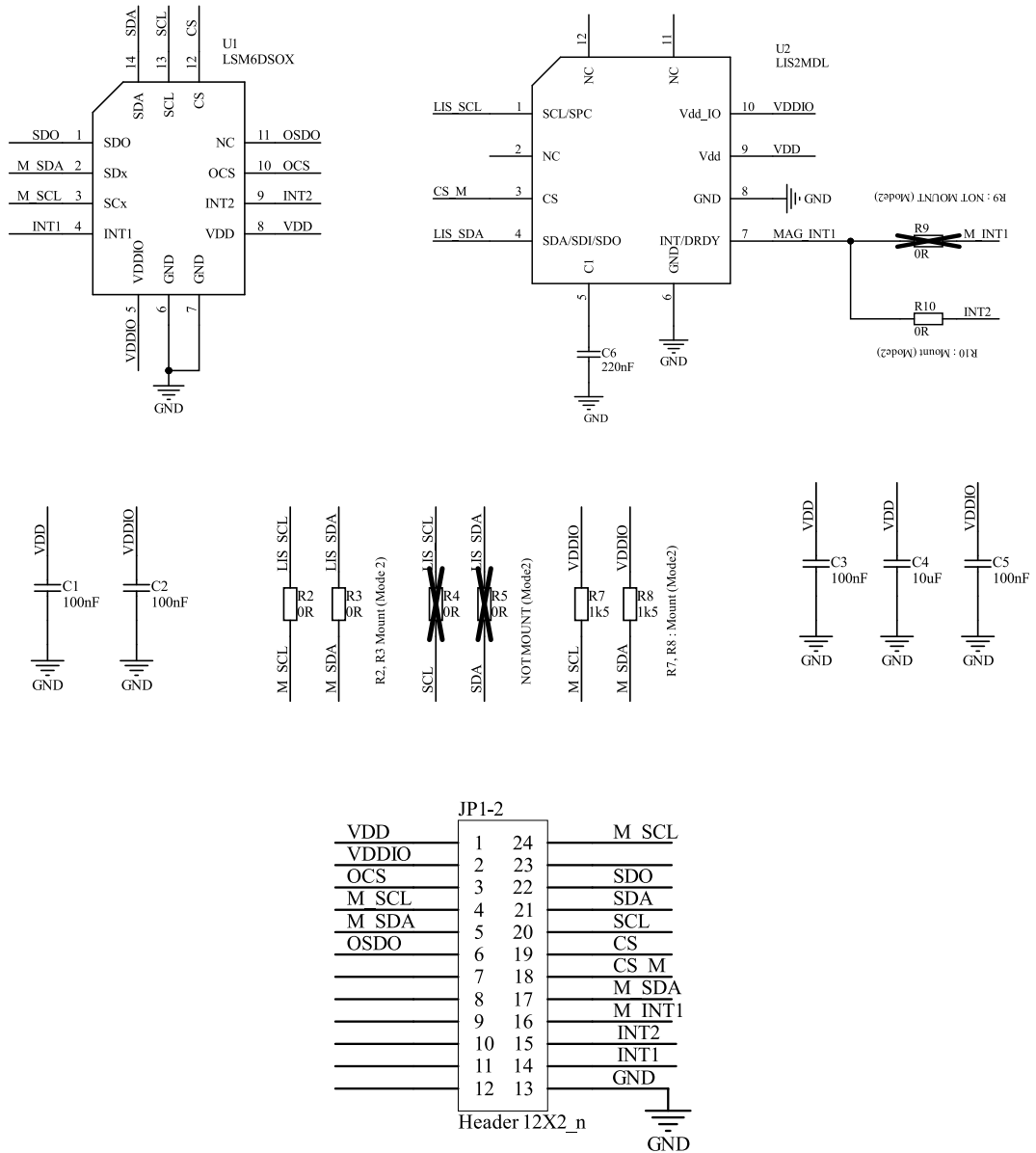


Product summary

Adapter board for standard DIL24 socket based on LSM6DSOX and LIS2MDL in sensor hub mode	STEVAL-MKI217V1
iNEMO 6DoF inertial module	LSM6DSOX
digital 3-axis magnetometer	LIS2MDL
ST MEMS adapter motherboard based on STM32F401VE compatible ST MEMS adapters	STEVAL-MKI109V3
Application	IoT for Smart Things

1 Schematic diagrams

Figure 1. STEVAL-MKI217V1 board schematic



Revision history

Table 1. Document revision history

Date	Version	Changes
11-Nov-2020	1	Initial release.
04-Feb-2021	2	Some edit change to improve readability.