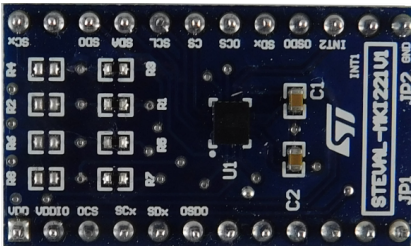


LSM6DSO32X adapter board for a standard DIL 24 socket



Features

- Complete LSM6DSO32X pin-out for a standard DIL 24 socket
- Fully compatible with STEVAL-MKI109V3 motherboard
- Compatible with STEVAL-MKI109V2 by changing resistor settings
- RoHS compliant

Description

The STEVAL-MKI221V1 is an adapter board which allows evaluation of MEMS devices inside the LSM6DSO32X product family.

The board offers an effective solution for fast system prototyping and device evaluation directly within the user's application.

The STEVAL-MKI221V1 can be plugged into a standard DIL 24 socket. The adapter provides the complete LSM6DSO32X pin-out and comes ready-to-use with the required decoupling capacitors on the VDD power supply line.

This adapter is supported by the STEVAL-MKI109V3 motherboard.

A high performance 32-bit microcontroller, functioning as a bridge between the sensor and a PC, is included.

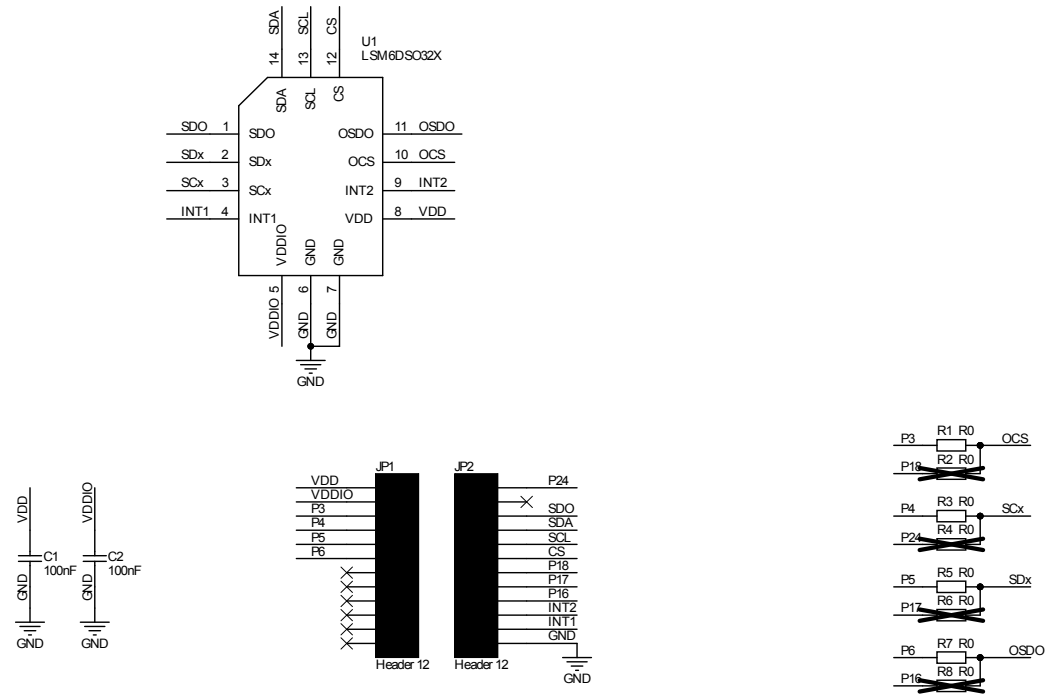
It is possible to use the downloadable graphical user interface (Unico-GUI) or dedicated software routines for customized applications.

The adapter board can also be plugged into the X-NUCLEO-IKS01A2, X-NUCLEO-IKS01A3 and X-NUCLEO-IKS02A1 expansion boards.

Product summary	
LSM6DSO32X adapter board for a standard DIL 24 socket	STEVAL-MKI221V1
iNEMO inertial module: always-on 3D accelerometer and 3D gyroscope	LSM6DSO32X
MEMS adapter motherboard based on the STM32F401VE	STEVAL-MKI109V3
Motion MEMS and environmental sensor expansion board for STM32 Nucleo	X-NUCLEO-IKS01A3
Applications	Sports Equipment

1 Schematic diagrams

Figure 1. STEVAL-MKI221V1 circuit schematic



Revision history

Table 1. Document revision history

Date	Revision	Changes
07-Apr-2021	1	Initial release.