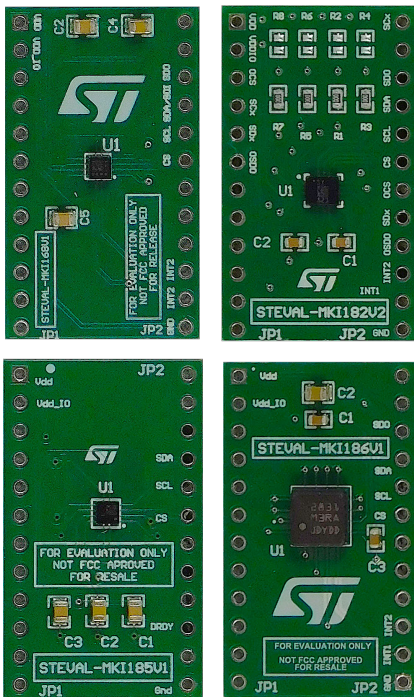


Industrial MEMS sensors sample kit



Features

- [STEVAL-MKI185V1](#) adapter board for [IIS2MDC](#):
 - high accuracy, ultra-low-power, 3-axis digital output magnetometer
- [STEVAL-MKI168V1](#) adapter board for [IIS2DH](#):
 - 3-axis digital accelerometer, ultra low-power high performance MEMS motion sensor
- [STEVAL-MKI182V2](#) adapter board for [ISM330DLC](#):
 - iNEMO inertial module, 3-axis accelerometer, 3-axis gyroscope for Industry 4.0 applications
- [STEVAL-MKI186V1](#) adapter board for [IIS3DHHC](#):
 - high resolution, high stability 3-axis digital accelerometer for industrial applications

Description

The STEVAL-MKIT02V1 is a MEMS sensor sample kit containing four sensor adapter boards that can be evaluated in standalone mode by simply connecting an I²C cable (except for the [STEVAL-MKI186V1](#) and the [IIS3DHHC](#) where only the SPI connector is present).

The [STEVAL-MKI109V3](#) evaluation board, based on the [STM32F401VET6](#) microcontroller, can be used for a more in-depth evaluation, as a bridge between the sensor adapter boards and a PC running STMicroelectronics graphical user interface (GUI) or an X-NUCLEO expansion board.

Product summary	
IIS2DH adapter board for a standard DIL 24 socket	STEVAL-MKI168V1
ISM330DLC adapter board for a standard DIL24 socket	STEVAL-MKI182V2
IIS2MDC adapter board for a standard DIL24 socket	STEVAL-MKI185V1
IIS3DHHC adapter board for a standard DIL 24 socket	STEVAL-MKI186V1

Revision history

Table 1. Document revision history

Date	Version	Changes
12-Apr-2018	1	Initial release.
13-Sep-2019	2	Minor text edits.