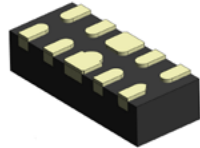


STN254050UL50 and STN254050UL50H TVS Diode array ESD suppressor



Product features

- Solid-state silicon-avalanche technology
- Up to four I/O lines of protection
- Low operating voltage
- Ultra low capacitance: 0.25 pF typical (I/O to I/O)
- Low operating and clamping voltage
- Low leakage current
- High ESD withstand option available
- Meets moisture sensitivity level (MSL) 3
- Molding compound flammability rating: UL 94V-0
- Termination finish: Ni/Pd/Au

Applications

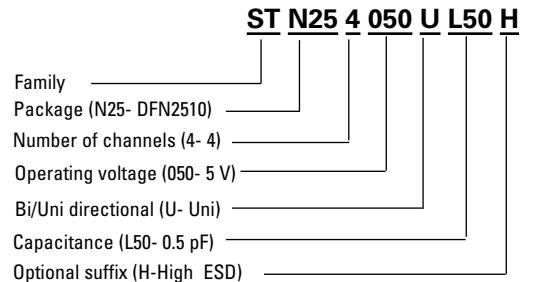
- Digital visual interface (DVI)
- Display port TM interface
- MDDI ports
- PCI express
- SATA interfaces
- High definition multi-media interface (HDMI)

Environmental compliance and general specifications

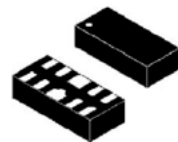
- IEC61000-4-2 (ESD)
 - Up to ± 20 kV (air)
 - Up to ± 20 kV (contact)
- IEC61000-4-5 (Lightning) 5 A (8/20 μ s)



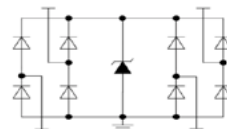
Ordering part number



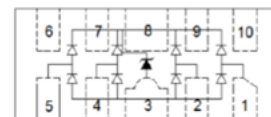
Pin out/functional diagram



DFN2510-10L



Pin configuration



Top view

Absolute maximum ratings

(+25 °C, RH=45%-75%, unless otherwise noted)

Parameter	Symbol	Value		Unit
		STN254050UL50H	STN254050UL50	
Peak pulse power dissipation on 8/20 μs waveform	P _{pp}	100	100	W
ESD per IEC 61000-4-2 (Air)	V _{ESD}	+/-20	+/-15	kV
ESD per IEC 61000-4-2 (Contact)		+/-20	+/-8	
Lead soldering temperature	T _L	+260 (10 seconds)	+260 (10 seconds)	°C
Operating junction temperature range	T _J	-55 to +125	-55 to +125	°C
Storage temperature range	T _{STG}	-55 to +150	-55 to +150	°C

Electrical characteristics

(+25 °C)

STN254050UL50H

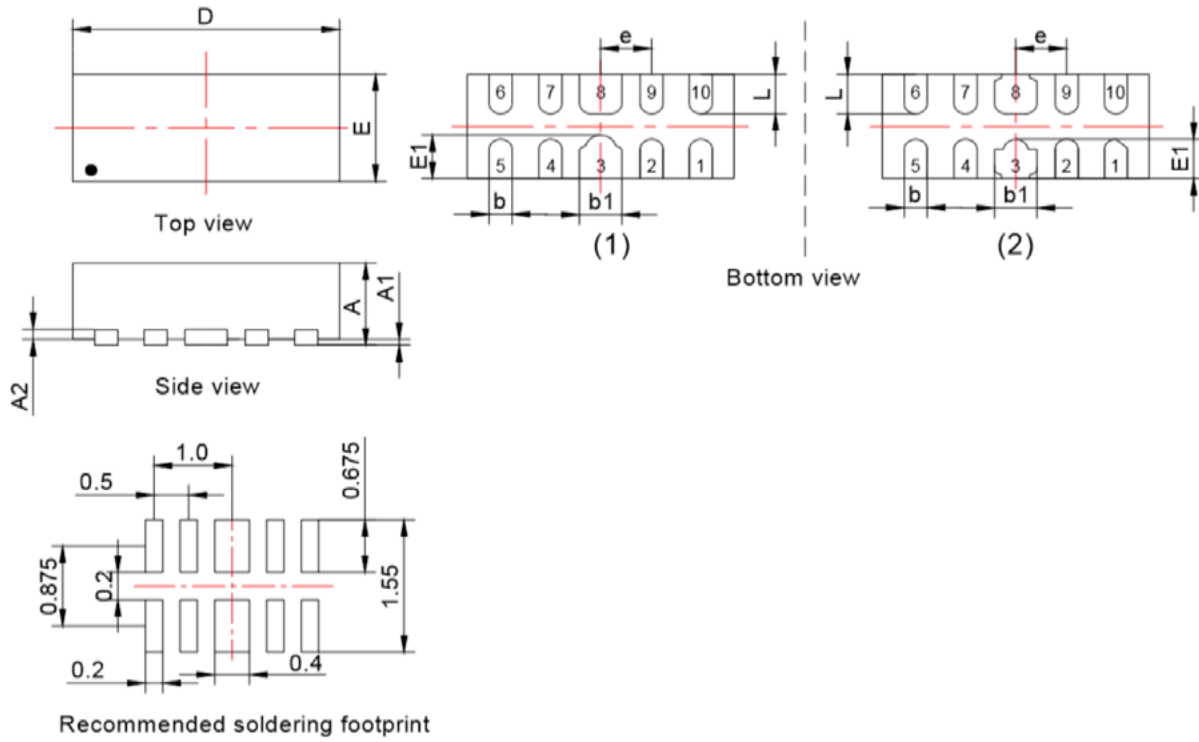
Parameter	Test condition	Minimum	Typical	Maximum	Symbol (Units)
Reverse working voltage	I/O to GND	-	-	5	V _{RWM} (V)
Reverse breakdown voltage	I/O to GND I _T = 1 mA	6.0	-	8.5	V _{BR} (V)
Reverse leakage current	I/O to GND V _{RWM} = 5 V	-	-	0.5	I _R (μA)
Clamping voltage*	I _{pp} = 1 A, t _p = 8/20 μs	-	9.5	10.5	V _C (V)
	I _{pp} = 5 A, t _p = 8/20 μs	-	13	15	V _C (V)
	-	-	-	-	-
Junction capacitance	V _{RWM} = 0 V, f = 1 MHz I/O pin to GND	-	0.5	0.65	C _J (pF)
	V _{RWM} = 0 V, f = 1 MHz Between I/O pins	-	0.25	0.35	C _J (pF)

STN254050UL50

Parameter	Test condition	Minimum	Typical	Maximum	Symbol (Units)
Reverse working voltage	I/O to GND	-	-	5.0	V _{RWM} (V)
Reverse breakdown voltage	I/O to GND I _T = 1 mA	6.0	-	9.0	V _{BR} (V)
Reverse leakage current	I/O to GND V _{RWM} = 5.0 V	-	0.1-	1.0-	I _R (μA)
Clamping voltage*	I _{pp} = 1 A, t _p = 8/20 μs	-	9.0	6.5	V _C (V)
	I _{pp} = 3.5 A, t _p = 8/20 μs	-	11	12	V _C (V)
Junction capacitance	V _{RWM} = 0 V, f = 1 MHz I/O pin to GND	-	0.5	0.65	C _J (pF)
	V _{RWM} = 0 V, f = 1 MHz Between I/O pins	-	0.25	0.4	C _J (pF)

* Non-repetitive current pulse, according to IEC61000-4-5.

Mechanical parameters, pad layout- mm



Dimension	Millimeters			Inches		
	Minimum	Typical	Maximum	Minimum	Typical	Maximum
A	0.45	-	0.65	0.018	-	0.026
A1	0.00	-	0.05	0.000	-	0.002
A2		0.150 REF			0.006 REF	
b	0.15	0.20	0.25	0.006	0.008	0.010
b1	0.35	0.40	0.45	0.014	0.016	0.018
D	2.45	2.50	2.55	0.096	0.098	0.100
E	0.95	1.00	1.05	0.037	0.039	0.041
E1	0.30	0.455	0.61	0.012	0.018	0.024
e		0.50 BSC			0.020 BSC	
L	0.33	-	0.45	0.013	-	0.018

Part marking



(STN254050UL50H)

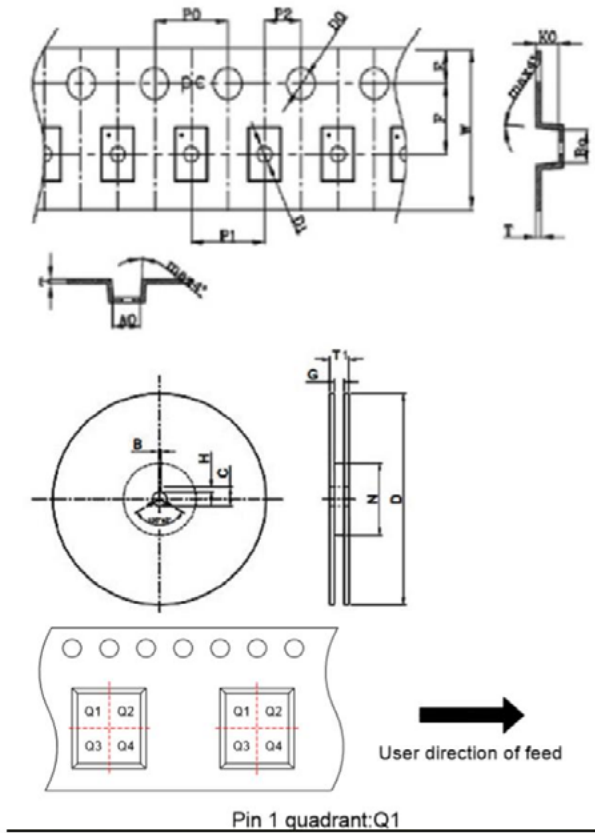


(STN254050UL50)

Packaging information mm/inches

Drawing not to scale.

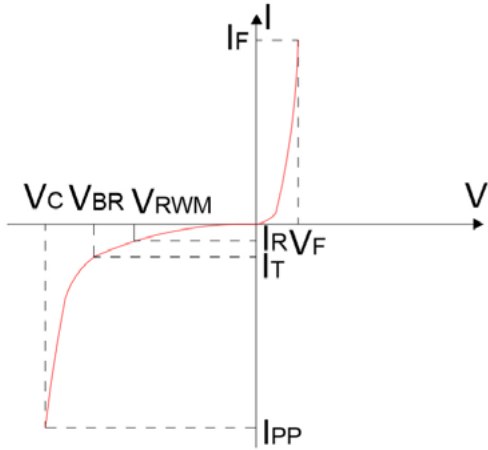
Supplied in tape and reel packaging, 3,000 parts per 7" EIA-481 diameter reel



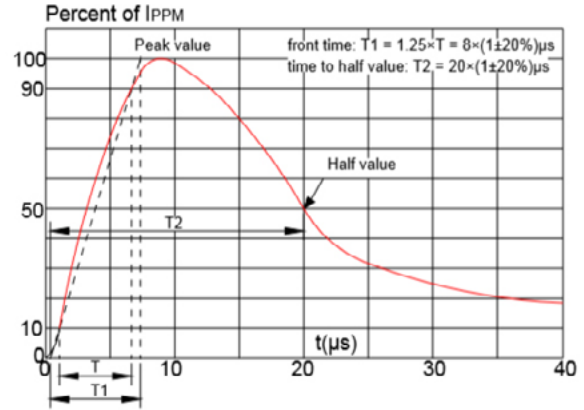
Symbol	Dimensions	
	Millimeters	Inches
A0	1.15±0.05	0.045±0.002
B0	2.70±0.05	0.106±0.002
K0	0.59±0.05	0.023±0.002
P0	4.00±0.10	0.157±0.004
P1	4.00±0.10	0.157±0.004
P2	2.00±0.05	0.079±0.002
T	0.20±0.02	0.008±0.001
E	1.75±0.10	0.069±0.004
F	3.50±0.05	0.138±0.002
D0	1.55±0.05	0.061±0.002
D1	0.60±0.10	0.024±0.004
W	8.0±0.10	0.315±0.004
B	2.0±0.5	0.079±0.020
H	4.0±0.5	0.157±0.020
C	13.0±0.5	0.512±0.020
G	8.4±1.5	0.331±0.059
T1	14.9(max)	0.587(max)
N	60	2.362
D	178±2.0	7±0.079

Ratings and V-I characteristic curves (+25 °C unless otherwise noted)

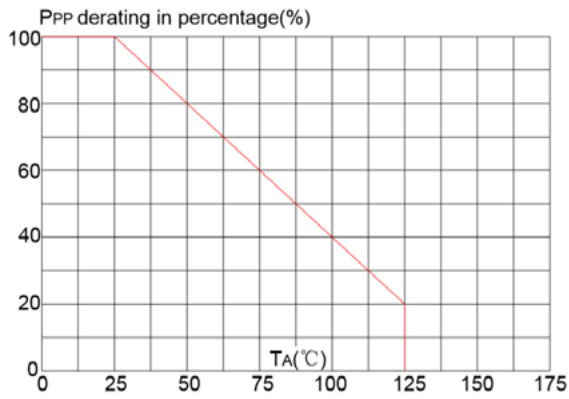
V- I curve characteristics (Uni-directional)



Pulse waveform (8/20 μ s)



Pulse derating curve



ESD waveform

