

DISC THERMOSTATS

Snap Action Disc Thermostats



— Automatic Reset

STO-160

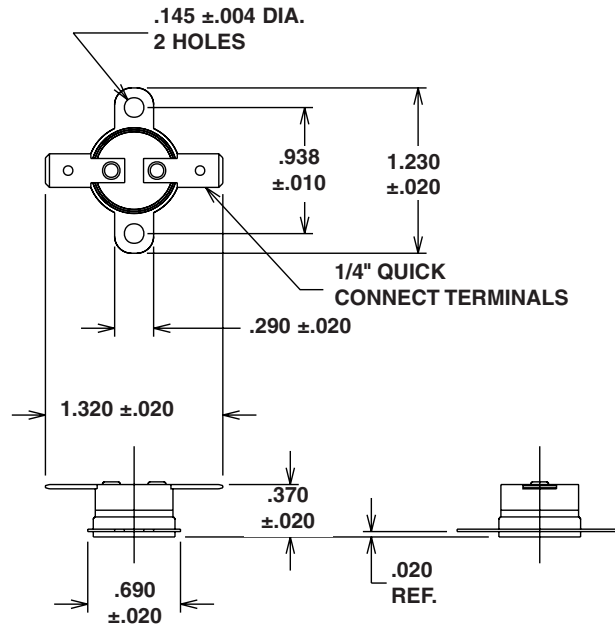
Operating Specifications

| Sec. | STANCOR PART NUMBER | Operating Range ¹ | | Function ² | Differential ³ | |
|------|---------------------|------------------------------|------------|-----------------------|---------------------------|------|
| | | °F | °C | | | |
| A | STO-60 | 55 to 65 | 13 to 18 | Opens | 20°F | 12°C |
| | STO-85 | 80 to 90 | 27 to 32 | Opens | 15°F | 8°C |
| | STC-100 | 93 to 107 | 34 to 42 | Closes | 30°F | 17°C |
| | STO-110 | 105 to 115 | 41 to 46 | Opens | 30°F | 17°C |
| B | STO-120 | 115 to 125 | 46 to 52 | Opens | 30°F | 17°C |
| | STC-120 | 113 to 127 | 45 to 53 | Closes | 30°F | 17°C |
| | STO-140 | 135 to 145 | 57 to 63 | Opens | 30°F | 17°C |
| | STC-140 | 133 to 147 | 56 to 64 | Closes | 30°F | 17°C |
| C | STO-150 | 145 to 155 | 63 to 68 | Opens | 30°F | 17°C |
| | STO-160 | 155 to 165 | 68 to 74 | Opens | 30°F | 17°C |
| | STO-170 | 165 to 175 | 74 to 79 | Opens | 30°F | 17°C |
| | STC-170 | 162 to 178 | 72 to 81 | Closes | 30°F | 17°C |
| | STO-175 | 170 to 180 | 77 to 82 | Opens | 15°F | 8°C |
| D | STO-180 | 175 to 185 | 79 to 85 | Opens | 30°F | 17°C |
| | STC-180 | 172 to 188 | 78 to 87 | Closes | 30°F | 17°C |
| | STO-190 | 185 to 195 | 85 to 91 | Opens | 30°F | 17°C |
| | STO-210 | 204 to 216 | 96 to 102 | Opens | 30°F | 17°C |
| | STO-220 | 214 to 226 | 101 to 108 | Opens | 30°F | 17°C |
| E | STC-225 | 217 to 232 | 103 to 111 | Closes | 30°F | 17°C |
| | STO-230 | 224 to 236 | 107 to 113 | Opens | 30°F | 17°C |
| | STC-240 | 229 to 251 | 109 to 122 | Closes | 100°F | 56°C |
| | STO-250 | 244 to 256 | 118 to 124 | Opens | 30°F | 17°C |
| | STO-325 | 315 to 335 | 157 to 169 | Opens | 50°F | 28°C |

Common Ratings

| Load | 120 VAC | 240 VAC | DIMENSIONS INCHES | | | Weight (oz.) | Agency Certif. |
|------------|--------------------|-------------------|-------------------|--------|------|--------------|----------------|
| | | | L | Case W | H | | |
| Resistive | 15 Amps | 10 Amps | 1.23 | 1.32 | 0.37 | 0.2 | UL |
| Inductive | 3.0 FLA - 12.0 LRA | 1.5 FLA - 6.0 LRA | | | | | CSA |
| Pilot Duty | 125 VA | 125 VA | | | | | VDE |

* Agency Certification Note: UL Recognized (File E19279 and MH-5304)
CSA Certified (File LR19988)
VDE Licensed



1 - Operating Range: Range of temperature at which disc thermostat performs switching function.

2 - Function:

- Opens - Normally closed circuit - opens within specified temperature range.
- Closes - Normally open circuit - closes within specified temperature range.

3 - Differential: Temperature drop below operating range minimum necessary for disc to reset.