

Materials and Finish

Housing: Nylon 6T Thermoplastic
30% Glass Filled, Black
UL 94V-0 Rated

Terminals: Copper Alloy,
100u" Tin over
100u" Nickel plating

Mechanical Characteristics

Insertion Force:
0.3kg - 3.0kg

Extraction Force:
0.2kg - 3.0kg

Durability: 5000 mating cycles

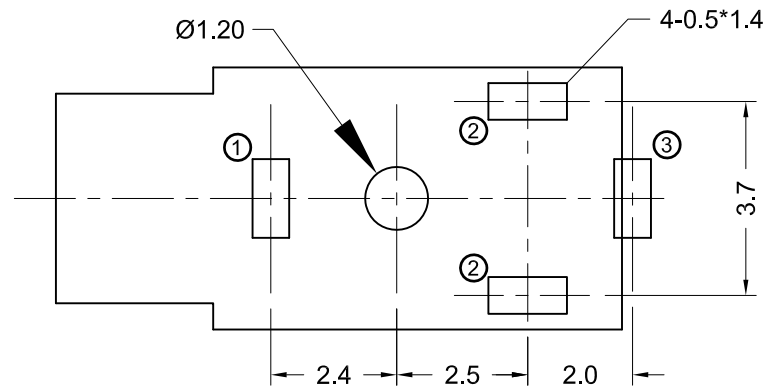
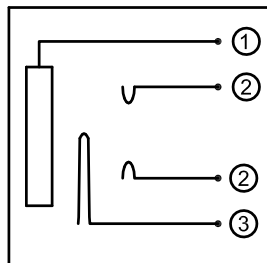
Electrical Characteristics

Contact Resistance:
Before Test: 50mohms Max.
After Durability Test:
100 mohms Max.

Insulation Resistance:
More than 100 Megohms
at 250V DC

Dielectric Strength:
250V AC RMS for 1 minute

Operating Temp:
-25°C to +80°C



Recommended PCB Layout
(Bottom View)

PRELIMINARY
PART IN DESIGN
SPECIFICATION SUBJECT TO CHANGE

RoHS COMPLIANT
EU Directive 2002/95/EC



| Tolerances |
|----------------------------|
| X.X ± 0.25 |
| X.XX ± 0.15 |
| Unless Stated Otherwise |

| REV. | DATE | DESCRIPTION | REV. BY | CHK. BY | DRAWN BY | DATE |
|------|----------|-------------|------------|-------------|------------|----------|
| A1 | 9/22/05 | New Drawing | R. Aguirre | H. MA | R. Aguirre | 07/07/05 |
| A2 | 01/16/13 | ECO #12-063 | S. Vien | P. DalCanto | | |
| | | | | | | |
| | | | | | | |
| | | | | | | |
| | | | | | | |

STX-0402-AS

Stereo Jack, Right Angle, RoHS Compliant

2.5mm, Through Hole

