

# Surface Mount Bandpass Filter

## SXBP-29+

50Ω      24 to 35 MHz

### The Big Deal

- Low insertion loss (0.9dB typical)
- Wide stopband rejection, 40 dB
- Good VSWR, 1.4:1 typical
- Miniature shielded package



CASE STYLE: HF1139

### Product Overview

The SXBP-29+ is a bandpass filter fabricated using SMT technology. The SXBP-29+ offer good matching within the passband and it has more than 40 dB rejection up to 1600 MHz. This unit uses a miniature high Q capacitors and wire welded inductors for high reliability. In addition it has repeatable performance across production lots and consistent performance across temperature.

### Key Features

Feature	Advantages
Wide bandpass filter	This provides low signal distortion for broadband RF/IF application.
More than 40dB rejection up to 1600MHz	This enables the filter to attenuate spurious signals and reject harmonics for a broad band of frequency.
Small size of 0.44" x 0.74" x .27"	The surface mount package enables the SXBP-29+ to be used in compact designs.

#### Notes

- A. Performance and quality attributes and conditions not expressly stated in this specification document are intended to be excluded and do not form a part of this specification document.  
B. Electrical specifications and performance data contained in this specification document are based on Mini-Circuit's applicable established test performance criteria and measurement instructions.  
C. The parts covered by this specification document are subject to Mini-Circuits standard limited warranty and terms and conditions (collectively, "Standard Terms"); Purchasers of this part are entitled to the rights and benefits contained therein. For a full statement of the Standard Terms and the exclusive rights and remedies thereunder, please visit Mini-Circuits' website at [www.minicircuits.com/MCLStore/terms.jsp](http://www.minicircuits.com/MCLStore/terms.jsp)



# Surface Mount Bandpass Filter

## SXBP-29+

50Ω 24 to 35 MHz



CASE STYLE: HF1139

### Features

- Good VSWR, 1.4:1 typical over passband
- High rejection, 40 dB
- Shielded case
- Aqueous washable

### Applications

- Test equipments
- Transmitters / Receivers
- Harmonic Rejection
- Military

### Electrical Specifications at 25°C

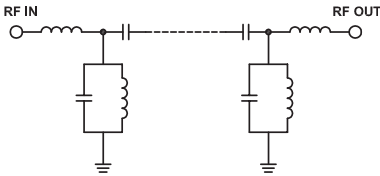
Parameter	F#	Frequency (MHz)	Min.	Typ.	Max.	Unit	
Pass Band	Center Frequency	—	—	29	—	MHz	
	Insertion Loss	F1-F2	24-35	—	0.9	1.5	dB
	VSWR	F1-F2	24-35	—	1.4	1.7	:1
Stop Band, Lower	Insertion Loss	DC-F3	DC-17	20	32	—	dB
	VSWR	DC-F3	DC-17	—	50	—	:1
Stop Band, Upper	Insertion Loss	F4-F5	48-1600	20	30	—	dB
	VSWR	F4-F5	48-1600	—	26	—	:1

### Maximum Ratings

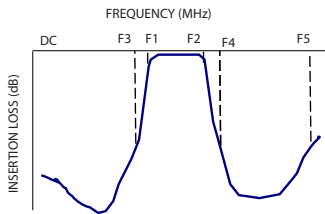
Operating Temperature	-40°C to 85°C
Storage Temperature	-55°C to 100°C
RF Power Input	0.25W max.

Permanent damage may occur if any of these limits are exceeded.

### Functional Schematic



### Typical Frequency Response

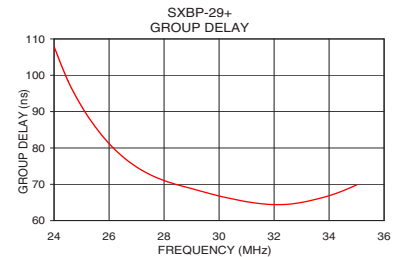
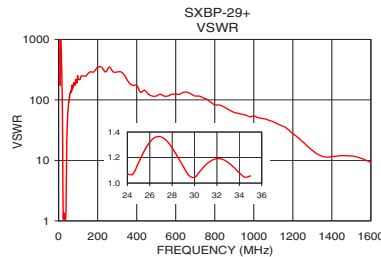
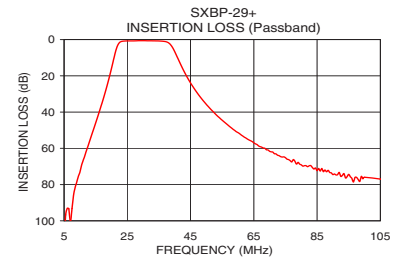
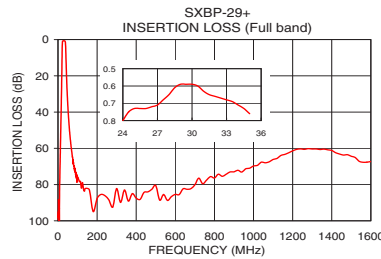


### Typical Performance Data at 25°C

Frequency (MHz)	Insertion Loss (dB)	VSWR (:1)	Frequency (MHz)	Group Delay (nsec)
0.5	96.97	1737.18	24.0	107.88
1.0	98.14	1737.18	25.0	91.46
14.0	51.13	579.06	25.5	85.82
17.0	34.96	217.15	26.0	81.19
21.0	8.57	12.18	26.5	77.58
22.0	2.94	3.20	27.0	74.75
24.0	0.80	1.07	27.5	72.62
27.0	0.71	1.36	28.0	71.04
29.0	0.59	1.13	28.5	69.83
35.0	0.76	1.06	29.0	68.83
39.0	3.54	3.29	29.5	67.78
40.0	6.67	6.71	30.0	66.78
42.0	14.22	19.98	30.5	65.96
48.0	31.54	66.82	31.0	65.21
58.0	48.84	124.09	31.5	64.69
100.0	75.99	217.15	32.0	64.42
300.0	82.17	289.53	33.0	65.02
800.0	76.39	82.73	33.5	65.84
1200.0	61.41	27.59	34.0	66.86
1600.0	67.26	9.23	35.0	69.83

### +RoHS Compliant

The +Suffix identifies RoHS Compliance. See our web site for RoHS Compliance methodologies and qualifications



### Notes

- Performance and quality attributes and conditions not expressly stated in this specification document are intended to be excluded and do not form a part of this specification document.
- Electrical specifications and performance data contained in this specification document are based on Mini-Circuit's applicable established test performance criteria and measurement instructions.
- The parts covered by this specification document are subject to Mini-Circuits standard limited warranty and terms and conditions (collectively, "Standard Terms"); Purchasers of this part are entitled to the rights and benefits contained therein. For a full statement of the Standard Terms and the exclusive rights and remedies thereunder, please visit Mini-Circuits' website at [www.minicircuits.com/WCLStore/terms.jsp](http://www.minicircuits.com/WCLStore/terms.jsp)



[www.minicircuits.com](http://www.minicircuits.com) P.O. Box 350166, Brooklyn, NY 11235-0003 (718) 934-4500 [sales@minicircuits.com](mailto:sales@minicircuits.com)

REV. A  
M130699  
SXBP-29+  
ED10045U  
RAV/UR/JNY  
110327  
Page 2 of 3