

K-No.: 25152
6-15-25A Current-Sensor-Module
Date: 02.10.2007

 For the electronic measurement of currents:
 DC, AC, pulsed, mixed ..., with a galvanic
 Isolation between the primary circuit
 (high power) and the secondary circuit

Customer: Standard Type
Cutomers Part No.:
Page 1 of 3
Description

- Closed loop (compensation)
Current Sensor with magnetic field probe
- Printed circuit board mounting
- Casing and materials UL-listed

Characteristics

- Excellent accuracy
- Very low offset current
- Very low temperature dependency and offset current drift
- Very low hysteresis of offset current
- Short response time
- Wide frequency bandwidth
- Compact design

Applications

Mainly used for stationary operation in industrial applications:

- AC variabel speed drives and servo motor drives
- Static converters for for DC motor drives
- Battery supplied applications
- Switched Mode Power Supplies (SMPS)
- Power Supplies for welding applications
- Uninterruptable Power Supplies (UPS)

Electrical Data – Ratings

I_{PN}	Primary rated current, r.m.s	25	A
R_M	Load resistance	0 ... 200	Ω
I_{SN}	Output rated current, r.m.s	12.5	mA
K_N	Turns ratio	1...3 : 2000	

Accuracy – Dynamic performance data (with DRV401 @ $V_C = 5V \pm 5\%$)

		min.	typ.	max.	Unit
$I_{P,max}$	Max. measuring range @ $R_M = 12,5 \Omega$	± 85			A
$X(T)$	Measuring accuracy @ $I_{PN}, T_A = -40... +85^\circ C$			0.5	%
ϵ_L	Linearity			0.1	%
$I_0(T)$	Offset current @ $I_P=0, T_A = -40... +85^\circ C$		0.02	0.05	mA
I_{0H}	Hysteresis		0.02	0.05	mA
t_r	Response time		0.3		μs
$\Delta t(I_{p,max})$	Delay time at $di/dt = 100 A/\mu s$		0.2		μs
f	Frequency range		DC...100		kHz

General Data

		min.	typ.	max.	Unit
T_A	Ambient temperature	-40		+85	$^\circ C$
T_S	Storage temperature	-40		+90	$^\circ C$
m	Mass		12		g
R_S	Secondary coil resistance @ $T_A=85^\circ C$			67	Ω
R_P	Primary coil resistance per turn @ $T_A=25^\circ C$		1		m Ω
C_k	Coupling capacity		5		pF

Mechanical Stress according to M3209/3

Settings: 10 – 2000 Hz, 1 min/Decade, 2 hours

Constructed and manufactured and tested in accordance with EN 61800-5-1 (Pin 1 - 6 to Pin 7 - 10)

Reinforced insulation, Insulation material group 3a, Pollution degree 2

S_{clear}	clearance (component without solder pad)	7			mm
S_{creep}	creepage (component without solder pad)	7			mm
V_{sys}	System voltage overvoltage category 3	RMS		300	V
V_{work}	Working voltage (table 7 acc. to EN61800-5-1)	RMS		350	V
U_{PD}	Rated discharge voltage	peak value		1040	V

Type Testing according to EN 61800-5-1 (Pin 1 - 6 to Pin 7 - 10)

V_W	HV transient test according to M3064 (1,2 μs / 50 μs -wave form)			6	kV
V_d	Testing voltage to M3014		(5 s)	3	kV
V_e	Partial discharge voltage acc.M3024 (RMS)			1100	V
	with V_{vor} (RMS)			1375	V

Datum	Name	Index	Änderung
		81	

 Hrsg.: KB-E
 editor

 Bearb.: SA
 designer

 KB-E: Le
 check

 KB-PM: KRe.
 check

 freig.: Heu.
 released

K-No.: **25152**

6-15-25A Current-Sensor-Module

For the electronic measurement of currents:
DC, AC, pulsed, mixed ..., with a galvanic
Isolation between the primary circuit
(high power) and the secondary circuit

Date: 02.10.2007

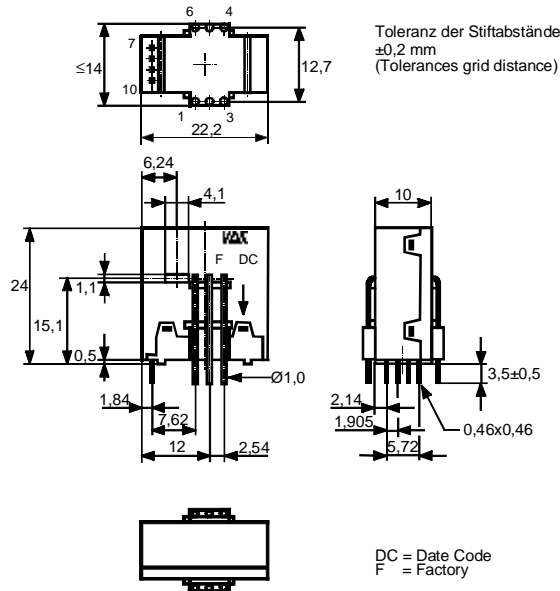
Customer: Standard Type

Customer's Part No.:

Page 2 of 3

Mechanical outline (mm):

General tolerances DIN ISO 2768-c

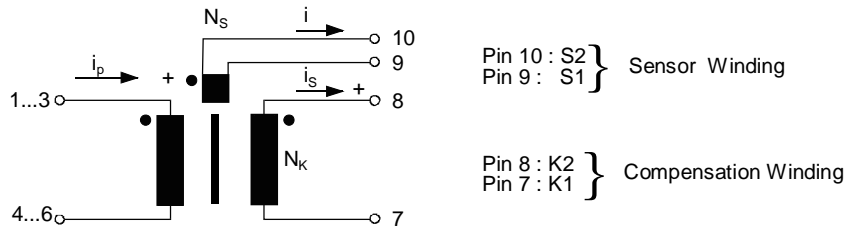


Connections:
1...6: Ø 1 mm
7..10: 0,46*0,46 mm

Marking:

VAC
4645X601
F DC

Schematic diagram



Inspection (Measurements after temperature balance of the samples at room temperature.)

K_N (N1/N2)	(V)	M3011/6c:	Turns ratio ($I_p=3*8A$, 40...80 Hz)	3 : 2000 ± 0,5	%
I_0		M3226:	Offset current	< 0.05	mA
$\Delta\Phi$ (K1-K2)	(V)	M3090:	Magnetic Flux compensation core	4.5...7	nVs
$\Delta\Phi$ (S1-S2)	(V)	M3090:	Magnetic Flux sensor	20...35	nVs
R_S (K1-K2)	(V)	M3011/5:	Winding resistance compensation coil	44...52,5	Ω
R (S1-S2)	(V)	M3011/5:	Winding resistance magnetic probe coil	2.3...3.0	Ω
V_d	(V)	M3014:	Testing voltage, rms, 1s Pin 1 - 6 to Pin 7 - 10	1,5	kV
V_e	(AQL1/S4)	M3024:	Partial discharge voltage (RMS) with V_{vor} (RMS)	>1100 1375	V V

Applicable documents

Current direction: A positive output current appears at point I_s , by primary current in direction of the arrow.
Temperature of the primary conductor should not exceed 110°C
Housing and bobbin material: UL-listed. Flammability class UL 94V-0.
Enclosures according to IEC 60529: IP50.

Additional data available on request.
This specification is no declaration of warranty acc. BGB §443.

Hrsg.: KB-E editor	Bearb: SA designer	KB-E: Le check	KB-PM: KRe. check	freig.: Heu. released
-----------------------	-----------------------	-------------------	----------------------	--------------------------