

K-No.: 25459

100 A Current Sensor

 For the electronic measurement of currents:
 DC, AC, pulsed, mixed ..., with a galvanic
 isolation between the primary circuit
 (high power) and the secondary circuit
 (electronic circuit)

Date: 05.02.2013

Customer: Standard type

Customers Part no.:

Page 1 of 2

Description

- Closed loop (compensation)
Current Sensor with magnetic field probe
- Printed circuit board mounting
- Casing and materials UL-listed

Characteristics

- Excellent accuracy
- Very low offset current
- Very low temperature dependency and offset current drift
- Very low hysteresis of offset current
- Short response time
- Wide frequency bandwidth
- Compact design
- Reduced offset ripple

Applications

Mainly used for stationary operation in industrial applications:

- AC variable speed drives and servo motor drives
- Static converters for DC motor drives
- Battery supplied applications
- Switched Mode Power Supplies (SMPS)
- Power Supplies for welding applications
- Uninterruptible Power Supplies (UPS)

Electrical data – Ratings

I_{PN}	Primary nominal r.m.s. current	100	A
R_M	Measuring resistance $V_C = \pm 12V$	10 ... 200	Ω
	$V_C = \pm 15V$	40 ... 400	Ω
I_{SN}	Secondary nominal r.m.s. current	100	mA
K_N	Turns ratio	1: 1000	

Accuracy – Dynamic performance data

		min.	typ.	max.	Unit
$I_{P,max}$	Max. measuring range				
	@ $V_C = \pm 12V, R_M = 10 \Omega (t_{max} = 10sec)$	± 230			A
	@ $V_C = \pm 15V, R_M = 40 \Omega (t_{max} = 10sec)$	± 180			A
X	Accuracy @ $I_{PN}, T_A = 25^\circ C$		0.1	0.5	%
ϵ_L	Linearity			0.1	%
I_0	Offset current @ $I_P = 0, T_A = 25^\circ C$		0.04	0.1	mA
t_r	Response time		1		μs
$\Delta t (I_{P,max})$	Delay time at $di/dt = 100 A/\mu s$		200		ns
f	Frequency bandwidth	DC...200			kHz

General data

		min.	typ.	max.	Unit
T_A	Ambient operating temperature	-40		+85	$^\circ C$
T_S	Ambient storage temperature	-40		+90	$^\circ C$
m	Mass		14		g
V_C	Supply voltage	± 11.4	± 12 or ± 15	± 15.75	V
I_C	Current consumption		18		mA
	Constructed and manufactured and tested in accordance with EN 61800-5-1 (primary vs. secondary) Reinforced insulation, Insulation material group 1, Pollution degree 2				
S_{clear}	Clearance (component without solder pad)	12			mm
S_{creep}	Creepage (component without solder pad)	12			mm
V_{sys}	System voltage			600	V
V_{work}	Working voltage				V
	(table 7 acc. to EN61800-5-1)				
	over voltage category 2			1000	V
U_{PD}	Rated discharge voltage		peak value	1225	V

Maximal continuous and peak currents at defined temperatures

 Supply voltage $\pm 12V$:

 Supply voltage $\pm 15V$:

T_A	85 $^\circ C$	85 $^\circ C$	70 $^\circ C$	55 $^\circ C$
I_P	60 A	100 A	80 A	100 A
$I_{P,max}$	235 A	149 A	241 A	246 A
R_M	10 Ω	36 Ω	10 Ω	10 Ω

T_A	85 $^\circ C$	85 $^\circ C$	70 $^\circ C$	55 $^\circ C$
I_P	50 A	100 A	100 A	100 A
$I_{P,max}$	182 A	129 A	161 A	186 A
R_M	40 Ω	70 Ω	50 Ω	40 Ω

Date	Name	Issue	Amendment
05.02.13	Le	81	Mechanical outline changed (the reference line at the standoff is just a bit down-eccentric). Lapidary change

Hrsg.: KB-E editor	Bearb.: Le designer			KB-PM KRe. check		freig.: HS released
-----------------------	------------------------	--	--	---------------------	--	------------------------

K-No.: 25459

100 A Current Sensor

For the electronic measurement of currents:
DC, AC, pulsed, mixed ..., with a galvanic
isolation between the primary circuit
(high power) and the secondary circuit
(electronic circuit)

Date: 05.02.2013

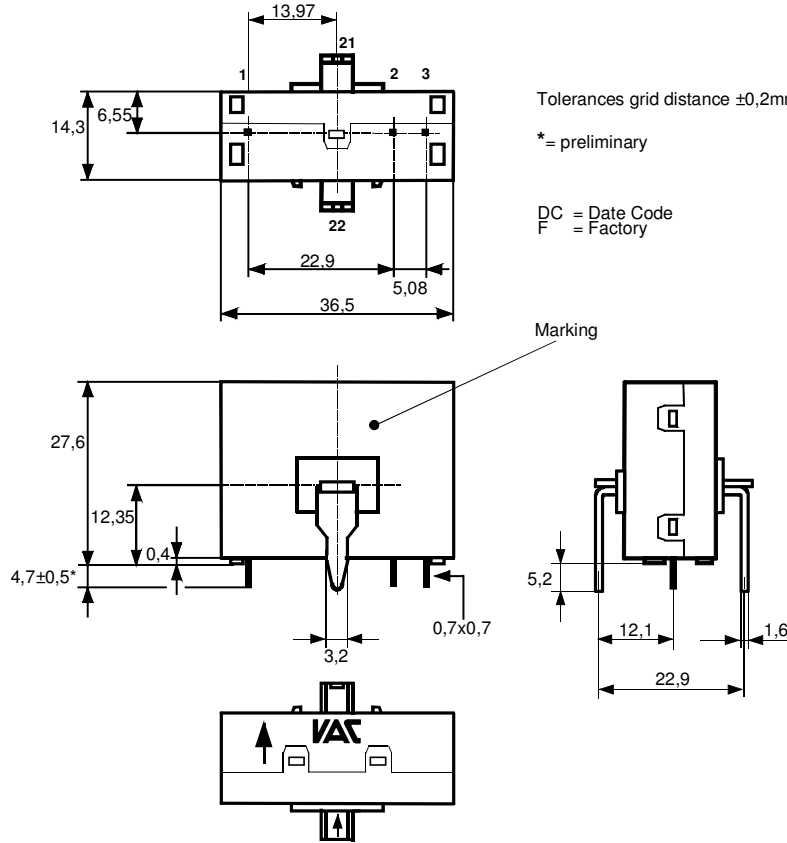
Customer: Standard type

Customers Part no.:

Page 2 of 2

Mechanical outline (mm):

General tolerances DIN ISO 2768-c



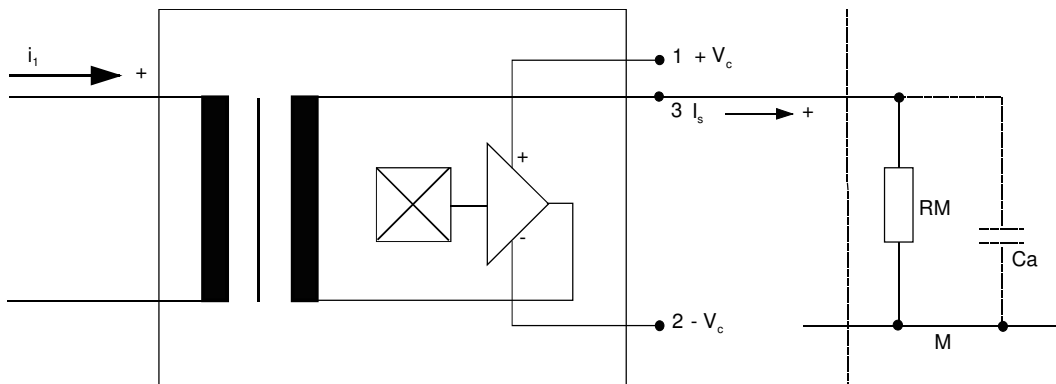
Connections:

1...3: 0,7 x 0,7 mm

Marking:

4646X112
F DC

Schematic diagram



Temperature of the primary conductor should not exceed 100 °C
Additional indications are obtainable on request.
This specification is no declaration of warranty acc. BGB §443 dar.

Hrsg.: KB-E
editor

Bearb: Le
designer

KB-PM KRe.
check

freig.: HS
released

K-No.: 25459

100 A Current Sensor

For electronic current measurement:
DC, AC, pulsed, mixed ..., with a galvanic
isolation between primary circuit
(high power) and secondary circuit

Date: 05.02.2013

Customer:

Customers Part No.:

Page 1 of 3

Electrical Data (investigate by a type checking)

		min.	typ.	max.	Unit
V_{Ctot}	Maximum supply voltage (without function) ± 15.75 to ± 18 V: for 1s per hour			± 18	V
R_S	Secondary coil resistance @ $T_A=85^\circ\text{C}$			38.5	Ω
R_P	Primary resistance @ $T_A=25^\circ\text{C}$		0,1		m Ω
X_{Ti}	Temperature drift of X @ $T_A = -40 \dots +85^\circ\text{C}$			0.1	%
I_{0ges}	Offset current (including I_0, I_{0t}, I_{0T})			0.14	mA
I_{0t}	Long term drift Offset current I_0		0.05		mA
I_{0T}	Offset current temperature drift I_0 @ $T_A = -40 \dots +85^\circ\text{C}$		0.05		mA
I_{0H}	Hysteresis current @ $I_P=0$ (caused by primary current $10 \times I_{PN}$)		0.05	0.1	mA
$\Delta I_0/\Delta V_C$	Supply voltage rejection ratio			0.01	mA/V
i_{loss}	Offset ripple (with 1 MHz- filter first order)			0.2	mA
i_{loss}	Offset ripple (with 100 kHz- filter first order)		0.04	0.075	mA
i_{loss}	Offset ripple (with 20 kHz- filter first order)		0.015	0.025	mA
C_k	Maximum possible coupling capacity (primary – secondary)		6		pF

Inspection (Measurement after temperature balance of the samples at room temperature)

$K_N(N_1/N_2)$	(V)	M3011/6	Transformation ratio ($I_P=100\text{A}$, 40-80 Hz)	$1 : 1000 \pm 0,5 \%$	
I_0	(V)	M3226	Offset current	< 0.1	mA
V_d	(V)	M3014:	Test voltage, rms, 1 s pin 1 – 3 vs. hole	1.8	kV
V_e	(AQL 1/S4)		Partial discharge voltage acc.M3024 (RMS) with V_{vor} (RMS)	1300 1625	V V

Type Testing (Pin 1 - 3 to hole)

V_W			HV transient test according to M3064 (1,2 μs / 50 μs -wave form)	8	kV
V_d			Testing voltage to M3014	(5 s)	3,6 kV
V_e			Partial discharge voltage acc.M3024 (RMS) with V_{vor} (RMS)	1300 1625	V V

Datum	Name	Index	Änderung			
05.02.13	Le	81	Date updated.			
Hrsg.: KB-E editor			Bearb: Le designer		KB-PM IA: KRe. check	freig.: HS released

K-No.: 25459

100 A Current Sensor

For electronic current measurement:
DC, AC, pulsed, mixed ..., with a galvanic
isolation between primary circuit
(high power) and secondary circuit

Date: 05.02.2013

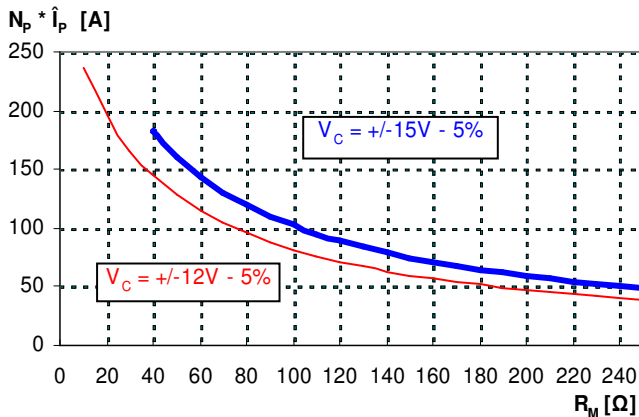
Customer:

Customers Part No.:

Page 2 of 3

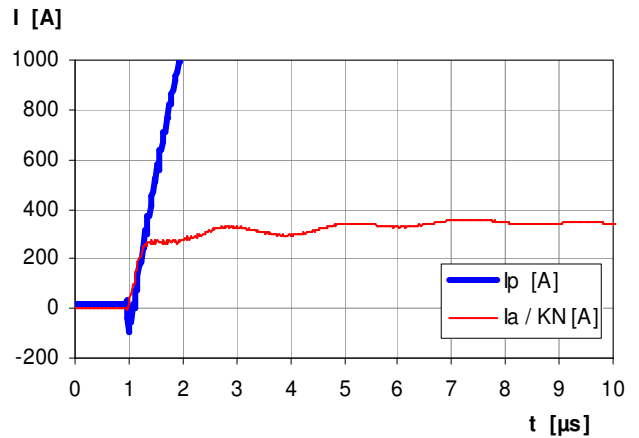
Limit curve of measurable current $\hat{I}_P(R_M)$

@ ambient temperature $\leq 85^\circ\text{C}$



Maximum measuring range (μs -range)

Output current behaviour of a 3kA current pulse
@ $V_C = \pm 15\text{V}$ und $R_M = 100\Omega$



Fast increasing currents (higher than the specified $I_{p,max}$), e.g. in case of a short circuit, can be transmitted because the currents are transformed directly and be limited by diodes only.

The offset ripple can be reduced by an external low pass. Simplest solution is a passive low pass filter of 1st order with

$$f_g = \frac{1}{2\pi \cdot R_M \cdot C_a}$$

In this case the response time is enlarged.

It is calculated from:

$$t'_r \leq t_r + 2,5R_M C_a$$

Applicable documents

Current direction: A positive output current appears at point I_S , by primary current in direction of the arrow.

Housing and bobbin material UL-listed: Flammability class 94V-0.

Hrsg.: KB-E
editor

Bearb: Le
designer

KB-PM IA: KRe.
check

freig.: HS
released