

K-no.: 24507

25 A Current Sensor modul for 5V-supply voltage
Date: 10.12.2010

 For electronic current measurement:
 DC, AC, pulsed, mixed ..., with a galvanic
 isolation between primary circuit
 (high power) and secondary circuit
 (electronic circuit)

Customer: Standard type

Customers Part no.:

Page 1 of 2

Description

- Closed loop (compensation)
Current Sensor with magnetic field probe
- Printed circuit board mounting
- Casing and materials UL-listed

Characteristics

- Excellent accuracy
- Very low offset current
- Very low temperature dependency and offset current drift
- Very low hysteresis of offset current
- short response time
- Wide frequency bandwidth
- Compact design
- Reduced offset ripple

Applications

Mainly used for stationary operation in industrial applications:

- AC variable speed drives and servo motor drives
- Static converters for DC motor drives
- Battery supplied applications
- Switched Mode Power Supplies (SMPS)
- Power Supplies for welding applications
- Uninterruptible Power Supplies (UPS)

Electrical data – Ratings

I_{PN}	Primary nominal r.m.s. current	25	A
V_{out}	Output voltage @ I_P	$2.5 \pm (0.625 \cdot I_P / I_{PN})$	V
V_{out}	Output voltage @ $I_P=0, T_A=25^\circ C$	2.5 ± 0.015	V
V_{Ref}	Reference voltage	2.5 ± 0.005	V
K_N	Turns ratio	1...3 : 2000	

Accuracy – Dynamic performance data

		min.	typ.	max.	Unit
$I_{P,max}$	Max. measuring range	±85			
X	Accuracy @ $I_{PN}, T_A=25^\circ C$			0.7	%
ϵ_L	Linearity			0.1	%
$V_{out} -2,5V$	Offset voltage @ $I_P=0, T_A=25^\circ C$			±15	mV
$\Delta V_{out} / 2,5V / \Delta T$	Temperature drift of V_{out} @ $I_P=0, T_A=-40...85^\circ C$		13	26	ppm/K
t_r	Response time @ 90% von I_{PN}		300		ns
$\Delta t (I_{P,max})$	Delay time at $di/dt = 100 A/\mu s$		200		ns
f	Frequency bandwidth	DC...100			kHz

General data

		min.	typ.	max.	Unit
T_A	Ambient operating temperature	-40		+85	°C
T_S	Ambient storage temperature	-40		+85	°C
m	Mass		12		g
V_C	Supply voltage	4.75	5	5.25	V
I_{CO}	Current consumption		15		mA

 Constructed and manufactured and tested in accordance with EN 61800-5-1 (Pin 1 - 6 to Pin 7 - 9)
 Reinforced insulation, Insulation material group 1, Pollution degree 2

S_{clear}	Clearance (component without solder pad)	7			mm
S_{creep}	Creepage (component without solder pad)	7			mm
V_{sys}	System voltage	overvoltage category 3	RMS	300	V
V_{work}	Working voltage	(tabel 7 acc. to EN61800-5-1) overvoltage category 2	RMS	650	V
U_{PD}	Rated discharge voltage	peak value		1320	V

Date	Name	Issue	Amendment
10.12.10	Ga.	82	Mechanical outline: Pin length, tolerance changed from 3,5 +/-0,5mm auf 3,5 -0,3 / +0,5mm. ÄA-959
08.04.08	Le	82	"Preliminary" delete.

Hrsg.: KB-E editor	Bearb.: Le designer		KB-PM: KRe check		freig.: HS released
-----------------------	------------------------	--	---------------------	--	------------------------

K-no.: 24507

25 A Current Sensor modul for 5V-supply voltage

Date: 10.12.2010

For electronic current measurement:
DC, AC, pulsed, mixed ..., with a galvanic
isolation between primary circuit
(high power) and secondary circuit
(electronic circuit)

Customer: Standard type

Customers Part no.:

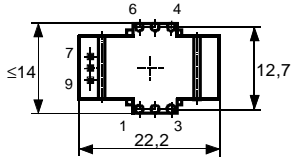
Page 2 of 2

Mechanical outline (mm):

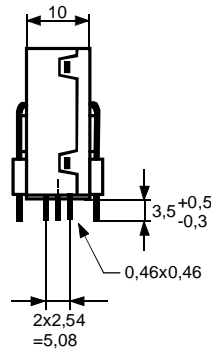
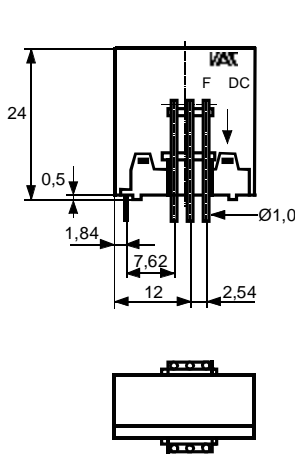
General tolerances DIN ISO 2768-c

Connections:

1...6: \varnothing 1 mm
7...9: 0,46*0,46 mm



Toleranz der Stiftabstände
 $\pm 0,2$ mm
(Tolerances grid distance)

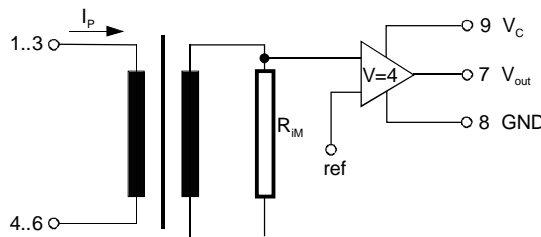


Marking:

VAC
4646X651
F DC

DC = Date Code
F = Factory

Schematic diagram



Possibilities of wiring

(@ $T_A = 85^\circ\text{C}$)

primary windings	primary current RMS	primary current maximal	output voltage effective	turns ratio	primary resistance	wiring
N_P	I_P [A]	$\hat{I}_{P,max}$ [A]	$V_{out}(I_{PN})$ [V]	K_N	R_P [mW]	
1	25	± 85	2.5 ± 0.625	1:2000	0.33	
2	12	± 42	2.5 ± 0.600	2:2000	1.5	
3	8	± 28	2.5 ± 0.600	3:2000	3	

Additional information is obtainable on request.

Temperature of the primary conductor should not exceed 110°C .

This specification is no declaration of warranty acc. BGB §443 dar.

Hrsg.: KB-E
editor

Bearb.: Le
designer

KB-PM: KRe
check

freig.: HS
released

K-No.: 24507

25 A Current Sensor Modul for 5V-supply voltage

Date: 10.12.2010

 For the electronic measurement of currents:
 DC, AC, pulsed, mixed ..., with a galvanic
 Isolation between the primary circuit
 (high power) and the secondary circuit

Customer:

Customers Part No.:

Page 1 of 2

Electrical Data

		min.	typ.	max.	Unit
V_{Ctot}	Maximum supply voltage (without function)			6	V
I_C	Supply Current with primary current		$15mA + I_p \cdot K_N + V_{out}/R_L$		mA
$I_{out,SC}$	Short circuit output current		± 20		mA
R_P	Resistance / primary winding @ $T_A=25^\circ C$		1		m Ω
R_S	Secondary coil resistance @ $T_A=85^\circ C$			67	Ω
$R_i(V_{out})$	Output resistance of V_{out}			1	Ω
R_L	External recommended resistance of V_{out}	1			k Ω
C_L	External recommended capacitance of V_{out}			500	pF
$\Delta X_T/\Delta T$	Temperature drift of X @ $T_A = -40 \dots +85^\circ C$			40	ppm/K
$\Delta V_0 = \Delta(V_{out} - 2.5V)$	Sum of any offset drift including:		5	10	mV
V_{0t}	Long term drift of V_0		1		mV
V_{0T}	Temperature drift von V_0 @ $T_A = -40 \dots +85^\circ C$		4		mV
V_{0H}	Hysteresis of V_{out} @ $I_P=0$ (after an overload of $10 \times I_{PN}$)		2		mV
$\Delta V_0/\Delta V_C$	Supply voltage rejection ratio			1	mV/V
V_{oss}	Offsetripple (with 1 MHz- filter first order)			60	mV
V_{oss}	Offsetripple (with 100 kHz- filter first order)		5	8	mV
V_{oss}	Offsetripple (with 20 kHz- filter first order)		1	2	mV
C_k	Maximum possible coupling capacity (primary – secondary)		5	10	pF
	Mechanical stress according to M3209/3 Settings: 10 – 2000 Hz, 1 min/Decade, 2 hours			30g	

Inspection (Measurement after temperature balance of the samples at room temperature)

$V_{out}(I_P=I_{PN})$	(V) M3011/6:	Output voltage vs. internal reference ($I_P=25A$, 40-80Hz)		$625 \pm 0.7\%$	mV
$V_{out}-2.5V(I_P=0)$	(V) M3226:	Offset voltage		± 0.015	V
V_d	(V) M3014:	Test voltage, rms, 1 s pin 1 – 6 vs. pin 7 – 9		1,5	kV
V_e	(AQL 1/S4)	Partial discharge voltage acc.M3024 (RMS) with V_{vor} (RMS)		1400 1750	V V

Type Testing (Pin 1 - 6 to Pin 7 - 9)

Designed according standard EN 50178 with insulation material group 1

V_W	HV transient test according to M3064 (1,2 μs / 50 μs -wave form)		8		kV
V_d	Testing voltage to M3014	(5 s)	3		kV
V_e	Partial discharge voltage acc.M3024 (RMS) with V_{vor} (RMS)		1400 1750		V V

Applicable documents

 Current direction: A positive output current appears at point I_s , by primary current in direction of the arrow.
 Housing and bobbin material UL-listed: Flammability class 94V-0.
 Enclosures according to IEC529: IP50.

Datum	Name	Index	Änderung
10.12.10	Ga.	82	Date changed.
08.04.08	Le	82	"preliminary" delete.

Hrsg.: KB-E editor	Bearb.: Le designer	KB-PM: KRe check	freig.: HS released
-----------------------	------------------------	---------------------	------------------------