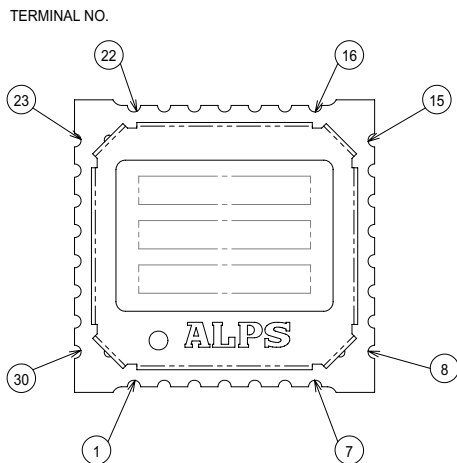
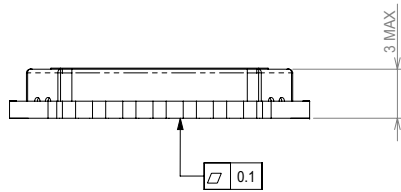
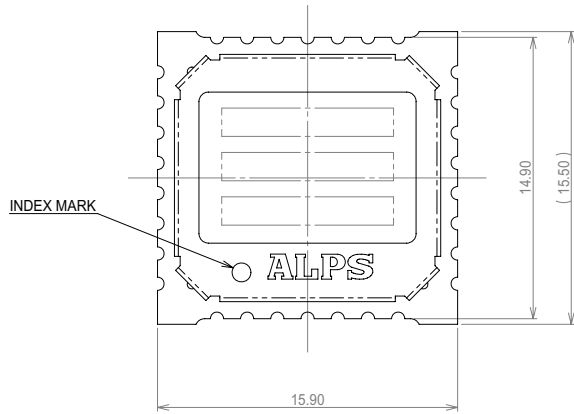


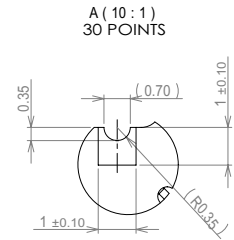
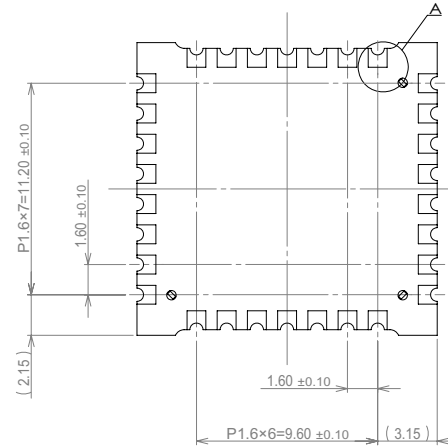
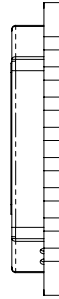
ALPS CONFIDENTIAL

PRELIMINARY

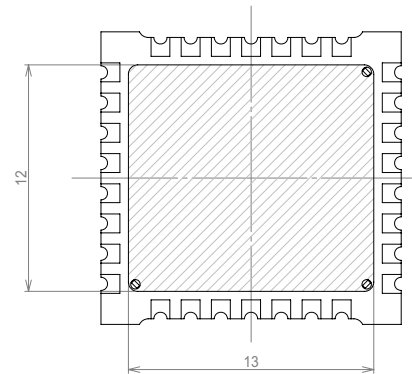


TERMINALS

- | | |
|--------------|------------|
| 1.GND | 16.GND |
| 2.AGC | 17.RST |
| 3.GND | 18.SEN |
| 4.FM_ANT | 19.SCLK |
| 5.GND | 20.SDIOI |
| 6.AM_ANT | 21.RCLK |
| 7.GND | 22.GND |
| 8.GND | 23.GND |
| 9.V-LNA_IN | 24.VDD |
| 10.GND | 25.VDD_GND |
| 11.LW-MW_SW | 26.R_OUT |
| 12.SW_PORT | 27.L_OUT |
| 13.V-LNA_OUT | 28.GND |
| 14.RF_VDD | 29.VIO |
| 15.GND | 30.GND |



INHIBITED AREA (HATCHING AREA) FOR PATTERN LAND



NOTES

- 1.TOLERANCES ARE ±0.5mm, UNLESS OTHERWISE SPECIFIED.
- 2.LOT NO. IS SPECIFIED BY ALPS STANDARD SPECIFICATION.

	TDGL2
CUST. MODEL NO.	ALPS MODEL NO.

PART NO.	NAME	MATERIAL	SPEC.	FINISH
		ALPS ELECTRIC CO., LTD.		
		DSGD. May.12,'11 Y.Sugimori	SCALE 5:1	TITLE TDGL2 ASSEMBLY DRAWING
		CHKD.	UNIT mm	
		APPD. <i>T. Sugimori</i>		
ZONE	SYMB.	DATE OR NO.	APPD.	CHKD.
6				