

T1/E1 Isolation Modules

SMD Dual Channel T1/E1 Transformer

HALO
ELECTRONICS, INC.



Product Features:

- T1/E1/CEPT/ISDN-PR
- UL/EN60950 Recognized
- DEMKO Recognized
- 100% Electrical Testing
- 1500Vrms Hi-Pot
- Patented Open Frame Construction

Part Number	Circuit	Temp. Range	Turns Ratio ($\pm 2\%$) PRI : SEC		Package Height (max)	PRI OCL (typ)	Primary Pins
TG08-1205N1LF	A	0 to 70°C	1CT:2CT	1CT:2CT	0.2" (5.08)	1.2mH	1-3 & 6-8
TG24-1205N1LF	A	0 to 70°C	1CT:1.36CT	1CT:1.36CT	0.2" (5.08)	1.2mH	16-14 & 6-8
TG26-1205N1LF	A	0 to 70°C	1CT:2CT	1CT:2CT	0.2" (5.08)	1.2mH	16-14 & 6-8
TG27-1205N1LF	A	0 to 70°C	1CT:2CT	1CT:1.36CT	0.2" (5.08)	1.2mH	16-14 & 6-8
TG38-1205N1LF	A	0 to 70°C	1CT:1.15CT	1CT:1.15CT	0.2" (5.08)	1.2mH	1-3 & 6-8
TG42-1205N1LF	A	0 to 70°C	1CT:1.41CT	1CT:1.41CT	0.2" (5.08)	1.2mH	16-14 & 6-8
TG48-1205N1LF	B	0 to 70°C	1CT:2CT	1:1	0.2" (5.08)	1.2mH	1-3 & 6-8
TG63-1205N1LF	C	0 to 70°C	1:1.15CT	1CT:2CT	0.2" (5.08)	1.2mH	16-14 & 6-8
TG64-1205N1LF	C	0 to 70°C	1:1:1.26	1CT:2CT	0.2" (5.08)	1.2mH	16-14 & 6-8
TG73-1205N5LF	A	0 to 70°C	1CT:2.3CT	1CT:1CT	0.250" (6.35)	1.2mH	16-14 & 6-8
TG74-1205N1LF	A	0 to 70°C	1CT:1CT	1CT:2CT	0.2" (5.08)	1.2mH	16-14 & 6-8
TG80-1205N5LF	A	0 to 70°C	1CT:2.45CT	1CT:2.45CT	0.250" (6.35)	1.2mH	16-14 & 6-8
TG08-1505N5LF	A	-40 to +85°C	1CT:2CT	1CT:2CT	0.250" (6.35)	1.5mH	1-3 & 6-8
TG23-1505N5LF	D	-40 to +85°C	1:2.42CT	1:2.42CT	0.250" (6.35)	1.5mH	1-3 & 6-8
TG24-1505N5LF	A	-40 to +85°C	1CT:1.36CT	1CT:1.36CT	0.250" (6.35)	1.5mH	16-14 & 6-8
TG26-1505N5LF	A	-40 to +85°C	1CT:2CT	1CT:2CT	0.250" (6.35)	1.5mH	16-14 & 6-8
TG27-1505N5LF	A	-40 to +85°C	1CT:2CT	1CT:1.36CT	0.250" (6.35)	1.5mH	16-14 & 6-8
TG38-1505N5LF	A	-40 to +85°C	1CT:1.15CT	1CT:1.15CT	0.250" (6.35)	1.5mH	1-3 & 6-8
TG42-1505N5LF	A	-40 to +85°C	1CT:1.41CT	1CT:1.41CT	0.250" (6.35)	1.5mH	16-14 & 6-8
TG48-1505N5LF	B	-40 to +85°C	1CT:2CT	1:1	0.250" (6.35)	1.5mH	1-3 & 6-8
TG63-1505N5LF	C	-40 to +85°C	1:1.15CT	1CT:2CT	0.250" (6.35)	1.5mH	16-14 & 6-8
TG64-1505N5LF	C	-45 to +85°C	1:1:1.26	1CT:2CT	0.250" (6.35)	1.5mH	16-14 & 6-8
TG73-1505N5LF	A	-40 to +85°C	1CT:2.3CT	1CT:1CT	0.250" (6.35)	1.5mH	16-14 & 6-8
TG74-1505N5LF	A	-40 to +85°C	1CT:1CT	1CT:2CT	0.250" (6.35)	1.5mH	1-3 & 6-8
TG80-1505N5LF	A	-40 to +85°C	1CT:2.45CT	1CT:2.45CT	0.250" (6.35)	1.5mH	16-14 & 6-8
TG91-1505N5LF	A	-40 to +85°C	1CT:2.4CT	1CT:1CT	0.250" (6.35)	1.5mH	1-3 & 6-8

For additional information contact your [local representative](#), or HALO's support staff at (650) 903-3800 or info@haloelectronics.com

HALO Dual Channel T1/E1 Transformer

Circuit A



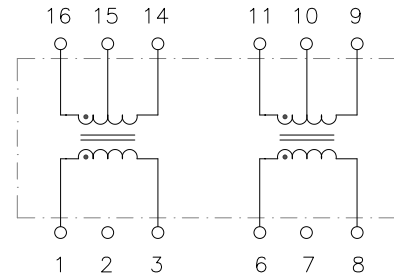
Circuit B



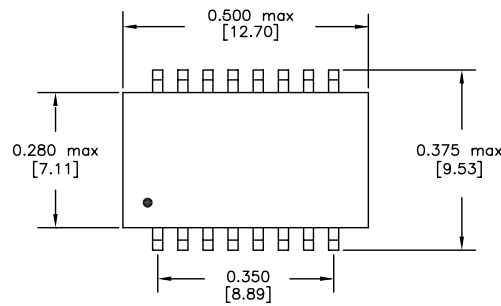
Circuit C



Circuit D

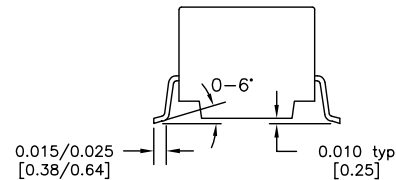


Mechanical



Recommended Solder Pad Layout

Dimensions: inch [mm]
Co-Planarity: 0.004 [0.10]



Patented Construction

US Patent Numbers:

5,656,985 6,297,721 B1

6,297,720 B1 6,320,489 B1

6,344,785 B1 6,662,431 B1

HALO
ELECTRONICS, INC.

2880 Lakeside Drive #116

Santa Clara, CA 95054

(650) 903-3800

www.haloelectronics.com

HALO® Electronics is a leading supplier of high quality communication magnetics including signal transformers, filters, CMR chokes, PoE power transformers, DC/DC converters, and integrated Ethernet connectors. HALO's leading edge technology solutions are manufactured in ISO9001 and ISO14001 factories offering high quality products at a competitive price.

© Copyright 2016 HALO Electronics, Inc. All rights reserved.

Revised 2/2015REVA. Download the latest version at www.haloelectronics.com/pdf/discrete-smddual-t1e1.pdf