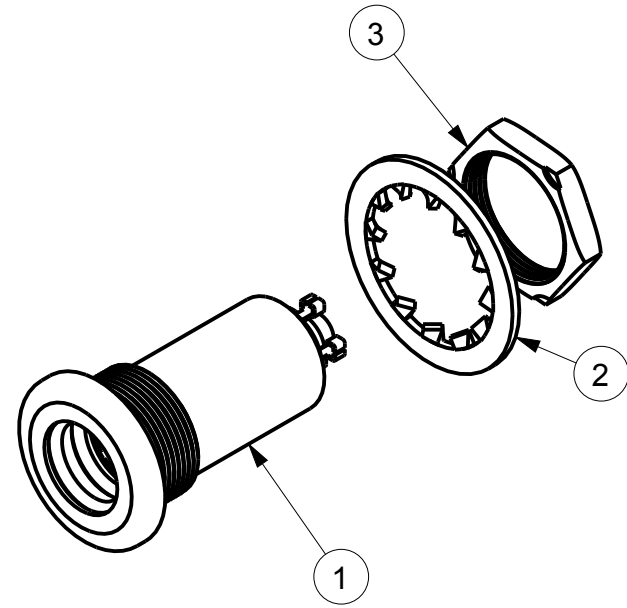
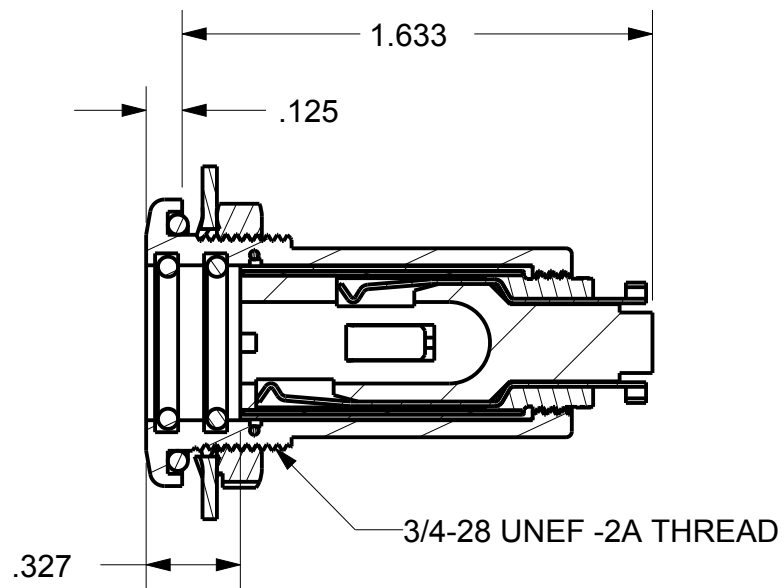
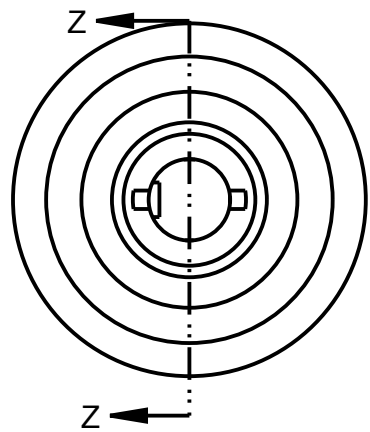


ITEM #	PART #	QTY	DESCRIPTION
1	TJ-101NS-02	1	4 CONDUCTOR JACK
2	AJ-107PM-2	1	LOCK WASHER
3	AJ-107PM-3	1	NUT

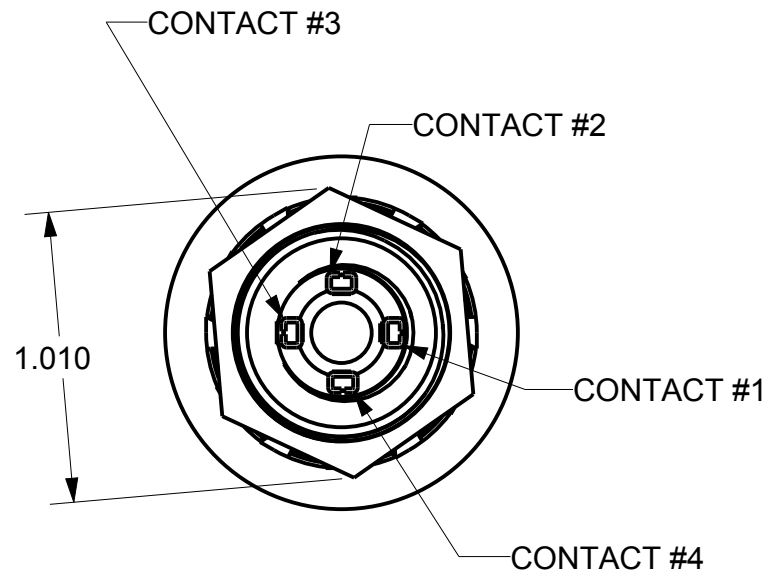
B TJ-101NS2



NOTES:
1) RECOMMENDED PANEL HOLE CUTOUT IS $\phi .765 \pm .005$



SECTION Z-Z



THIS DOCUMENT CONTAINS PROPRIETARY INFORMATION OF NEXUS, INCORPORATED AND SUCH INFORMATION MAY NOT BE DISCLOSED TO OTHERS FOR ANY PURPOSE OR USED FOR ANY PURPOSE WITHOUT THE WRITTEN CONSENT OF NEXUS.

LET.	REVISION	CN #	DATE	CHK.
A	NEW RELEASE		10/4 2012	HR

DWN.BY	HR	DATE	10/4/12	MATERIAL	
CHECKED BY		DATE		FINISH	
APPR.BY		DATE		WEIGHT	SCALE = 1.00 :1
UNLESS OTHERWISE SPECIFIED: DIMENSIONS ARE IN INCHES &/OR (mm)				TITLE TELEPHONE JACK 4 COND SEALED	
TOLERANCES: DECIMAL: .XX[X.X] .XXX[X.XX] ± .01[0.3] ± .003[0.08]					
FRACTION: X/X ± 1/64				DO NOT SCALE DWG. SHEET 1 OF 1	
				NEXUS STAMFORD, CONN	
				SIZE	DWG. NO.
				B	TJ-101NS2