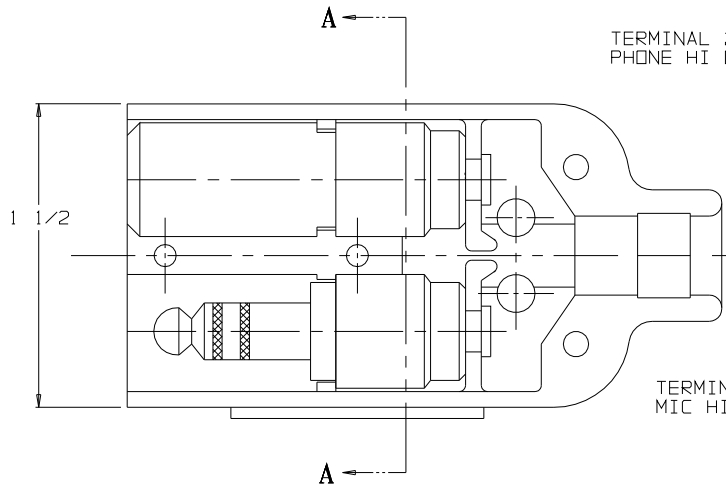
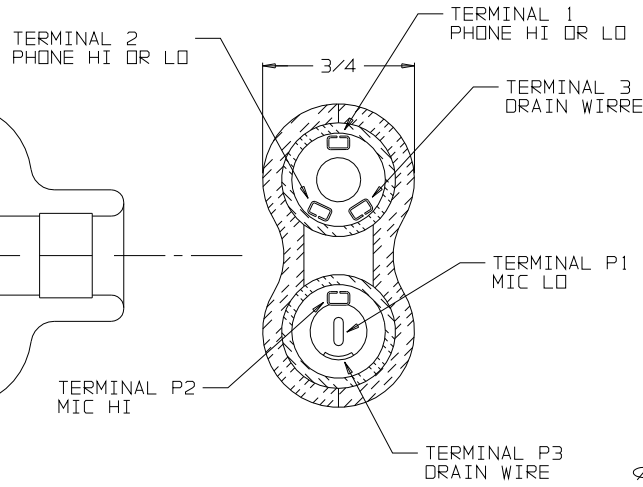


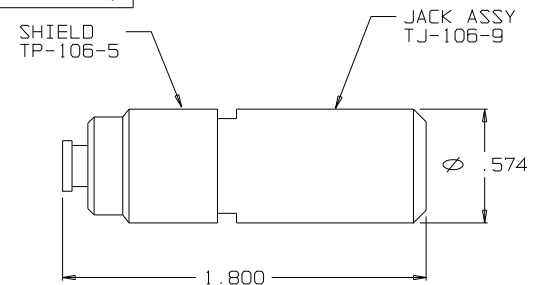
C TJ-106HC



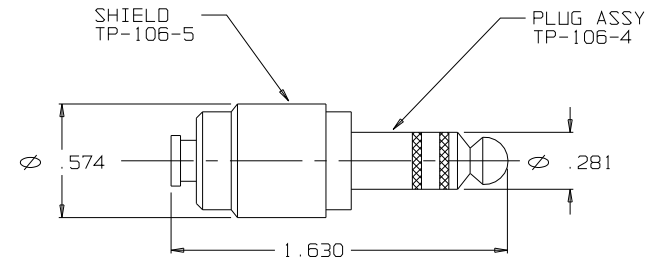
VIEW WITH HALF SHELL REMOVED



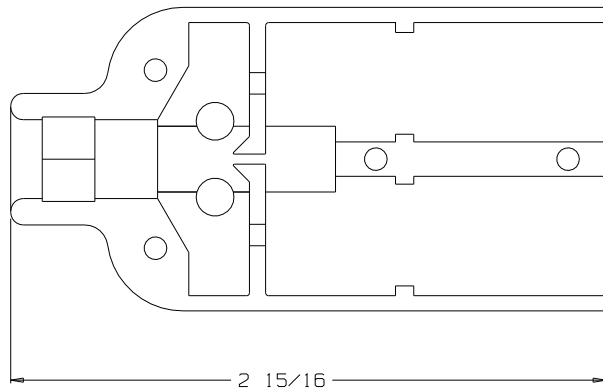
SECTION A-A



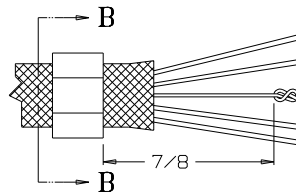
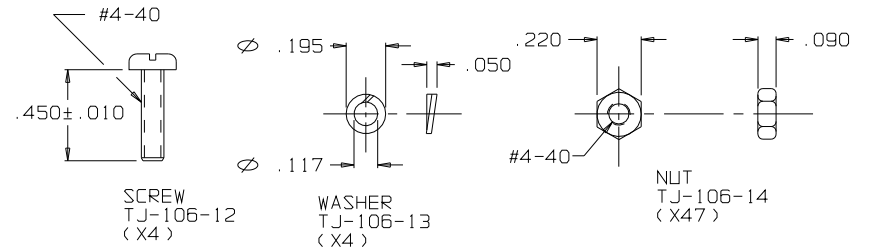
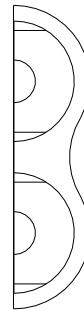
TJ-106-21 JACK & SHIELD ASSEMBLY



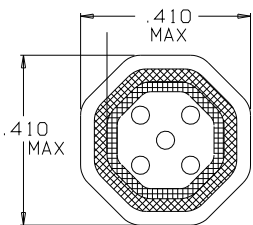
TP-106-10 PLUG & SHIELD ASSEMBLY



SHELL, HALF
TJ-106-11HC
(X2)



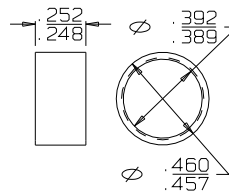
STAY CORD-VARNISH KNOT



SECTION B-B

STRAIN RELIEF
CLAMP TJSS-106-12
AFTER CRIMPING
USE DANIELS HX4 CRIMP
TOOL AND Y146 DIE SET
SCALE 4:1

RING, STRAIN RELIEF
TJSS-106-12



OWN. BY EWT	DATE 8/3/01	MATERIAL _____														
CHECKED BY	DATE	FINISH _____														
APPR. BY	DATE	WEIGHT _____ SCALE 2:1														
UNLESS OTHERWISE SPECIFIED DIMENSIONS ARE IN INCHES TOLERANCES ON FRACTIONS DECIMALS ANGLES ± 1/64 ± .005		TITLE JACK-TELEPHONE-BIAXIAL SHIELDED (6) CONDUCTOR HEX CRIMP														
LET. REVISION	CN # DATE CHK.	DO NOT SCALE DWG. SHEET 1 OF 1														
<table border="1"> <tr> <td>B</td> <td>ADD DANIELS HX4 CRIMP TOOL AND Y146 DIE SET.</td> <td>026</td> <td>9/16/09</td> <td>GPH</td> </tr> <tr> <td>A</td> <td>INITIAL RELEASE</td> <td></td> <td></td> <td></td> </tr> </table>		B	ADD DANIELS HX4 CRIMP TOOL AND Y146 DIE SET.	026	9/16/09	GPH	A	INITIAL RELEASE				<table border="1"> <tr> <td colspan="2">NEXUS STAMFORD, CONN</td> </tr> <tr> <td>SIZE C</td> <td>DWG. NO. TJ-106HC</td> </tr> </table>	NEXUS STAMFORD, CONN		SIZE C	DWG. NO. TJ-106HC
B	ADD DANIELS HX4 CRIMP TOOL AND Y146 DIE SET.	026	9/16/09	GPH												
A	INITIAL RELEASE															
NEXUS STAMFORD, CONN																
SIZE C	DWG. NO. TJ-106HC															

THIS DOCUMENT CONTAINS PROPRIETARY INFORMATION OF NEXUS, INCORPORATED AND SUCH INFORMATION MAY NOT BE DISCLOSED TO OTHERS FOR ANY PURPOSE OR USED FOR ANY PURPOSE WITHOUT THE WRITTEN CONSENT OF NEXUS.