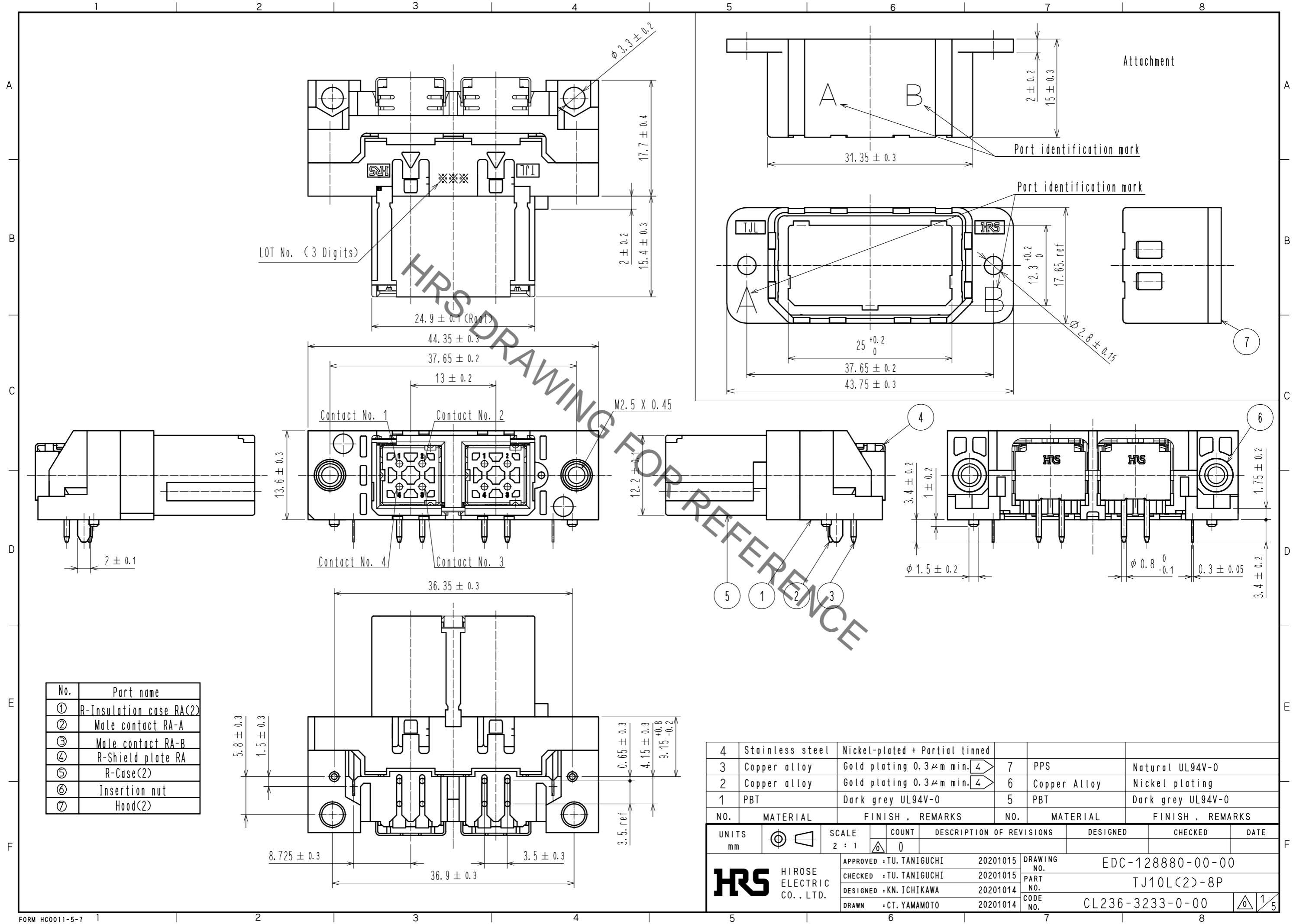


Jan.1.2022 Copyright 2022 HIROSE ELECTRIC CO., LTD. All Rights Reserved.
 In case of consideration for using Automotive equipment / device which demand high reliability, kindly contact our sales window correspondents.



No.	Part name
①	R-Insulation case RA(2)
②	Male contact RA-A
③	Male contact RA-B
④	R-Shield plate RA
⑤	R-Case(2)
⑥	Insertion nut
⑦	Hood(2)

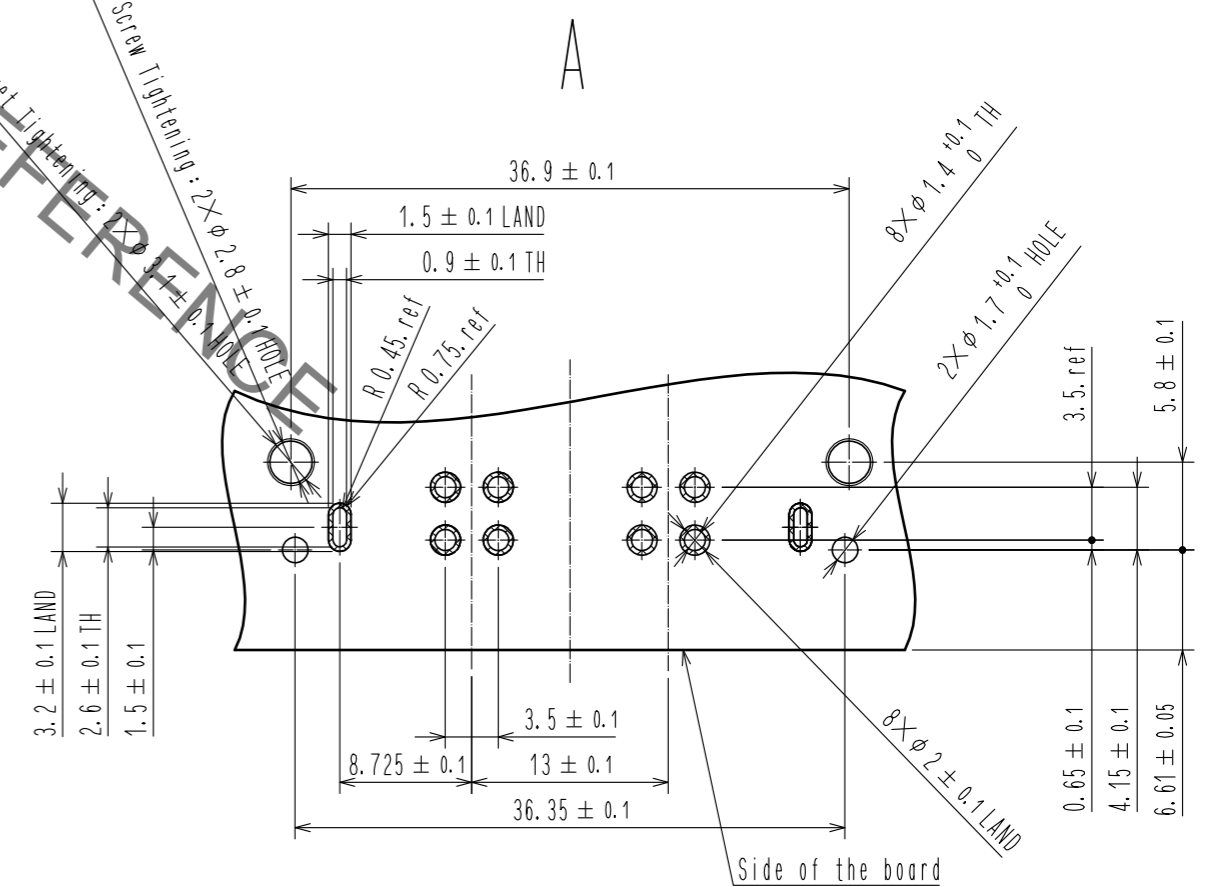
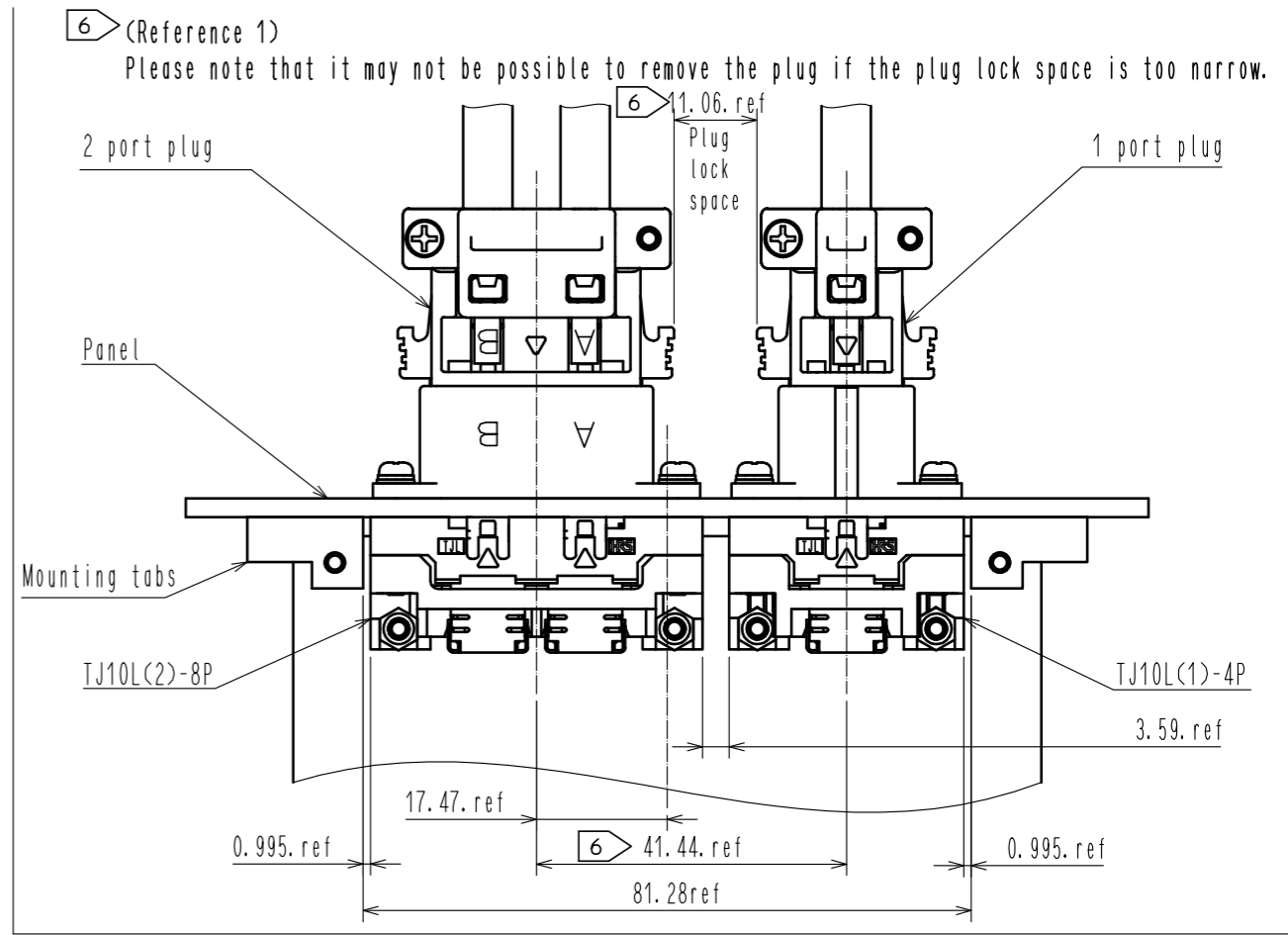
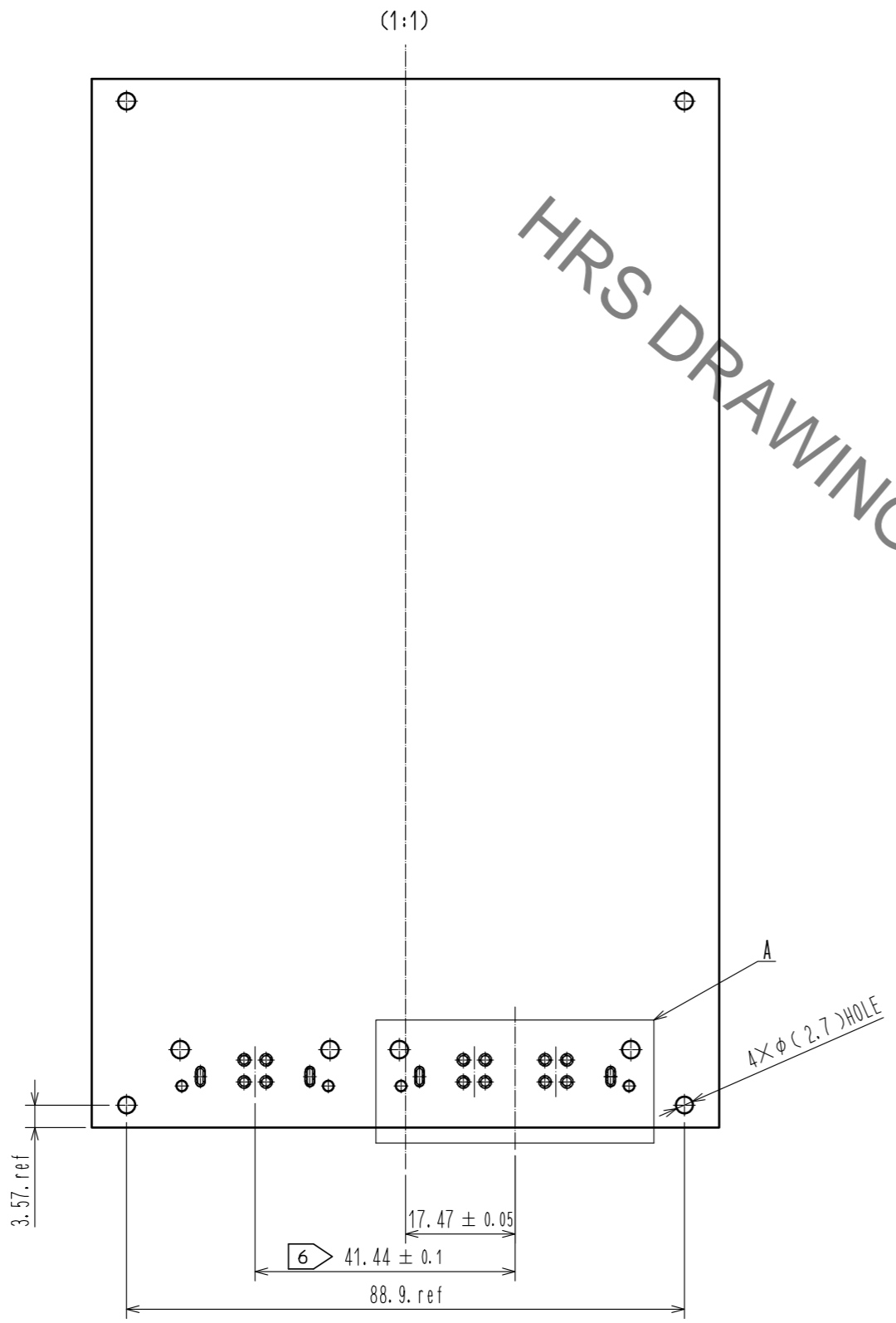
NO.	MATERIAL	FINISH . REMARKS	NO.	MATERIAL	FINISH . REMARKS
4	Stainless steel	Nickel-plated + Partial tinned	7	PPS	Natural UL94V-0
3	Copper alloy	Gold plating 0.3μm min. ④	6	Copper Alloy	Nickel plating
2	Copper alloy	Gold plating 0.3μm min. ④	5	PBT	Dark grey UL94V-0
1	PBT	Dark grey UL94V-0			

UNITS	SCALE	COUNT	DESCRIPTION OF REVISIONS	DESIGNED	CHECKED	DATE
mm	2 : 1	0				

HRS HIROSE ELECTRIC CO., LTD.	APPROVED : TU. TANIGUCHI	20201015	DRAWING NO.	EDC-128880-00-00
	CHECKED : TU. TANIGUCHI	20201015	PART NO.	TJ10L(2)-8P
	DESIGNED : KN. ICHIKAWA	20201014	CODE NO.	CL236-3233-0-00
	DRAWN : CT. YAMAMOTO	20201014		

Jan.1.2022 Copyright 2022 HIROSE ELECTRIC CO., LTD. All Rights Reserved.
 In case of consideration for using Automotive equipment / device which demand high reliability, kindly contact our sales window correspondents.

5 Recommended PCB drawing (1:1)



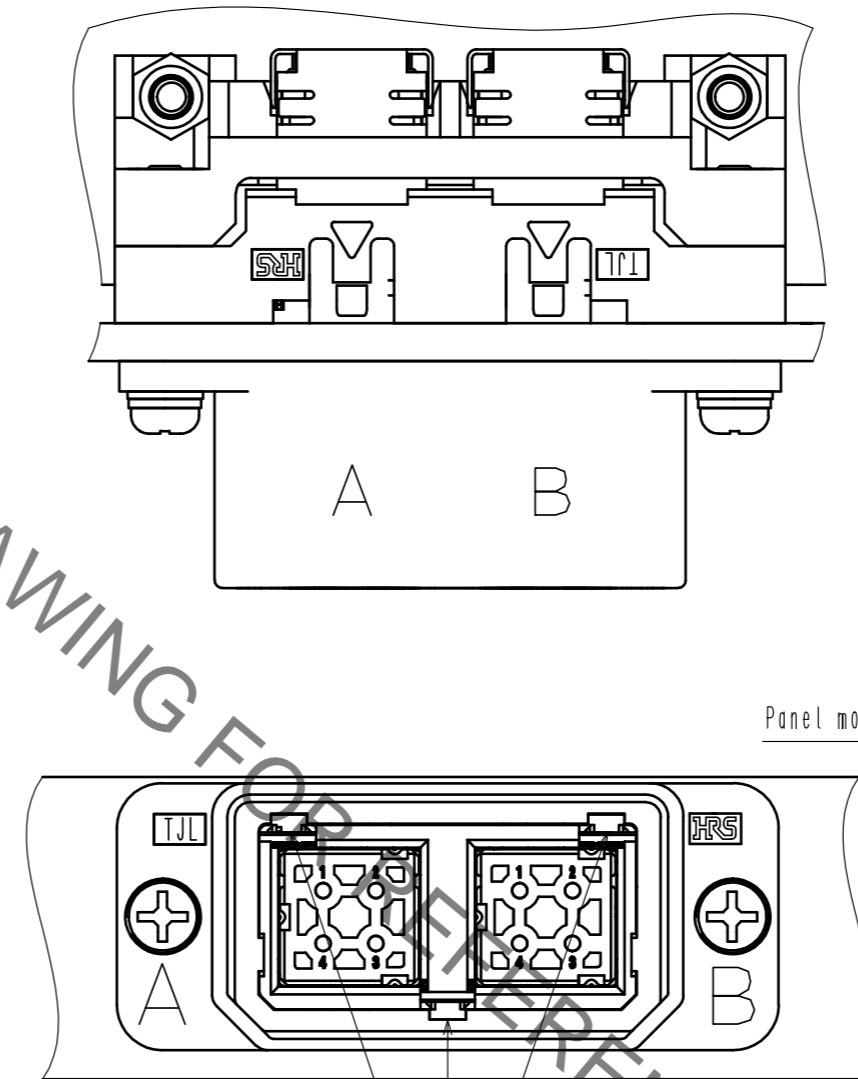
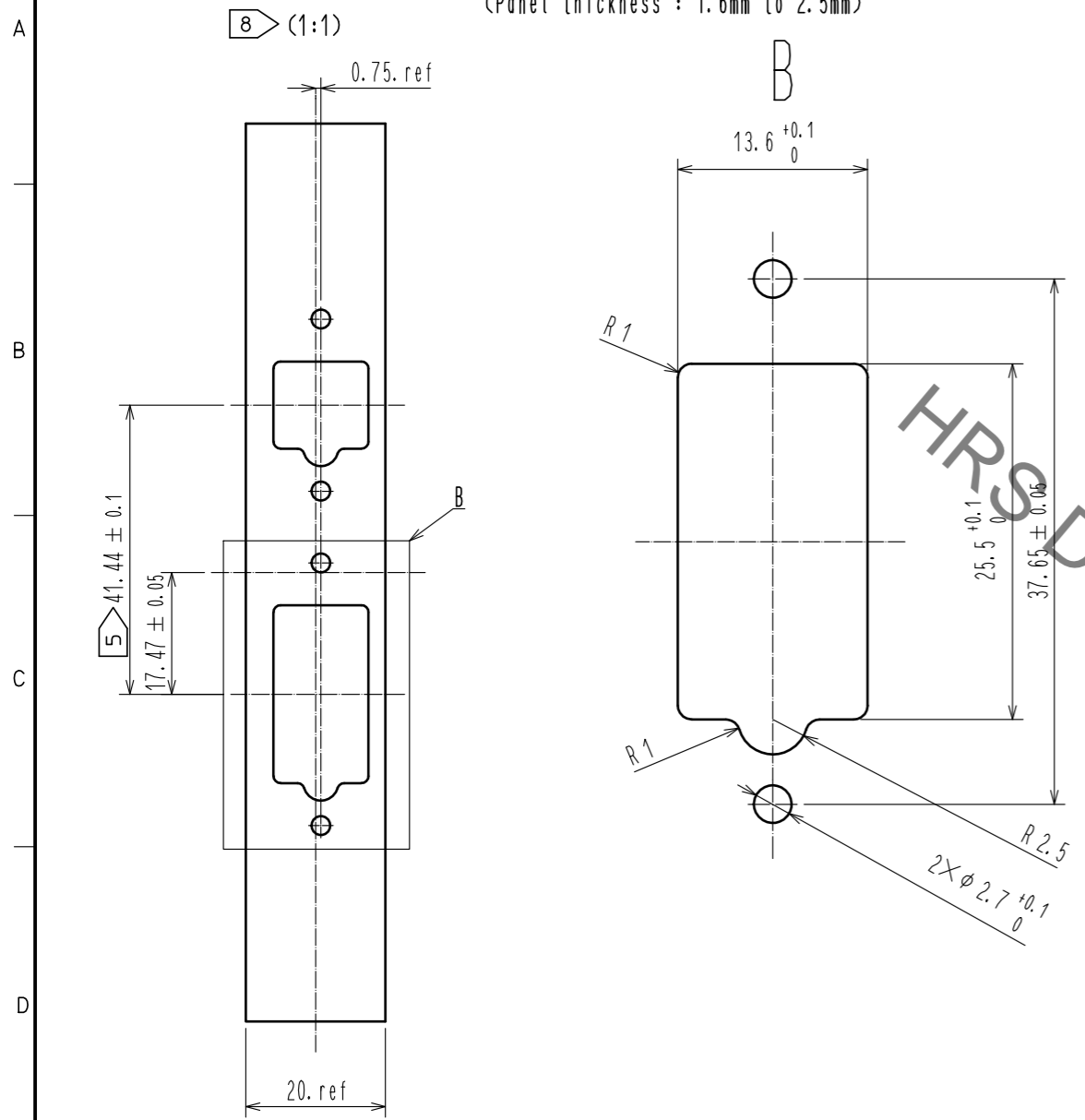
HRS	DRAWING NO.	EDC-128880-00-00
	PART NO.	TJ10L(2)-8P
	CODE NO.	CL236-3233-0-00
		2/5

Jan.1.2022 Copyright 2022 HIROSE ELECTRIC CO., LTD. All Rights Reserved.
In case of consideration for using Automotive equipment / device which demand high reliability, kindly contact our sales window correspondents.

Panel dimensions(reference)

Front side
(Panel thickness : 1.6mm to 2.5mm)

Panel mounting(Exploded drawing. FREE)



- Notes
- This product will be mated together with the TJL series 2 port plug.
 - Parts ① to ⑥, the assembled product and the attached part ⑦ will be delivered.
 - This product will be packed in a tray.
 - Because the male contact ②, ③ is plated by the barrel plating process, the gold plating will cover the whole contact with a minimum thickness of 0.3μm.
 - The recommended board dimensions are for reference when one of TJ10L(2)-8P:2port and TJ10L(1)-4P:1port are mounted on a 3U size Euro-board. The dimensions in parentheses should be in accordance with Euro-board standard dimensions.
 - 41.44±0.1 is an example of the pitch between connectors when one of TJ10L(2)-8P:2port and TJ10L(1)-4P:1port are mounted on a 3U-size Euro-board with Euro-board standard dimensions. If the pitch between connectors is too narrow, it may not be possible to remove the plug when mating, so please refer to (Reference 1) and design according to your needs.
 - Please note that this will vary depending on the board mounting method.
 - The clearance distance between the R-Shield RA plate ST (1 DIP) and the panel should be at the point with the shortest distance at least 1.76±0.3mm.
 - The key to prevent mismatching (sold separately) can be inserted in the 3 places shown in the drawing.
 - Please note that using panels and board mounting screws other than those designated may cause interference with the panel.
 - As a countermeasure for vibration, please fixate a cable of the plug side at 5 cm or less from the clamp fittings.

⑨ Key to prevent mismatching (sold separately)
(Part name:TJL-KY, Code number:CL236-3209-7-00) Board mounting screws

HRS	DRAWING NO.	EDC-128880-00-00
	PART NO.	TJ10L(2)-8P
	CODE NO.	CL236-3233-0-00
		△ 3/5

Jan.1.2022 Copyright 2022 HIROSE ELECTRIC CO., LTD. All Rights Reserved.
In case of consideration for using Automotive equipment / device which demand high reliability, kindly contact our sales window correspondents.

Recommended Assembly Procedure (Assuming Assembly into a VME rack)

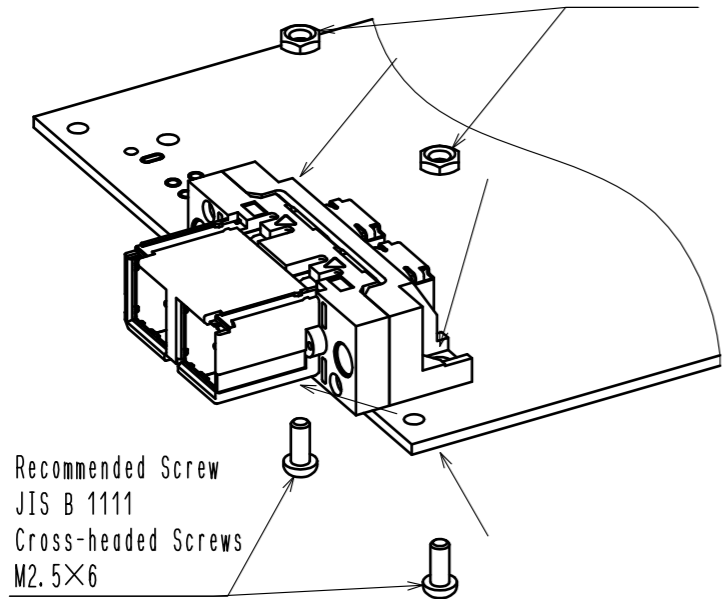
1. Secure the assembly to the board.

The unit can be secured to the board by using screws or rivets
Screws and rivets are not included in the package, so please select and prepare one that fits your design needs.

7 Please note that the dimensions of the board will vary depending on the selected board mounting method.

◆For Screw Tightening 7

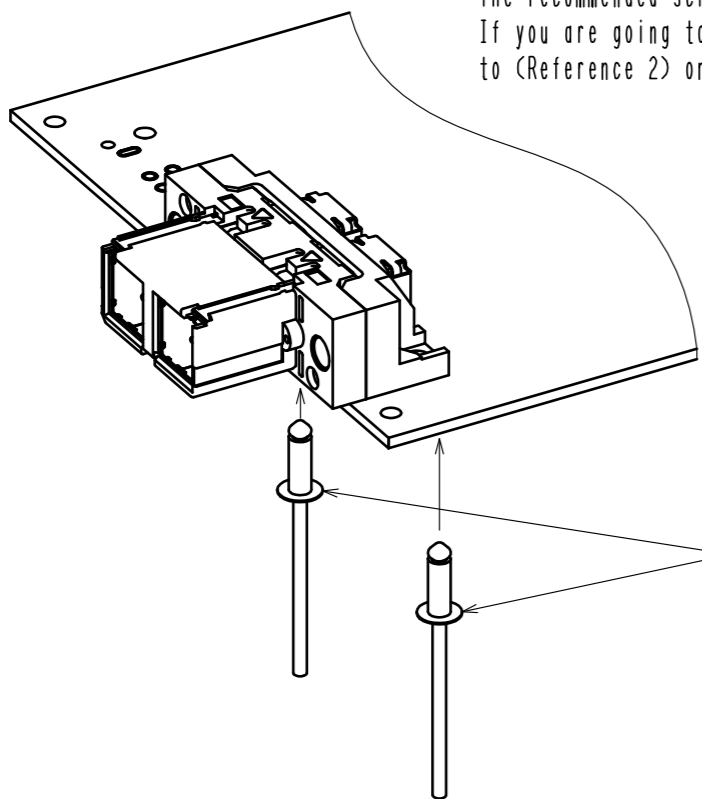
JIS B 1181
Hex nut
M2.5×0.45



Recommended Screw
JIS B 1111
Cross-headed Screws
M2.5×6

- The recommended screw tightening torque is $0.31 \pm 0.05 \text{N}\cdot\text{m}$.
- 10 Cross-hole screws with a length of 6mm or more can also be used. However, please note that it may interfere with the panel mounting screws.
- The recommended screws have been evaluated by HRS. If you are going to use other screws, please refer to (Reference 2) on the next page and check the compatibility in advance.

◆For Rivet Tightening 7



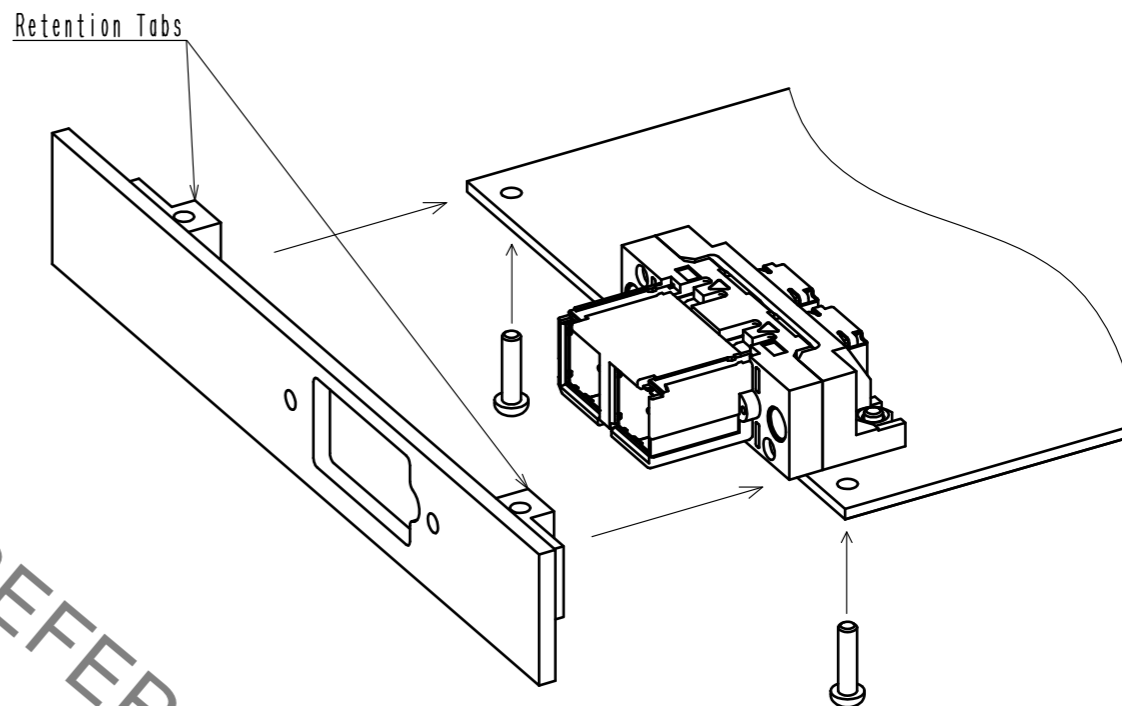
Recommended rivets
Manufactured by POP Rivets and Fasteners Ltd.
Soft Set Rivets
Rivet No. PAD30M3ABS

- The recommended rivets have been evaluated by HRS. If you are going to use other rivets, please check the compatibility in advance.

2. Soldering.

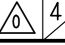
- Please perform wave soldering or hand soldering. Soldering should be done by soldering or hand soldering. Please refer to the product specification table for soldering. Please note that reflow mounting is not supported.
- When using two or more connectors in a row, please refer to (Reference 3) on the next page.

3. Fit the panel and tighten the panel (retention tabs) and the board with screws.



- Tighten the screws with the torque recommended by the panel manufacturer.

HRS DRAWING FOR REFERENCE

HRS	DRAWING NO.	EDC-128880-00-00		4/5
	PART NO.	TJ10L(2)-8P		
	CODE NO.	CL236-3233-0-00		