

Thermal cut-out thermostat TK24/ TK32/ TK24HT

Automatic or manual reset



design examples

Switches of this series are extremely robust with universal characteristics: they can be used as temperature monitors and controllers, current-capable up to 16 A, specifically adjustable hysteresis and low tolerance up to 3%. The plastic housing, the floor and the fastening are tension-free. The heat is applied directly to the thermo-bimetal snap-disc via the contact surface (bottom), and thus allows a very rapid reaction. The connections vary in dimensions and mounting angles (0 - 90°). Types TK24 and TK24HT are automatically resetting, whereas type TK32 is a manual-resetting switch.

Technical data

| ratings | | type | | | |
|---|---|---|------------------------------|-------------------------|---------------------------|
| | | TK24 | TK24HT | TK32 | |
| function | | automatic | | manual reset | |
| version | | normally closed/open | | normally closed | |
| ratings | rated current 250VAC (cosφ 0,95) | 16A | 10A | 10A | 16A |
| | switching cycles | 30,000 | 100,000 | 10,000 | 10,000 |
| | temperature T _A (steps in 5°C) | min +10°C up to max. 175°C * | min +10°C up to max. 175°C * | +200°C to max. +250°C * | +30°C up to max. +250°C * |
| tolerance in %, but not less than °C | | ±1, ±3 | | ±3, ±6, ±10 | ±3, ±6 |
| contact resistance, Ω, not more | | 0,05 | | | |
| hysteresis / reset temperature | | 20 ±5 | | 40 ±10 | |
| degree of protection of enclosure (EN60529) | | IP4X | | | |
| dielectric strength | | 1.500 | | | |
| suitable for use in protection class | | II, I | | | |
| certifications | VDE UL | All non-indicated tolerances according to DIN ISO 2768 mK | | | |

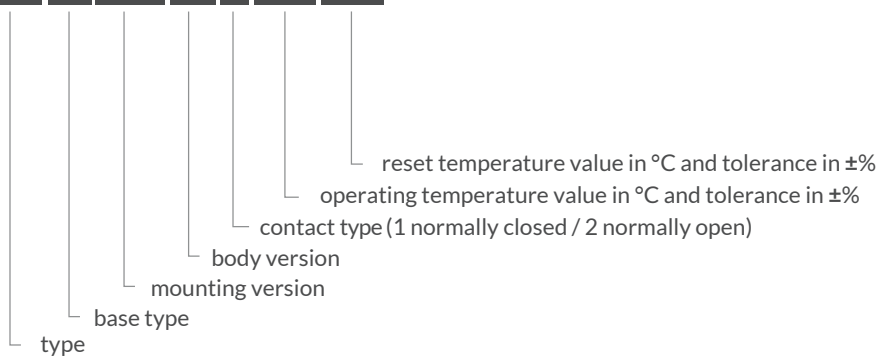
* other temperatures on request

| type | code | n.c.* normally closed = 1 | illustration | drawing dimensions (mm) | technical description |
|--------|--------------|------------------------------|---|--|---|
| TK24 | T01 MG01 B1P | x |  |  | terminals 6.3 x 0.8 mm plastic body, aluminium cap |
| TK24 | T02 MG01 B1P | x |  |  | bent terminals 6.3 x 0.8 mm plastic body, aluminium |
| TK32 | T01 MG01 B1P | x |  |  | manual reset terminals 6.3 x 0.8 mm plastic body, aluminium cap |
| TK32 | T02 MG01 B1P | x |  |  | manual reset bent terminals 6.3 x 0.8 mm plastic body, aluminium |
| TK24HT | T01 MG01 B1C | x |  |  | terminals 6.3 x 0.8 mm ceramic body, steel cap standard bracket loose |
| TK24HT | T02 MG01 B1C | x |  |  | bent terminals 6.3 x 0.8 mm ceramic body, steel cap standard bracket loose |
| TK32 | T01 MG01 B1C | x |  |  | manual reset terminals 6.3 x 0.8 mm ceramic body, aluminium / steel cap |
| TK32 | T02 MG01 B1C | x |  |  | manual reset bent terminals 6.3 x 0.8 mm ceramic body, aluminium / steel cap |

* normally open on request

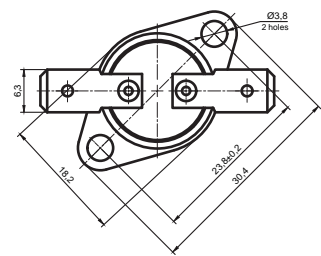
Ordering example

TK24 T01 MG01 B1P 1 50±3 40±3



Top View Dimensions

Dimensions (mm)



Microtherm Sentronic GmbH

Taschenwaldstraße 3
 75181 Pforzheim
 Germany
 Tel.: +49 7231 787-0
 Fax: +49 7231 787-155
 info@microtherm.de
 www.microtherm.de



MICROTHERM
sentronic