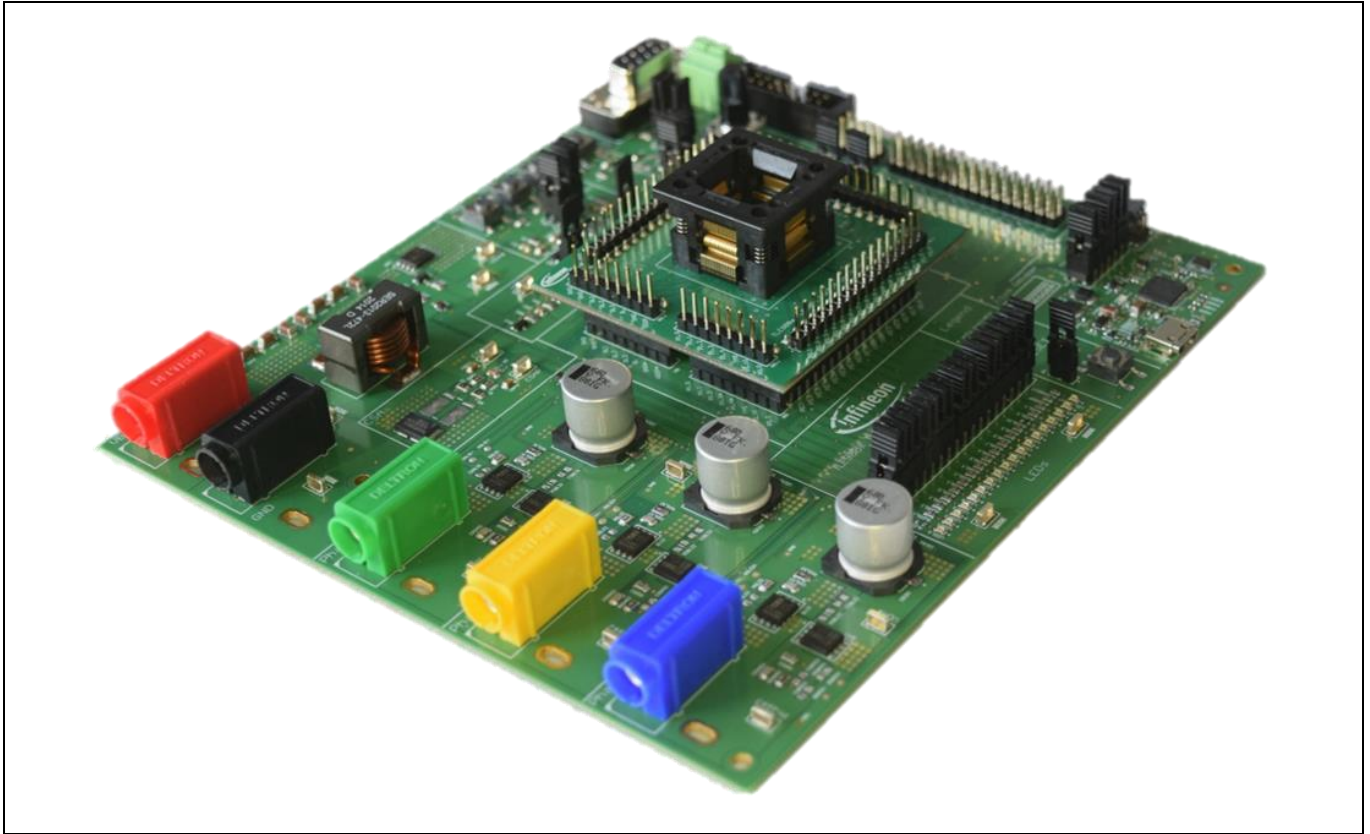


# TLE989x EvalBoard with TQFP/LQFP spring socket v01\_1 User Guide



## About this document

### Scope and purpose

This user guide is intended to help users operating the TLE989x EvalBoard with TQFP/LQFP spring socket, which is designed to evaluate hardware and software functionalities of the MOTIX™ MCU TLE988x and TLE989x family.

Additional information is provided about the board's layout, jumper settings, interface and debug options. It introduces the evaluation platform as well as how to write software and download it to the MOTIX™ MCU TLE988x or TLE989x.

### Intended audience

This document is intended for anyone using the TLE989x EvalBoard with TQFP/LQFP spring socket.

### Evaluation Board

This board will be used during design in, for evaluation and measurement of characteristics, and proof of data sheet specifications.

*Note:* PCB and auxiliary circuits are NOT optimized for final customer design.

---

**Important notice****Important notice**

**“Evaluation Boards and Reference Boards” shall mean products embedded on a printed circuit board (PCB) for demonstration and/or evaluation purposes, which include, without limitation, demonstration, reference and evaluation boards, kits and design (collectively referred to as “Reference Board”).**

**Environmental conditions have been considered in the design of the Evaluation Boards and Reference Boards provided by Infineon Technologies. The design of the Evaluation Boards and Reference Boards has been tested by Infineon Technologies only as described in this document. The design is not qualified in terms of safety requirements, manufacturing and operation over the entire operating temperature range or lifetime.**

**The Evaluation Boards and Reference Boards provided by Infineon Technologies are subject to functional testing only under typical load conditions. Evaluation Boards and Reference Boards are not subject to the same procedures as regular products regarding returned material analysis (RMA), process change notification (PCN) and product discontinuation (PD).**

**Evaluation Boards and Reference Boards are not commercialized products, and are solely intended for evaluation and testing purposes. In particular, they shall not be used for reliability testing or production. The Evaluation Boards and Reference Boards may therefore not comply with CE or similar standards (including but not limited to the EMC Directive 2004/EC/108 and the EMC Act) and may not fulfill other requirements of the country in which they are operated by the customer. The customer shall ensure that all Evaluation Boards and Reference Boards will be handled in a way which is compliant with the relevant requirements and standards of the country in which they are operated.**

**The Evaluation Boards and Reference Boards as well as the information provided in this document are addressed only to qualified and skilled technical staff, for laboratory usage, and shall be used and managed according to the terms and conditions set forth in this document and in other related documentation supplied with the respective Evaluation Board or Reference Board.**

**It is the responsibility of the customer’s technical departments to evaluate the suitability of the Evaluation Boards and Reference Boards for the intended application, and to evaluate the completeness and correctness of the information provided in this document with respect to such application.**

**The customer is obliged to ensure that the use of the Evaluation Boards and Reference Boards does not cause any harm to persons or third party property.**

**The Evaluation Boards and Reference Boards and any information in this document is provided "as is" and Infineon Technologies disclaims any warranties, express or implied, including but not limited to warranties of non-infringement of third party rights and implied warranties of fitness for any purpose, or for merchantability.**

**Infineon Technologies shall not be responsible for any damages resulting from the use of the Evaluation Boards and Reference Boards and/or from any information provided in this document. The customer is obliged to defend, indemnify and hold Infineon Technologies harmless from and against any claims or damages arising out of or resulting from any use thereof.**

**Infineon Technologies reserves the right to modify this document and/or any information provided herein at any time without further notice.**

Safety precautions

**Safety precautions**

Note: Please note the following warnings regarding the hazards associated with development systems.

**Table 1 Safety precautions**






|   |  |
|---|--|
|    | <p><b>Caution:</b> The heat sink and device surfaces of the evaluation or reference board may become hot during testing. Hence, necessary precautions are required while handling the board. Failure to comply may cause injury.</p>   |
|    | <p><b>Caution:</b> Only personnel familiar with the drive, power electronics and associated machinery should plan, install, commission and subsequently service the system. Failure to comply may result in personal injury and/or equipment damage.</p>   |
|    | <p><b>Caution:</b> The evaluation or reference board contains parts and assemblies sensitive to electrostatic discharge (ESD). Electrostatic control precautions are required when installing, testing, servicing or repairing the assembly. Component damage may result if ESD control procedures are not followed. If you are not familiar with electrostatic control procedures, refer to the applicable ESD protection handbooks and guidelines.</p> |
|   | <p><b>Caution:</b> A drive that is incorrectly applied or installed can lead to component damage or reduction in product lifetime. Wiring or application errors such as undersizing the motor, supplying an incorrect or inadequate DC supply, or excessive ambient temperatures may result in system malfunction.</p>   |
|  | <p><b>Caution:</b> The evaluation or reference board is shipped with packing materials that need to be removed prior to installation. Failure to remove all packing materials that are unnecessary for system installation may result in overheating or abnormal operating conditions.</p>   |

Table of contents

**Table of contents**

**About this document..... 1**

**Important notice ..... 2**

**Safety precautions..... 3**

**Table of contents ..... 4**

**1 The board at a glance..... 5**

1.1 Delivery content .....5

1.2 Block diagram.....5

1.3 Main features .....6

1.4 Technical data .....7

**2 System and functional description ..... 8**

2.1 Board Information.....8

2.1.1 Connectors .....8

2.1.2 Test points .....10

2.1.3 LEDs .....11

2.1.4 Jumpers.....13

2.1.5 Push Buttons .....15

2.2 Interfaces.....16

2.2.1 Socket boards.....16

2.2.2 Motor Power Stage.....17

2.2.3 CAN .....18

2.2.4 Potentiometer .....20

2.2.5 Current Sense Amplifier (CSA) .....20

2.2.6 High voltage, digital and analog Inputs/ Outputs.....20

2.2.7 Debugging .....22

**3 Assembly Options.....23**

**4 Software toolchain .....25**

4.1 Keil µVision 5 .....25

4.2 Infineon Config Wizard .....25

4.3 TLE988x\_9x SDK .....25

4.4 Debug connection setup .....25

**5 Design Files .....27**

5.1 BOM of the TLE989x EvalBoard with TQFP/LQFP spring socket.....27

5.2 Schematics of the TLE989x EvalBoard with TQFP/LQFP spring socket .....33

5.3 Layout of the TLE989x EvalBoard with TQFP/LQFP spring socket .....40

5.4 Schematics of the LQFP64 Socketboard .....44

5.5 Layout of the LQFP64 Socketboard .....45

5.6 Schematics of the TQFP48 Socketboard .....46

5.7 Layout of the TQFP48 Socketboard.....47

**6 References and appendices .....48**

6.1 Abbreviations and definitions.....48

**Revision history.....49**

The board at a glance

# 1 The board at a glance

This board is designed to provide a simple, easy-to-use tool for getting familiar with Infineon’s MOTIX™ MCU IC TLE988x and TLE989x devices.

Sockets for LQFP64 and TQFP48 package provide the possibility to test and evaluate all ICs of the MOTIX™ MCU TLE988x and TLE989x family. LQFP64 variants of the IC can also be soldered directly onto the Evalboard. The board is compatible for both 3-phase and 2-phase variants. Every pin of the IC is connectable via rows of pin headers.

The board is protected against reverse polarity of the input voltage supply. A battery LED indicates that the board is connected to the supply in the correct way. Otherwise, reverse polarity protection secures the board from damage by cross connection.

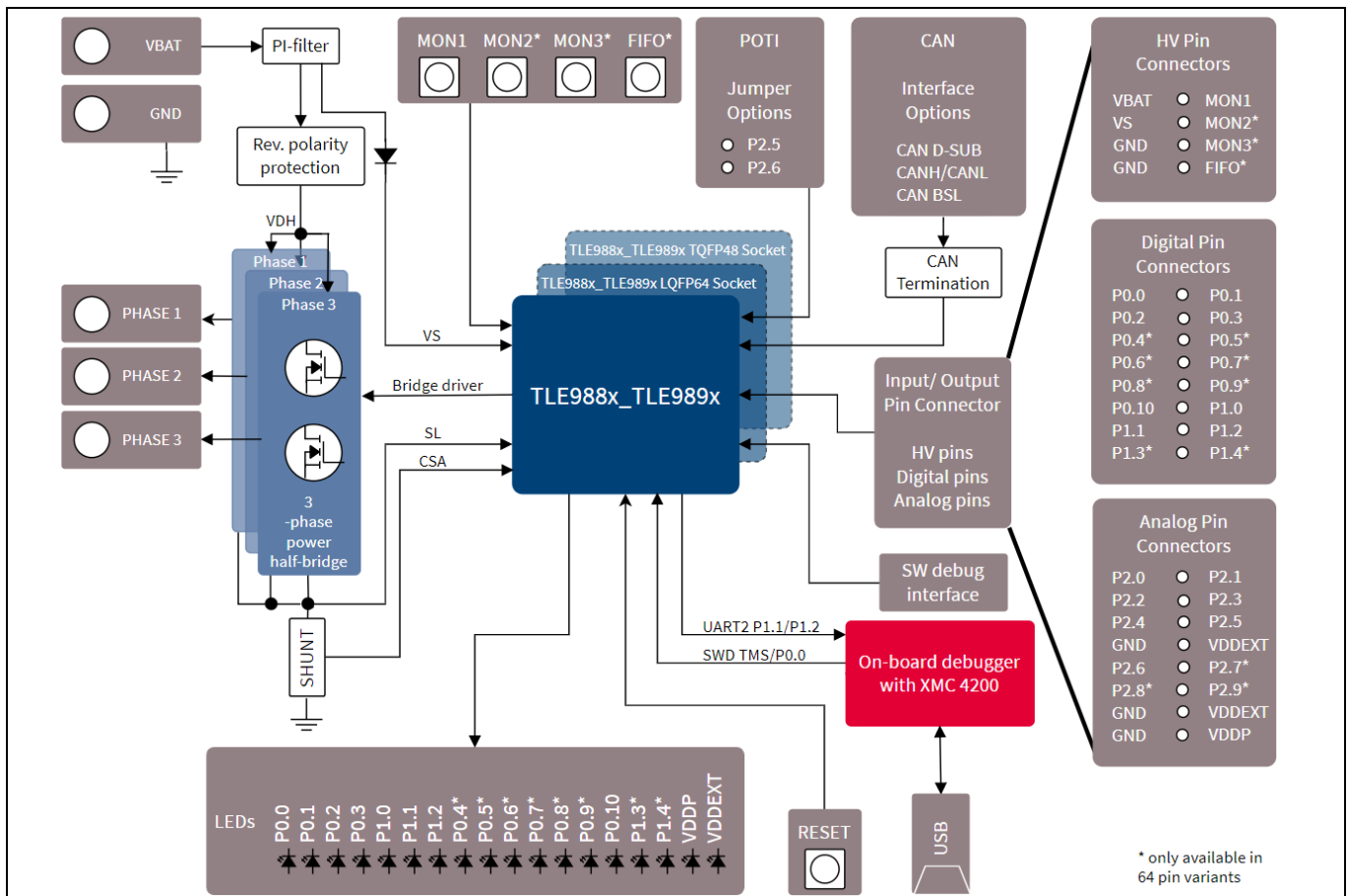
Three MOSFET half bridges are placed on the board to drive a motor. The board is ready to be connected to a car supply or similar and offers a USB port to use the on-board SWD debugger.

The evaluation board can be operated by standard laboratory equipment.

## 1.1 Delivery content

The TLE989x EvalBoard with TQFP/LQFP spring socket board is delivered together with one socket board, either for LQFP64 pin package or for TQFP48 pin package devices, and a USB cable to connect the board to a PC. A MOTIX™ MCU TLE988x or TLE989x device is not included.

## 1.2 Block diagram





The board at a glance

Figure 1 Block Diagram

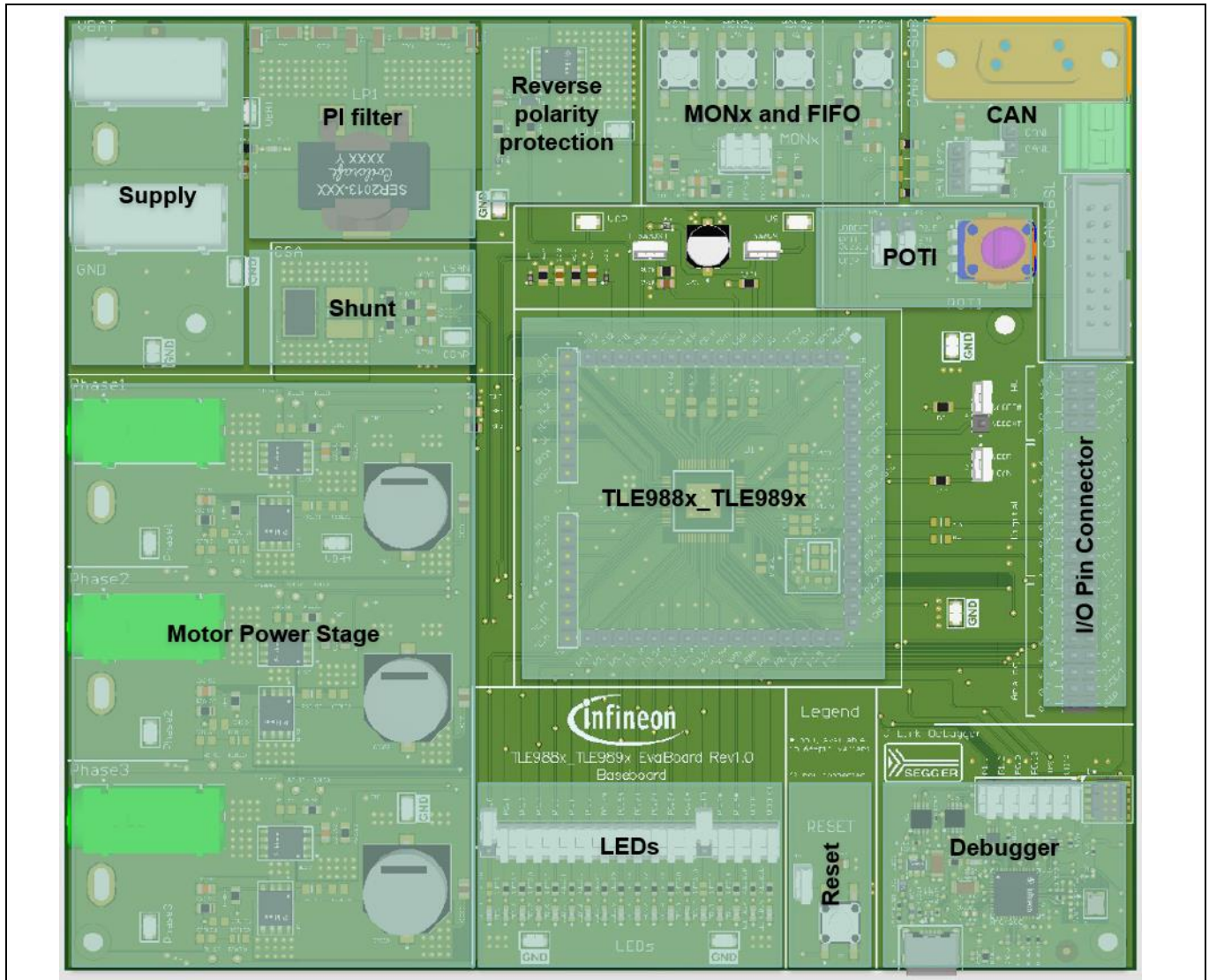


Figure 2 Hardware Implementation

### 1.3 Main features

- Compatible connector for socket board of LQFP64 pin package and TQFP48 pin package
- Direct placement option for LQFP64 pin package device
- SEGGER J-Link on-board debugger
- Motor power stage including three mosfet half-bridges and motor connectors
- Two placement options for different shunt resistors
- Supply voltage including PI filter and reverse polarity protection
- Multiple CAN connection options (CAN D-SUB, CAN-BSL, CANH/L) and option for CAN termination
- Push buttons are available for MON, FIFO and Reset pins
- LEDs are available for all GPIOs



The board at a glance

1.4 Technical data

Technical data is specified in **Table 2**. Current capability is limited by the default assembly of banana plugs and the 10 W shunt resistor. Higher current capability up to 30 A can be reached by adjusting the battery and motor connectors, as well as replacing the shunt resistor. For placement options of the shunt resistor, refer to chapter about **Current Sense Amplifier (CSA)**. For details on battery and motor connectors, refer to **Table 3** and chapter about **Motor Power Stage**. According savety measures need to be applied, if working with higher currents than the specified maximum ratings.

**Table 2** Technical data

|                |                          |
|----------------|--------------------------|
| Voltage supply | Max. 28 V <sup>1)</sup>  |
| Motor current  | Max. 25 A <sup>1)</sup>  |
| Power          | Max. 330 W <sup>1)</sup> |
| Pin ports      | 5 V                      |

1) Specified by design

System and functional description

## 2 System and functional description

### 2.1 Board Information

#### 2.1.1 Connectors

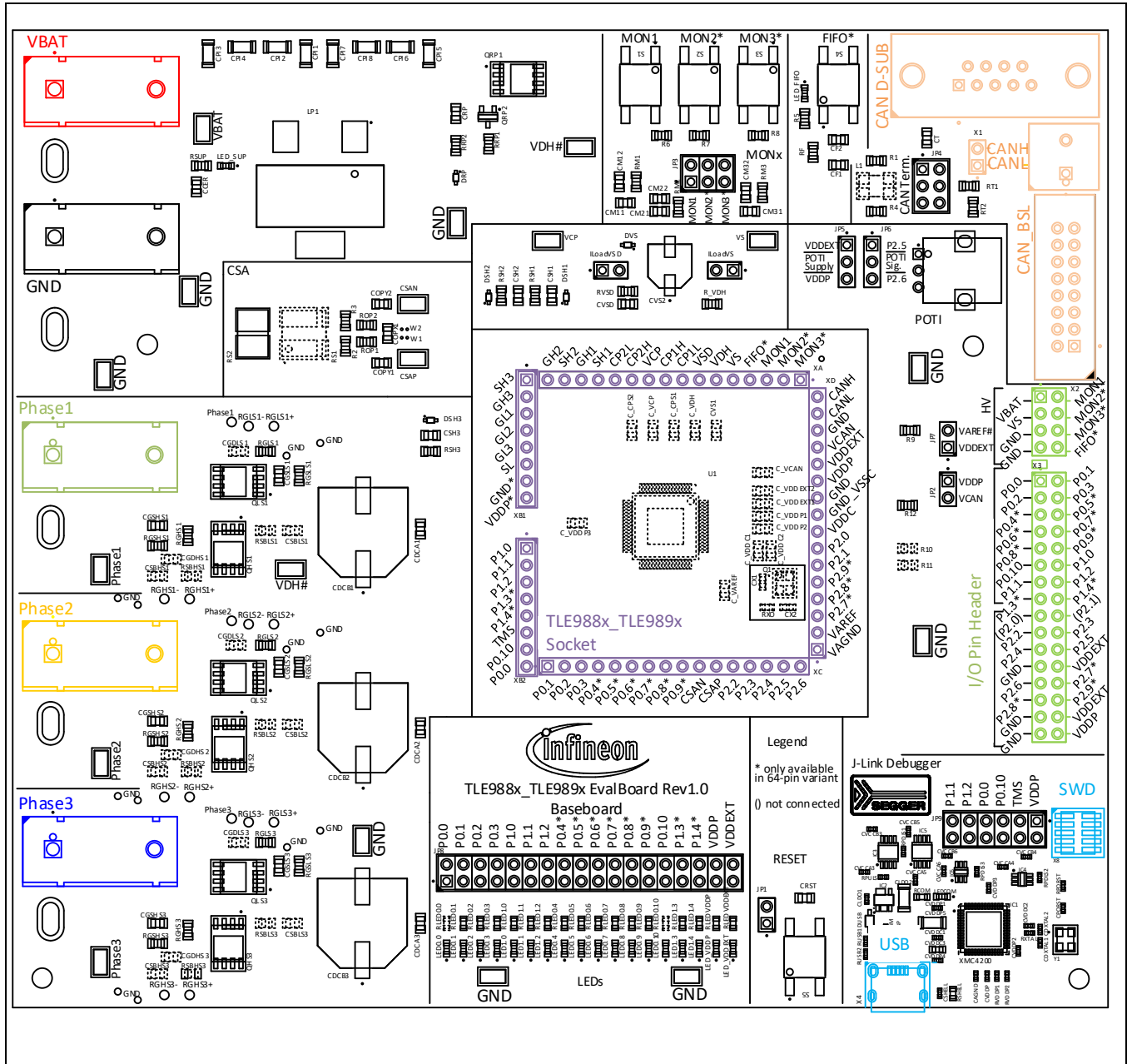


Figure 3 Connectors

Table 3 Connectors

|               |  |
|---------------|--|
| VBAT, GND     | Banana jacks for power supply (red) and ground (black). For applications with high current, cables can also be soldered directly to pads next to the banana jacks            |
| Phase 1, 2, 3 | Banana jacks for motor connection. The three jacks for Phase1 (green), Phase 2 (yellow) and Phase3 (blue) provide access to the <b>Motor Power Stage</b> and are intended to |



---

**System and functional description**

|                        |  |
|------------------------|--|
|                        | connect a motor. For applications with high current, cables can also be soldered directly to pads next to the banana jacks |
| TLE988x_TLE989x Socket | Pin headers to connect on of the TLE988x_TLE989x <b>Socket boards</b>  |
| CAN D-SUB              | Standard D-SUB DE-09 connector to connect <b>CAN</b> communication lines to the device                                     |
| CANH/ CANL             | Terminal block with clamps to connect <b>CAN</b> cables to the device. For jumper cables the pin header X1 can be used.    |
| CAN BSL                | Bootstrap loader (BSL) interface to connect <b>CAN</b> communication lines to the device                                   |
| I/O Pin Header         | Two row pin header to access all <b>High voltage, digital and analog Inputs/ Outputs</b> of the device                     |
| SWD                    | <b>Debugging</b> interface to connect external debugger  |
| USB                    | USB connector for micro-USB cable to connect the on-board debugger to a PC for <b>Debugging</b>                            |

System and functional description

2.1.2 Test points

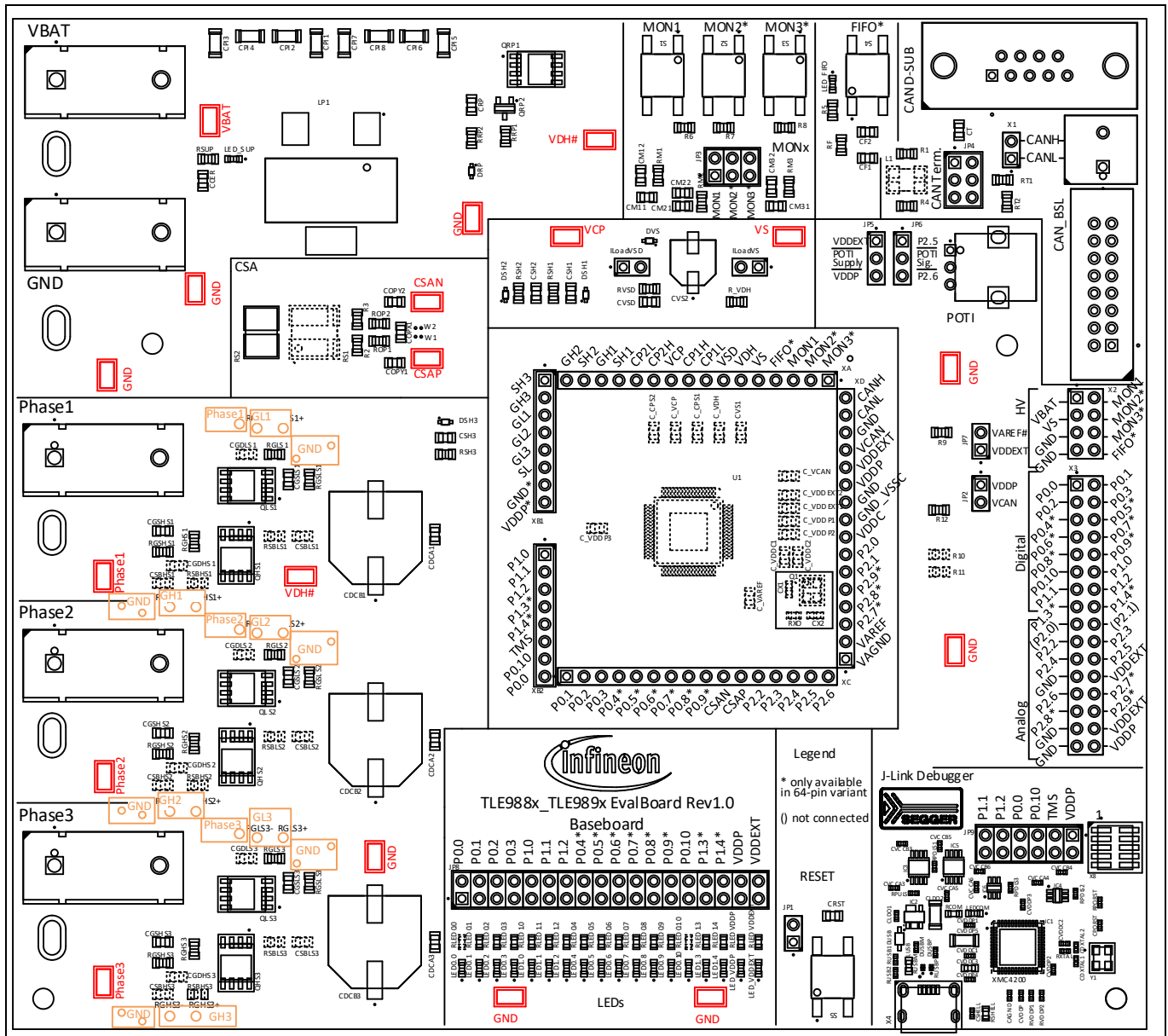


Figure 4 Test Points

Table 4 Test Points

|               |  |
|---------------|--|
| VBAT          | Test point to measure battery voltage  |
| VS            | Test point to measure device supply voltage  |
| VCP           | Test point to measure charge pump voltage  |
| 8 x GND       | Test points to connect to ground   |
| 2 x VDH#      | Test points to measure VDH# voltage at the drain of the high side mosfets. To measure VDH at the pin of the device, use the socket pin header. Between VDH# node on the board and VDH pin of the device there is a resistor R_VDH. |
| CSAN, CSAP    | Test points to measure differential voltage at current sense amplifier inputs of the device  |
| Phase 1, 2, 3 | Test points to measure motor phase voltages  |

System and functional description

|  |   |
|--|---|
| Phase 1, 2, 3 and 12 x GND (indicated in orange in <b>Figure 4</b> ) | Vias which can be used as testpoints to measure motor phase voltages with a probe tip and GND spring  |
| GH1, GH2, GH3 (indicated in orange in <b>Figure 4</b> )              | Vias which can be used as testpoints to measure gate current over gate resistor RGHSx of high side mosfets with a probe tip, or to solder extension cables to measure with a differential probe |
| GL1, GL2, GL3 (indicated in orange in <b>Figure 4</b> )              | Vias which can be used as testpoints to measure gate current over gate resistor RGLSx of low side mosfets with a probe tip, or to solder extension cables to measure with a differential probe  |

2.1.3 LEDs

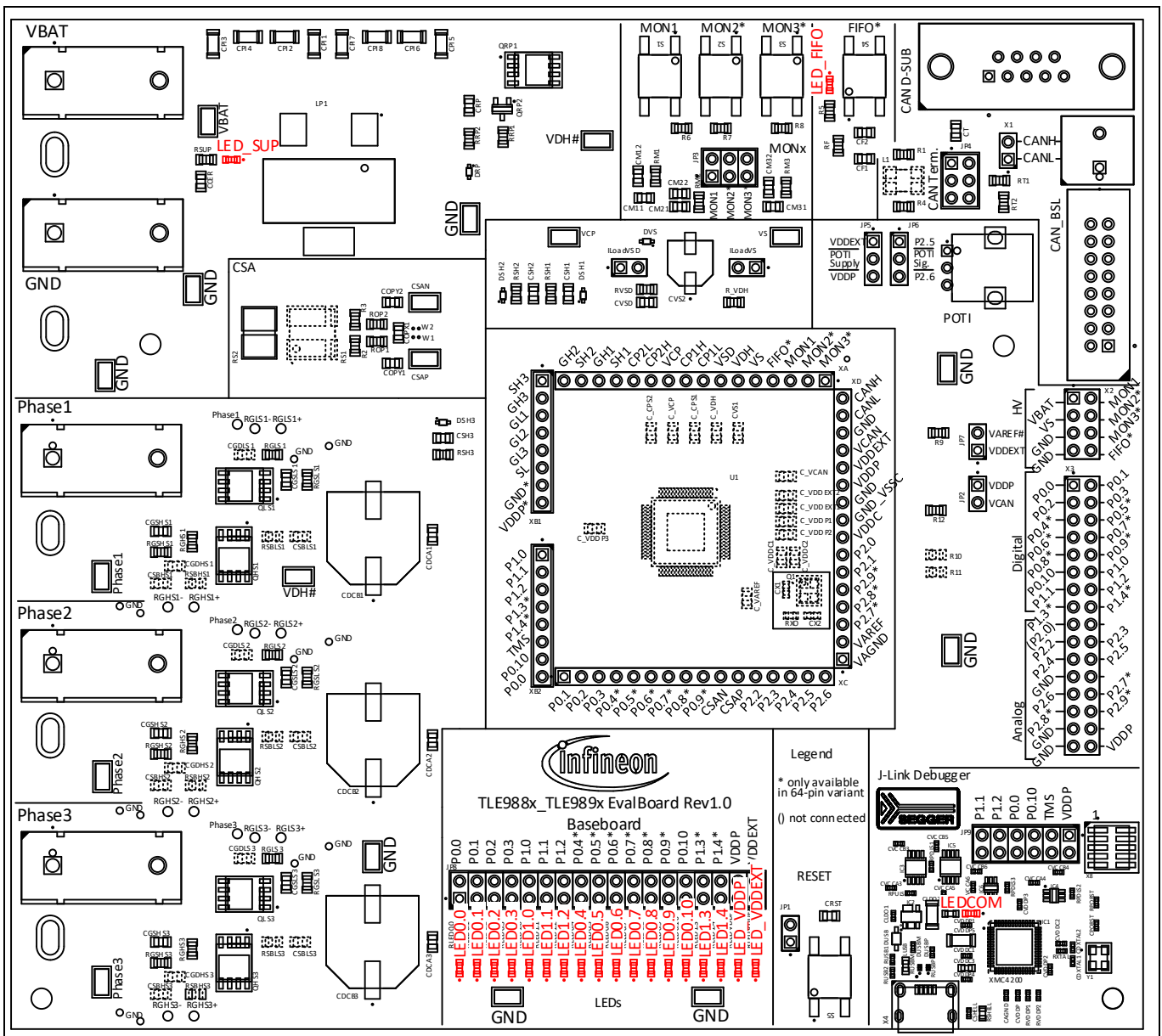


Figure 5 LEDs

System and functional description

**Table 5 LEDs**

|            |  |
|------------|--|
| LED_SUP    | Indicates supply voltage is active   |
| LED_FIFO   | Indicates FIFO is active   |
| LEDCOM     | Indicates on-board debugger communication is active  |
| LED0.0     | Can be connected to GPIO P0.0 with jumper JP8, as described in <b>2.1.4</b> . Since this pin is used for programming the device, it is disconnected by default; connecting resistor RLED0.0 is not populated   |
| LED 0.1    | Can be connected to GPIO P0.1 with jumper JP8, as described in <b>2.1.4</b>  |
| LED 0.2    | Can be connected to GPIO P0.2 with jumper JP8, as described in <b>2.1.4</b>  |
| LED 0.3    | Can be connected to GPIO P0.3 with jumper JP8, as described in <b>2.1.4</b>  |
| LED 1.0    | Can be connected to GPIO P1.0 with jumper JP8, as described in <b>2.1.4</b>  |
| LED 1.1    | Can be connected to GPIO P1.1 with jumper JP8, as described in <b>2.1.4</b>  |
| LED 1.2    | Can be connected to GPIO P1.2 with jumper JP8, as described in <b>2.1.4</b>  |
| LED 0.4    | Can be connected to GPIO P0.4 with jumper JP8, as described in <b>2.1.4</b> (only available in 64 pin variant of MOTIX™ MCU TLE988x/TLE989x)   |
| LED 0.5    | Can be connected to GPIO P0.5 with jumper, as described in <b>2.1.4</b> (only available in 64 pin variant of MOTIX™ MCU TLE988x/TLE989x)   |
| LED 0.6    | Can be connected to GPIO P0.6 with jumper JP8, as described in <b>2.1.4</b> (only available in 64 pin variant of MOTIX™ MCU TLE988x/TLE989x)   |
| LED 0.7    | Can be connected to GPIO P0.7 with jumper JP8, as described in <b>2.1.4</b> (only available in 64 pin variant of MOTIX™ MCU TLE988x/TLE989x)   |
| LED 0.8    | Can be connected to GPIO P0.8 with jumper JP8, as described in <b>2.1.4</b> (only available in 64 pin variant of MOTIX™ MCU TLE988x/TLE989x)   |
| LED 0.9    | Can be connected to GPIO P0.9 with jumper JP8, as described in <b>2.1.4</b> (only available in 64 pin variant of MOTIX™ MCU TLE988x/TLE989x)   |
| LED 0.10   | Can be connected to GPIO P0.10 with jumper JP8, as described in <b>2.1.4</b> . Since this pin is used for programming the device, it is disconnected by default; connecting resistor RLED0.10 is not populated |
| LED 1.3    | Can be connected to GPIO P1.3 with jumper JP8, as described in <b>2.1.4</b> (only available in 64 pin variant of MOTIX™ MCU TLE988x/TLE989x)   |
| LED 1.4    | Can be connected to GPIO P1.4 with jumper JP8, as described in <b>2.1.4</b> (only available in 64 pin variant of MOTIX™ MCU TLE988x/TLE989x)   |
| LED_VDDP   | Can be connected to VDDP with jumper JP8, as described in <b>2.1.4</b> . Indicates VDDP is active  |
| LED_VDDEXT | Can be connected to VDDEXT with jumper JP8, as described in <b>2.1.4</b> . Indicates VDDEXT is active  |

System and functional description

2.1.4 Jumpers

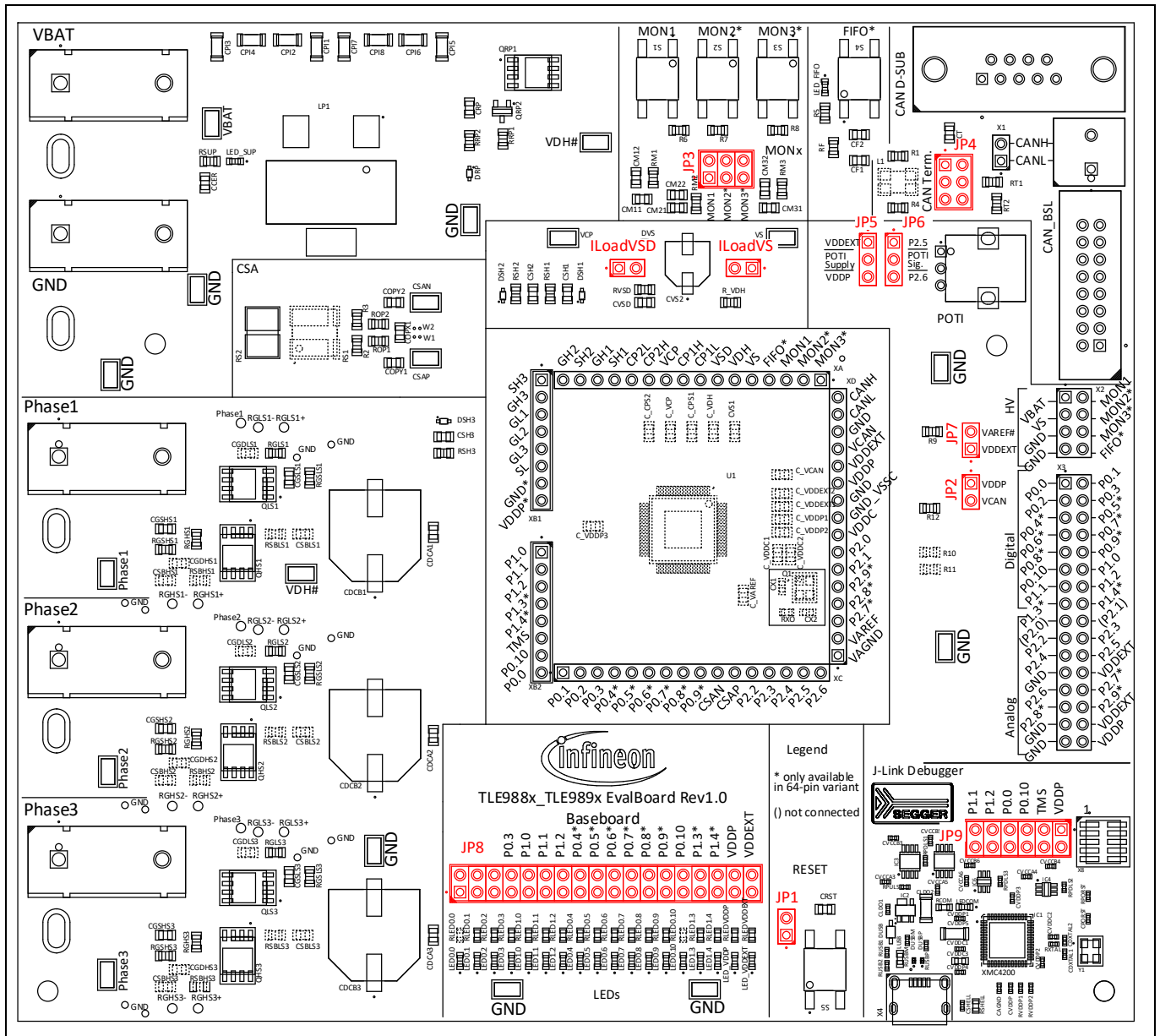


Figure 6 Jumpers

Table 6 Jumpers

|     |  |
|-----|--|
| JP1 | Set jumper to connect RESET button to RESET pin. Open it to disconnect RESET button from RESET pin. Jumper is closed by default                |
| JP2 | Set jumper to connect VDDP to VCAN pin in order to supply CAN with VDDP. Open it to disconnect VDDP from VCAN pin. Jumper is closed by default |
| JP3 | Set jumper to connect MONx button to MONx pin. Open it to disconnect MONx button from MONx pin. Jumpers are closed by default                  |
| JP4 | Set jumper to terminate <b>CAN</b> communication line. Jumpers are open by default   |
| JP5 | Set jumper to select <b>Potentiometer</b> supply. Open it to disconnect <b>Potentiometer</b> from supply. Jumper is set to VDDP by default     |



**System and functional description**

|          |   |
|----------|---|
| JP6      | Set jumper to select analog pin of device for the <b>Potentiometer</b> signal. Open it to disconnect <b>Potentiometer</b> signal from analog pin of device. Jumper is set to P2.6 by default  |
| JP7      | Set jumper to connect VDDEXT to VAREF# in order to supply VAREF with VDDEXT. Open it to disconnect VDDEXT from VAREF#. Note that there is a resistor R9 between VAREF# node on the board and VAREF pin of the device. Jumper is open by default |
| IloadVSD | Set jumper to connect VSD pin to the board supply. Open it to use the header to connect a multimeter to measure the charge-pump current consumption. Without any connection the charge-pump is not supplied. Jumper is closed by default        |
| IloadVS  | Set jumper to connect VS pin to the board supply. Open it to use the header to connect a multimeter to measure the device current consumption. Without any connection the device is not supplied. Jumper is closed by default                   |
| JP8      | Set jumpers to connect GPIOs to <b>LEDs</b> . Jumpers are closed by default, except for LED0.0 and LED0.10  |
| JP9      | Set jumpers to use on-board debugger for <b>Debugging</b> . Open them to disconnect on-board debugger, if pins are used for different purpose. Jumpers are closed by default  |

System and functional description

2.1.5 Push Buttons

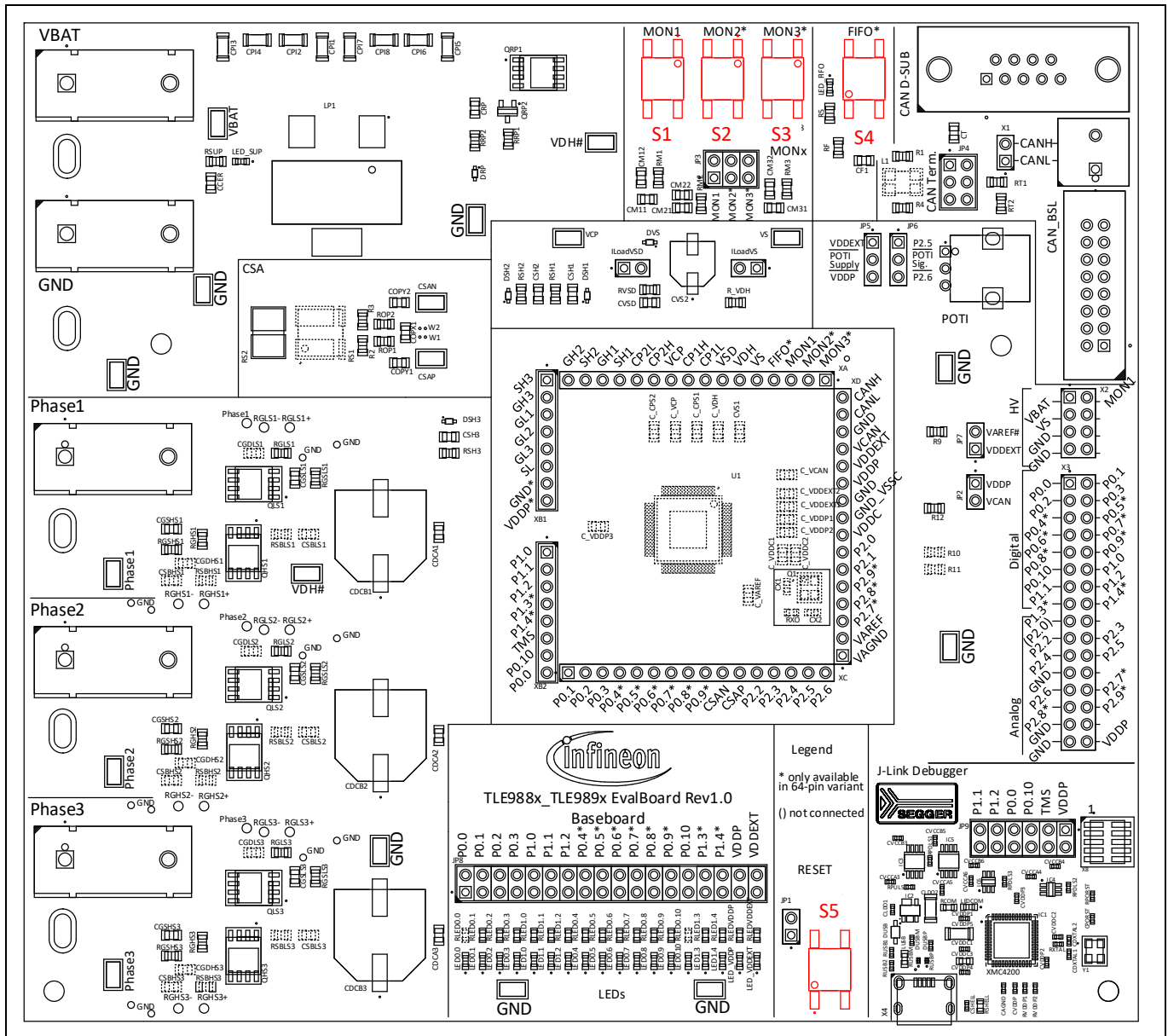


Figure 7 Push Buttons

Table 7 Push Buttons

|    |   |
|----|---|
| S1 | MON1 push button can be connected to MON 1 pin of the device with jumper JP3, as described in <b>2.1.4</b>  |
| S2 | MON2 push button can be connected to MON 2 pin of the device with jumper, as described in <b>2.1.4</b> (only available in 64 pin variant of MOTIX™ MCU TLE988x/TLE989x)     |
| S3 | MON3 push button can be connected to MON 3 pin of the device with jumper JP3, as described in <b>2.1.4</b> (only available in 64 pin variant of MOTIX™ MCU TLE988x/TLE989x) |
| S4 | FIFO push button is connected to FIFO pin of the device (only available in 64 pin variant of MOTIX™ MCU TLE988x/TLE989x)  |
| S5 | RESET push button can be connected to RESET pin of the device with jumper JP1, as described in <b>2.1.4</b>   |

System and functional description

2.2 Interfaces

2.2.1 Socket boards

Two different socket boards are available for the TLE989x EvalBoard with TQFP/LQFP spring socket, one for LQFP64 package and one for TQFP48 package. Devices of the same package can be exchanged with the plastic spring socket on the socket boards. Measurements can be performed close to the devices pins at the pin headers. On the bottom of the socket boards, capacitors as well as an external oscillator are placed, which need to be close to the devices pins. A top view of the sockets is shown in **Figure 8** and **Figure 9**. The socket boards can only be used, if there are no components assembled inside the socket area of the base board.

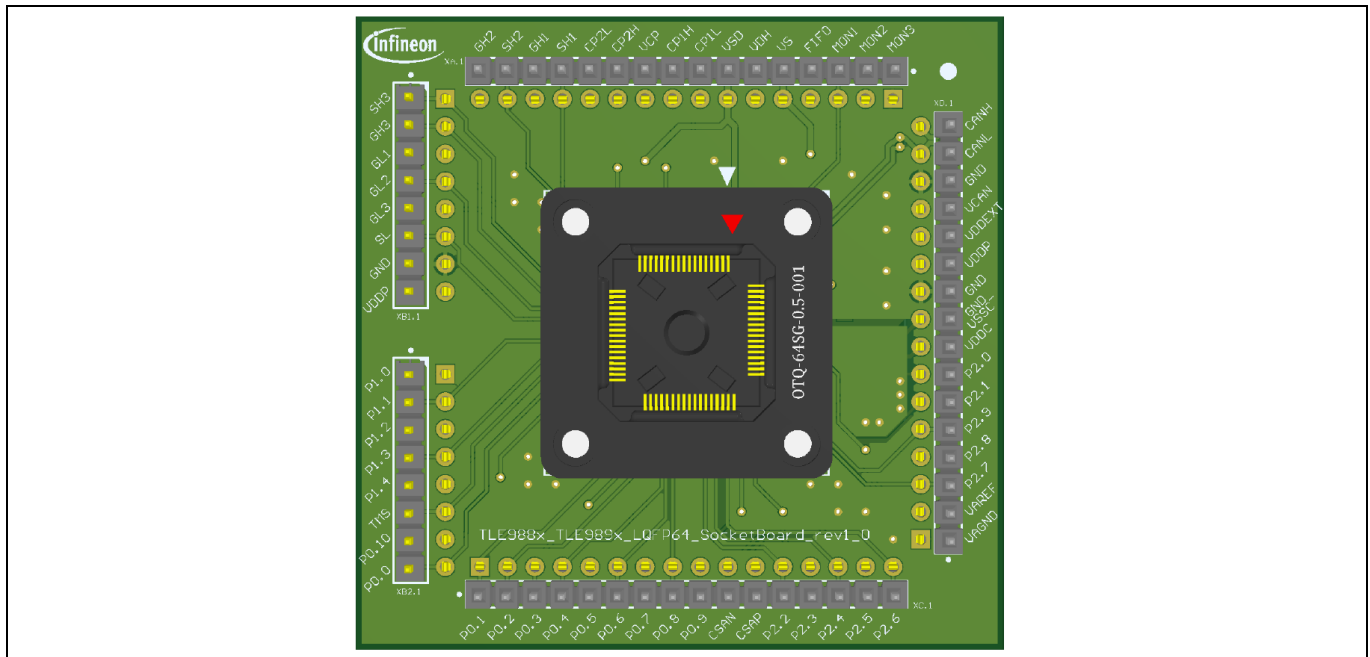


Figure 8 TLE988x\_TLE989x LQFP64 Socketboard (top view)

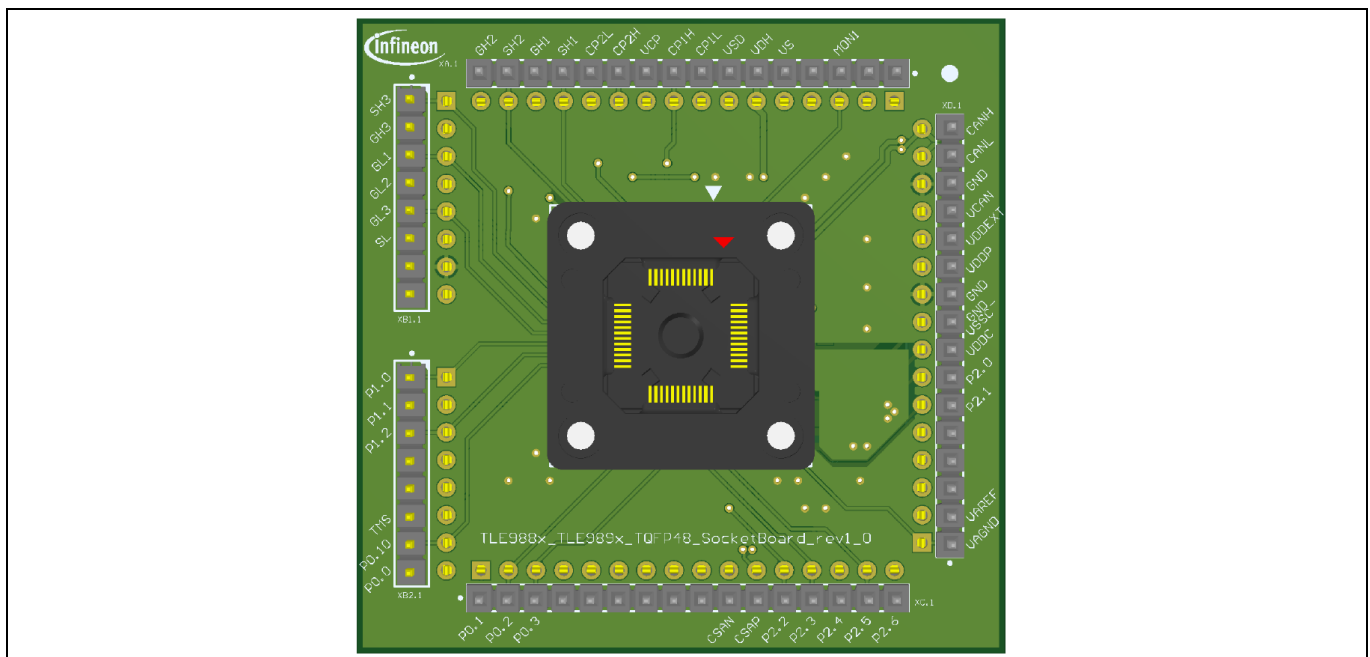
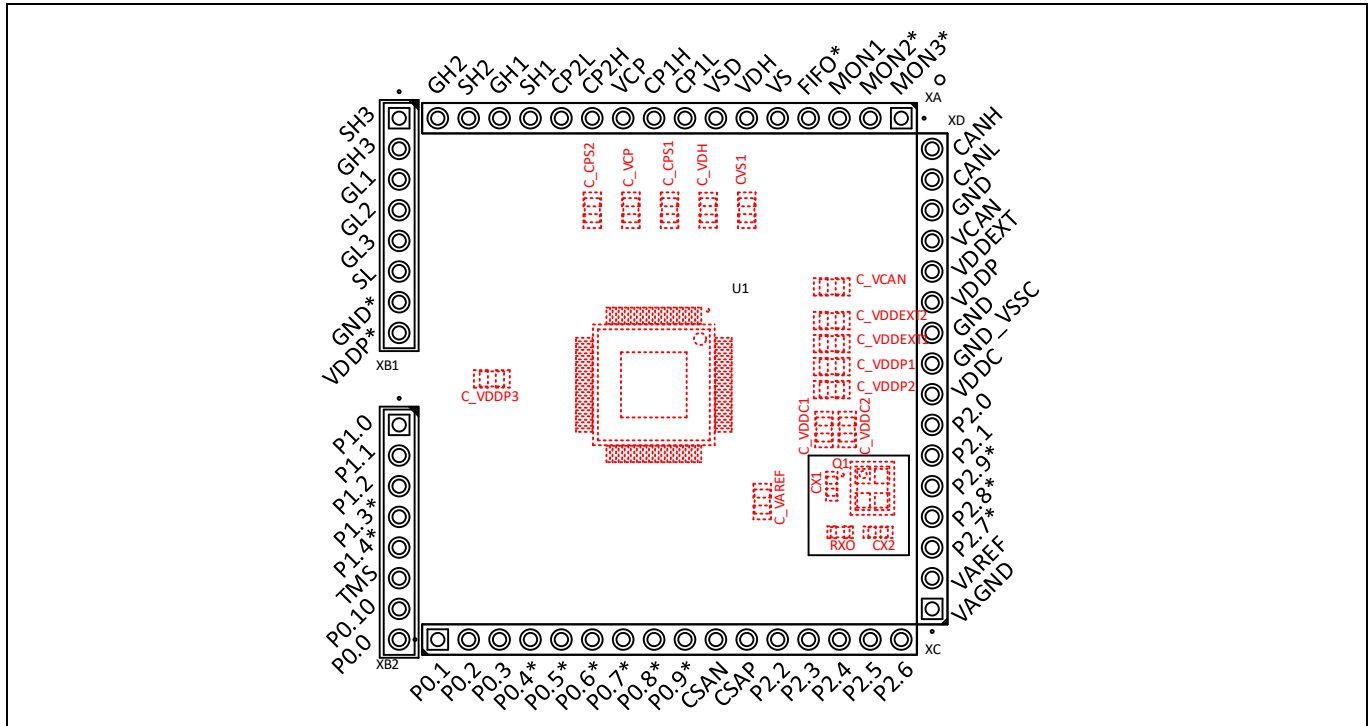


Figure 9 TLE988x\_TLE989x TQFP48 Socketboard (top view)

**System and functional description**

For the LQFP64 package there is the option to solder the device directly onto the base board. If the device is placed, all passive components inside the socket area and the external oscillator need to be placed as well. If components are assembled inside the socket area on the base board, no socket board can be used. Details are shown in **Figure 10**. A list of all assembly options is given in **Table 8**.



**Figure 10 Placement option for LQFP64 device**

Please note that if a socket board is used, the current for the charge pump capacitor is drawn over VSD. However, if a device is soldered directly onto the TLE989x EvalBoard with TQFP/LQFP spring socket, the current for the charge pump capacitor is drawn directly from the board supply. This means that depending on whether a socket board is used or not, the VSD current measurement at ILoadVSD jumper will be different. For details on the circuit refer to **Figure 27** for the schematics of the placement option of the device, to **Figure 36** for the schematics of LQFP64 Socketboard or to **Figure 39** for the schematics of TQFP48 Socketboard.

**2.2.2 Motor Power Stage**

Three MOSFET half bridges are placed on the board to drive a motor. Every half bridge consists of two N-channel MOSFETS (QHSx, QLSx) with according gate resistor (RGHSx, RGLSx), gate-source resistor (RGSHSx, RGSLSx) and gate-source capacitor (CGSHSx, CGSLsX). At VDH# for each motor phase a decoupling capacitor (CDCAx) is placed as well as a DC link capacitor (CDCBx).

In addition, there are placement options for snubbers (RSBHSx + CSBHSx, RSBLsX + CSBLsX), as well as for gate-drain capacitors (CGDHSx, CGDLSx). These components are not populated by default. Details are shown in **Figure 11**.

System and functional description

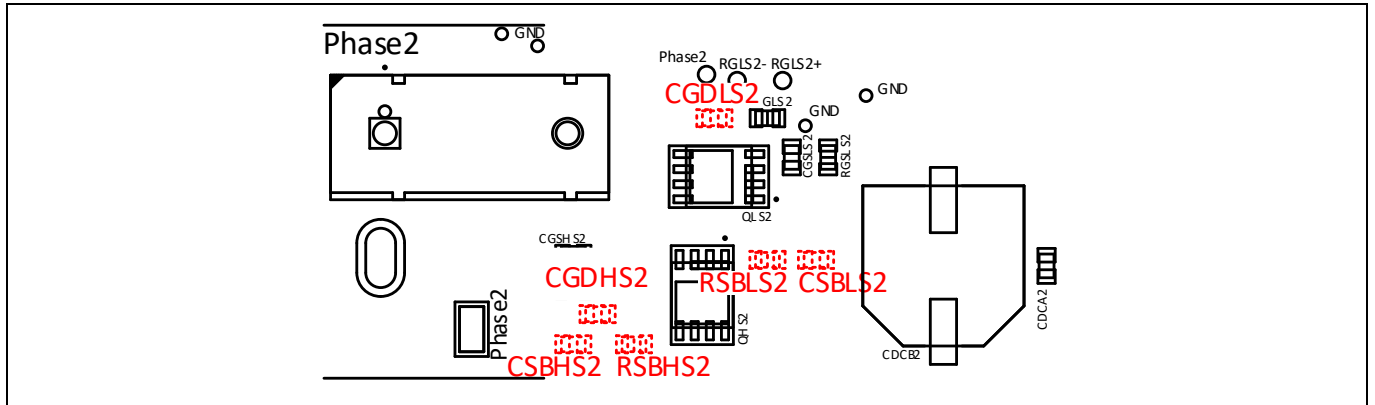


Figure 11 Placement options for MOSFET half bridges (half bridge 2)

To connect motor phases, either the banana plugs can be used or cables can be soldered directly to the pads next to the banana plugs. If the current consumption of the motor is higher than the maximum current capability of the banana plugs, the pads should be used. A description and manufacturer number of the banana plugs used for the board can be found in the BOM in chapter 5.1.

2.2.3 CAN

The CANH and CANL pins of the device can be connected in four different ways: via the CAN D-SUB interface, the CAN\_BSL interface, the CANH/L terminal block or pin header X1. The pinout for the CAN D-SUB interface is depicted in the figure below.

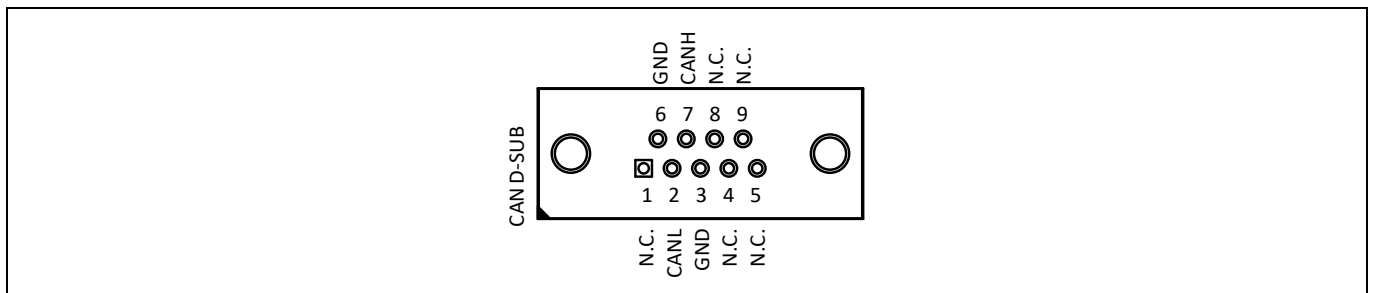


Figure 12 Pinout of CAN D-SUB interface

The CAN\_BSL interface is a 16-pin header (2 x 8) with 2.54 mm pitch and can be used to program the device via CAN with the Infineon uIO stick (see [www.infineon.com/uio](http://www.infineon.com/uio) or [www.hitex.com/uio](http://www.hitex.com/uio)). The pinout for the CAN\_BSL interface is depicted in the figure below.

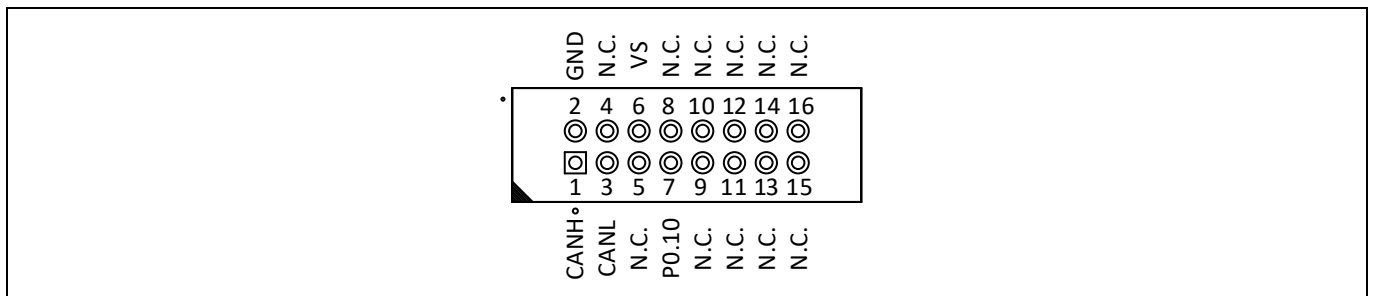
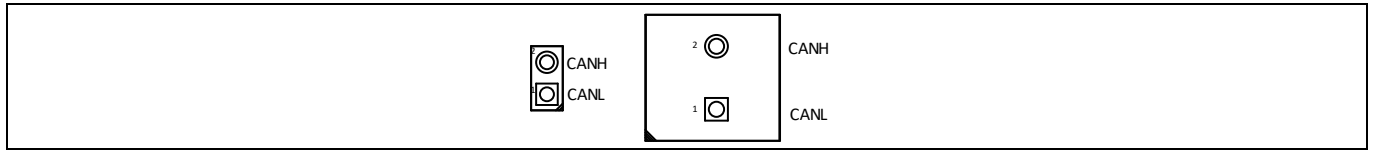


Figure 13 Pinout of CAN\_BSL interface



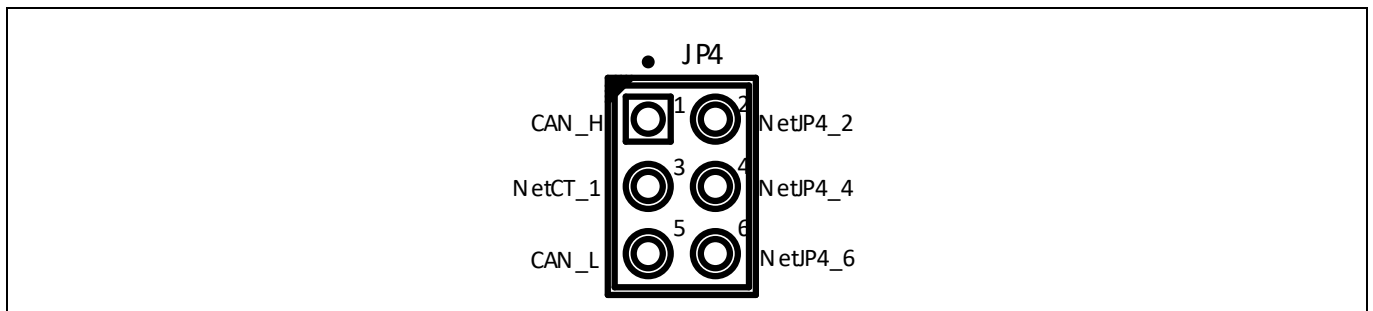
**System and functional description**

The CANH/L terminal block can be used to connect CANH and CANL cables with clamps. If jumper cables are used, they can also be connected directly to pin header X1. The pinout for X1 and the CANH/L terminal block is depicted in the figure **below**.



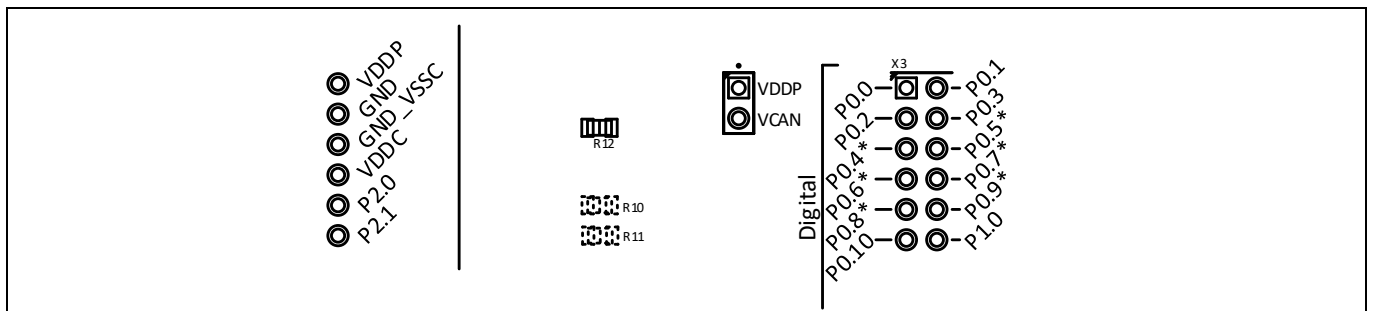
**Figure 14 Pinout of X1 (left) and CANH/L terminal block (right)**

An option is available to add CAN termination resistors RT1 and RT2 with jumper JP4, which add up to 124 Ω in series. Additionally, a capacitor can be connected between the resistors. The pinout of JP4 is depicted in the figure **below**. For more details on the circuit, refer to the schematics in **Figure 30**.



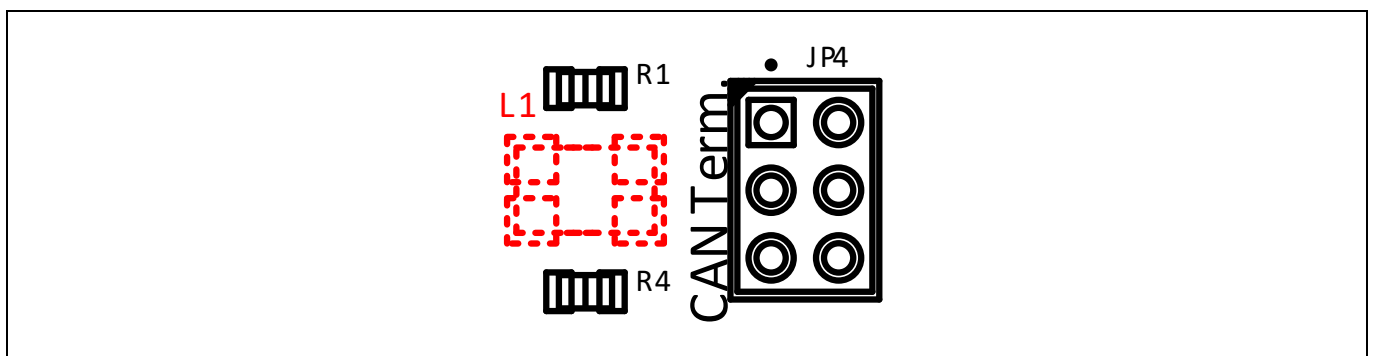
**Figure 15 Pinout of JP4**

By default, VCAN is supplied by VDDP. Refer to setting of JP2 in **Table 6**. In case there is noise coupling from CAN to VDDP, a ferrite bead can be placed instead of 0R resistor R12. Details are shown in the figure **below**.



**Figure 16 VCAN supply**

A placement option is available to solder a common mode choke L1. If L1 is placed, the 0Ω resistors R1 and R4 need to be removed. Details are shown in **Figure 17**.



System and functional description

Figure 17 Placement option for common mode choke

2.2.4 Potentiometer

A potentiometer is available on the board, which can either be supplied by VDDEXT or VDDP of the device. Set jumper JP5 accordingly. By setting JP6, either P2.5 or P2.6 can be selected as analog input of the device for the potentiometer signal. The pinouts of JP5 and JP6 are depicted in the figure below.

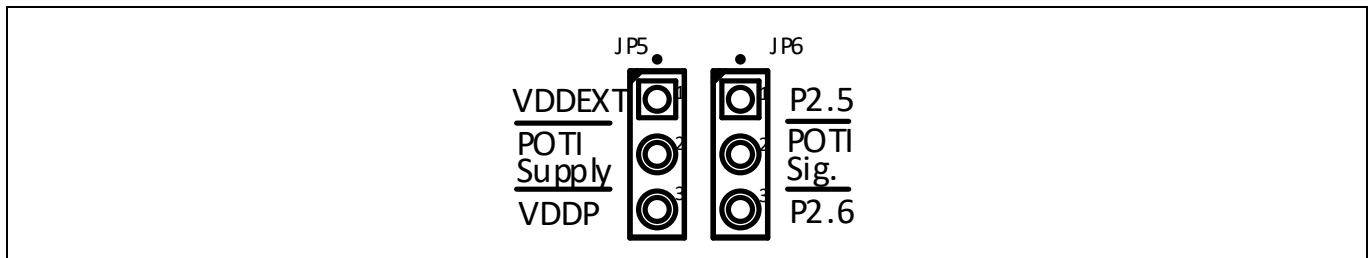


Figure 18 Pinout of JP5 (left) and JP6 (right)

2.2.5 Current Sense Amplifier (CSA)

Between the SL pin of the device and ground a single shunt resistor RS1 is placed on the board to measure the motor current consumption via CSAN and CSAP pins of the device. For high precision purposes such as applications with current commutation, there is the option to place a precision resistor RS2 by Isabellenhütte instead. If RS1 is placed, RS2, R2 and R3 need to be removed. Details are shown in Figure 19.

If motor currents are applied which exceed the maximum ratings given in the Technical data, maximum current ratings of the shunt resistor being used need to be considered.

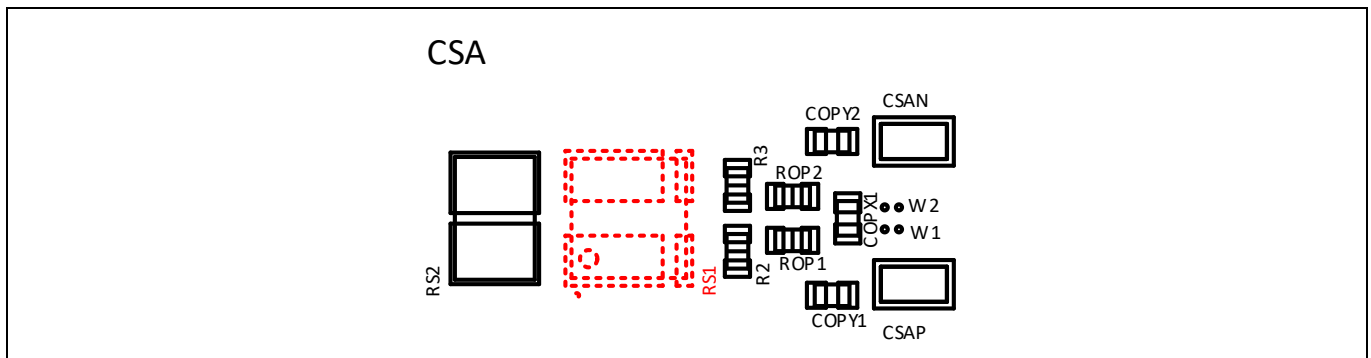


Figure 19 Placement option for shunt resistor

2.2.6 High voltage, digital and analog Inputs/ Outputs

All high voltage, digital and analog pins of the device are available on pin headers X2 and X3 for measurement or connection with jumper cables. The pin headers have a standard pitch of 2.54mm and are placed close to the edge of the Evalboard, so it is possible to connect a breadboard for prototyping. Pin labels marked with \* are only available in 64 pin variant of the device. The analog inputs are grouped in such way that sensors can be easily connected and supplied via VDDEXT. The pinouts of X2 and X3 are depicted in the figure below.

System and functional description

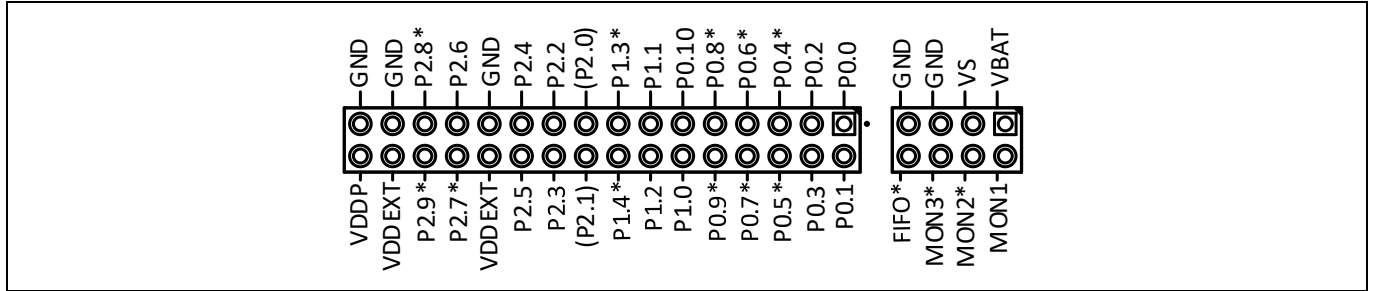


Figure 20 Pinout of X2 (left) and X3 (right)

Pin P2.0 and P2.1 are not connected to the device by default. To connect them a placement option for 0Ω resistors R10 and R11 is available. Details are shown in **Figure 21**.

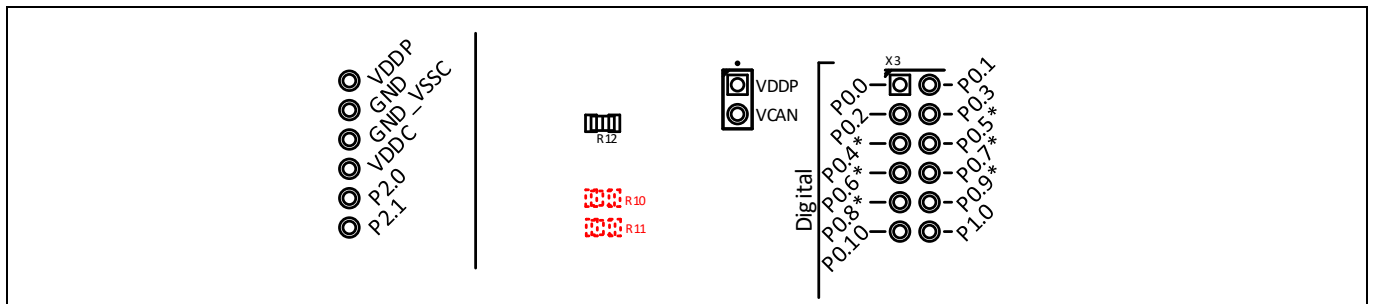


Figure 21 Placement option for R10 and R11

System and functional description

2.2.7 Debugging

On the board a SEGGER J-Link debugger is available for debugging, which can be connected via an USB cable. Alternatively, an off-board debugger like the ARM®KEIL ULINK2 or the XMC™ Link can be used via the SWD interface.

To use the SEGGER J-Link on-board debugger the jumpers on JP9 must be set. The pinout of JP9 is depicted in the figure **below**. In case the virtual COM port is not used, it is recommended to disconnect P1.2. If a serial console of the PC opens a virtual COM port, the on-board debugger drives P1.2 high and this pin cannot be driven low by any other device.

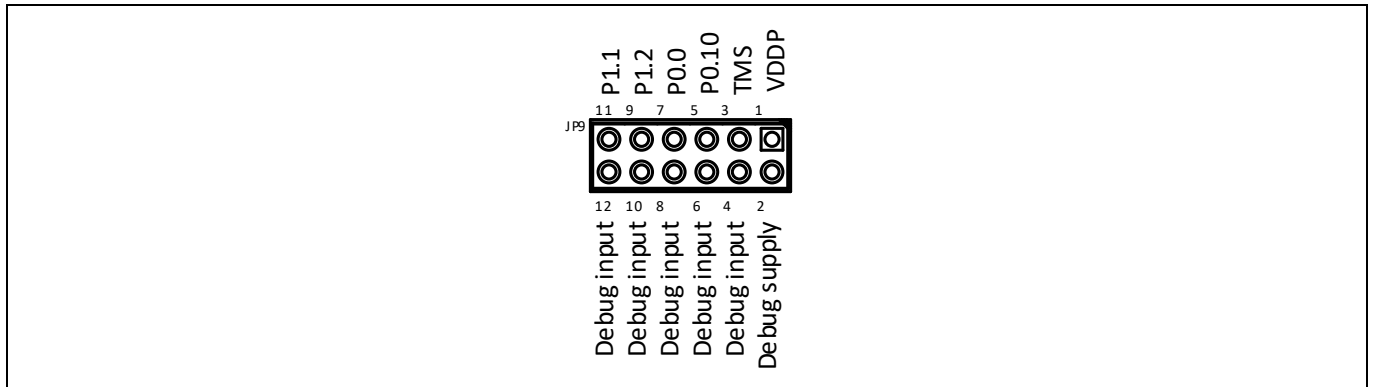


Figure 22 Pinout of JP9

If the on-board debugger is not available or cannot be used, an off-board debugger like the ARM®KEIL ULINK2 or an XMC™ Link can be connected via the SWD interface X8 which consists of a 10-pin header (2 x 5) with 1.27 mm pitch. The pinout of the SWD interface is depicted in the figure **below**.

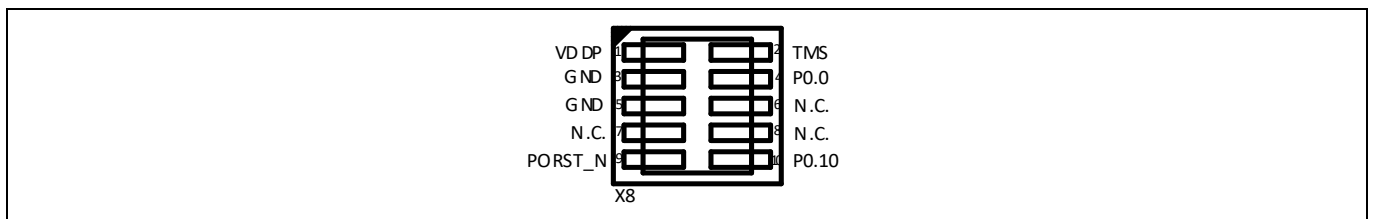


Figure 23 Pinout of SWD interface X8

Assembly Options

### 3 Assembly Options

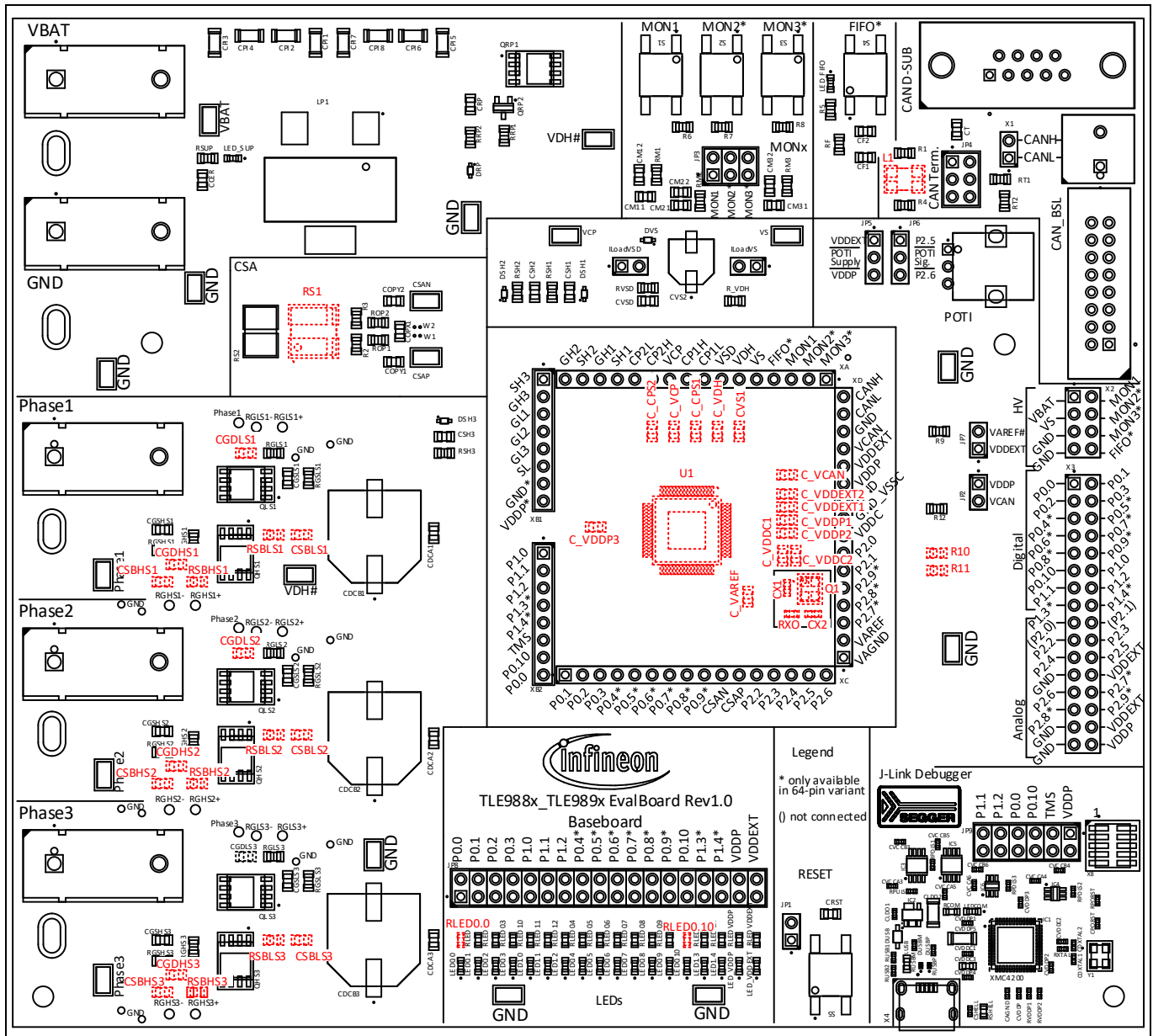


Figure 24 Additional placements' positions

Values for these optional additional placements have to be determined depending on application. Recommended values can be found in the BOM in chapter 5.1.

Table 8 Additional placements

| Component | Description   |
|-----------|---|
| U1        | MOTIX™ MCU TLE988x/TLE989x 64 pin variant. Needs to be assembled, if no socketboard is used |
| V_CP      | Charge pump capacitor. Needs to be assembled, if no socketboard is used                     |
| V_CPS1    | Charge pump capacitor stage 1. Needs to be assembled, if no socketboard is used             |
| V_CPS2    | Charge pump capacitor stage 2. Needs to be assembled, if no socketboard is used             |



**Assembly Options**

| <b>Component</b> | <b>Description</b>  |
|------------------|---|
| C_VDH            | VDH decoupling capacitor. Needs to be assembled, if no socketboard is used      |
| CVS1             | VS decoupling capacitor. Needs to be assembled, if no socketboard is used       |
| Q1               | External oscillator. Needs to be assembled, if no socketboard is used           |
| RX02             | Oscillator resistor. Needs to be assembled, if no socketboard is used           |
| CX1              | Oscillator capacitor 1. Needs to be assembled, if no socketboard is used        |
| CX2              | Oscillator capacitor 2. Needs to be assembled, if no socketboard is used        |
| C_VAREF          | VAREF stability capacitor. Needs to be assembled, if no socketboard is used     |
| C_VDDC1          | VDDC decoupling capacitor. Needs to be assembled, if no socketboard is used     |
| C_VDDC2          | VDDC decoupling capacitor. Needs to be assembled, if no socketboard is used     |
| C_VDDP1          | VDDP decoupling capacitor. Needs to be assembled, if no socketboard is used     |
| C_VDDP2          | VDDP stability capacitor. Needs to be assembled, if no socketboard is used      |
| C_VDDP3          | VDDP stability capacitor. Needs to be assembled, if no socketboard is used      |
| C_VDDEXT1        | VDDEXT decoupling capacitor 1. Needs to be assembled, if no socketboard is used |
| C_VDDEXT2        | VDDEXT stability capacitor 2. Needs to be assembled, if no socketboard is used  |
| C_VCAN           | CAN decoupling capacitor. Needs to be assembled, if no socketboard is used      |
| L1               | CAN common mode choke   |
| RS1              | Precision resistor by Isabellenhütte  |
| RSBHS1           | Resistance snubber high-side MOSFET phase 1                                     |
| CSBHS1           | Capacitor snubber high-side MOSFET phase 1                                      |
| CGDHS1           | Gate-drain capacitor high-side MOSFET phase 1                                   |
| RSBLS1           | Resistance snubber low-side MOSFET phase 1                                      |
| CSBLS1           | Capacitor snubber low-side MOSFET phase 1                                       |
| CGDLS1           | Gate-drain capacitor low-side MOSFET phase 1                                    |
| RSBHS2           | Resistance snubber high-side MOSFET phase 2                                     |
| CSBHS2           | Capacitor snubber high-side MOSFET phase 2                                      |
| CGDHS2           | Gate-drain capacitor high-side MOSFET phase 2                                   |
| RSBLS2           | Resistance snubber low-side MOSFET phase 2                                      |
| CSBLS2           | Capacitor snubber low-side MOSFET phase 2                                       |
| CGDLS2           | Gate-drain capacitor low-side MOSFET phase2                                     |
| RSBHS3           | Resistance snubber high-side MOSFET phase 3                                     |
| CSBHS3           | Capacitor snubber high-side MOSFET phase 3                                      |
| CGDHS3           | Gate drain capacitor high-side MOSFET phase 3                                   |
| RSBLS3           | Resistance snubber low-side MOSFET phase 3                                      |
| CSBLS3           | Capacitor snubber low-side MOSFET phase 3                                       |
| CGDLS3           | Gate-drain capacitor low-side MOSFET phase 3                                    |
| R10              | 0Ω resistor to connect P2.0 to X3   |
| R11              | 0Ω resistor to connect P2.1 to X3   |
| RLED0.0          | Resistor to connect LED0.0 to JP8   |
| RLED0.10         | Resistor to connect LED0.10 to JP8  |

## Software toolchain

### 4 Software toolchain

The Software toolchain can be installed following the explanation below or goto [www.infineon.com/tle987x](http://www.infineon.com/tle987x) and search for Tools & Software.

#### 4.1 Keil $\mu$ Vision 5

The recommended Integrated Software Development Environment is Keil<sup>®</sup>  $\mu$ Vision5<sup>®</sup>.

Infineon's MOTIX<sup>™</sup> MCU family is supported. For more information about the installation process, go to [www.keil.com](http://www.keil.com).

#### 4.2 Infineon Config Wizard

In addition to the IDE, Infineon provides a solution to speed-up the IC programming, the Config Wizard. This tool is designed for code configuration in combination with the IDE. Infineon "Config Wizard for MOTIX<sup>™</sup> MCU" can be downloaded via the Infineon Toolbox. The Infineon Toolbox is a central place to download and update all your Infineon tools. It can be downloaded from [www.infineon.com/toolbox](http://www.infineon.com/toolbox).

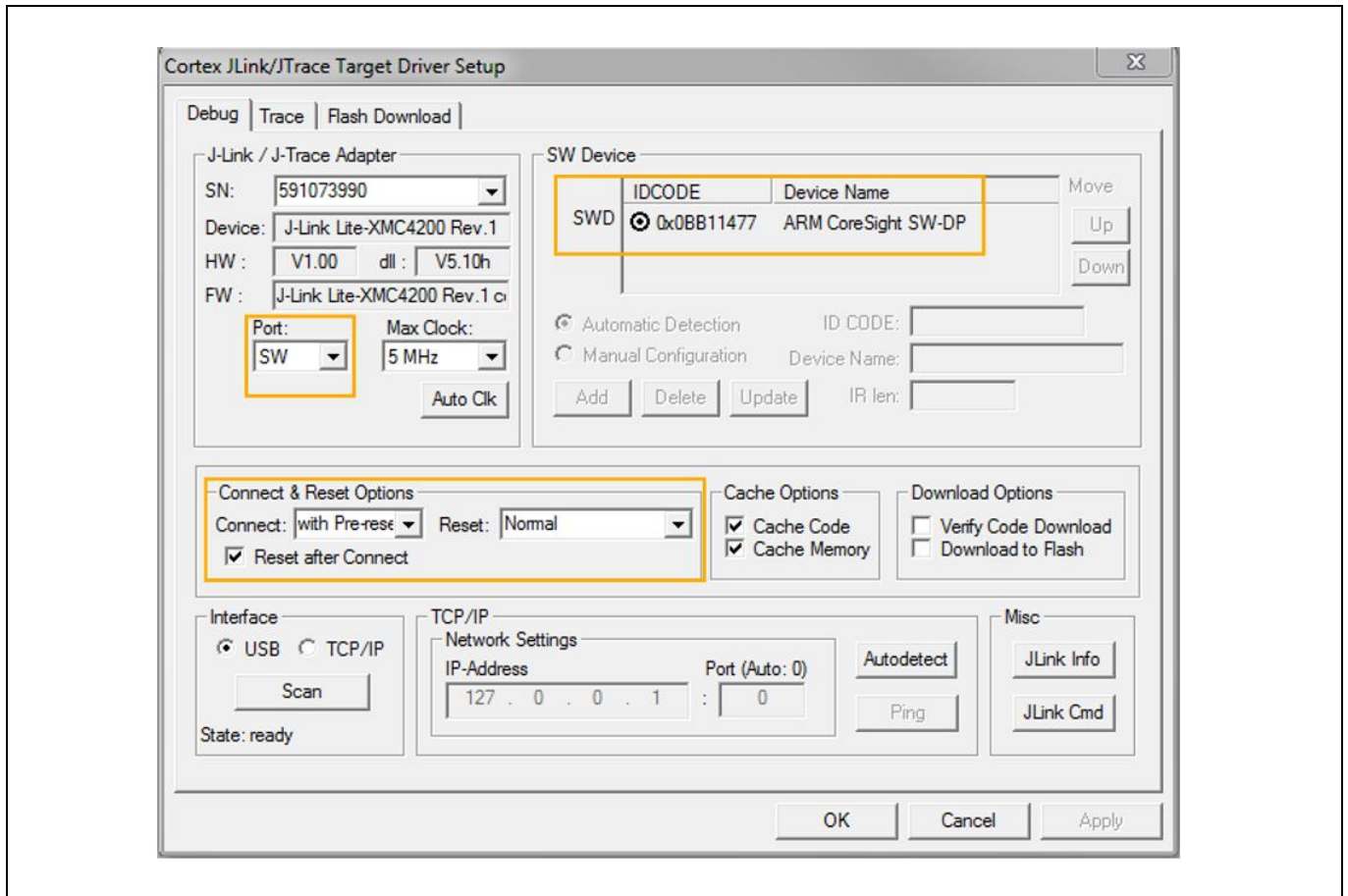
#### 4.3 TLE988x\_9x SDK

All MOTIX<sup>™</sup> MCU products can be installed to Keil<sup>®</sup>  $\mu$ Vision5<sup>®</sup> via "Pack Installer". Browsing to the Infineon chapter in "All Devices" will lead to the "TLE98xx Series". The ".pack" file comes with startup files, functions to access the registers of the device, and several code examples to provide an easy start up and speed up software development.

#### 4.4 Debug connection setup

For a proper Flash and Debug Connection, install V5.10 (or newer) from: [www.segger.com/jlink-software.html](http://www.segger.com/jlink-software.html). Keil<sup>®</sup>  $\mu$ Vision5<sup>®</sup> has to be configured in the IDE Menu "Options for Target". After connecting the USB-cable and power up the EvalBoard, go to the "Debug" register-card, choose "J-LINK / J-TRACE Cortex" and press "Settings".

Software toolchain



**Figure 25** Debug and flash configuration

If the board is connected successfully, the Arm® IDCODE will be visible in the SW Device Window. If connection fails, “Connect & Reset Options” and “Port” window has to be checked.

Design Files

## 5 Design Files

### 5.1 BOM of the TLE989x EvalBoard with TQFP/LQFP spring socket

For the design of the TLE989x EvalBoard with TQFP/LQFP spring socket automotive qualified components are used. The complete BOM is shown below including non-fitted components.

| Designator  | Description   | Quantity | Manufacturer Order Number | Automotive Qualified |
|---|---|----------|---------------------------|----------------------|
| C_CPS1, C_CPS2  | High temperature multilayer ceramic chip capacitor, 0805, 220nF                   | 0        | CGA4J3X8R1H224K12 5AB     | AEC Q200             |
| C_VAREF, C_VDDC1, C_VDDEXT1, C_VDDP1, C_VDDP3, CCER, CDCA1, CDCA2, CDCA3, CRP, CVS1   | High temperature multilayer ceramic chip capacitor, 0805, 100nF                   | 5        | CGA4J2X8R1H104K12 5AA     | AEC Q200             |
| C_VCAN, C_VDDEXT2, C_VDDP2, CVSD  | Multilayer ceramic chip capacitor, 0805, 1uF                                      | 1        | CGA4J3X7R1H105K12 5AB     | AEC Q200             |
| C_VCP   | Multilayer ceramic chip capacitor, 0805, 470nF                                    | 0        | CGA4J3X7R1H474K12 5AB     | AEC Q200             |
| C_VDDC2   | TDK multilayer ceramic chip capacitor automotive grade CGA series, 0805, 330nF    | 0        | CGA4J2X7R1H334K12 5AA     | AEC Q200             |
| C_VDH, CF1, CM11, CM21, CM31, COPX1, COPY1, COPY2, CRST   | Chip Monolithic Ceramic Capacitor, 1nF, 0805                                      | 8        | GCM216R71H102KA37         | AEC Q200             |
| CAGND, CLDO1, CSHELL, CVCCA3, CVCCA4, CVCCA5, CVCCA6, CVCCB3, CVCCB4, CVCCB5, CVCCB6, CVDDC1, CVDDC2, CVDDP, CVDDP1, CVDDP2, CVDDP3, CVDDP4 | Multilayer Ceramic Chip Capacitor, 100nF, 0402                                    | 18       | CGA2B3X7R1H104K05 0BB     | AEC Q200             |
| CAN D-SUB   | D-Sub 9 Poles, Female, Straight, with Solder Pins 2,9 and nuts                    | 1        | 09 66 111 7502            | No                   |
| CAN_BSL   | Through hole .100" Male Shrouded Box Header, 16 pin, vertical, double row         | 1        | SBH11-PBPC-D08-ST-BK      | No                   |
| CANH/L  | PCB terminal block, nominal current: 16 A, rated voltage: 400 V, 2 Positions, THT | 1        | 1792863                   | No                   |
| CDCB1, CDCB2, CDCB3   | Aluminum Electrolytic Capacitors, SMD, 680uF                                      | 3        | EEEFK1V681AQ              | AEC Q200             |
| CDXTAL1, CDXTAL2  | Chip Monolithic Ceramic Capacitor, 12pF, 0402                                     | 2        | GCM1555C1H120JA16         | AEC Q200             |

**Design Files**

| Designator  | Description   | Quantity | Manufacturer Order Number | Automotive Qualified |
|---|---|----------|---------------------------|----------------------|
| CF2, CM12, CM22, CM32, CSBHS1, CSBHS2, CSBHS3, CSBLS1, CSBLS2, CSBLS3   | High temperature multilayer ceramic chip capacitor, 0805, 10nF  | 4        | CGA4C2NP01H103J060AA      | AEC Q200             |
| CGDHS1, CGDHS2, CGDHS3, CGDLS1, CGDLS2, CGDLS3  | Capacitor, SMD, High Temperature, 0805, 33pF  | 0        | C0805C330J5HACAUTO        | AEC Q200             |
| CGSHS1, CGSHS2, CGSHS3, CGSLS1, CGSLS2, CGSLS3, CT  | High temperature multilayer ceramic chip capacitor, 0805, 4.7nF   | 7        | CGA4C2NP01H472J060AA      | AEC Q200             |
| CLDO2, CPI1, CPI2, CPI3, CPI4, CPI5, CPI6, CPI7, CPI8, CVDDP5   | CGA series multilayer ceramic chip capacitor, 1206, 10uF  | 10       | CGA5L1X7R1H106K160AC      | AEC Q200             |
| CPORST  | Temperature Stable Ceramic Capacitor, 0402, 10nF  | 1        | C0402C103K4RECAUTO        | AEC Q200             |
| CSAN, CSAP, GND1, GND2, GND3, GND4, GND5, GND6, GND7, GND8, Phase_TP1, Phase_TP2, Phase_TP3, VBAT1, VCP, VDH1, VDH2, VS | Test Point, Compact, Surface Mount, Finish- Silver Plate, SMD   | 18       | 5019                      | No                   |
| CSH1, CSH2, CSH3  | Chip Monolithic Ceramic Capacitor, 0805, 470pF  | 3        | GCM2165C1H471JA16         | AEC Q200             |
| CVDDC3  | Chip Monolithic Ceramic Capacitor, 0603, 4.7uF  | 1        | GRM188R61E475KE11D        | No                   |
| CVS2  | Aluminum Electrolytic Capacitor, SMD, 22uF  | 1        | EEE-HC1V220P              | AEC Q200             |
| CX1, CX2  | Multilayer ceramic chip capacitor, 0603, 10pF   | 0        | CGA3E2C0G1H100D080AA      | AEC Q200             |
| DRP, DSH1, DSH2, DSH3, DVS  | Silicon Schottky Diode, SC-79   | 5        | BAS52-02V                 | AEC Q101             |
| DUSB  | Silicon Schottky Diode, SOD323  | 1        | BAT60A                    | AEC Q101             |
| DUSBM, DUSBP  | Bi-directional TVS Protection Device, 5.5V, 3.5pF   | 2        | ESD231-B1-W0201           | No                   |
| GND   | Banana Socket, Black, 15.3mm Pitch  | 1        | 571-0100                  | No                   |
| IC1   | Infineon XMC4200 with ARM Cortex-M4 Core, VQFN-48   | 1        | XMC4200Q48K256ABXUMA1     | No                   |
| IC2   | Fixed Linear Voltage Post Regulator, 3.3V   | 1        | TLS202B1MBV33             | Yes                  |
| IC3, IC5  | Dual-Bit, Dual-Supply Voltage Bus Transceiver with Configurable Voltage Translation and 3-State Outputs | 2        | SN74LVC2T45DCTT           | No                   |



**Design Files**

| Designator  | Description  | Quantity | Manufacturer Order Number    | Automotive Qualified |
|---|--|----------|------------------------------|----------------------|
| IC4, IC6  | Single-bit noninverting bus transceiver  | 2        | SN74LVC1T45DCKR              | No                   |
| ILoadVS, ILoadVSD, JP1, JP2, JP7, X1  | Through hole .025" SQ Post Header, 2.54mm pitch, 2 pin, vertical, single row                           | 6        | HTSW-102-07-L-S              | No                   |
| JP3, JP4  | Through hole .025" SQ Post Header, 2.54mm pitch, 6 pin, vertical, double row                           | 2        | TSW-103-07-L-D               | No                   |
| JP5, JP6  | Through hole .025" SQ Post Header, 2.54mm pitch, 3 pin, vertical, single row                           | 2        | HTSW-103-07-L-S              | No                   |
| JP8   | Through hole .025" SQ Post Header, 2.54mm pitch, 36 pin, vertical, double row                          | 1        | TSW-118-23-L-D               | No                   |
| JP9   | Through hole .025" SQ Post Header, 2.54mm pitch, 12 pin, vertical, double row                          | 1        | TSW-106-05-L-D               | No                   |
| Jumper1, Jumper2, Jumper3, Jumper4, Jumper5, Jumper6, Jumper7, Jumper8, Jumper9, Jumper10, Jumper11, Jumper12, Jumper13, Jumper14, Jumper15, Jumper16, Jumper17, Jumper18, Jumper19, Jumper20, Jumper21, Jumper22, Jumper23, Jumper24, Jumper25, Jumper26, Jumper27, Jumper28, Jumper29, Jumper30, Jumper31, Jumper32, Jumper33, Jumper34, Jumper35, Jumper36, Jumper37 | Jumper, 1x2-Positions, Pitch 2,54mm, black, Au, with handle  | 37       | SNT-100-BK-G-H               | No                   |
| L1  | Data and signal line common mode choke, Operating temperature -55/+125°C, tinned terminals, SMD, 100uH | 0        | B82789C0104N002              | AEC Q200             |
| LED0.0, LED0.1, LED0.10, LED0.2, LED0.3, LED0.4, LED0.5, LED0.6, LED0.7, LED0.8, LED0.9, LED1.0, LED1.1, LED1.2, LED1.3, LED1.4,  | Standard SMD LED, 0603, Red  | 19       | TLMS1100-GS08, TLMS1000-GS08 | AEC Q101             |

**Design Files**

| Designator  | Description   | Quantity | Manufacturer Order Number  | Automotive Qualified |
|---|---|----------|----------------------------|----------------------|
| LED_FIFO, LED_SUP, LEDCOM   |   |          |                            |                      |
| LED_VDDEXT, LED_VDDP  | Standard SMD LED, 0603, Green   | 2        | TLMP1100-GS08              | AEC Q101             |
| LPI   | Inductor, IND / STD / 6.8uH / 36A / 20% / -40°C to 125°C / 4.6mR / SMD                  | 1        | XAL1510-682MED             | AEC Q200             |
| LUSB  | Chip ferrite beads BLM series, 0603, 60R  | 1        | BLM18PG600SN1D             | No                   |
| Phase1, Phase2, Phase3  | PCB Mounted Insulated Socket, Green, 50 V ac, Contact Resistance & Omega 10 mO max, THT | 3        | 571-0400                   | No                   |
| POTI  | Compact type potentiometer, THT, 10k  | 1        | RK09K1130AAU               | No                   |
| Q1  | Surface Mount Compact Crystal Unit, SMD, 16MHz  | 0        | NX3225GA-16.000M-STD-CRG-2 | AEC Q200             |
| QHS1, QHS2, QHS3, QLS1, QLS2, QLS3, QRP1  | OptiMOS-5 N-Channel Enhancement Mode - Normal Level Power Transistor                    | 7        | IPC70N04S5-4R6             | AEC Q101             |
| QRP2  | NPN general-purpose transistor  | 1        | BC817K-40R                 | AEC Q101             |
| R1, R2, R3, R4, R10, R11, R12   | Standard Thick Film Chip Resistor, 0805, 0R   | 5        | CRCW08050000Z0             | AEC Q200             |
| R5, R6, R7, R8, RRP2  | Standard Thick Film Chip Resistor, 0805, 10k  | 5        | CRCW080510K0FK             | AEC Q200             |
| R9  | Standard Thick Film Chip Resistor, 0805, 200R   | 1        | CRCW0805200RFK             | AEC Q200             |
| R_VDH, RF, RM1, RM2, RM3  | Standard Thick Film Chip Resistor, 0805, 1k   | 5        | CRCW08051K00FK             | AEC Q200             |
| RCOM  | Automotive Grade Thick Film Chip Resistor, 0603, 680R                                   | 1        | AC0603FR-07680RL           | AEC Q200             |
| RGHS1, RGHS2, RGHS3, RGLS1, RGLS2, RGLS3  | Standard Thick Film Chip Resistor, 0805, 2R   | 6        | CRCW08052R00FKEA HP        | AEC Q200             |
| RGSHS1, RGSHS2, RGSHS3, RGSL1, RGSL2, RGSL3   | Standard Thick Film Chip Resistor, 0805, 100k   | 6        | CRCW0805100KFK             | AEC Q200             |
| RLED0.0, RLED0.1, RLED0.10, RLED0.2, RLED0.3, RLED0.4, RLED0.5, RLED0.6, RLED0.7, RLED0.8, RLED0.9, RLED1.0, RLED1.1, RLED1.2, RLED1.3, RLED1.4, RLEDVDDEXT, RLEDVDDP | Standard Thick Film Chip Resistor, 0603, 1.5k   | 16       | CRCW06031K50FK             | AEC Q200             |

**Design Files**

| Designator   | Description   | Quantity | Manufacturer Order Number | Automotive Qualified |
|--|---|----------|---------------------------|----------------------|
| ROP1, ROP2   | Standard Thick Film Chip Resistor, 0805, 12R  | 2        | CRCW080512R0FK            | AEC Q200             |
| RPDLS1, RPDLS2, RPDLS3, RPORST, RUSB2                | Standard Thick Film Chip Resistor, 0402, 10k  | 5        | CRCW040210K0FK            | AEC Q200             |
| RPULS, RUSB1, RVDDP1, RVDDP2                         | Standard Thick Film Chip Resistor, 0402, 4.7k                                       | 4        | CRCW04024K70FK            | AEC Q200             |
| RRP1   | Standard Thick Film Chip Resistor, 0805, 3.3k                                       | 1        | CRCW08053K30FK            | AEC Q200             |
| RS1  | Precision Resistor, BVB, size 2725, 5mR   | 0        | BVB-I-R005                | AEC Q200             |
| RS2  | Resistor, STD / 15mR / 10W / 1% / 75ppm/K / -65°C to 170°C / 2818 / SMD, 2818, 15mR | 1        | WSHP2818R0150FEA          | AEC Q200             |
| RSBHS1, RSBHS2, RSBHS3, RSBSL1, RSBSL2, RSBSL3, RVSD | Standard Thick Film Chip Resistor, 0805, 2R   | 1        | CRCW08052R00FK            | AEC Q200             |
| RSH1, RSH2, RSH3                                     | Standard Thick Film Chip Resistor, 0805, 10R  | 3        | CRCW080510R0FKEA HP       | AEC Q200             |
| RSHELL   | Standard Thick Film Chip Resistor, 0603, 1.1MEG                                     | 1        | CRCW06031M10FK            | AEC Q200             |
| RSUP   | Standard Thick Film Chip Resistor, 0805, 12k  | 1        | CRCW080512K0FK            | AEC Q200             |
| RT1, RT2   | Standard Thick Film Chip Resistor, 0805, 62R  | 2        | CRCW080562R0FK            | AEC Q200             |
| RUSBM, RUSBP   | Standard Thick Film Chip Resistor, 0402, 22R  | 2        | CRCW040222R0FK            | AEC Q200             |
| RXO  | Standard Thick Film Chip Resistor, 0603, 100R                                       | 0        | CRCW0603100RFK            | AEC Q200             |
| RXTAL  | Standard Thick Film Chip Resistor, 0402, 150R                                       | 1        | CRCW0402150RFK            | AEC Q200             |
| S1, S2, S3, S4, S5                                   | Switch, Normally open 1,3:2,4, SMD  | 5        | 430182043816              | No                   |
| U1   | MOTIX™ MCU TLE989X, LQFP-64   | 0        | TLE989X_LQFP-64           | AEC Q101ö            |
| VBAT   | Banana Socket, Red, 15.3mm Pitch  | 1        | 571-0500                  | No                   |
| X2   | Through hole .025" SQ Post Header, 2.54mm pitch, 8 pin, vertical, double row        | 1        | TSW-104-07-F-D            | No                   |
| X3   | Through hole .025" SQ Post Header, 2.54mm pitch, 32 pin, vertical, double row       | 1        | TSW-116-07-L-D            | No                   |
| X4   | Micro USB 2.0 Type B - Horizontal - SMT   | 1        | 629105150521              | No                   |
| X8   | SMT Micro Header, 1.27mm pitch, 10 pin, vertical, double row                        | 1        | FTSH-105-01-L-DV-K        | No                   |

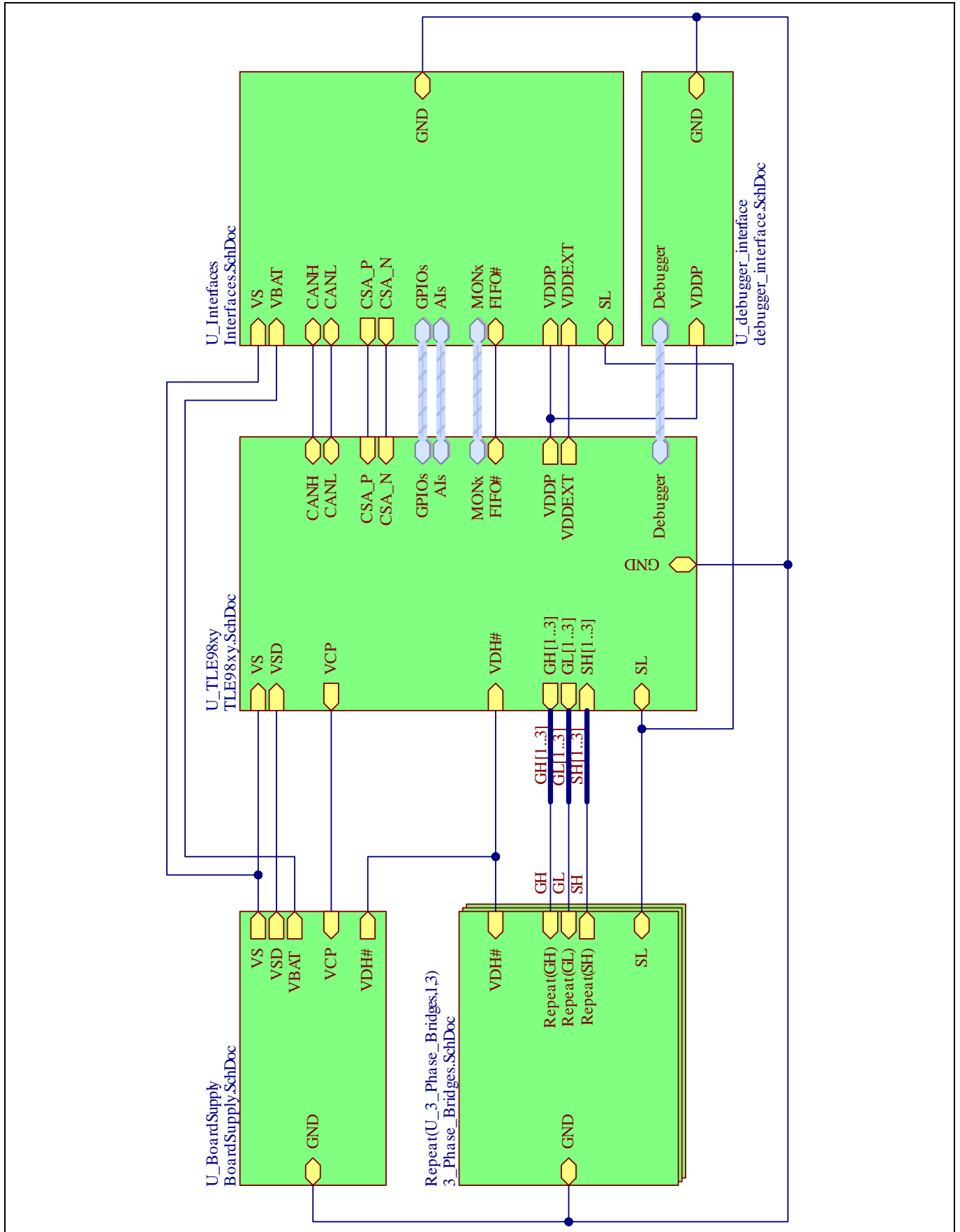
---

**Design Files**

| <b>Designator</b> | <b>Description</b>  | <b>Quantity</b> | <b>Manufacturer Order Number</b> | <b>Automotive Qualified</b> |
|-------------------|---|-----------------|----------------------------------|-----------------------------|
| XA, XC, XD        | Through hole .025" SQ Post Header, 2.54mm pitch, 16 pin, vertical, single row | 3               | TSW-116-07-L-S                   | No                          |
| XB1, XB2          | Through hole .025" SQ Post Header, 2.54mm pitch, 8 pin, vertical, single row  | 2               | TSW-108-07-L-S                   | No                          |
| Y1                | SMD Crystal, 12MHz, Temperature Range (-40°C to 125°C), SMD, 12MHz            | 1               | CX3225CA12000D0HS<br>SCC         | AEC Q200                    |

Design Files

5.2 Schematics of the TLE989x EvalBoard with TQFP/LQFP spring socket



---

## Design Files

**Figure 26** TLE989x EvalBoard with TQFP/LQFP spring socket, sheet 1,  
TLE988x\_TLE989x\_baseBoard\_v1\_1



Design Files

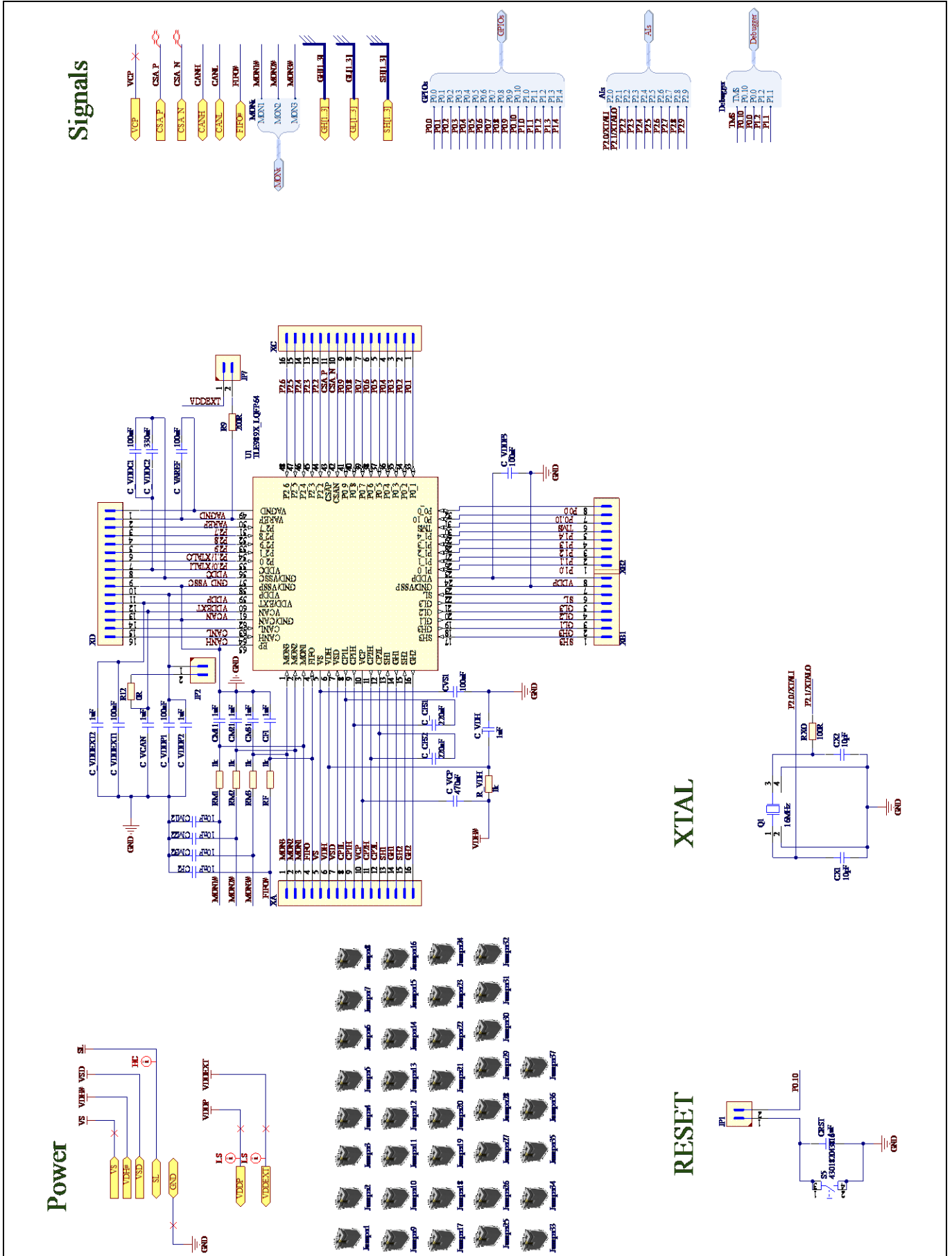


Figure 27 TLE989x EvalBoard with TQFP/LQFP spring socket, sheet 2, TLE989x

Design Files

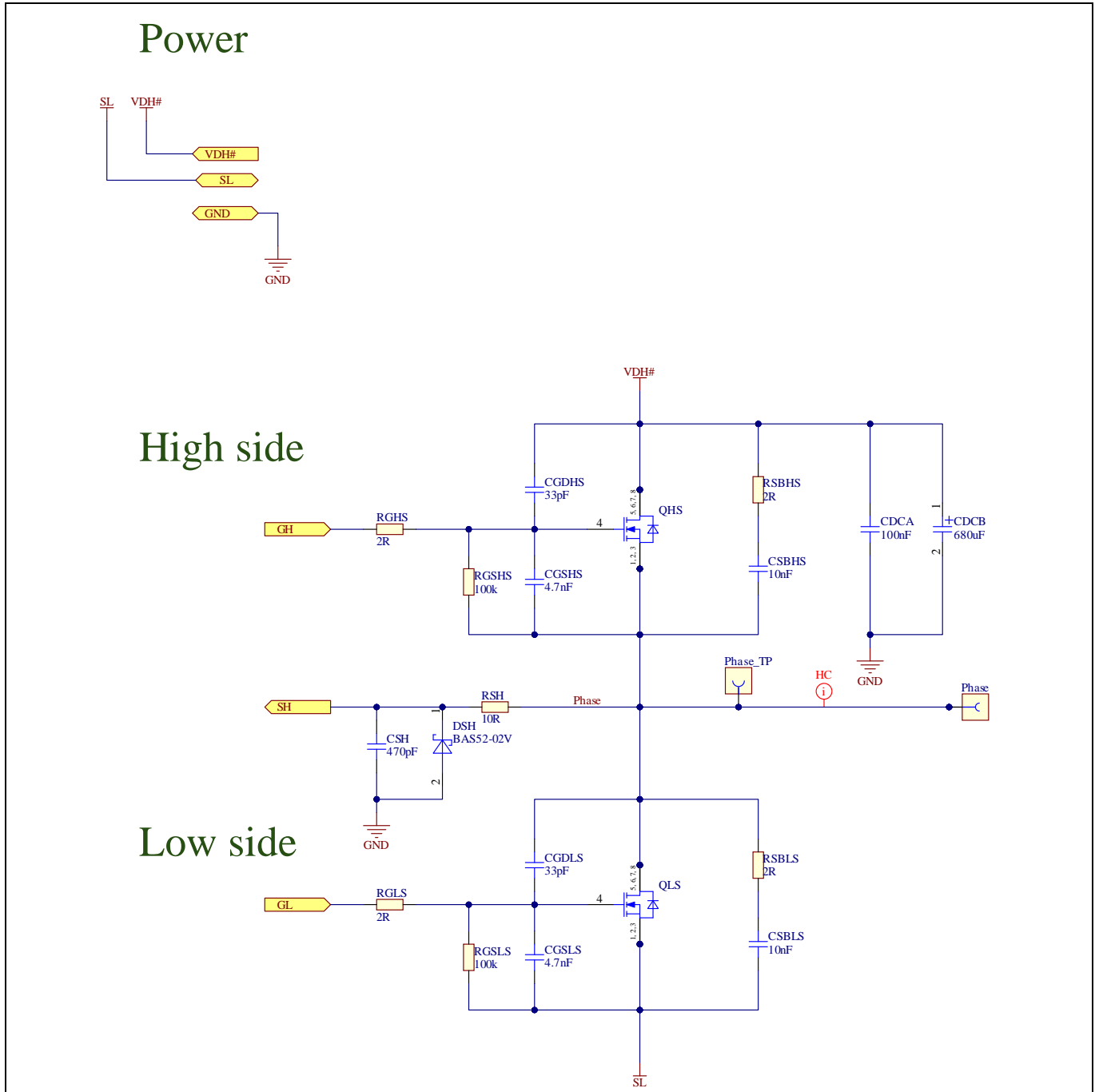


Figure 28 TLE989x EvalBoard with TQFP/LQFP spring socket, sheet 3, 3\_Phase\_Bridges

Design Files

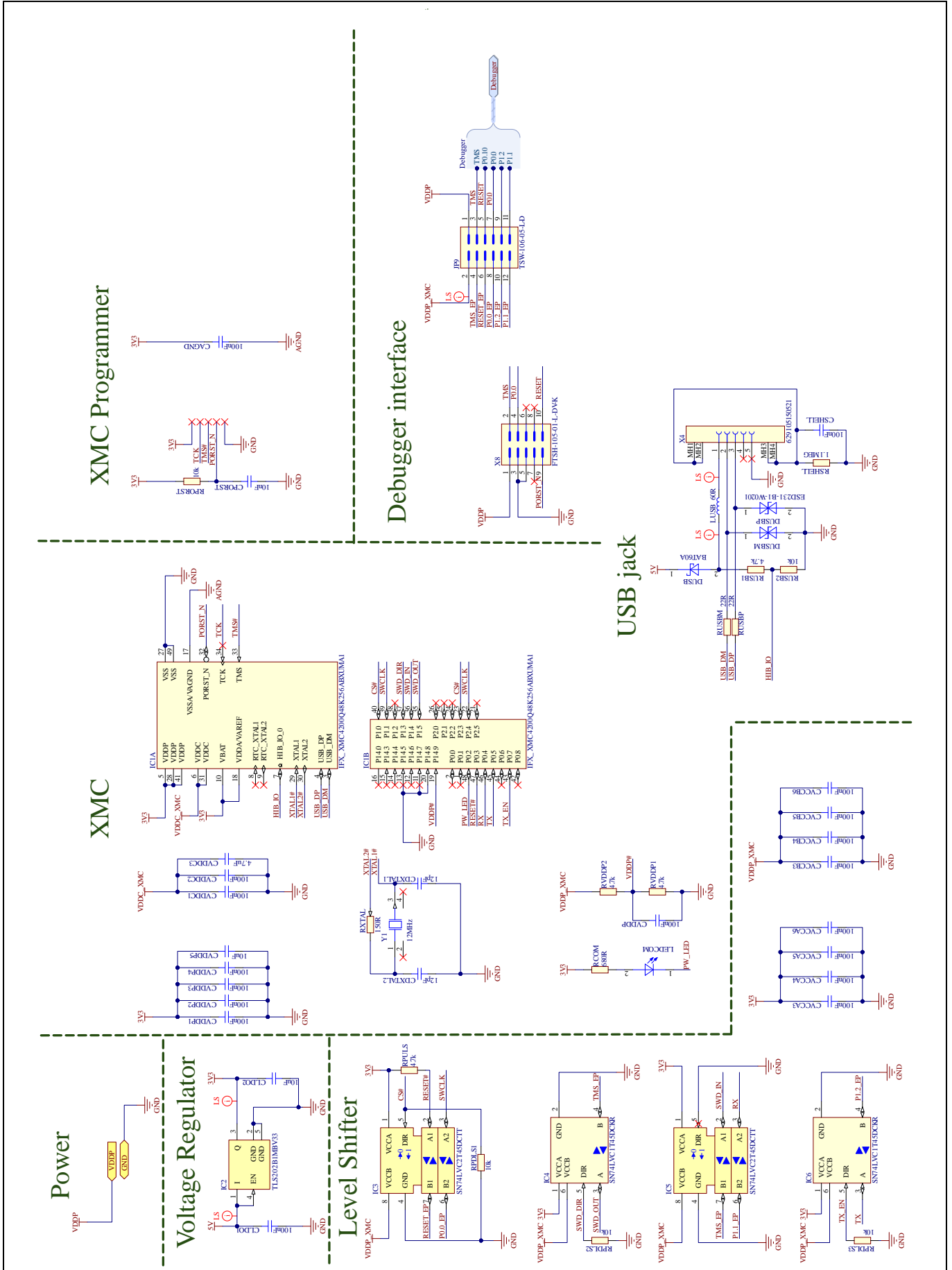


Figure 29 TLE989x EvalBoard with TQFP/LQFP spring socket, sheet 4, debugger\_interface

Design Files

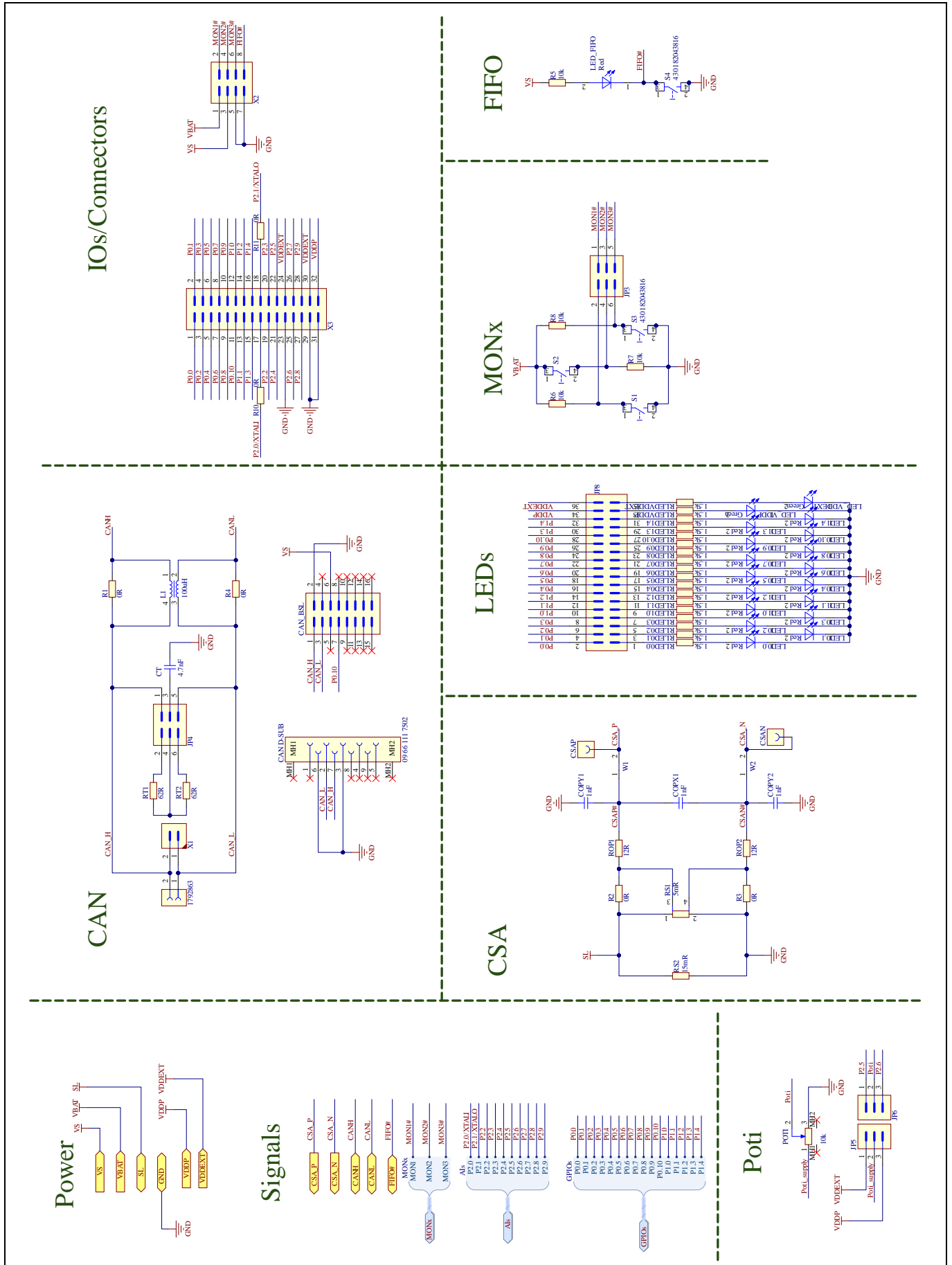


Figure 30 TLE989x EvalBoard with TQFP/LQFP spring socket, sheet 5, Interfaces

Design Files

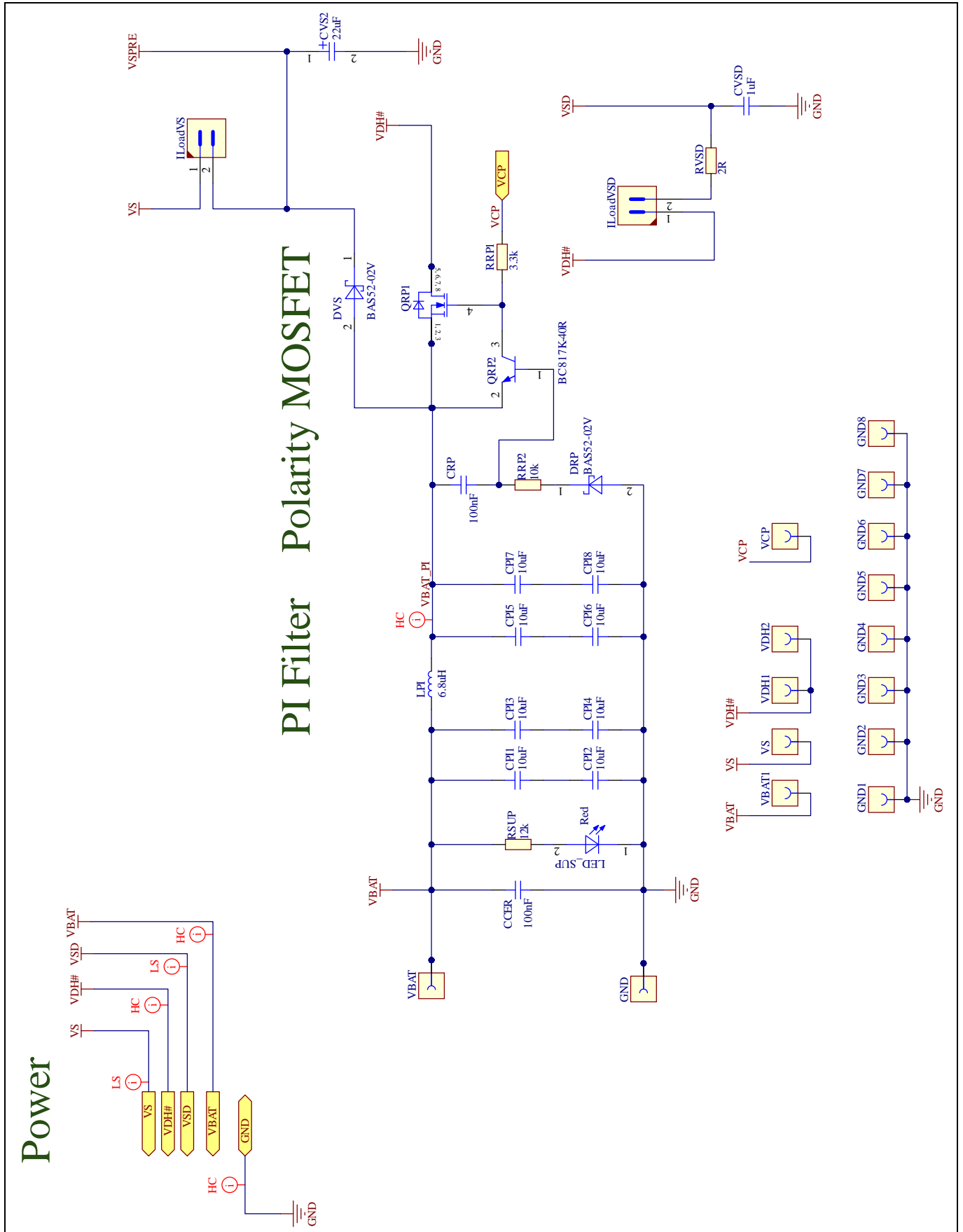


Figure 31 TLE989x EvalBoard with TQFP/LQFP spring socket, sheet 6, BoardSupply

Design Files

### 5.3 Layout of the TLE989x EvalBoard with TQFP/LQFP spring socket

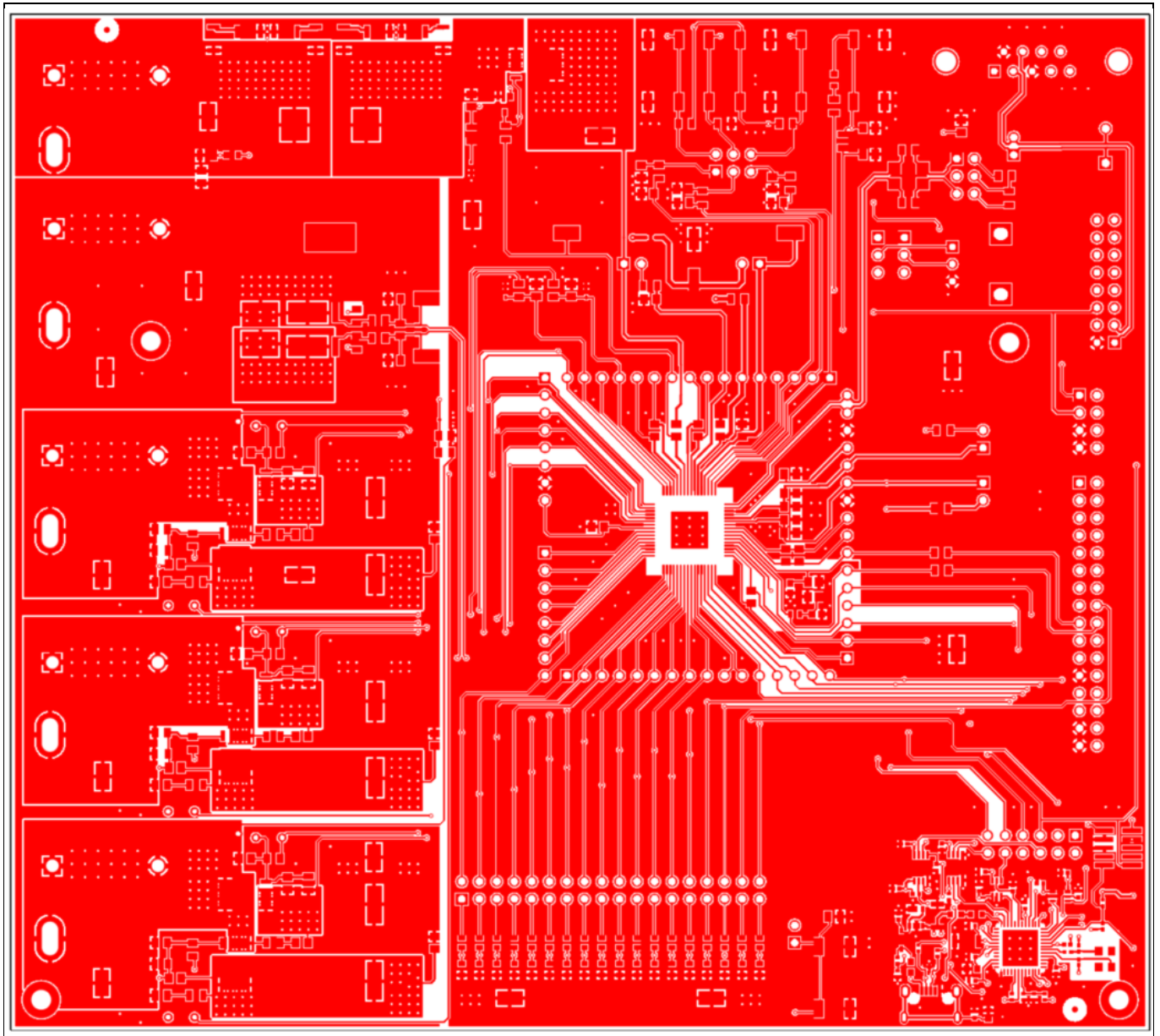


Figure 32 TLE989x EvalBoard with TQFP/LQFP spring socket, layer1 (Top layer, signal)

Design Files

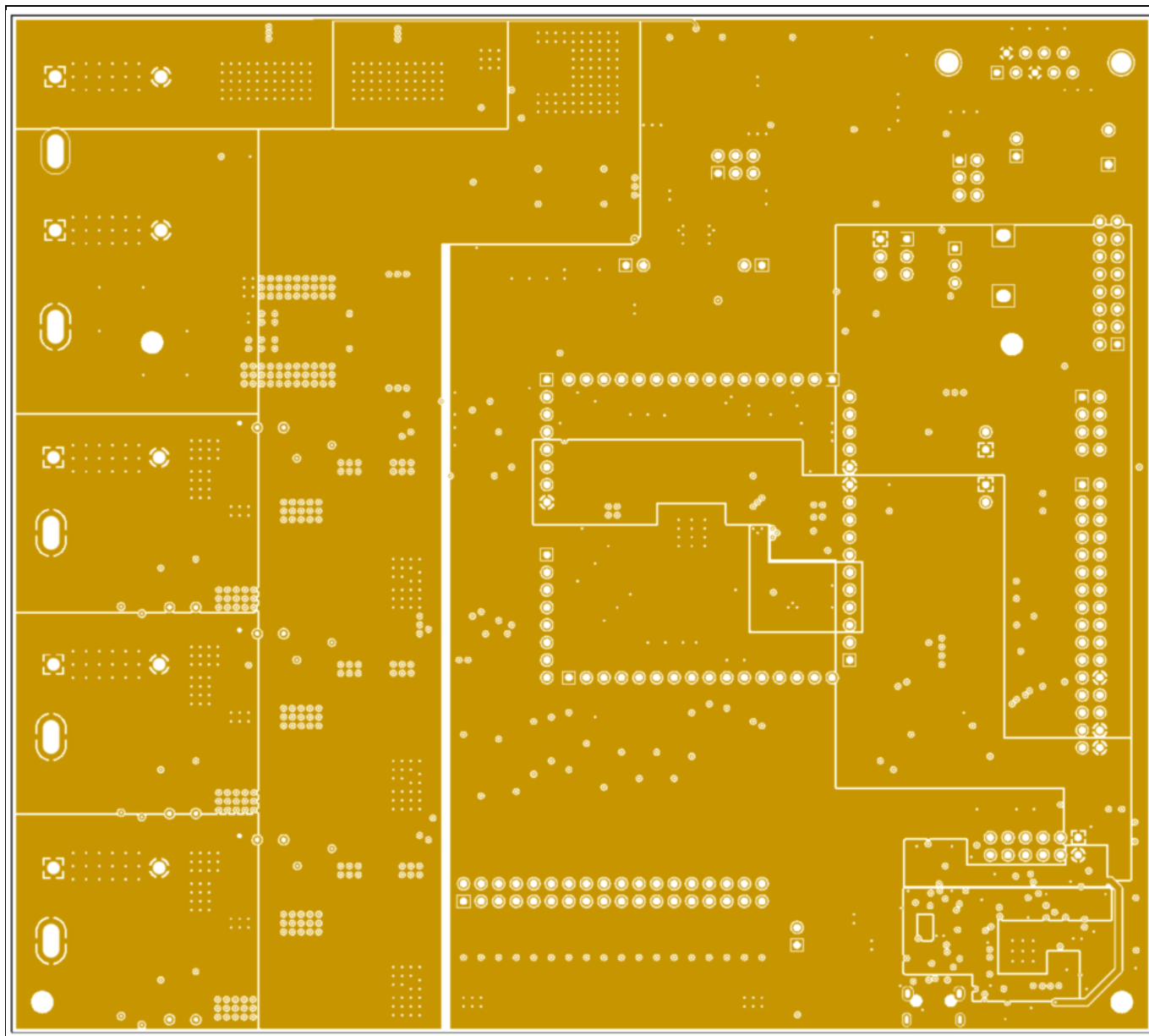


Figure 33 TLE989x EvalBoard with TQFP/LQFP spring socket, layer2 (Middle layer, power)



Design Files

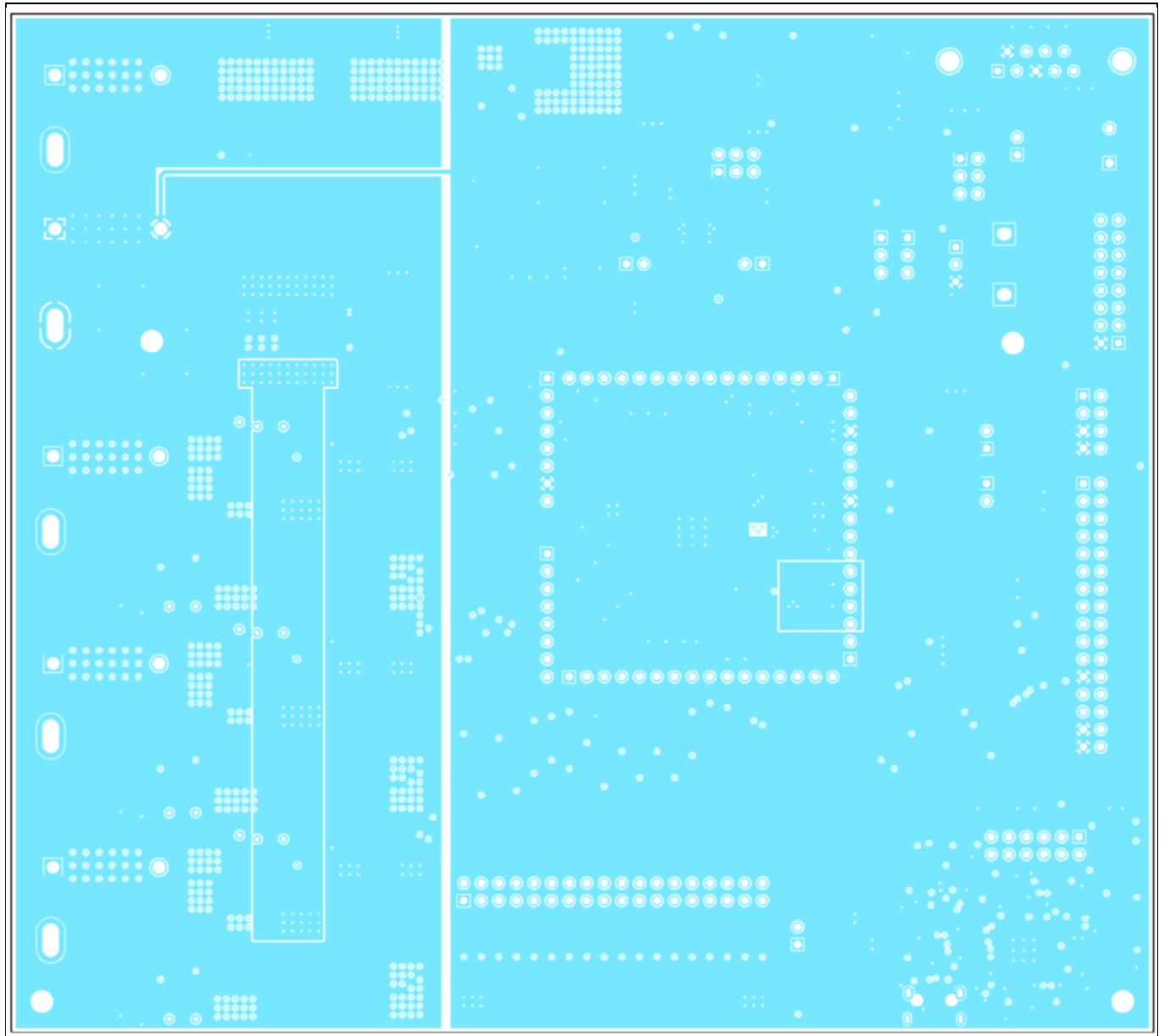


Figure 34 TLE989x EvalBoard with TQFP/LQFP spring socket, layer3 (Middle layer, GND)

Design Files

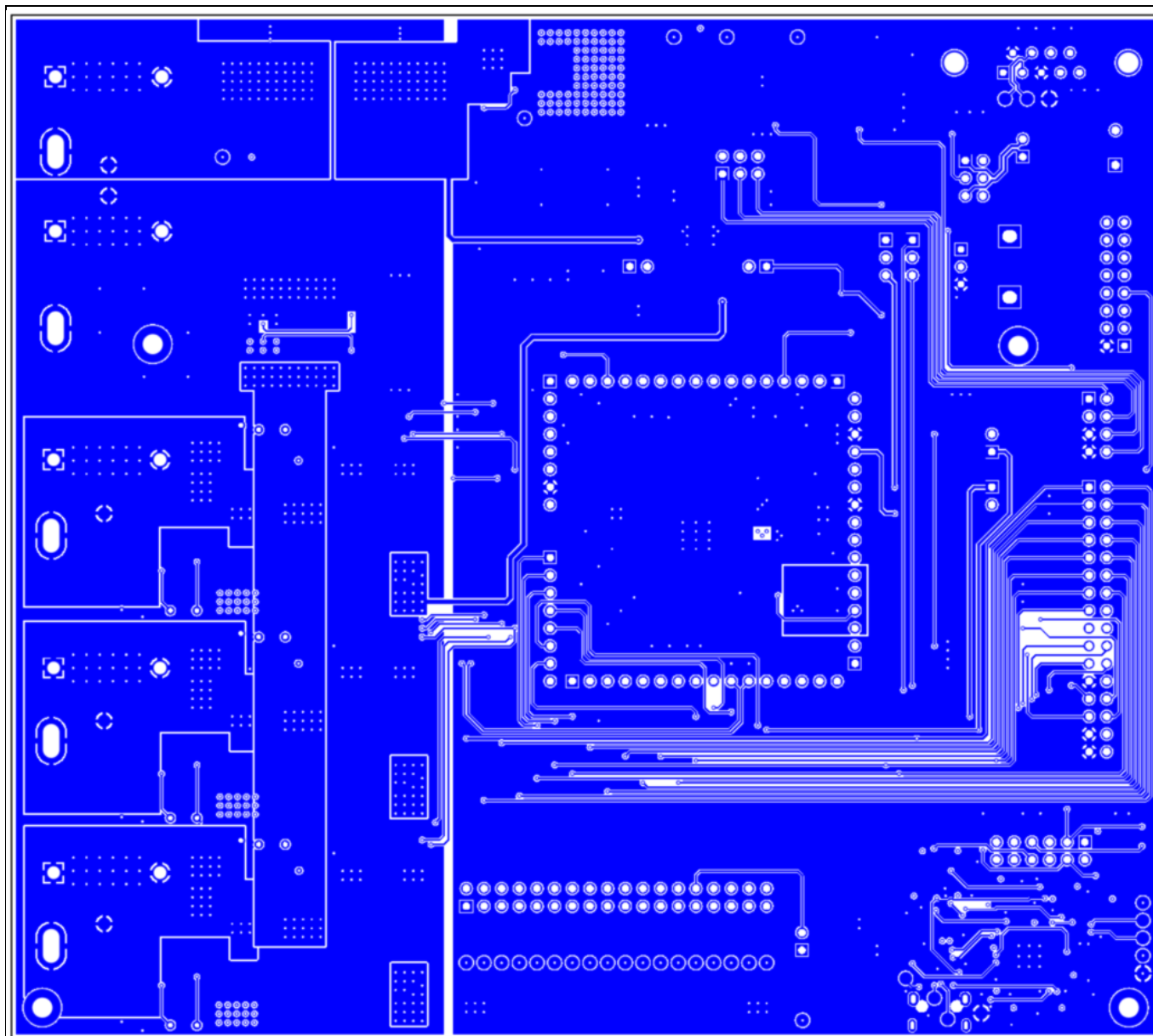


Figure 35 TLE989x EvalBoard with TQFP/LQFP spring socket, layer4 (Bottom layer, signal)

Design Files

### 5.4 Schematics of the LQFP64 Socketboard

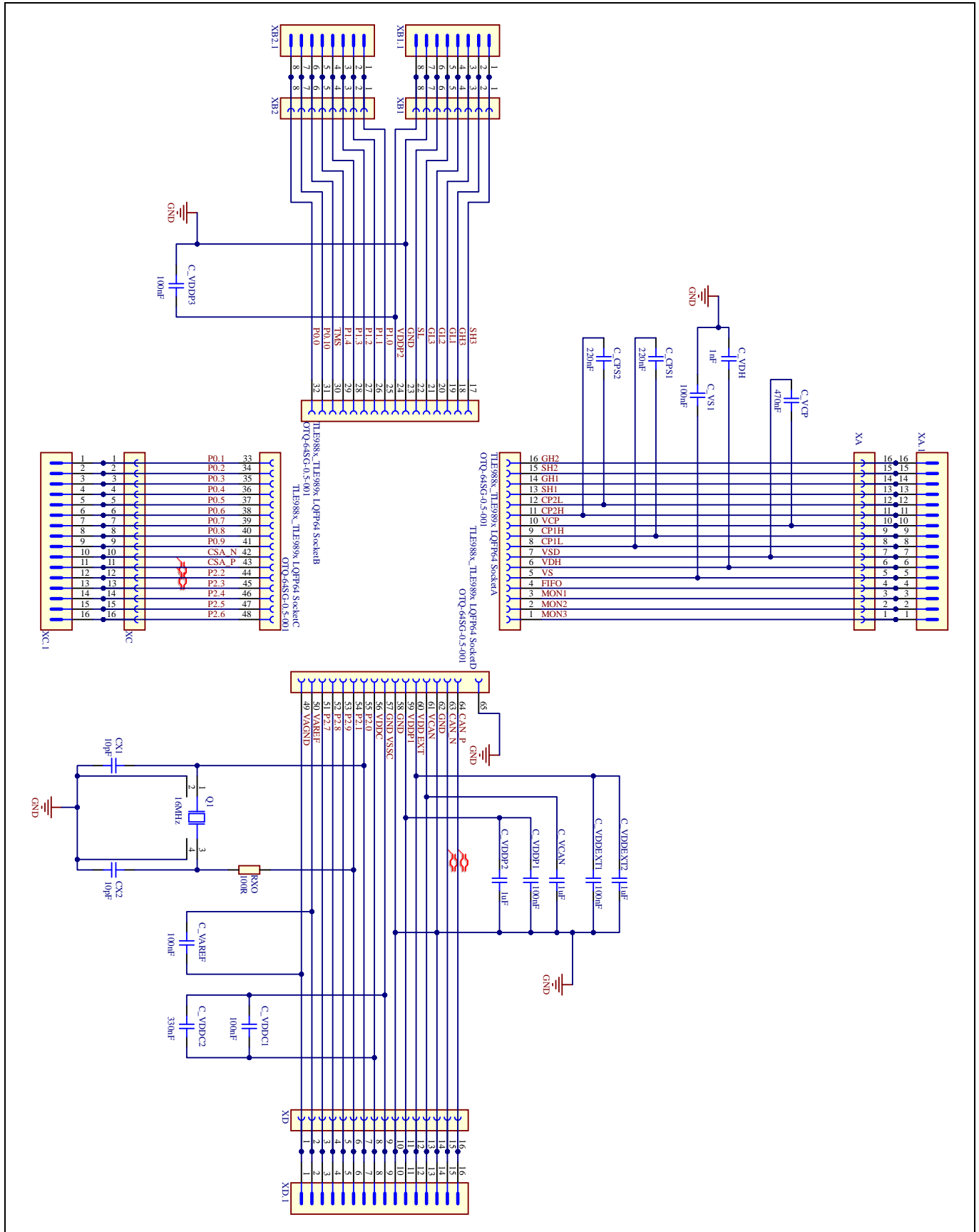


Figure 36 TLE988x\_TLE989x LQFP64 Socketboard Schematics

Design Files

### 5.5 Layout of the LQFP64 Socketboard

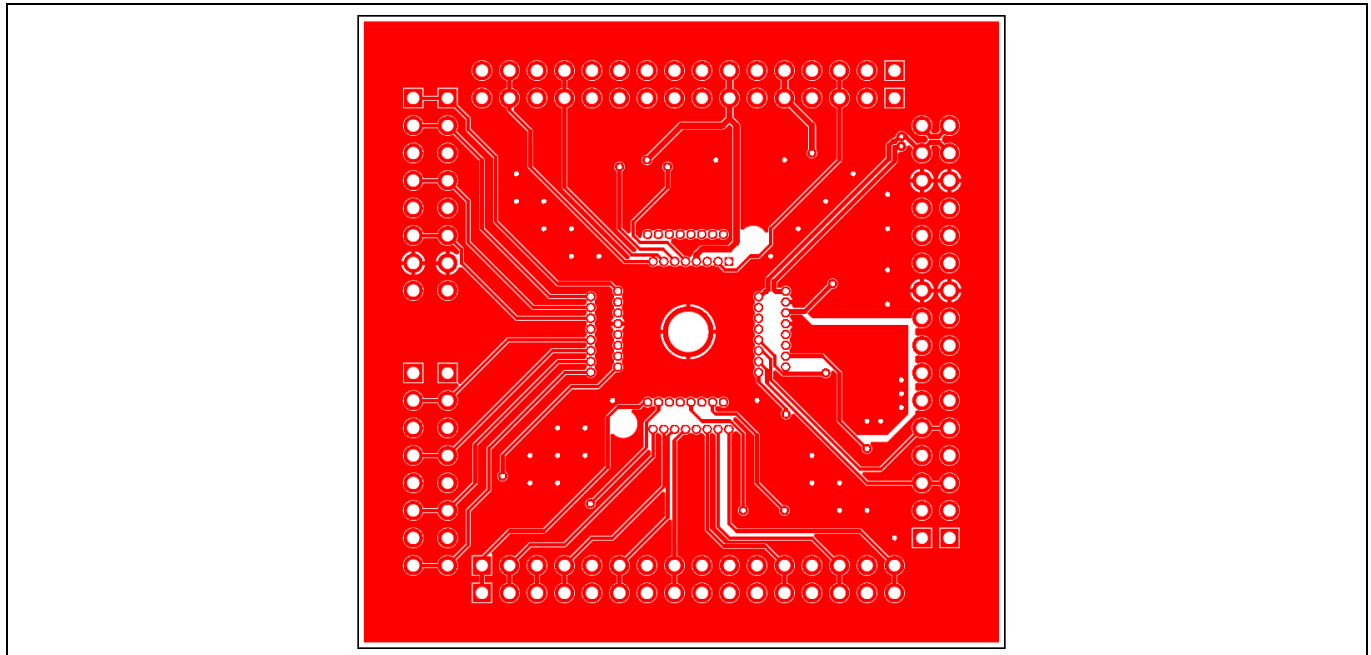


Figure 37 TLE988x\_TLE989x LQFP64 Socketboard, Top layer

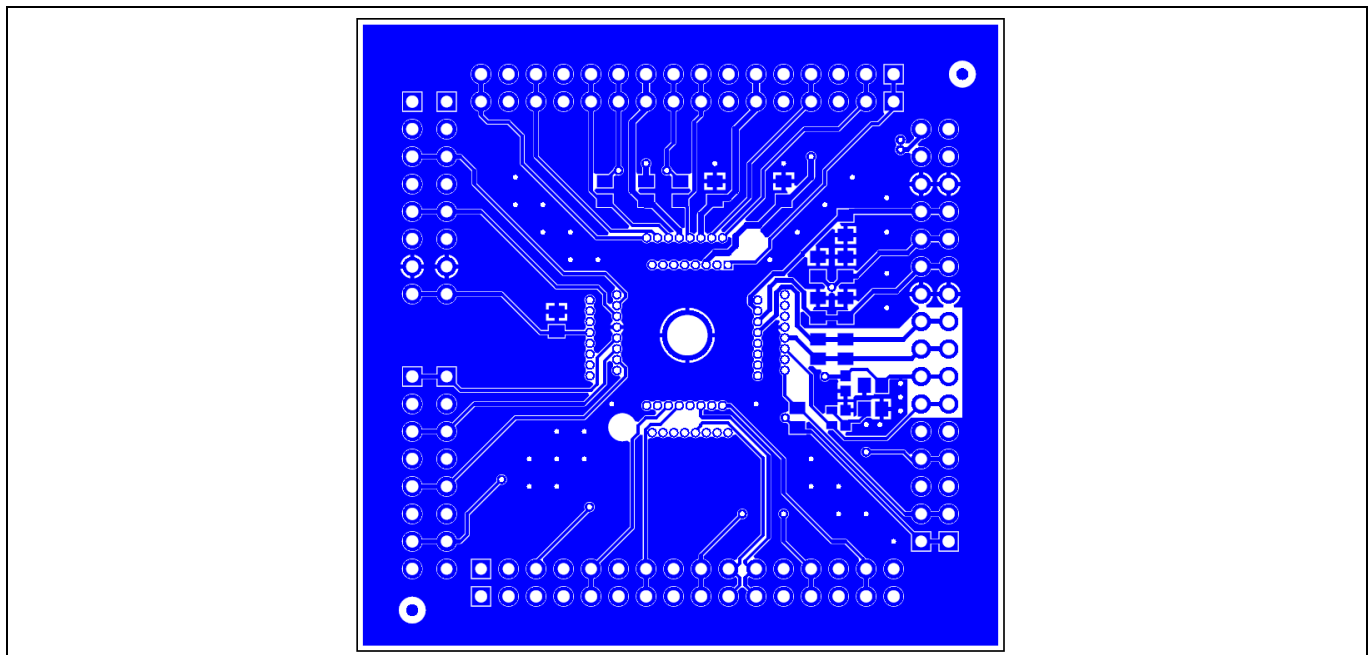


Figure 38 TLE988x\_TLE989x LQFP64 Socketboard, Bottom layer



Design Files

### 5.7 Layout of the TQFP48 Socketboard

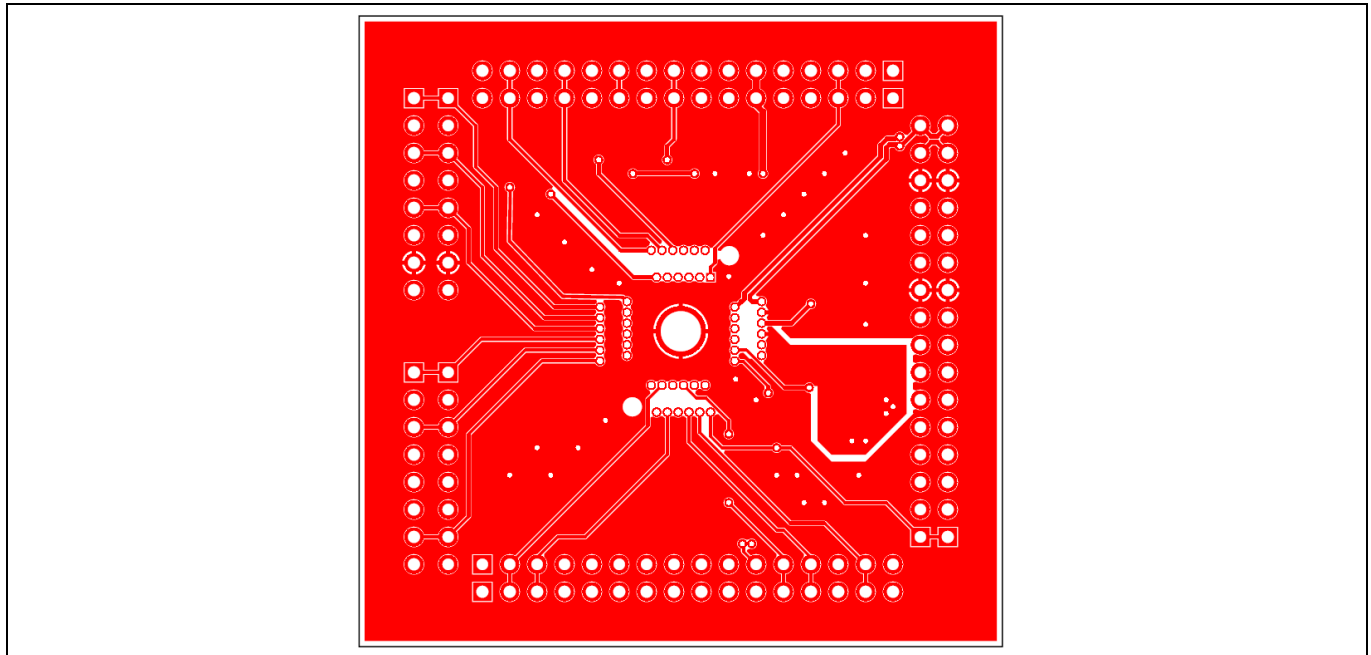


Figure 40 TLE988x\_TLE989x TQFP48 Socketboard, Top layer

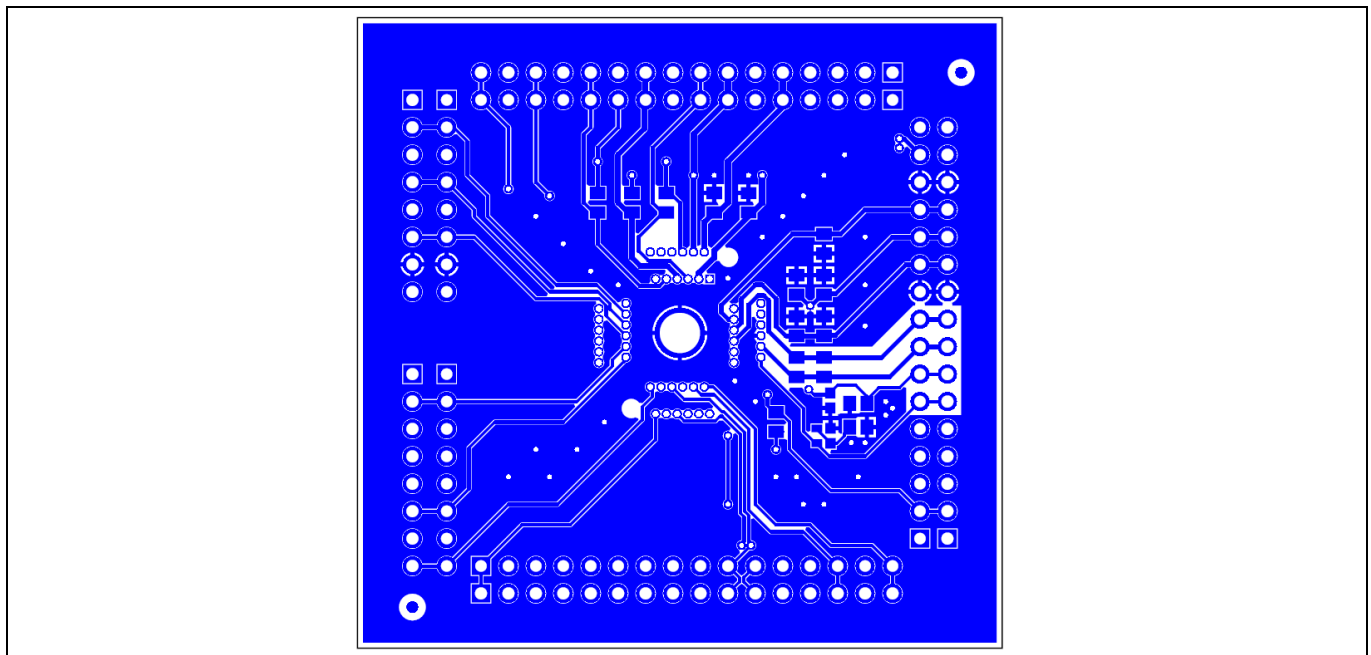


Figure 41 TLE988x\_TLE989x TQFP48 Socketboard, Bottom layer

References and appendices

## 6 References and appendices

### 6.1 Abbreviations and definitions

**Table 9** Abbreviations

| Abbreviation | Meaning   |
|--------------|---|
| BLDC         | Brushless direct current  |
| BSL          | Bootstrap loader  |
| CSA          | Current sense amplifier   |
| CSAN         | Negative current sense amplifier input                                    |
| CSAP         | Positive current sense amplifier input                                    |
| GH1-3        | Gate high-side MOSFETs for phases 1-3                                     |
| GND          | Ground  |
| GL1-3        | Gate low-side MOSFETs for phase 1-3                                       |
| GPIO         | General Purpose Input / Output  |
| ISP          | In-system programmer  |
| LED          | Light Emitting Diode  |
| MON          | Monitor   |
| N.C.         | Not connected   |
| n/u          | Not used  |
| PORST        | Power-on Reset  |
| SH1-3        | Source high-side MOSFET 1-3   |
| SL           | Source low-side MOSFET  |
| SWD          | Arm® serial wire debug  |
| TMS          | Test mode select  |
| UART         | Universal Asynchronous Receiver Transmitter                               |
| USB          | Universal Serial Bus  |
| VAREF        | Reference voltage   |
| *            | Pins marked with * are only available in 64 pin variant of IC             |
| ()           | Pins inside brackets are not connected to the IC by default               |
| #            | Nodes marked with # are connected to the according ICs pin via a resistor |

---

Revision history

**Revision history**

| Document version | Date of release | Description of changes |
|------------------|-----------------|------------------------|
| 1.0              | 13.10.2022      | Initial release        |
|                  |                 |                        |
|                  |                 |                        |