

# TLF50211EL

Buck Converter Core:  
Reference-Design Board

16.07.2014



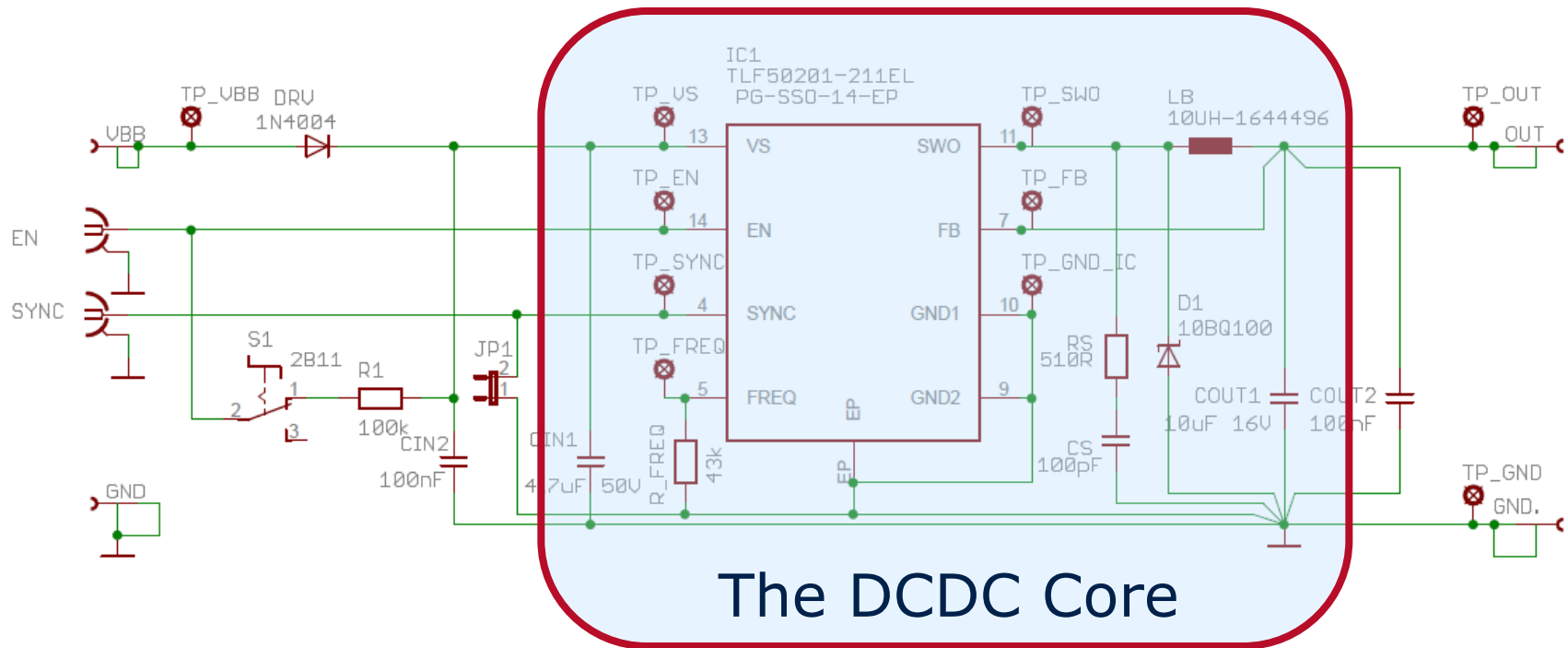
# TLF50211EL Reference-Design Board Motivation




- Enables you to test the TLF50211EL in your application
- It is available in a 3 pin stand alone PCB
- It enables an easy replacement, test and fast prototyping
- It is equipped with a TLF50211EL with fixed output voltage (5 V)
- Reduces the design in efforts to a minimum

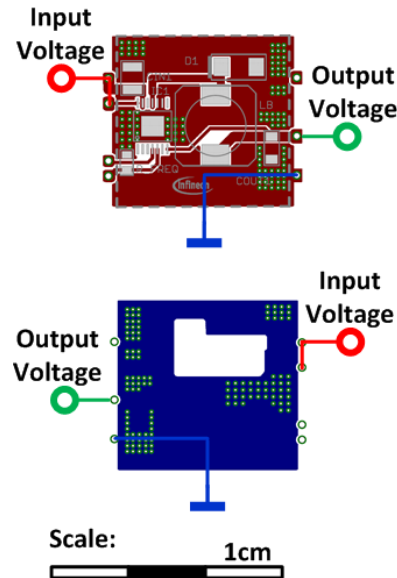
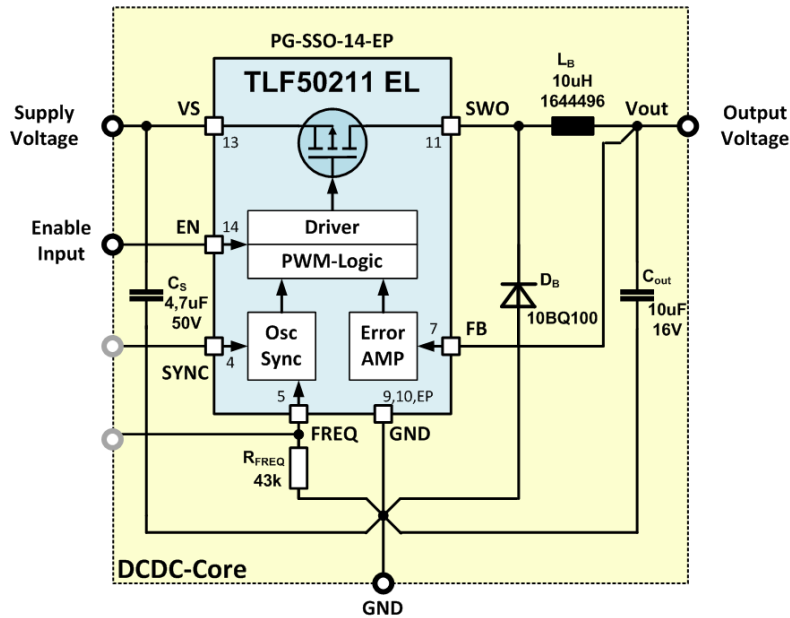
# TLF50211EL Reference-Design Board

## Buck Converter Core: A Small 3-pin PCB



The customer can very easily replace his present supply-IC (V-Reg or DCDC) by our TLF50211 on the  -PCB.

# TLF50211EL Buck Converter Core: Reference-Design Board



**Open-heart surgery  
example:**



**Replacement of a TO220  
VREG  
in an automotive  
application**

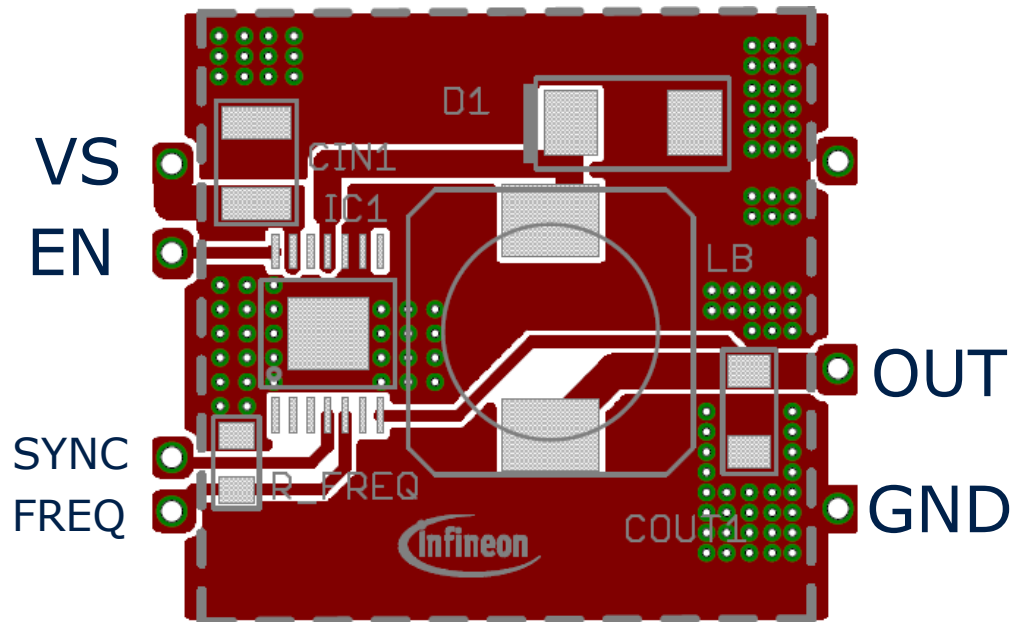
**Ordering code: SP001254796**

**Gerber-File on request**

# TLF50211EL Reference-Design Board Buck Converter Core: Layout Details



## Top Layer



## Bottom Layer

