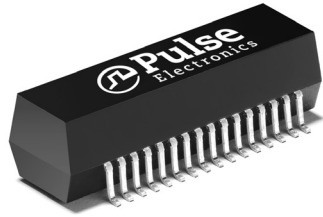








# T1/E1/CEPT/ISDN-PRI TRANSFORMER

Octal SMT Transformer Module, Small Package



-  RoHS peak reflow temperature rating 245°C
-  Industry's smallest T1/E1 quad-port transformer module
-  Crosstalk: -60 dB typically
-  Operating temperature range: -40°C to +85°C
-  UL recognized (some parts pending approval)
-  Isolation voltage: 1500 Vrms

Electrical Specifications @ 25°C - Operating Temperature -40°C to +85°C

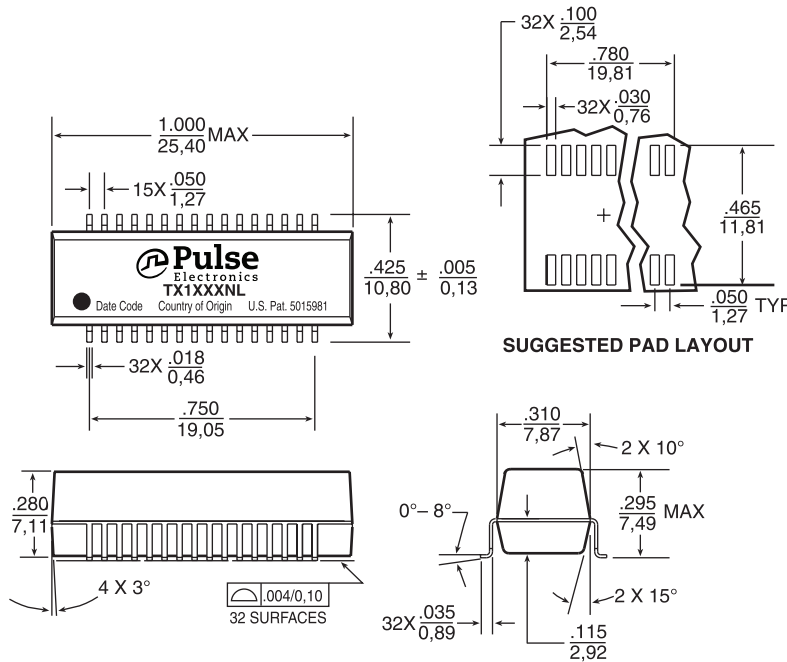
| RoHS-6 Compliant Part Number | Turns Ratio (Pri:Sec 2%) | OCL Secondary @ 25°C (mH MIN) | L <sub>L</sub> (μH MAX) | C <sub>w/w</sub> (pF MAX) | Isolation Voltage (Vrms MIN) | Package/Schematic | Primary Pins                                      |
|------------------------------|--------------------------|-------------------------------|-------------------------|---------------------------|------------------------------|-------------------|---|
| TX1341NL                     | 1:2                      | 1.2                           | .60                     | 30                        | 1500                         | YB/1              | 1-2, 3-4, 5-6, 7-8<br>9-10, 11-12, 13-14, 15-16   |
| TX1344NL                     | 1:1 & 1:2                | 1.2                           | .60                     | 40                        | 1500                         | YB/1              | 1-2, 5-6, 9-10, 13-14 &<br>3-4, 7-8, 11-12, 15-16 |
| TX1470NL                     | 1:1.41                   | 1.2                           | .60                     | 30                        | 1500                         | YB/1              | 1-2, 3-4, 5-6, 7-8<br>9-10, 11-12, 13-14, 15-16   |
| TX1471NL                     | 1:1                      | 1.2                           | .60                     | 30                        | 1500                         | YB/1              | 1-2, 3-4, 5-6, 7-8<br>9-10, 11-12, 13-14, 15-16   |
| TX1472NL                     | 1:2.4 & 1:1              | 1.2                           | .60                     | 30                        | 1500                         | YB/1              | 1-2, 7-8, 9-10, 15-16 &<br>3-4, 5-6, 11-12, 13-14 |
| TX1473NL                     | 1:2 & 1:1                | 1.2                           | .60                     | 30                        | 1500                         | YB/1              | 1-2, 5-6, 9-10, 13-14 &<br>3-4, 5-6, 11-12, 15-16 |
| TX1474NL                     | 1:2.42                   | 1.2                           | .60                     | 30                        | 1500                         | YB/1              | 1-2, 5-6, 9-10, 13-14 &<br>3-4, 5-6, 11-12, 15-16 |
| TX1475NL                     | 1:2 & 1:1                | 1.2                           | .60                     | 30                        | 1500                         | YB/1              | 1-2, 7-8, 9-10, 15-16 &<br>3-4, 5-6, 11-12, 13-14 |

# T1/E1/CEPT/ISDN-PRI TRANSFORMER

Octal SMT Transformer Module, Small Package

## Mechanical

YB



Weight .....2.7 grams

Tape & Reel .....200/reel

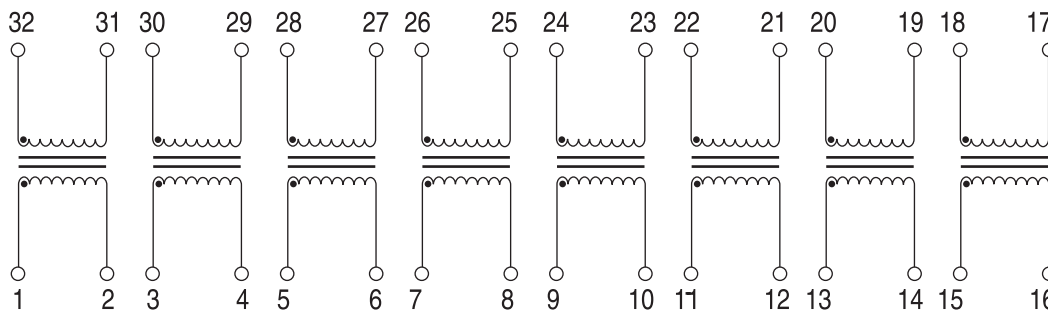
Tray .....20/tray

Dimensions:  $\frac{\text{Inches}}{\text{mm}}$

Unless otherwise specified,  
all tolerances are  $\pm \frac{.010}{0.25}$

## Schematic

1



## For More Information

**Pulse Worldwide Headquarters**  
12220 World Trade Drive  
San Diego, CA  
92128  
U.S.A.

Tel: 858 674 8100  
Fax: 858 674 8262

**Pulse Europe**  
Zeppelinstrasse 15  
D-71083 Herrenberg  
Germany

Tel: 49 7032 78060  
Fax: 49 7032 7806 135

**Pulse China Headquarters**  
B402, Shenzhen Academy of  
Aerospace Technol-  
ogy Bldg.  
10th Kejinan Road  
High-Tech Zone  
Nanshan District  
Shenzhen, PR China  
518057  
Tel: 86 755 33966678  
Fax: 86 755 33966700

**Pulse North China**  
Room 2704/2705  
Super Ocean Finance  
Ctr.  
2067 Yan An Road  
West  
Shanghai 200336  
China  
Tel: 86 21 62787060  
Fax: 86 2162786973

**Pulse South Asia**  
135 Joo Seng Road  
#03-02  
PM Industrial Bldg.  
Singapore 368363

Tel: 65 6287 8998  
Fax: 65 6287 8998

**Pulse North Asia**  
3F, No. 198  
Zhongyuan Road  
Zhongli City  
Taoyuan County 320  
Taiwan R. O. C.  
Tel: 886 3 4356768  
Fax: 886 3 4356823 (Pulse)  
Fax: 886 3 4356820 (FRE)

Performance warranty of products offered on this data sheet is limited to the parameters specified. Data is subject to change without notice. Other brand and product names mentioned herein may be trademarks or registered trademarks of their respective owners. © Copyright, 2012. Pulse Electronics, Inc. All rights reserved.