

UltraPort™ SFP+

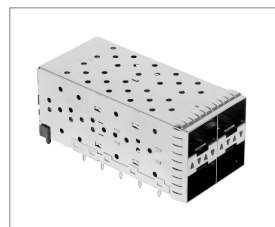
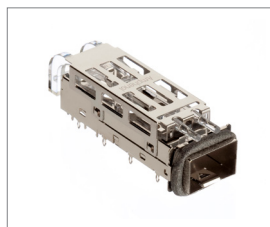
Product Description

The UltraPort™ SFP+ interconnect system is comprised of a 20-position hot swappable I/O connector enclosed in a metal cage mounted to a host PCB. It supports 28Gbps applications with a backward compatibility for next generation Ethernet and Fibre Channel applications. UltraPort™ SFP+ connector shares the same unique mating interface and EMI cage dimensions as the SFP+ form factor. The cages are built for use with several board thicknesses and assembly processes to accommodate server and switch applications for cost optimized solutions. The connector accepts multiple transceivers per INF-8081 and combines, transmits, and receives functions in a low cost, compact and flexible format. Stacked versions (2XN) consist of a 2-row cage with integrated connectors. We offer a wide variety of cage configurations, which have a two-piece construction with enhanced transceiver mating tabs available in press-fit or solder tail versions.

Applications	
Servers/Storage	Cellular infrastructure
Medical diagnostic equipment	Telecommunications hardware
Test and measurement equipment	

Supported Standards
Connector SFF-8071 (16Gbps), SFF-8402 (28Gbps), INF-8081
Cage SFF-8432
Ganged SFF -8433

Product Specifications - UltraPort® SFP+			
CONNECTOR		CAGE	
Materials Specifications			
Housing	Black color, Glass reinforced, Lead Free Solder Reflow Process Compatible Thermo Plastic	PCB Thickness	
Contacts Base Material	Phosphor Bronze	Single Side Mount	1.57 mm (0.062 in.)
Contact Normal Force	40 grams Minimum.	“Belly to Belly”	3.00 mm (0.118 in.)
Plating Solder Tails	Matte tin or Gold flash options		
Plating Mating Area	Gold		
Resonance Dampening Feature	Conductive Polymer		
Operating & Storage Temperature	-55 C° to 85 C°		
Electrical Specifications			
Operating Voltage	30 V DC per contact		
Operating Current	0.5 A per contact		
Differential Impedance	100 Ω +/-10 Ω		
Mechanical Specifications			
Mating Force	50 N max.	Unmating Force	11.50 N max.
Durability	250 mating cycles	Insertion Force to PCB	1000 N for 2 port 2100 N for 4 port 3000 N for 6 port
Options			
Packaging	Tape and Reel	Packaging	Tray, Tape and Reel Available for Single Port
Configurations	1 X N (N=1,2,3,4,5,6) 2 X N (N=1,2,4,5,6,8)		
Environmental Specifications			
RoHS	Yes		
Halogen Free	Yes		
Flammability Rating	UL 94V-0		



Ordering Information

UltraPort™ SFP+ Connector

UE76 3GA 20 X 6 0 0 T

UE76	SERIES DESIGNATION		PACKAGING	T
			T - Tape & Reel	
3G	OPTION		OPTION 3	0
	3GA - 3rd Generation		0 - Standard	
20	NUMBER OF PORTS IN ROW		OPTION 2	0
	20 - 20 SMT Connector		0 - Standard	
X	PLATING		OPTION 1	6
	2 - 30 μ" (0.76 μm) Gold at Mating Area Gold Flash in Termination		6 - Standard	
	3 - 30 μ" (0.76 μm) Gold at Mating Area 3.0-7.62 μm Matte Tin in Termination		8 - 1XN belly to belly with 2XN	
	5 - 15 μ" (0.38 μm) Gold at Mating Area Gold Flash in Termination			
	6 - 15 μ" (0.38 μm) Gold at Mating Area 3.0-7.62 μm Matte Tin in Termination			

UltraPort™ SFP+ Cage

U77 3G X N X 1 X X X 7 X

U77	SERIES DESIGNATION		PACKAGING	X
			1 - Tray	
			T - Tape & Reel	
3G	OPTION		OPTION 1	7
	3G - 3rd Generation		7 - Cage with Extra Bottom Spring Fingers, No Bottom Mid G-Pins	
X	STYLE		DUST COVER OPTION	X
	A - Ganged Cage (One Row)		0 - Without Dust Cover	
	C - Ganged Cage with Light Pipe (2 per port)		D - With Dust Covers	
	D - Ganged Cage with Light Pipe (1 per port)			
	E - One Row Cage and Heat Sink Combo		PLATING OPTION FOR CAGE	X
	N - One Row Cage and Heat Sink Combo (2 Light Pipes per port)		2 - Nickel	
			3 - Matte Tin	
			6 - Silver-Nickel Material (No Plating)	
N	NUMBER OF PORTS IN ROW		PCB MOUNTING OPTION	X
	1 - 1X1		X - Various Options - Consult Factory	
	2 - 1X2			
	3 - 1X3		HEAT SINK & LIGHT PIPE OPTION	X
	4 - 1X4		1 - No Heat Sink/Light Pipe	
	5 - 1X5			
	6 - 1X6			
	8 - 1X8			
X	EMI CHASSIS GROUNDING			
	4 - Gasket			
	6 - Spring Finger			

UltraPort™ Stacked SFP+

UE86 3X X X 2 0 X X X 6 1

UE86	SERIES DESIGNATION		PACKAGING	1
			1 - Tray	
3X	OPTION		PLATING OPTION: CAGE	6
	3G - 3rd Generation		6 - Pre-Plating	
	3T - Thermoenhancement		PLATING OPTION: CONNECTOR	X
X	NUMBER OF PORTS IN ROW		X - Various Options Available - Consult Factory	
	1 - 2X1		DUST COVER OPTION	X
	2 - 2X2		0 - Without Dust Cover	
	4 - 2X4		D - With Dust Covers	
	5 - 2X5			
	6 - 2X6		LIGHT PIPE OPTION	X
	8 - 2X8		X - Various Options Available - Consult Factory	
X	CHASSIS EMI OPTION			
	4 - Gasket			
	6 - Spring Fingers			
2	MOUNTING TYPE : CONNECTOR			
	2 - Standard Press-Fit Pins			
0	MOUNTING TYPE : CAGE			
	0 - Standard Cage			



Order Information:

P: 416.291.4401 | F: 416.292.0647 | E: cages@amphenol-highspeed.com

For more information consult factory or visit amphenol-highspeed.com

