

# UltraPort™ SFP+

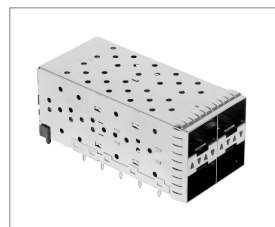
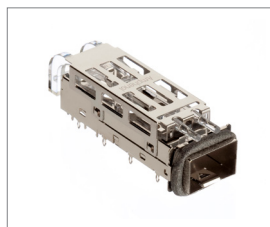
## Product Description

The UltraPort™ SFP+ interconnect system is comprised of a 20-position hot swappable I/O connector enclosed in a metal cage mounted to a host PCB. It supports 28Gbps applications with a backward compatibility for next generation Ethernet and Fibre Channel applications. UltraPort™ SFP+ connector shares the same unique mating interface and EMI cage dimensions as the SFP+ form factor. The cages are built for use with several board thicknesses and assembly processes to accommodate server and switch applications for cost optimized solutions. The connector accepts multiple transceivers per INF-8081 and combines, transmits, and receives functions in a low cost, compact and flexible format. Stacked versions (2XN) consist of a 2-row cage with integrated connectors. We offer a wide variety of cage configurations, which have a two-piece construction with enhanced transceiver mating tabs available in press-fit or solder tail versions.

Applications	
Servers/Storage	Cellular infrastructure
Medical diagnostic equipment	Telecommunications hardware
Test and measurement equipment	

Supported Standards
Connector SFF-8071 (16Gbps), SFF-8402 (28Gbps), INF-8081
Cage SFF-8432
Ganged SFF -8433

Product Specifications - UltraPort® SFP+			
CONNECTOR		CAGE	
Materials Specifications			
<b>Housing</b>	Black color, Glass reinforced, Lead Free Solder Reflow Process Compatible Thermo Plastic	<b>PCB Thickness</b>	
<b>Contacts Base Material</b>	Phosphor Bronze	<b>Single Side Mount</b>	1.57 mm (0.062 in.)
<b>Contact Normal Force</b>	40 grams Minimum.	<b>“Belly to Belly”</b>	3.00 mm (0.118 in.)
<b>Plating Solder Tails</b>	Matte tin or Gold flash options		
<b>Plating Mating Area</b>	Gold		
<b>Resonance Dampening Feature</b>	Conductive Polymer		
<b>Operating &amp; Storage Temperature</b>	-55 C° to 85 C°		
Electrical Specifications			
<b>Operating Voltage</b>	30 V DC per contact		
<b>Operating Current</b>	0.5 A per contact		
<b>Differential Impedance</b>	100 Ω +/-10 Ω		
Mechanical Specifications			
<b>Mating Force</b>	50 N max.	<b>Unmating Force</b>	11.50 N max.
<b>Durability</b>	250 mating cycles	<b>Insertion Force to PCB</b>	1000 N for 2 port 2100 N for 4 port 3000 N for 6 port
Options			
<b>Packaging</b>	Tape and Reel	<b>Packaging</b>	Tray, Tape and Reel Available for Single Port
<b>Configurations</b>	1 X N (N=1,2,3,4,5,6) 2 X N (N=1,2,4,5,6,8)		
Environmental Specifications			
<b>RoHS</b>	Yes		
<b>Halogen Free</b>	Yes		
<b>Flammability Rating</b>	UL 94V-0		



# Ordering Information

**UltraPort™ SFP+ Connector**

UE76 3GA 20 X 6 0 0 T

<b>UE76</b>	<b>SERIES DESIGNATION</b>		<b>PACKAGING</b>	<b>T</b>
<b>3G</b>	<b>OPTION</b>		<b>T</b> - Tape & Reel	
<b>3GA</b>	<b>3rd Generation</b>		<b>OPTION 3</b>	<b>0</b>
<b>20</b>	<b>NUMBER OF PORTS IN ROW</b>		<b>0</b> - Standard	
<b>X</b>	<b>PLATING</b>		<b>OPTION 2</b>	<b>0</b>
	<b>2</b> - 30 μ" (0.76 μm) Gold at Mating Area Gold Flash in Termination		<b>0</b> - Standard	
	<b>3</b> - 30 μ" (0.76 μm) Gold at Mating Area 3.0-7.62 μm Matte Tin in Termination		<b>OPTION 1</b>	<b>6</b>
	<b>5</b> - 15 μ" (0.38 μm) Gold at Mating Area Gold Flash in Termination		<b>6</b> - Standard	
	<b>6</b> - 15 μ" (0.38 μm) Gold at Mating Area 3.0-7.62 μm Matte Tin in Termination		<b>8</b> - 1XN belly to belly with 2XN	

**UltraPort™ SFP+ Cage**

U77 3G X N X 1 X X X 7 X

<b>U77</b>	<b>SERIES DESIGNATION</b>		<b>PACKAGING</b>	<b>X</b>
<b>3G</b>	<b>OPTION</b>		<b>1</b> - Tray	
<b>X</b>	<b>STYLE</b>		<b>T</b> - Tape & Reel	
	<b>A</b> - Ganged Cage (One Row)		<b>OPTION 1</b>	<b>7</b>
	<b>C</b> - Ganged Cage with Light Pipe (2 per port)		<b>7</b> - Cage with Extra Bottom Spring Fingers, No Bottom Mid G-Pins	
	<b>D</b> - Ganged Cage with Light Pipe (1 per port)		<b>DUST COVER OPTION</b>	<b>X</b>
	<b>E</b> - One Row Cage and Heat Sink Combo		<b>0</b> - Without Dust Cover	
	<b>N</b> - One Row Cage and Heat Sink Combo (2 Light Pipes per port)		<b>D</b> - With Dust Covers	
<b>N</b>	<b>NUMBER OF PORTS IN ROW</b>		<b>PLATING OPTION FOR CAGE</b>	<b>X</b>
	<b>1</b> - 1X1		<b>2</b> - Nickel	
	<b>2</b> - 1X2		<b>3</b> - Matte Tin	
	<b>3</b> - 1X3		<b>6</b> - Silver-Nickel Material (No Plating)	
	<b>4</b> - 1X4		<b>PCB MOUNTING OPTION</b>	<b>X</b>
	<b>5</b> - 1X5		<b>X</b> - Various Options - Consult Factory	
	<b>6</b> - 1X6		<b>HEAT SINK &amp; LIGHT PIPE OPTION</b>	<b>X</b>
	<b>8</b> - 1X8		<b>1</b> - No Heat Sink/Light Pipe	
<b>X</b>	<b>EMI CHASSIS GROUNDING</b>			
	<b>4</b> - Gasket			
	<b>6</b> - Spring Finger			

**UltraPort™ Stacked SFP+**

UE86 3X X X 2 0 X X X 6 1

<b>UE86</b>	<b>SERIES DESIGNATION</b>		<b>PACKAGING</b>	<b>1</b>
<b>3X</b>	<b>OPTION</b>		<b>1</b> - Tray	
<b>X</b>	<b>NUMBER OF PORTS IN ROW</b>		<b>PLATING OPTION: CAGE</b>	<b>6</b>
	<b>1</b> - 2X1		<b>6</b> - Pre-Plating	
	<b>2</b> - 2X2		<b>PLATING OPTION: CONNECTOR</b>	<b>X</b>
	<b>4</b> - 2X4		<b>X</b> - Various Options Available - Consult Factory	
	<b>5</b> - 2X5		<b>DUST COVER OPTION</b>	<b>X</b>
	<b>6</b> - 2X6		<b>0</b> - Without Dust Cover	
	<b>8</b> - 2X8		<b>D</b> - With Dust Covers	
<b>X</b>	<b>CHASSIS EMI OPTION</b>		<b>LIGHT PIPE OPTION</b>	<b>X</b>
	<b>4</b> - Gasket		<b>X</b> - Various Options Available - Consult Factory	
	<b>6</b> - Spring Fingers			
<b>2</b>	<b>MOUNTING TYPE : CONNECTOR</b>			
	<b>2</b> - Standard Press-Fit Pins			
<b>0</b>	<b>MOUNTING TYPE : CAGE</b>			
	<b>0</b> - Standard Cage			



## Order Information:

P: 416.291.4401 | F: 416.292.0647 | E: cages@amphenol-highspeed.com

For more information consult factory or visit [amphenol-highspeed.com](http://amphenol-highspeed.com)

