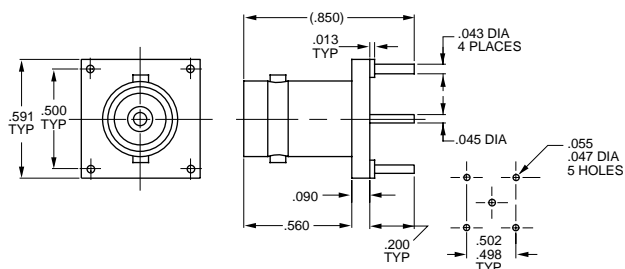


# COAX 20/220 SERIES CIRCUIT BOARD JACKS

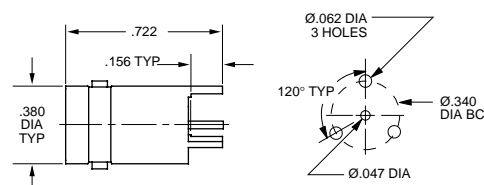
## Circuit Board Jacks...

Trompeter manufactures a wide selection of circuit board jacks. Shown below are the most commonly requested designs.

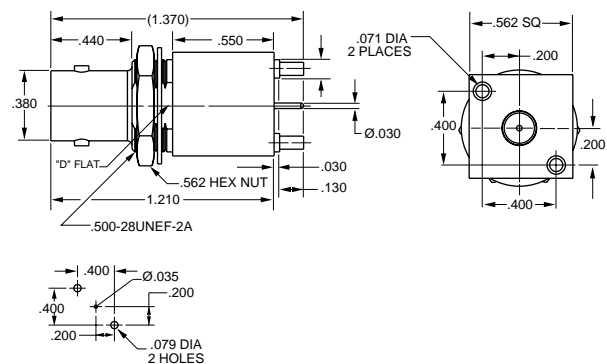
For custom designs, contact the factory or fill out the *Custom Products Request Form* on page 101 and fax it to us.



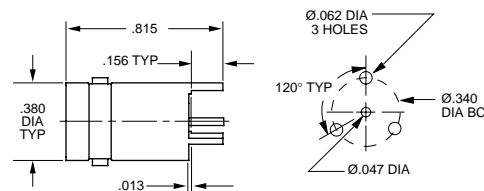
**CIRCUIT BOARD JACK**  
STRAIGHT, 4-LEG 75Ω **UCBJ20F**



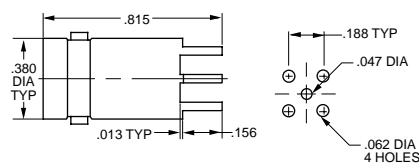
**CIRCUIT BOARD JACK**  
STRAIGHT, 3-LEG 50Ω **CBJ20**



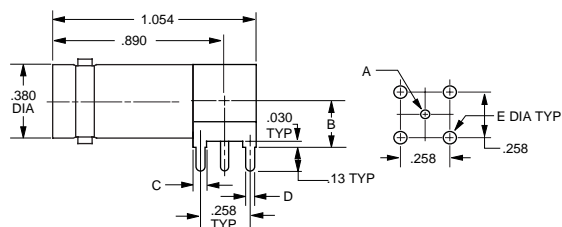
**CIRCUIT BOARD BULKHEAD JACK**  
STRAIGHT 75Ω **UCBBJ23**  
Mounting Hole: D3.060



**CIRCUIT BOARD JACK**  
STRAIGHT, 3-LEG 75Ω **UCBJ223**

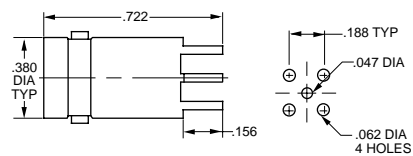


**CIRCUIT BOARD JACK**  
STRAIGHT, 4-LEG 75Ω **UCBJ224**



MODEL NO.	LTR CODE	OHM	A DIM	B DIM	C DIM	D DIM	E DIM
CBJR20A	A	50	.046	.34	.090	.058	.070
UCBJR20A	A	75	.029	.34	.090	.058	.070

**CIRCUIT BOARD JACK**  
RIGHT ANGLE, TALL 50Ω **CBJR20A**  
75Ω **UCBJR20A**



**CIRCUIT BOARD JACK**  
STRAIGHT, 4-LEG 50Ω **CBJ22**

# COAX 20/220 SERIES CIRCUIT BOARD JACKS

**NON-INSULATED CIRCUIT BOARD BULKHEAD JACK**  
**STRAIGHT, 4-LEG** 75Ω **UCBBJ29**  
 Mounting Hole: D3.109

**CIRCUIT BOARD JACK**  
**RIGHT ANGLE** 50Ω **CBBJR220**

**INSULATED CIRCUIT BOARD BULKHEAD JACK**  
**STRAIGHT** 50Ω **CBBJ26**  
 Mounting Hole: D3.156

**CIRCUIT BOARD JACK**  
**RIGHT ANGLE** 75Ω **UCBJR220**

(U)CBBJ26/A MAX. PANEL THICKNESS = .156

MODEL NO.	LTR CODE	OHM	A DIM	B DIM	C DIM	D DIM	E DIM
CBBJR26	-	50	.046	.24	.090	.050	.0625
UCBBJR26	-	75	.029	.24	.090	.050	.0625
CBBJR26A	A	50	.046	.34	.090	.058	.070
UCBBJR26A	A	75	.029	.34	.090	.058	.070

(U)CBBJ29/A HAS SAME DIMENSIONS AS (U)CBBJ26/A EXCEPT MAX. PANEL THICKNESS = .179

**CIRCUIT BOARD BULKHEAD MOUNTING MINI-WECO PATCH JACK**  
**75Ω RIGHT ANGLE** **CBBJR12** B = .24  
**LONG LEG VERSION** **CBBJR12A** B = .34  
 Mounting Hole: D3.250

**RIGHT ANGLE CIRCUIT BOARD BULKHEAD JACK**

INSULATED	50Ω	<b>CBBJR26</b>
INSULATED	75Ω	<b>UCBBJR26</b>
NON-INSULATED	50Ω	<b>CBBJR29</b>
NON-INSULATED	75Ω	<b>UCBBJR29</b>

\* Add "A" for tall versions  
 Example: **CBBJR26A**  
 Mounting Holes: D3.156 (Insulated), D3.179 (Non-Insulated)

**CIRCUIT BOARD MOUNTING MINI-WECO PATCH JACK**  
**75Ω RIGHT ANGLE** **CBBJR12** B = .24  
**LONG LEG VERSION** **CBBJR12A** B = .34

"D" mounting holes, see page 45.