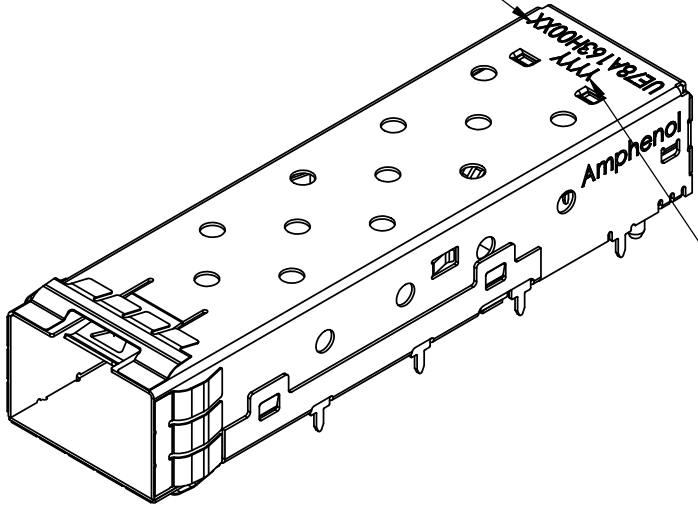


REVISIONS				
REV.	ECN	DESCRIPTION	DATE	APPROVED
E		FINAL DESIGN	SEP08/08	J.SI
F		UPDATED PCB DRAWING	OCT07/08	J.SI
G		MORE DIMS ADDED FOR FAI IN PAGE 2	DEC02/08	J.SI
H		STANDOFFS ADDED TO SPACER	JAN10/13	J.SI

PART NUMBER
(LAST DIGIT INDICATING
PACKAGING TYPE, NOT
PRINTED ON THE PART)



DATE CODE

MATERIAL: (RoHS COMPLIANT)
 CAGE - THRU HOLE PINS:
 COPPER ALLOY
 PLATING:
 3.81 um MIN. MATTE TIN OVER
 1.27 um MIN. NICKEL UNDER
 LAYER.
 CONNECTOR - THRU HOLE PINS:
 PLASTIC HPUSING:
 HIGH TEMP RESISTANT NYLON,
 FLAMMABILITY RATING UL94-0.
 CONTACTS:
 PHOSPHOR BRONZE
 PLATING OPTION:
 0.76 um MIN. HARD GOLD ON
 MATING AREA, 3.81 um MIN.
 MATTE TIN ON TERMINATIONS,
 1.27 um MIN. NICKEL UNDER
 PLATING OVER CONTACTS.
 PACKAGING:
 TAPE AND REEL PACKAGING.
 TEMPERATURE RANGE:
 -40°C TO +85°C
 Amphenol part number:
 UE78-A163H-0033T

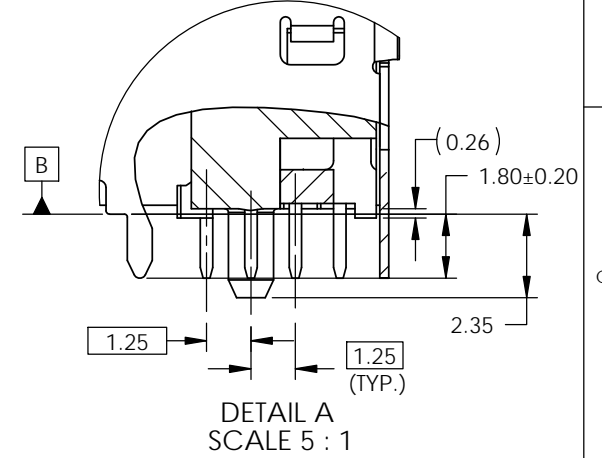
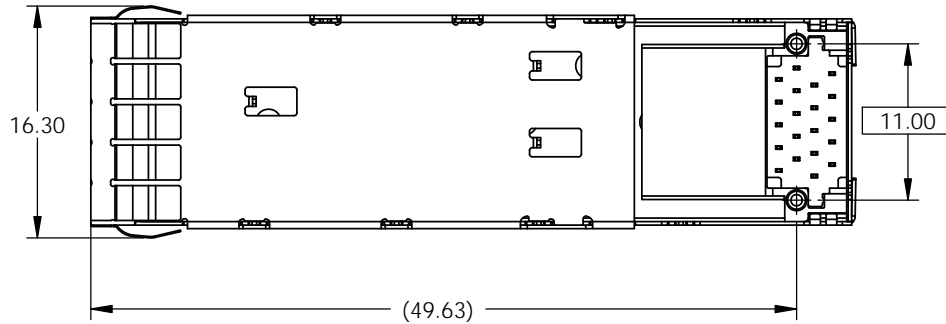
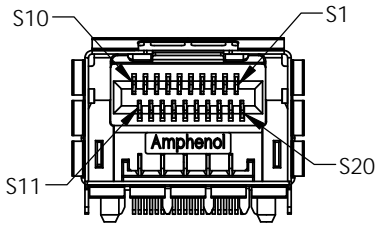
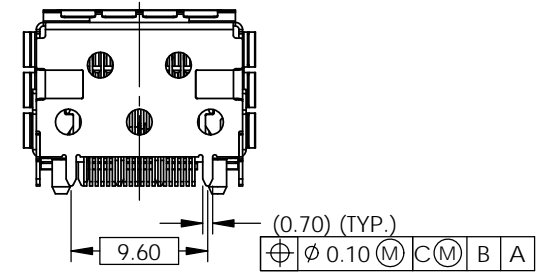
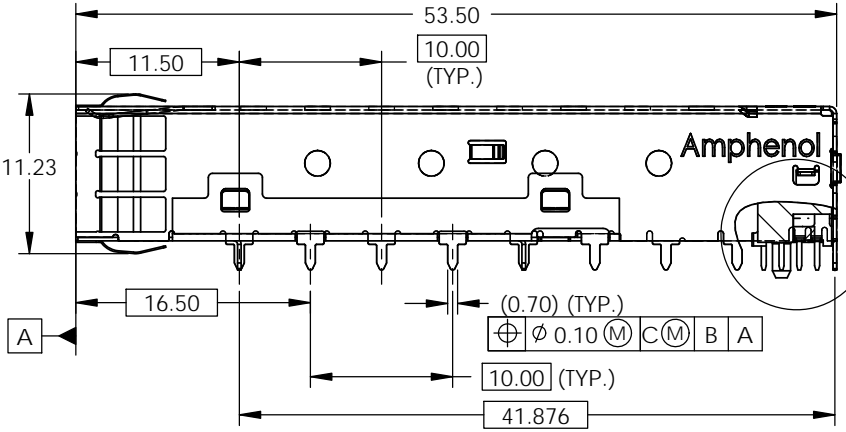
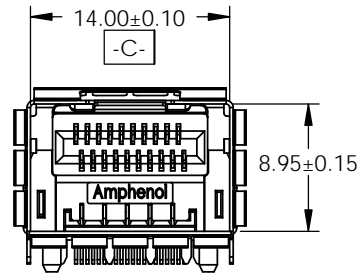


DO NOT SCALE DRAWING

THIS DOCUMENT CONTAINS PROPRIETARY INFORMATION AND SUCH INFORMATION MAY NOT BE DISCLOSED TO OTHERS FOR ANY PURPOSE OR USED FOR MANUFACTURING PUPOSES WITHOUT PERMISSION FROM AMPHENOL CANADA CORP.

UNLESS OTHERWISE SPECIFIED DIMENSIONS ARE IN MELLIMETERS TOLERANCES ARE: DECIMALS ANGLES X.X ± 0.25 ± 1° X.XX ± 0.15	APPROVALS		DATE	Amphenol High Speed Interconnects A Division of Amphenol Corp. www.amphenolcanada.com
	DRAWN	J.SI	APR29/08	
	DESIGNED	J.SI	APR29/08	
	CHECKED	X	X	
MATERIAL AND FINISH	N/A		QA APPD	X
REF.	X	IE APPD	X	X
CODE IDENT. NO.	03554	DWG APPD		
TITLE			SIZE A4	DWG. NO. P-UE78-A163H-0033T
SFP-IPF 1X1 COMBO INVERSED LATCH			SCALE 2:1	PROJECT
			SHEET	1 OF 4

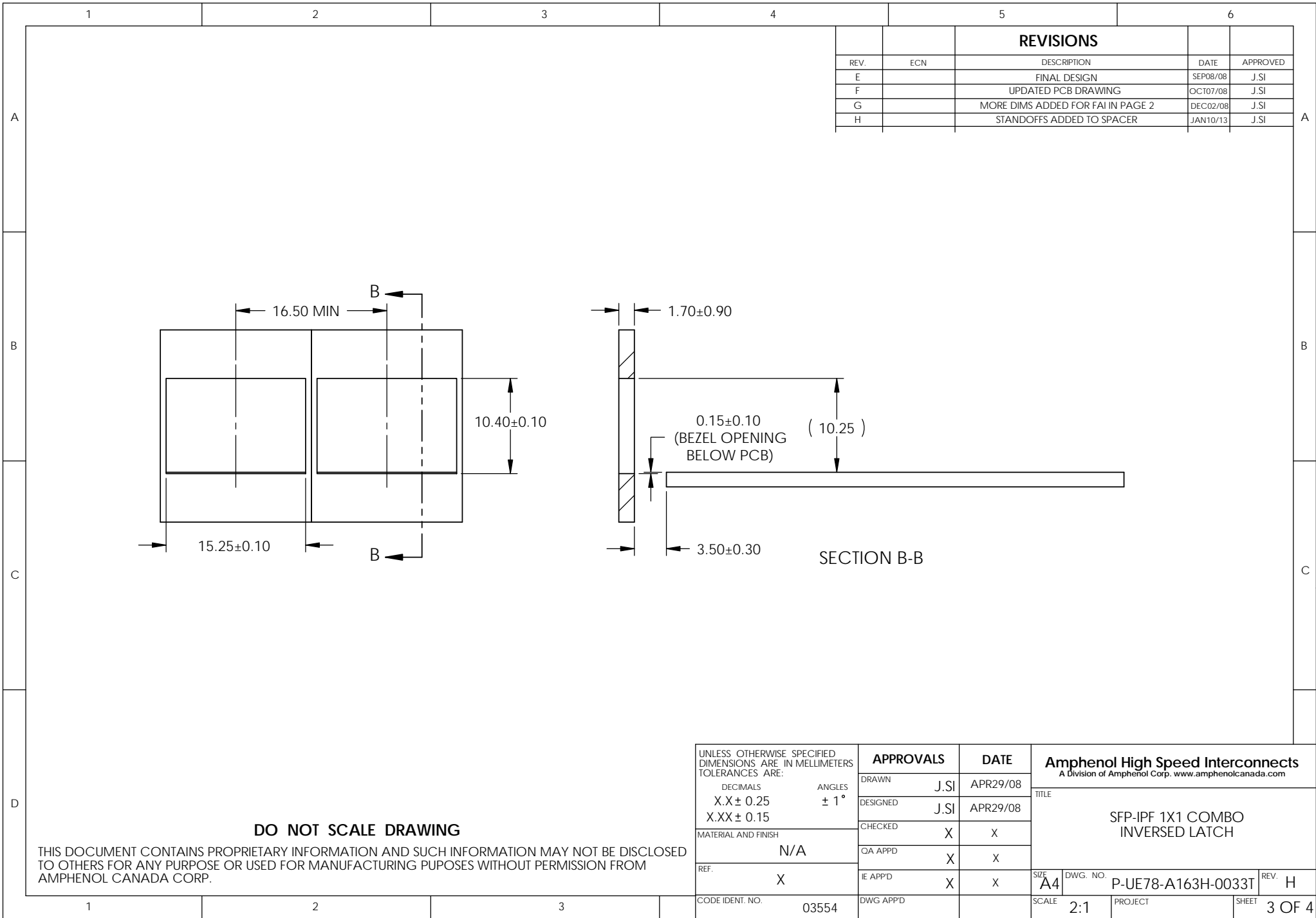
REVISIONS				
REV.	ECN	DESCRIPTION	DATE	APPROVED
E		FINAL DESIGN	SEP08/08	J.SI
F		UPDATED PCB DRAWING	OCT07/08	J.SI
G		MORE DIMS ADDED FOR FAI IN PAGE 2	DEC02/08	J.SI
H		STANDOFFS ADDED TO SPACER	JAN10/13	J.SI



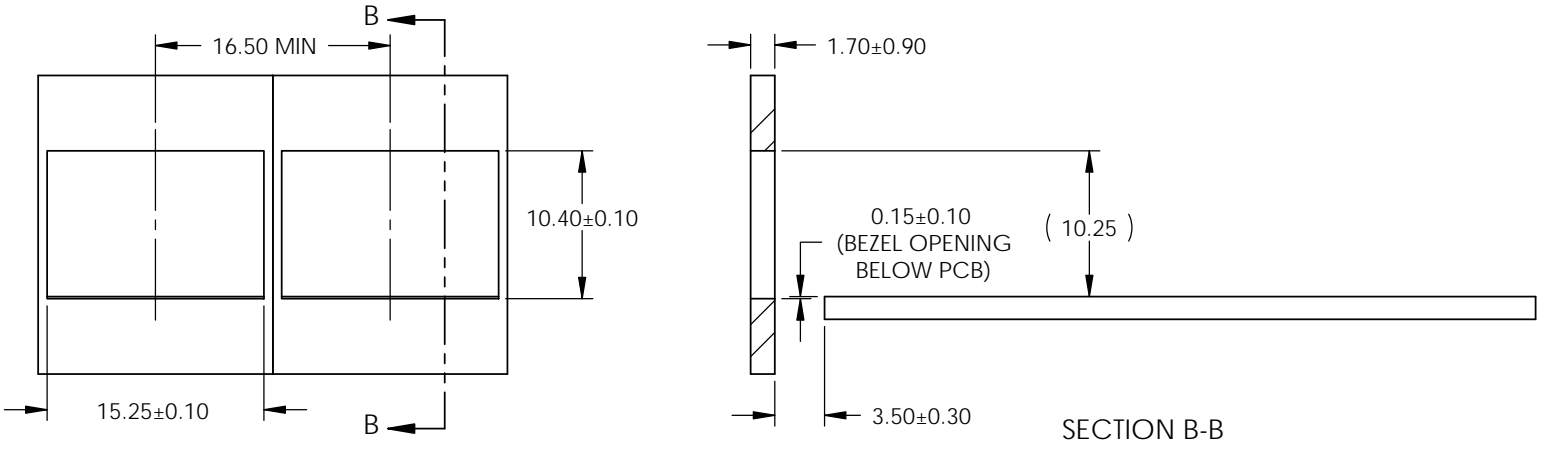
DO NOT SCALE DRAWING

THIS DOCUMENT CONTAINS PROPRIETARY INFORMATION AND SUCH INFORMATION MAY NOT BE DISCLOSED TO OTHERS FOR ANY PURPOSE OR USED FOR MANUFACTURING PUPOSES WITHOUT PERMISSION FROM AMPHENOL CANADA CORP.

UNLESS OTHERWISE SPECIFIED DIMENSIONS ARE IN MELLIMETERS TOLERANCES ARE:		APPROVALS		DATE	Amphenol High Speed Interconnects A Division of Amphenol Corp. www.amphenolcanada.com	
DECIMALS	ANGLES	DRAWN	J.SI	APR29/08	TITLE SFP-IPF 1X1 COMBO INVERSED LATCH	
X.X ± 0.25	± 1°	DESIGNED	J.SI	APR29/08		
X.XX ± 0.15		CHECKED	X	X		
MATERIAL AND FINISH	N/A	QA APPD	X	X		
REF.	X	IE APPD	X	X	SIZE A4	DWG. NO. P-UE78-A163H-0033T
CODE IDENT. NO.	03554	DWG APPD			SCALE 2:1	PROJECT
						SHEET 2 OF 4



REVISIONS				
REV.	ECN	DESCRIPTION	DATE	APPROVED
E		FINAL DESIGN	SEP08/08	J.SI
F		UPDATED PCB DRAWING	OCT07/08	J.SI
G		MORE DIMS ADDED FOR FAI IN PAGE 2	DEC02/08	J.SI
H		STANDOFFS ADDED TO SPACER	JAN10/13	J.SI



SECTION B-B

DO NOT SCALE DRAWING

THIS DOCUMENT CONTAINS PROPRIETARY INFORMATION AND SUCH INFORMATION MAY NOT BE DISCLOSED TO OTHERS FOR ANY PURPOSE OR USED FOR MANUFACTURING PUPOSES WITHOUT PERMISSION FROM AMPHENOL CANADA CORP.

UNLESS OTHERWISE SPECIFIED DIMENSIONS ARE IN MELLIMETERS TOLERANCES ARE: DECIMALS ANGLES X.X ± 0.25 ± 1° X.XX ± 0.15	APPROVALS		DATE
	DRAWN	J.SI	APR29/08
	DESIGNED	J.SI	APR29/08
	CHECKED	X	X
	QA APPD	X	X
MATERIAL AND FINISH	N/A		
REF.	X	IE APPD	X X
CODE IDENT. NO.	03554	DWG APPD	

Amphenol High Speed Interconnects A Division of Amphenol Corp. www.amphenolcanada.com			
TITLE SFP-IPF 1X1 COMBO INVERSED LATCH			
SIZE A4	DWG. NO. P-UE78-A163H-0033T	REV. H	
SCALE 2:1	PROJECT	SHEET 3 OF 4	