

REVISIONS

REV.	ECN	DESCRIPTION	DATE	APPROVED
A		PROPOSAL	SEP.26, 11	J.SI
B		PROPOSAL	AUG.15, 12	J.SI
C		OPTION 2 AND OPTION 5 ADDED	AUG.22, 13	J.SI

AMPHENOL PART NUMBER CONFIGURATION

UE86 - L 6 6 2 7 - 0 0 X X 1

PRESS FIT CONNECTOR PLATING

- 2 = 0.76 µm MIN. GOLD ON MATING AREA
0.38-2.54 µm MATTE TIN OVER 1.27µm MIN NICKEL ON TERMINATION
- 3 = 0.76 µm MIN. GOLD ON MATING AREA
3.81-7.62 µm MATTE TIN ON TERMINATION
- 5 = 0.38 µm MIN. GOLD ON MATING AREA
0.38-2.54 µm MATTE TIN OVER 1.27µm MIN NICKEL ON TERMINATION
- 6 = 0.38 µm MIN. GOLD ON MATING AREA
3.81-7.62 µm MATTE TIN ON TERMINATION

CAGE PLATING

- 2 = NICKEL PLATING
- 3 = MATTE TIN PLATING

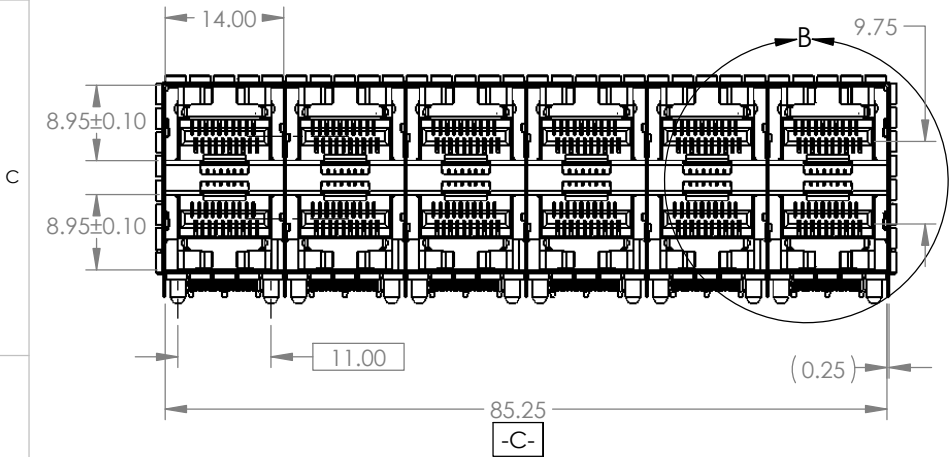
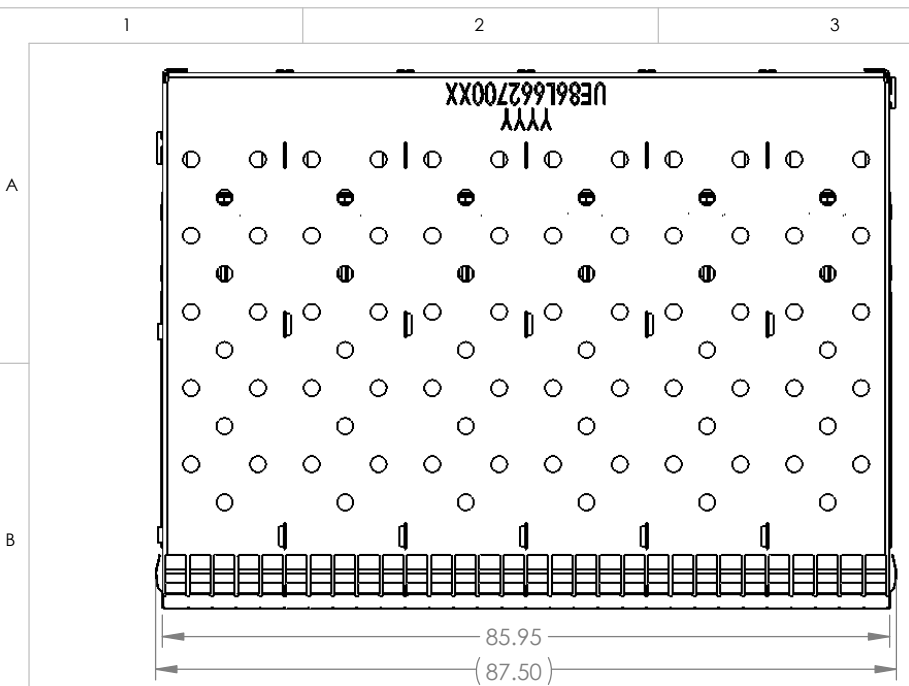
DO NOT SCALE DRAWING

THIS DOCUMENT CONTAINS PROPRIETARY INFORMATION AND SUCH INFORMATION MAY NOT BE DISCLOSED TO OTHERS FOR ANY PURPOSE OR USED FOR MANUFACTURING PURPOSES WITHOUT PERMISSION FROM AMPHENOL CANADA CORP.

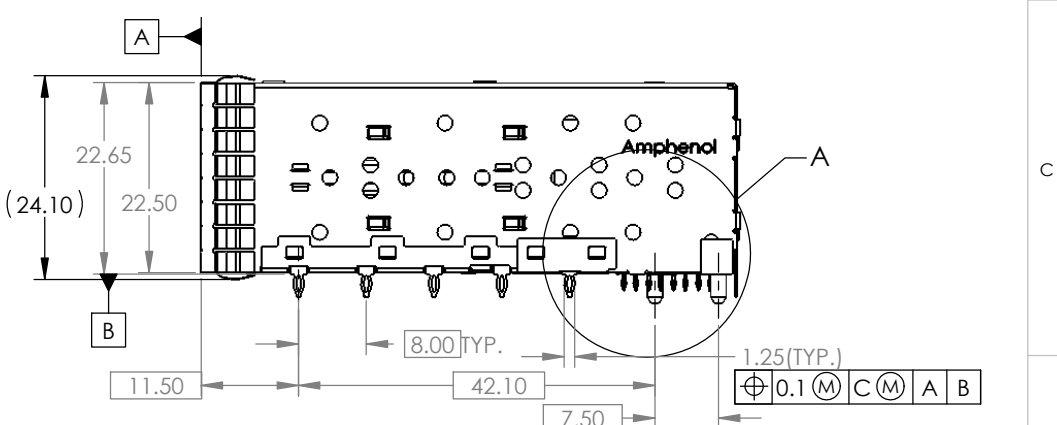
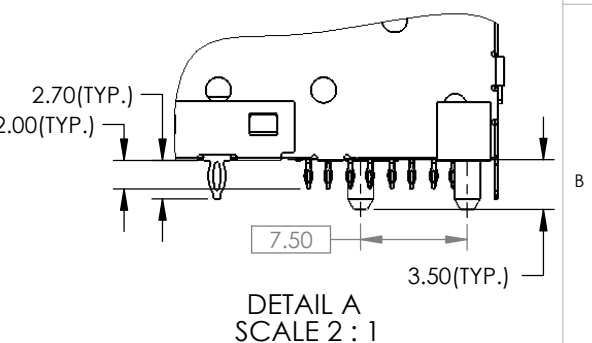
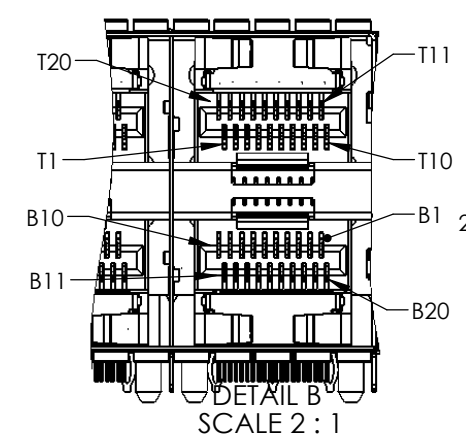
MATERIAL: (RoHS COMPLIANT)

- CAGE - PRESS FIT:
COPPER ALLOY
- PLATING:
OPTION 2: NICKEL 2.54 µm MIN.
OPTION 3: MATTE TIN 2.54 µm MIN.
- CONNECTOR - PRESS FIT:
PLASTIC HOUSING:
LCP, FLAMMABILITY RATING UL94-V0.
- CONTACTS:
PHOSPHOR BRONZE
- PLATING OPTION:
SEE AMPHENOL PART NUMBER CONFIGURATION FOR OPTIONS.
- PACKAGING:
TRAY PACKAGING.
- TEMPERATURE RANGE:
-40°C TO +85°C

UNLESS OTHERWISE SPECIFIED DIMENSIONS ARE IN MILLIMETERS TOLERANCES ARE: DECIMALS X.X ± 0.25 X.XX ± 0.15 MATERIAL AND FINISH N/A REF. X CODE IDENT. NO. 03554	APPROVALS	DATE	Amphenol High Speed Interconnects A Division of Amphenol Corp. www.amphenol-highspeed.com		
	DRAWN Grace.L	SEP.26, 11			
	CHECKED J.SI	SEP.26, 11	TITLE 2X6 SFP+ EXPRESSPORT LOW PROFILE COMBO		
	QA APPD				
	IE APPD		SIZE A4	DWG. NO. P-UE86-L6627-00XX1	REV. C
	DWG APPD		SCALE 2:3	PROJECT	SHEET 1 OF 5



REVISIONS				
REV.	ECN	DESCRIPTION	DATE	APPROVED
A		PROPOSAL	SEP.26, 11	J.SI
B		PROPOSAL	AUG.15, 12	J.SI
C		OPTION 2 AND OPTION 5 ADDED	AUG.22, 13	J.SI



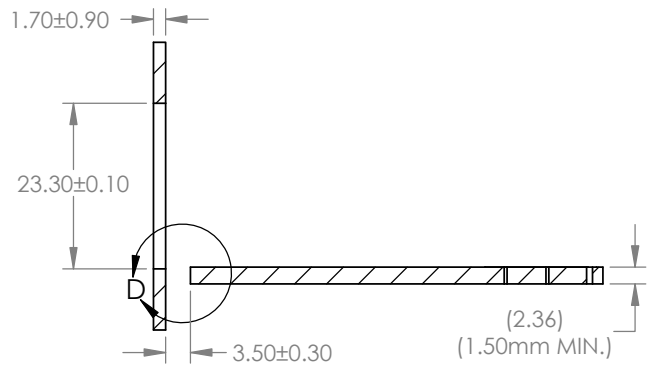
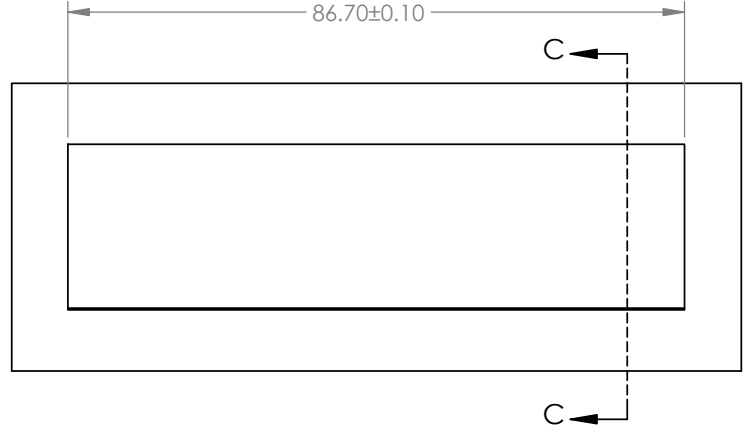
DO NOT SCALE DRAWING

THIS DOCUMENT CONTAINS PROPRIETARY INFORMATION AND SUCH INFORMATION MAY NOT BE DISCLOSED TO OTHERS FOR ANY PURPOSE OR USED FOR MANUFACTURING PURPOSES WITHOUT PERMISSION FROM AMPHENOL CANADA CORP.

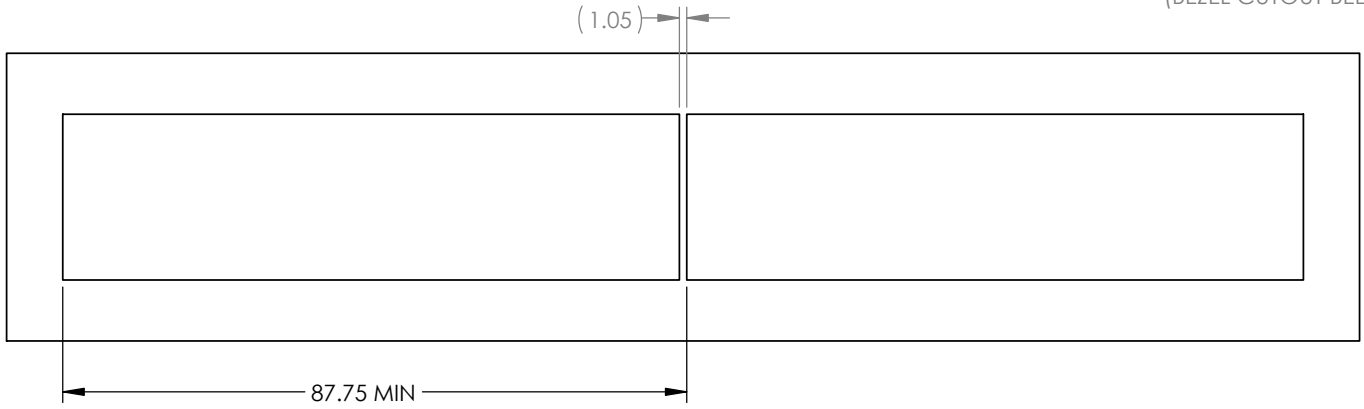
UNLESS OTHERWISE SPECIFIED DIMENSIONS ARE IN MILLIMETERS TOLERANCES ARE: DECIMALS X.X ± 0.25 ANGLES ± 1° MATERIAL AND FINISH N/A REF. X CODE IDENT. NO. 03554	APPROVALS	DATE	Amphenol High Speed Interconnects A Division of Amphenol Corp. www.amphenol-highspeed.com
	DRAWN Grace.L	SEP.26, 11	
	DESIGNED		
	CHECKED J.SI	SEP.26, 11	
	QA APPD		TITLE
	IE APPD		2X6 SFP+ EXPRESSPORT LOW PROFILE COMBO
	DWG APPD		SIZE A4 DWG. NO. P-UE86-L6627-00XX1
			SCALE 1:1 PROJECT SHEET 2 OF 5

1 2 3 4 5 6

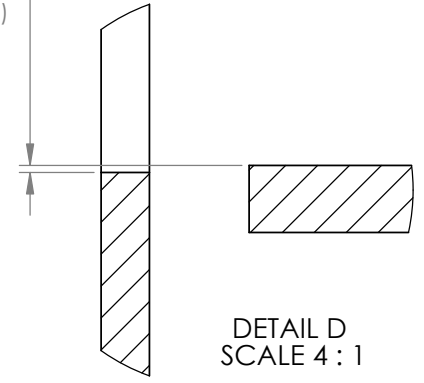
REVISIONS				
REV.	ECN	DESCRIPTION	DATE	APPROVED
A		PROPOSAL	SEP.26, 11	J.SI
B		PROPOSAL	AUG.15, 12	J.SI
C		OPTION 2 AND OPTION 5 ADDED	AUG.22, 13	J.SI



SECTION C-C



0.25±0.10
(BEZEL CUTOUT BELOW PCB)



DO NOT SCALE DRAWING

THIS DOCUMENT CONTAINS PROPRIETARY INFORMATION AND SUCH INFORMATION MAY NOT BE DISCLOSED TO OTHERS FOR ANY PURPOSE OR USED FOR MANUFACTURING PURPOSES WITHOUT PERMISSION FROM AMPHENOL CANADA CORP.

UNLESS OTHERWISE SPECIFIED DIMENSIONS ARE IN MILLIMETERS TOLERANCES ARE:	
DECIMALS	ANGLES
X.X ± 0.25	± 1°
X.XX ± 0.15	
MATERIAL AND FINISH	
N/A	
REF.	X
CODE IDENT. NO.	03554

APPROVALS		DATE
DRAWN	Grace.L	SEP.26, 11
DESIGNED		
CHECKED	J.SI	SEP.26, 11
QA APP'D		
IE APP'D		
DWG APP'D		

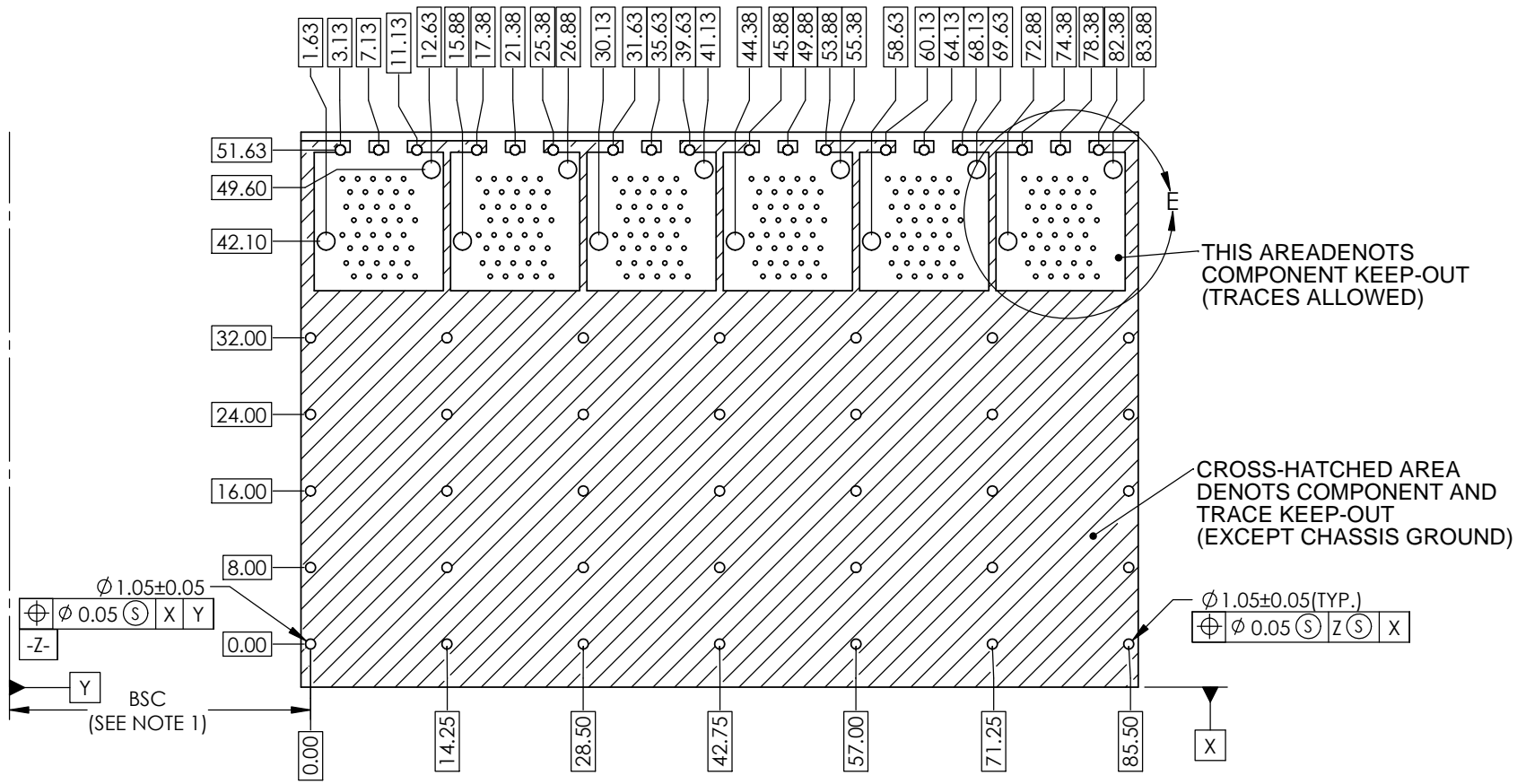
Amphenol High Speed Interconnects A Division of Amphenol Corp. www.amphenol-highspeed.com		
TITLE		
2X6 SFP+ EXPRESSPORT LOW PROFILE COMBO		
SIZE	DWG. NO.	REV.
A4	P-UE86-L6627-00XX1	C
SCALE	PROJECT	SHEET
1:1		3 OF 5

1 2 3

- NOTES:
 1. DATUM AND BASIC DIMENSIONS ESTABLISHED BY CUSTOMER.
 2. 1.05 DIAMETER HOLES ARE CHASSIS GROUND.

REVISIONS

REV.	ECN	DESCRIPTION	DATE	APPROVED
A		PROPOSAL	SEP.26, 11	J.SI
B		PROPOSAL	AUG.15, 12	J.SI
C		OPTION 2 AND OPTION 5 ADDED	AUG.22, 13	J.SI



DO NOT SCALE DRAWING

THIS DOCUMENT CONTAINS PROPRIETARY INFORMATION AND SUCH INFORMATION MAY NOT BE DISCLOSED TO OTHERS FOR ANY PURPOSE OR USED FOR MANUFACTURING PURPOSES WITHOUT PERMISSION FROM AMPHENOL CANADA CORP.

UNLESS OTHERWISE SPECIFIED DIMENSIONS ARE IN MILLIMETERS TOLERANCES ARE: DECIMALS X.X ± 0.25 ANGLES ± 1° MATERIAL AND FINISH N/A REF. X CODE IDENT. NO. 03554	APPROVALS	DATE	Amphenol High Speed Interconnects A Division of Amphenol Corp. www.amphenol-highspeed.com 2X6 SFP+ EXPRESSPORT LOW PROFILE COMBO
	DRAWN Grace.L	SEP.26, 11	
	DESIGNED		
	CHECKED J.SI	SEP.26, 11	
	QA APPD		
	IE APPD		
	DWG APPD		
	SCALE 3:2	PROJECT	
	SIZE A4	DWG. NO. P-UE86-L6627-00XX1	REV. C
		SHEET	4 OF 5