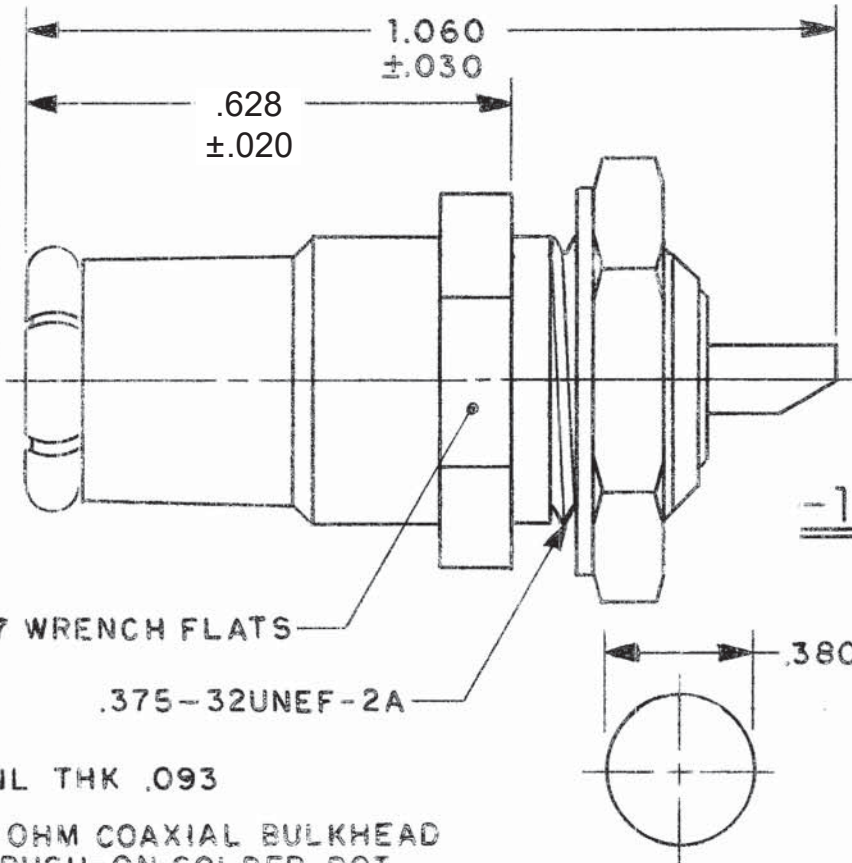


DATA CONTAINED IN THIS DOCUMENT IS PROPRIETARY TO TROMPETER ELECTRONICS INC. AND SHALL NOT BE DISCLOSED, COPIED OR USED FOR PROCUREMENT OR MANUFACTURE WITHOUT EXPRESS WRITTEN PERMISSION.

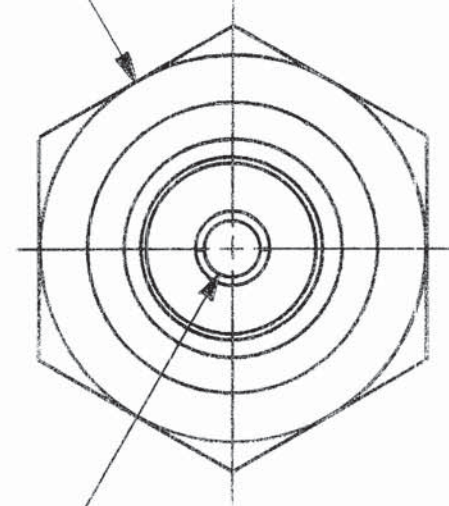
| DASH NO | MODEL NO | IMPED OHMS |
|---------|----------|------------|
| -1      | PL121    | 50         |
| -2      | UPL121   | 75         |

| INCH  | MM    |
|-------|-------|
| .005  | 0.13  |
| .030  | 0.76  |
| .068  | 1.73  |
| .093  | 2.36  |
| .380  | 9.65  |
| .437  | 11.10 |
| .500  | 12.70 |
| .628  | 15.95 |
| 1.060 | 26.92 |

| REVISIONS |      |   | 105-0414 |              | SH 1    |
|-----------|------|---|----------|--------------|---------|
| REV       | EO   | DESCRIPTION   | DWN      | APPROVED     | DATE    |
| C         | 6533 | REV & REDWN   | RJS      | <i>DC</i>    | 9-11-84 |
| D         | 6747 | 'D' FLAT DELETED                                    | MRH      | <i>DC</i>    | 4-25-85 |
| E         | 7899 | ITEM 2 P/N WAS 8000-1295<br>①, DWG NO WAS 1005-0414 | DKC      | <i>ES/PM</i> | 1-20-85 |



.500 HEX NUT



SOLDER POT ACCEPTS .068 DIA CONDUCTOR

-1 SHOWN

RECOMMENDED  
PANEL CUTOUT  
SCALE: 2/1

4. MAX PNL THK .093
3. 50 & 75 OHM COAXIAL BULKHEAD MOUNT PUSH-ON SOLDER POT PLUG, BNC INTERFACE
2. FINISH: NICKEL
1. ALL DIM ARE IN INCHES

| QTY                  | DESCRIPTION |  | PART NUMBER  | ITEM         |
|----------------------|-------------|--|--------------|--------------|
| TOL UNLESS SPECIFIED |             | <b>TROMPETER</b><br><b>ELECTRONICS, INC.</b> | PL121/UPL121 |              |
| .XX                  | ±           |  |              |              |
| .XXX                 | ± .005      |  |              |              |
| .XXX                 | ±           |  |              |              |
| ANGLES ±             |             | MATERIAL                                     | CODE IDENT   | DRAWING NO.  |
| DWN                  | RJS         | 9-3-84                                       | —            | 14949        |
| CHK                  | DC          | 9-10-84                                      |              | 105-0414     |
| ENGR                 | <i>DM</i>   | 9-14-84                                      |              | 105-0414     |
| APPR                 | <i>DC</i>   | 9-14-84                                      | SCALE 4/1    | DATE 1-15-74 |
| NEXT ASSY            |             | DATE 1-15-74                                 |              | SHEET 1 OF 2 |