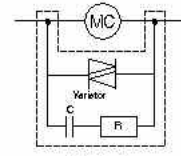


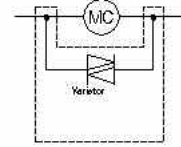


Surge Units (for use with frame sizes 22AF-100AF)

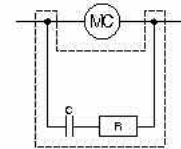
| Part No. | Rated Voltage | Varistor | Internal Ratings Resistor | Capacitor |
|----------|----------------|----------|------------------------------|-----------|
| US-1 | 24-48VAC | 120V | 100 Ω | 0.1 μF |
| US-2 | 100-125VAC | 270V | 100 Ω | 0.1 μF |
| US-3 | 200-240VAC | 470V | 100 Ω | 0.1 μF |
| US-4 | 24-48DC | 120V | 100 Ω | 0.47 μF |
| US-5 | 100-125VDC | 270V | 100 Ω | 0.47 μF |
| US-6 | 200-220VDC | 470V | 100 Ω | 0.47 μF |
| US-11 | 24-48V AC/DC | 120V | - | - |
| US-12 | 100-125V AC/DC | 270V | - | - |
| US-13 | 200-240V AC/DC | 470V | - | - |
| US-14 | 380-440V AC/DC | 1000V | - | - |
| US-22 | 100-125VAC | - | 56 Ω | 0.1 μF |



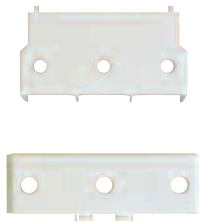
US-1~6



US-11~14



US-22



Terminal Covers

| Part No. | Frame Size |
|----------|------------|
| AP-220 | 225AF |
| AP-400 | 400AF |
| AP-600 | 800AF |



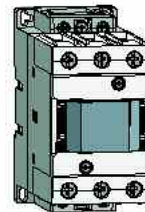
Insulation Barriers

| Part No. | Frame Size |
|----------|--------------|
| AI-180 | 225AF, 400AF |
| AI-600 | 800AF |



Safety Cover*

| Part No. | |
|----------|------------------|
| AP-9 | (Fits all sizes) |



Bases for Separate Mounting Overload Relay

| Part No. | Overload Relay |
|----------|----------------|
| UZ-32 | MT-32 |
| UZ-63/S | MT-63 |
| UZ-95/S | MT-95 |
| UZ-150/S | MT-150A |

Remote Reset Units for Overload Relay



| Part No. | Cable Length (L) |
|----------|---------------------|
| UM-4R | 400 mm |
| UM-5R | 500 mm |
| UM-6R | 600 mm |