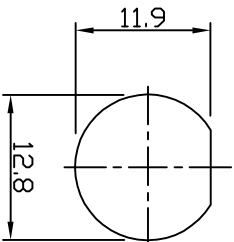
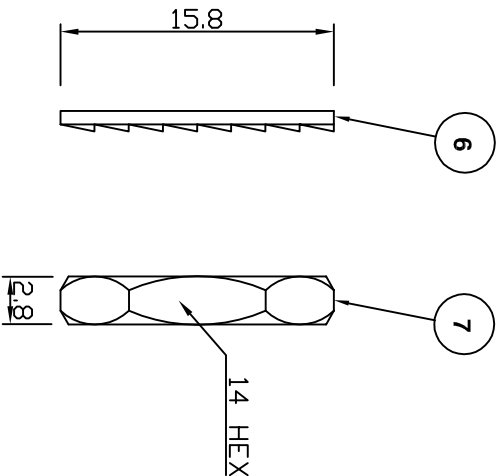


RECOMMENDED PCB LAYOUT



RECOMMENDED PANEL CUTOUT



Electrical Characteristics	
Nominal Impedance:	75 ohms
Frequency Range:	DC to 1 GHz
VSWR:	1.3:1 maximum
Insertion Loss:	0.2 dB at 1 GHz
Operating Voltage (rms):	500 V maximum at sea level
Dielectric Withstand Voltage (rms):	1500 V maximum at sea level
Contact Resistance:	3.0 milliohms maximum
Insulation Resistance:	5000 megohms minimum
Mechanical Characteristics	
Mating Cycles:	500 cycles minimum
Interface Dimensions:	Conform to MIL-C-39012
Environmental Characteristics	
Temperature Range:	-55 °C to +85 °C

REF.	DESCRIPTION	MATERIAL	PLATING
1	Body	Zinc Alloy	Nickel
2	Insulator	Polypropylene	
3	Ground Terminal	Copper-clad Steel	Tin
4	Socket Contact	Phosphor	Gold
5	Mount Post	Phosphor	Tin > 5 Microns
6	Lock Washer	Brass	Nickel
7	Hex Nut	Brass	Nickel

PCB Layout	MS	6	28 Aug 09
Complete Update	KA	5	13 Mar 08
Plating thickness added	MS	4	15 Jan 08
Nut & washer added	JW	3	04 Apr 06
CAD Issue	SN	2	07 Feb 02
First Issue	DH	1	06 Aug 98
DESCRIPTION OF REVISION	APPVD	ISS	DATE



EMERSON
Network Power

Connectivity Solutions
7-13 Russel Way,
Widford Industrial Estate,
Chelmsford, Essex,
CM1 3AA, UK.
Tel: +44 (0) 1245 359515
Fax: +44 (0) 1245 358938

SCALE: Not To Scale
DIMENSIONS: mm
TOLERANCES:
± 0.2mm unless
otherwise stated

DRAWN BY: J Williams
CHECKED BY: M Terry
APPROVED BY: A Tusl
DATE: 04 Apr 06

TITLE:

**BNC Vertical PCB
Mount Jack**

PART NUMBER:

VBM301-75

PAGE: 1 of 1