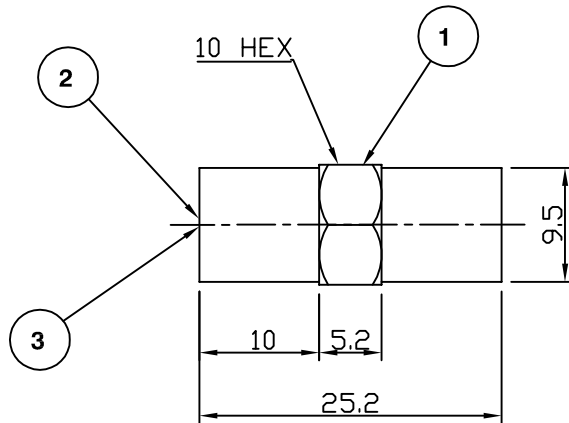


RoHS COMPLIANT



**Electrical Characteristics**

Nominal Impedance: 50 ohms  
 Frequency Range: DC to 2 GHz  
 VSWR: 1.3:1 Max

**Mechanical Characteristics**

Mating Cycles: 500 cycles minimum

	PART	DESCRIPTION
1	Body	Brass, nickel plated
2	Dielectric	Delrin
3	Contact	Brass, gold plated

First Issue	JT	1	05 Aug 10
DESCRIPTION OF REVISION	APPVD	ISS	DATE



Cinch Connectivity Solutions  
 7-13 Russell Way,  
 Widford Industrial Estate,  
 Chelmsford, Essex,  
 CM1 3AA, UK.  
 Tel: +44 (0) 1245 359515  
 Fax: +44 (0) 1245 358938

SCALE: Not To Scale

DIMENSIONS: mm

TOLERANCES:  
 ± 0.2mm unless  
 otherwise stated

DRAWN BY: Johnson  
 CHECKED BY: M Spooner  
 APPROVED BY: M Spooner  
 DATE: 05 Aug 10

TITLE:  
**FME Plug to FME Plug**

PART NUMBER:  
**VRA601**  
 PAGE: 1 of 1