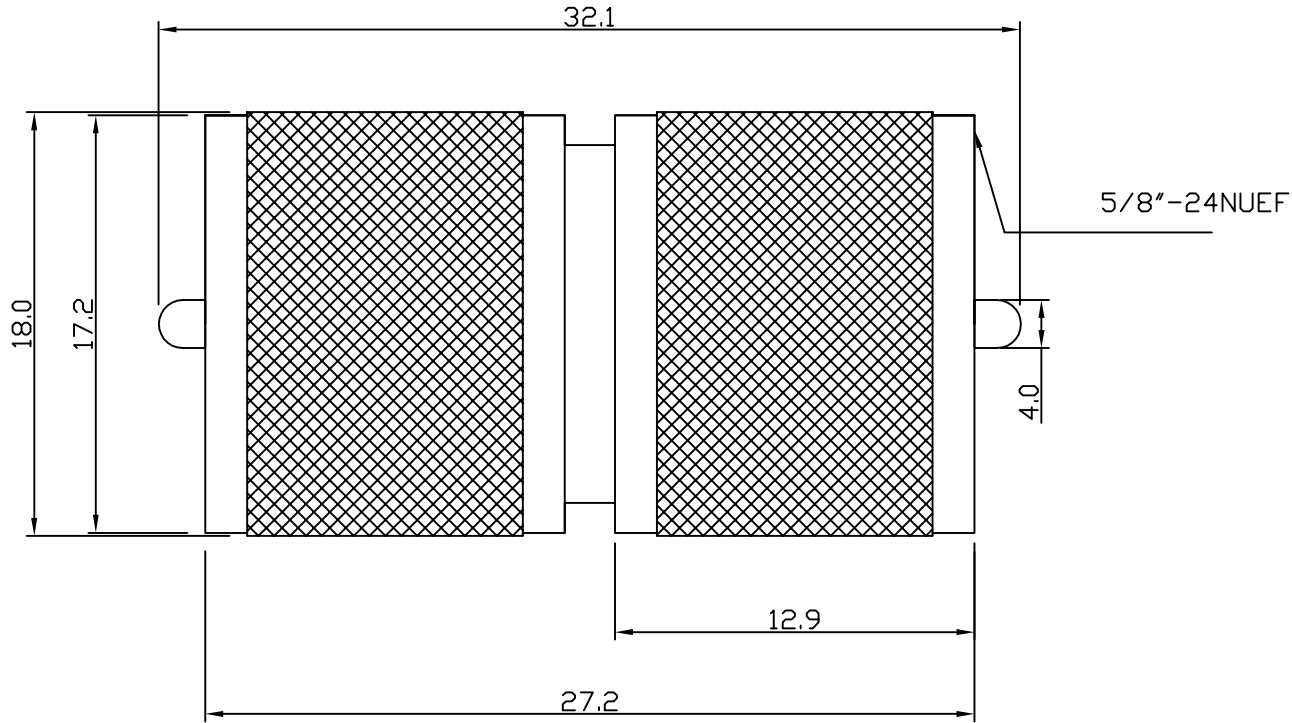


RoHS COMPLIANT



Electrical Characteristics

Nominal Impedance: Non Constant
 Frequency Range: DC to 300 MHz
 Operating Voltage (rms): 500V maximum at sea level
 Dielectric Withstand Voltage (rms): 1500V maximum at sea level
 Contact Resistance: 1.5 milliohms maximum
 Insulation Resistance: 500 megohms minimum

Mechanical Characteristics

Mating Cycles: 500 cycles minimum
 Interface Dimensions: Conform to MIL-C-39012

Environmental Characteristics

Temperature Range: -55 °C to +85 °C

PART	DESCRIPTION
Shell	Brass, Nickel Finish
Body	Brass, Nickel Finish
Pin	Brass, Nickel Finish
Washer	Brass
Insulator	Derlin, White Finish

First Issue	KA	1	24 Oct 07
DESCRIPTION OF REVISION	APPVD	ISS	DATE



Cinch Connectivity Solutions
 7-13 Russel Way,
 Widford Industrial Estate,
 Chelmsford,
 Essex, CM1 3AA, UK
 Tel: +44 (0) 1245 359515
 Fax: +44 (0) 1245 358938

SCALE: Not To Scale

DIMENSIONS: mm

TOLERANCES:
 ± 0.2mm unless
 otherwise stated

DRAWN BY:

K Ager

CHECKED BY:

M Spooner

APPROVED BY:

M Spooner

DATE:

24 Oct 07

TITLE:

**UHF PLUG TO PLUG
 ADAPTOR**

PART NUMBER:

VUA100

PAGE: 1 of 1