

Industrial IoT

IoT PaaS
Software
Marketplace

WISE-PaaS/IoT

Enabling IoT and Industry 4.0 with WebAccess and WISE-PaaS Alliance



ADVANTECH

Enabling an Intelligent Planet

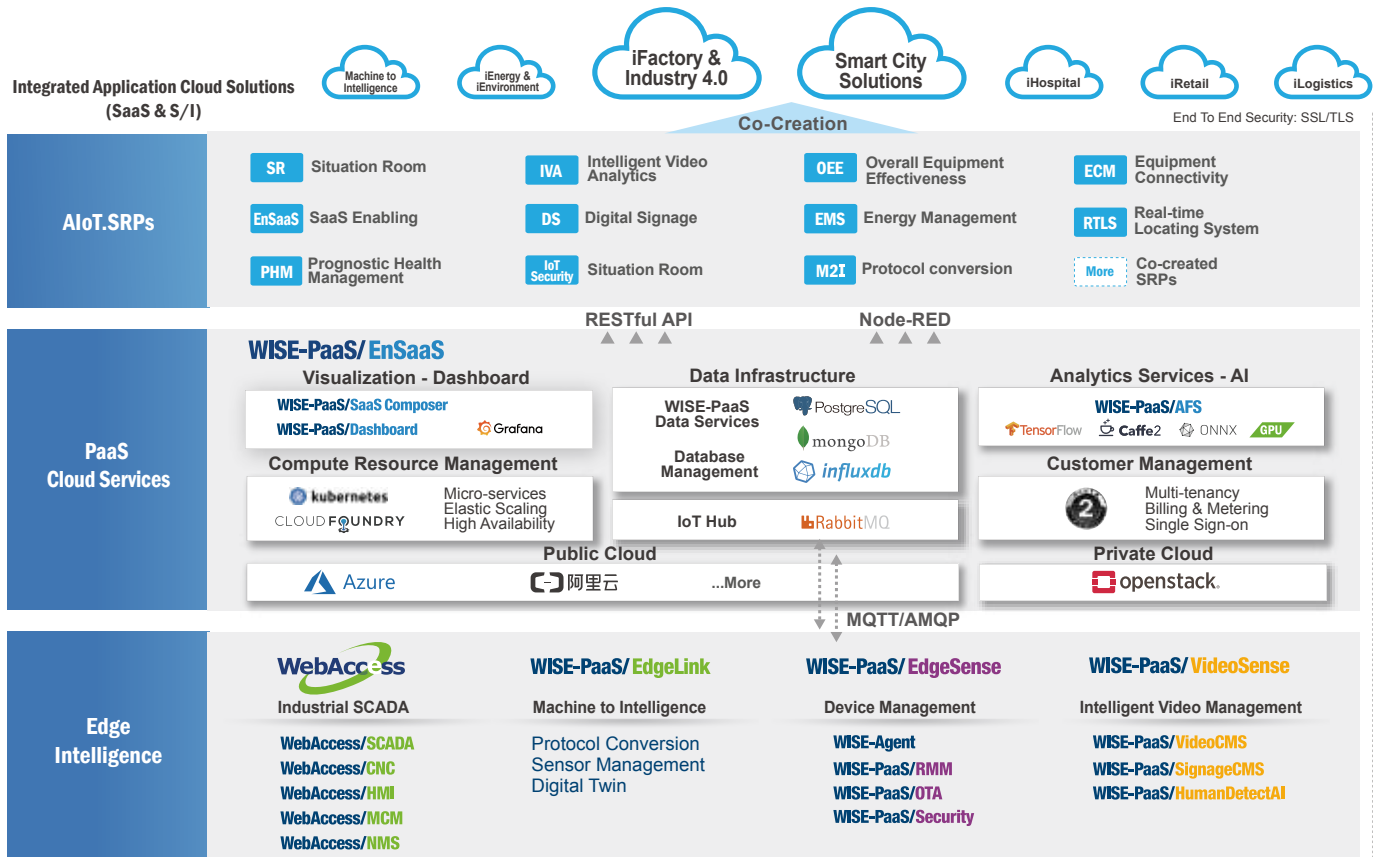


WISE-PaaS
Marketplace

WISE-PaaS Edge Intelligence Platform

Advantech's key strategies for the next decade are to develop sector-focused applications, solution ready platforms (SRPs), and sharing platform business models, with relevant software being a vital component of these developments. Advantech's WISE-PaaS and WebAccess sharing platforms provide comprehensive IoT software ecosystems that include IaaS, PaaS, and SRP APIs. Currently, Microsoft Azure is Advantech's main partner for IaaS as well as PaaS solutions.

Advantech has developed a series of PaaS software packages, such as WebAccess, which includes SCADA solutions. Nonetheless, Advantech recognizes that the sharing economy and relevant software are key drivers for developments in IoT. Thus, Advantech plans to develop and acquire additional software to make the marketplace for WISE-PaaS and WebAccess the world's leading IoT software ecosystem. Advantech also invites third-party software providers to join the WISE-PaaS edge intelligence platform in order to enrich the software offerings and provide a wide range of solutions that satisfy customer needs.



Advantech WISE-PaaS Software Suite

WebAccess/SCADA

- Smart HMI/SCADA**
- 100% Web-based architecture
 - Easily connect to IoT devices
 - Cross-browser HTML5 dashboard support

WebAccess/CNC

- CNC Machine Monitoring Solution**
- CNC overview
 - CNC information
 - CNC alarm

WebAccess/HMI

- HMI Software**
- Programmable logic controller (PLC) driver support
 - Easily integrate protocols
 - Friendly development interface

WebAccess/MCM

- Machine Condition Monitoring Software**
- Oscilloscope
 - Intelligent inspection
 - Condition monitoring

WebAccess/NMS

- Network Management**
- 100% HTML5 Web-based architecture
 - Device connectivity management
 - Integration of network topology

WISE-PaaS/EdgeLink

- Machine to Intelligence Edge Engine**
- Protocol conversion
 - Sensor management
 - Digital twin

WISE-PaaS/SignageCMS

- Interactive Multimedia**
- Server-client architecture
 - Multiscreen display
 - Edit and dispatch programs

WISE-PaaS/Security

- Security Management**
- Central security management
 - Whitelist and threat prevention
 - Global threat intelligence

WISE-PaaS/RMM

- Remote Monitoring and Management**
- Centralized management
 - High availability
 - Sensor/device connectivity

WISE-PaaS/OTA

- Over-the-Air Software Upgrades**
- Centralized update management
 - Upgrade scheduling
 - Rollback support

Advantech WISE-PaaS Alliance and WISE-PaaS/IIoT

Advantech WISE-PaaS Alliance is a market-oriented cooperation model based on Advantech's WISE-PaaS edge intelligence platform while WISE-PaaS/IIoT is one of the two subsidiaries of WISE-PaaS Alliance, based on the WebAccess Industrial IoT software platform, and is designed to connect partners, cultivate the codevelopment of vertical solutions, and encourage strategic comarketing. By providing comprehensive IoT solutions for a diverse range of markets and applications, WISE-PaaS/IIoT can enable partners to expand into various IoT vertical markets. By leveraging the WISE-PaaS/IIoT and WebAccess platform and solutions, partners will be able to shorten their project life cycles through utilizing the integrated solutions, derive competitive advantages through enhanced technical expertise, as well as boost profits and revenues through comarketing activities, thus enabling cross-regional business through Advantech's business network and coverage.

Advantech WISE-PaaS/IIoT Program Highlights



2,000 Points
VIP Membership



Edge Intelligence Platform

Advantech WebAccess is more than just HMI and SCADA software. As the core of Advantech's IIoT software framework, it offers a unified platform with unlimited potential for IIoT applications.



Training and Support

A range of Advantech WebAccess training courses and certification programs are offered at different levels, allowing partners to choose their level of involvement according to their technical needs.



Codevelop SRPs

The WISE-PaaS program provides a high level of expertise in delivering technical support, project consultancy, and SRP value to partners' solutions. Partners are invited to codevelop SRPs.



Sharing Economy

Remarkable connections have been formed to benefit partners, ranging from project referrals and account mapping to sales lead generation, all of which drive business growth.



Comarketing and Promotions

Partners are invited to attend Advantech's WISE-PaaS World Partner Conference (WPC) to receive professional marketing support for cooperative exhibitions, forums, webinars, and public relations.



Community Networking

Partners are invited to participate in WISE-PaaS activities and marketing events and subscribe to the Alliance's email communications and monthly e-newsletters.



Online Visibility

Upon becoming an Alliance member, partners may post their company logo, profile, and application cases on the WISE-PaaS Alliance website, where they can also distribute their press releases.



WISE Points

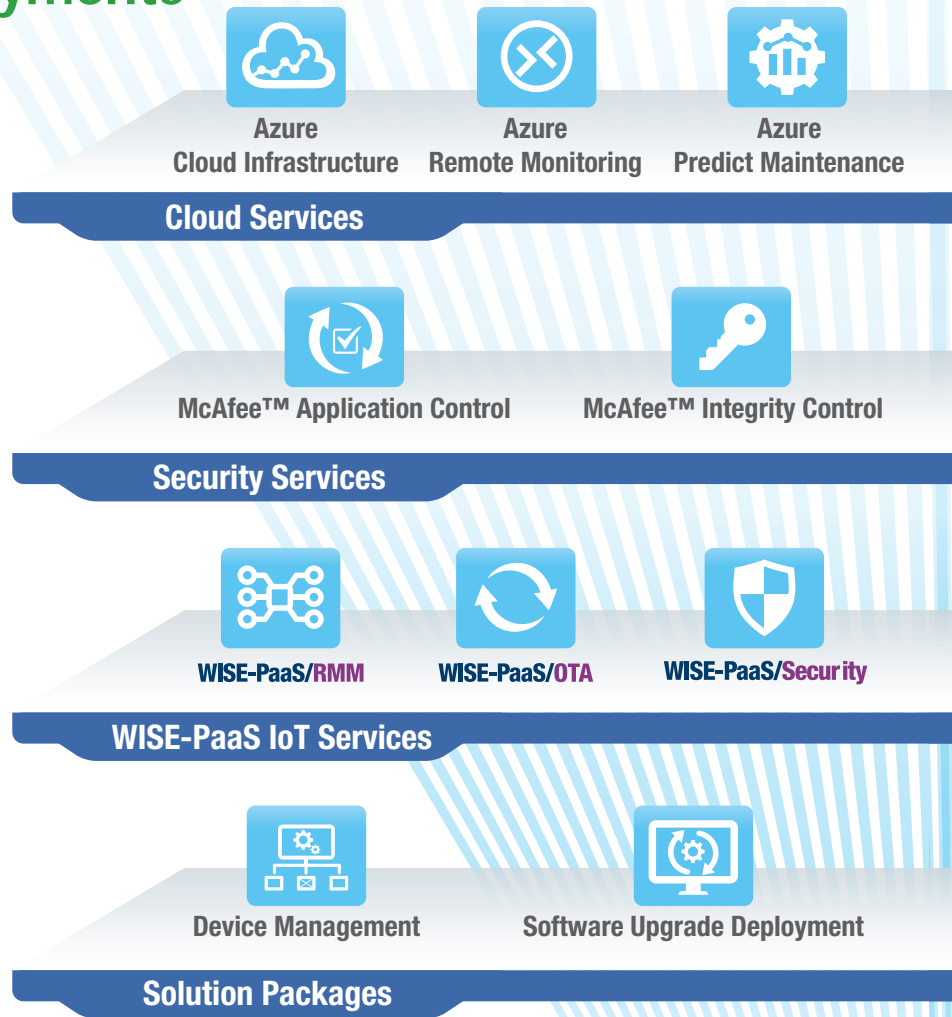
Advantech's online store not only offers a variety of WISE-PaaS IoT software and services but also simplifies the procurement process through the use of WISE Points, Advantech's virtual tokens for redeeming software and service.

Discovering and Shopping for Your Own IoT Deployments

The WISE-PaaS Marketplace is an online software store that features Advantech's exclusive software services, diverse IoT cloud services, IoT security services, WISE-PaaS IoT software services, and pre-packaged solutions on Advantech Edge Intelligence Servers (EISs). The WISE-PaaS Marketplace also integrates IoT partners' cloud and software solutions to accelerate the development of tools for upgrading existing systems to the cloud. Customers can subscribe to WISE-PaaS Marketplace services by using WISE-Points, which come with WISE-PaaS VIP membership packages, to obtain cloud-based software solutions that facilitate IoT innovation.



WISE-PaaS Marketplace



Service Highlights



Solution Incubation
Various WISE-PaaS and WebAccess software and services



Authorized Distribution
Microsoft Azure, Arm Mbed Cloud, McAfee™, and Acronis service resources



Pre-Configured Packages
Integrated cloud, security, and WISE-PaaS software packages that satisfy user needs



Third-Party PaaS Services
Exclusive domain-focused applications for various vertical markets



Cloud Services

Empowered by Microsoft Azure and Arm Mbed Cloud solutions to provide cloud infrastructure and pre-configured services

Security Services

Integrated with McAfee™ and Acronis solutions for secure data transmission and centralized management

WISE-PaaS IoT Services

A diverse range of mature software platform services for various domain-focused solutions aimed at vertical markets

Solution Packages

Pre-configured solution packages featuring cloud, security, and WISE-PaaS IoT services for each domain-focused EIS solution

Ecosystem Co-Prosperity



Service Exposure

Sell your IoT solutions and services on the WISE-PaaS Marketplace



Business Expansion

More sales opportunities will be opened and shared on the Marketplace



Profit Sharing

Marketplace service providers can maximize returns with perpetual and subscription business models



Quick and Simple Deployment

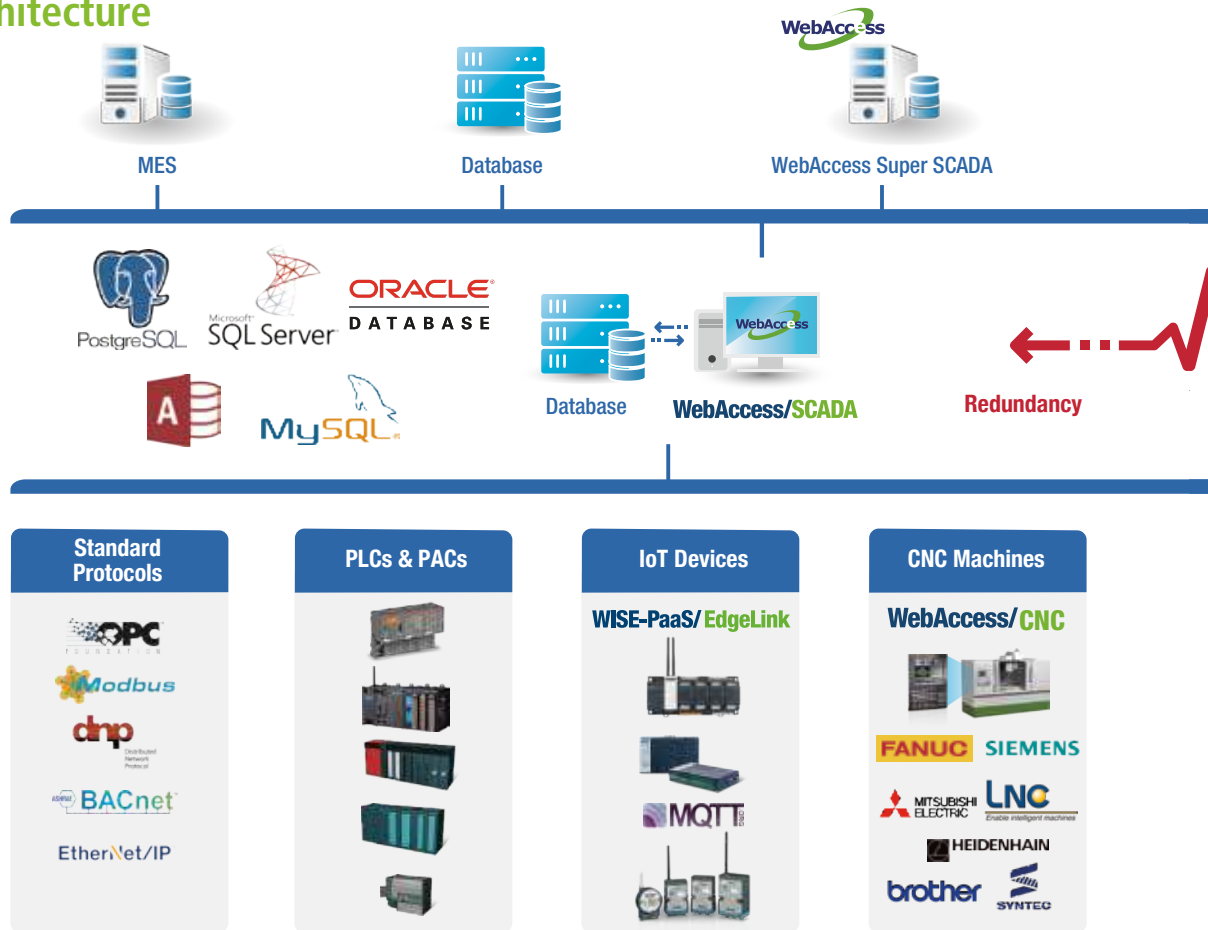
Purchase and deploy solutions from the Marketplace with a simple 3-step process

WebAccess/SCADA IoT Application Software Framework

WebAccess/SCADA is the core of Advantech's IIoT application platforms. It not only offers ecopartners and system integrators a human-machine interface (HMI) and supervisory control and data acquisition (SCADA) software, but also serves as an IIoT platform and edge computing gateway solution.

With 100% web-based architecture, users can develop unique vertical applications and monitor projects using a standard web browser. For the IIoT device layer, WebAccess/SCADA supports numerous protocols and drivers to enable connecting to over 450 controllers and devices, making it suitable for various IIoT applications and projects.

Software Architecture

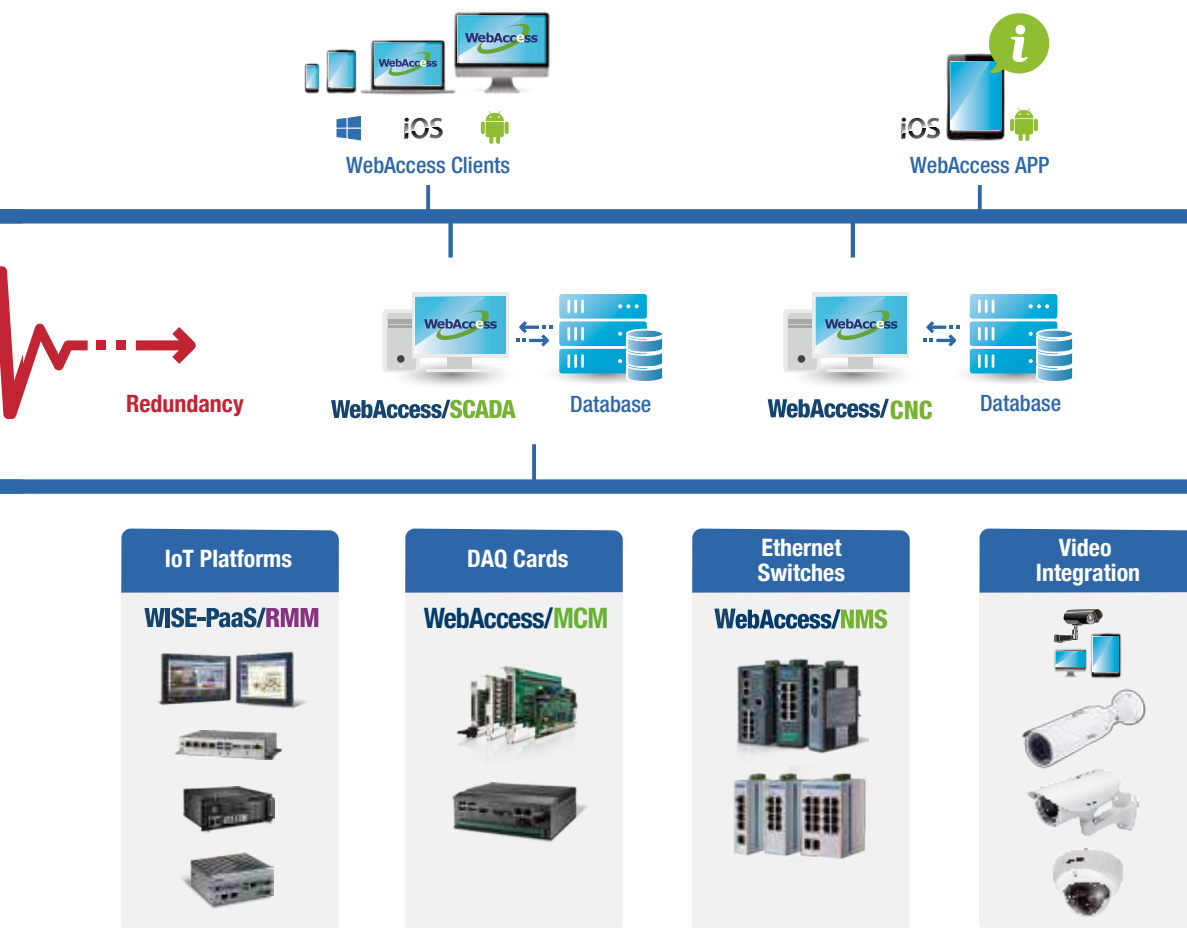


Feature Highlights

- 100% Web-Based Architecture
- Networking Capability
- Support for Many Protocols
- MQTT with Plug & Play
- Video Management
- Integration with RMM
- Integration with NMS
- Redundancy
- Super SCADA
- RTDB
- Open Database Connectivity
- OPC DA/UA Server & Client
- Modbus Server
- Open Interface

In addition to conventional SCADA functions, WebAccess/SCADA has an intelligent dashboard that provides users with cross-platform and cross-browser data analysis tools via an HTML5-based user interface. In addition to built-in widgets, WebAccess/SCADA also comes with Widget Builder, which enables customers to build their own widgets. With improved functionality, Dashboard 2.0 allows widgets to display data from both WebAccess/SCADA and external databases.

Acting as an edge computing gateway, WebAccess/SCADA collects volumes of data from ground equipment and then transfers the data to cloud applications via MQTT using the publish-subscribe messaging pattern. The software also provides fundamental IoT data collection and management tools with its open architecture and open interfaces, which are helpful for developing different vertical applications.



- Dashboard**
- Widget Builder**
- Trend Analysis**
- Excel Report**
- Alarm Management**
- Google/Baidu Map Integration**
- WebAccess APP Integration**
- Electronic Signature for 21 CFR Part 11**
- User Management**
- Schedule**
- Recipe**
- Demand Control**
- Multiple Instances**
- Multitouch**

WebAccess/CNC

CNC Machine Monitoring Solution

Advantech WebAccess/CNC is a core software solution for networking computer numerical controller (CNC) machines. Leveraging the 100% web-based architecture of the WebAccess/SCADA platform, WebAccess/CNC provides not only crucial CNC networking functions but also the benefits of SCADA software for CNC machining. With the inclusion of I/O device monitoring capabilities, WebAccess/CNC enables CNC information management and status visualization. Internet Explorer (IE) can be used to browse SCADA web pages and monitor/capture real-time CNC and production status data to improve efficiency and analyze device availability. Designed specifically for the machine tool market, WebAccess/CNC comes with numerous SCADA drivers and can support a wide range of CNC, I/O, and PLC devices to facilitate equipment data collection and industrial networking application development.

Software Architecture



Feature Highlights

CNC Overview
 Gives users an overview of real-time connectivity, operating mode, CNC status, alarms, and machine availability data.

CNC Information
 Provides machine coordination, operation, G code, and spindle information.

CNC Availability
 Provides CNC availability details for the purpose of improving production efficiency.

Alarm & Operations Data
 Provides historical data of alarms and CNC operations to facilitate machine maintenance.

CNC Program Management
 Features a transfer function for NC files and an editing tool for file programming.

Parameter Configuration
 Features a configuration interface for modifying coordinate and tool compensation parameters.

Servo Spin
 Enables real-time monitoring of spindle load to facilitate analysis of machine wear and damage.

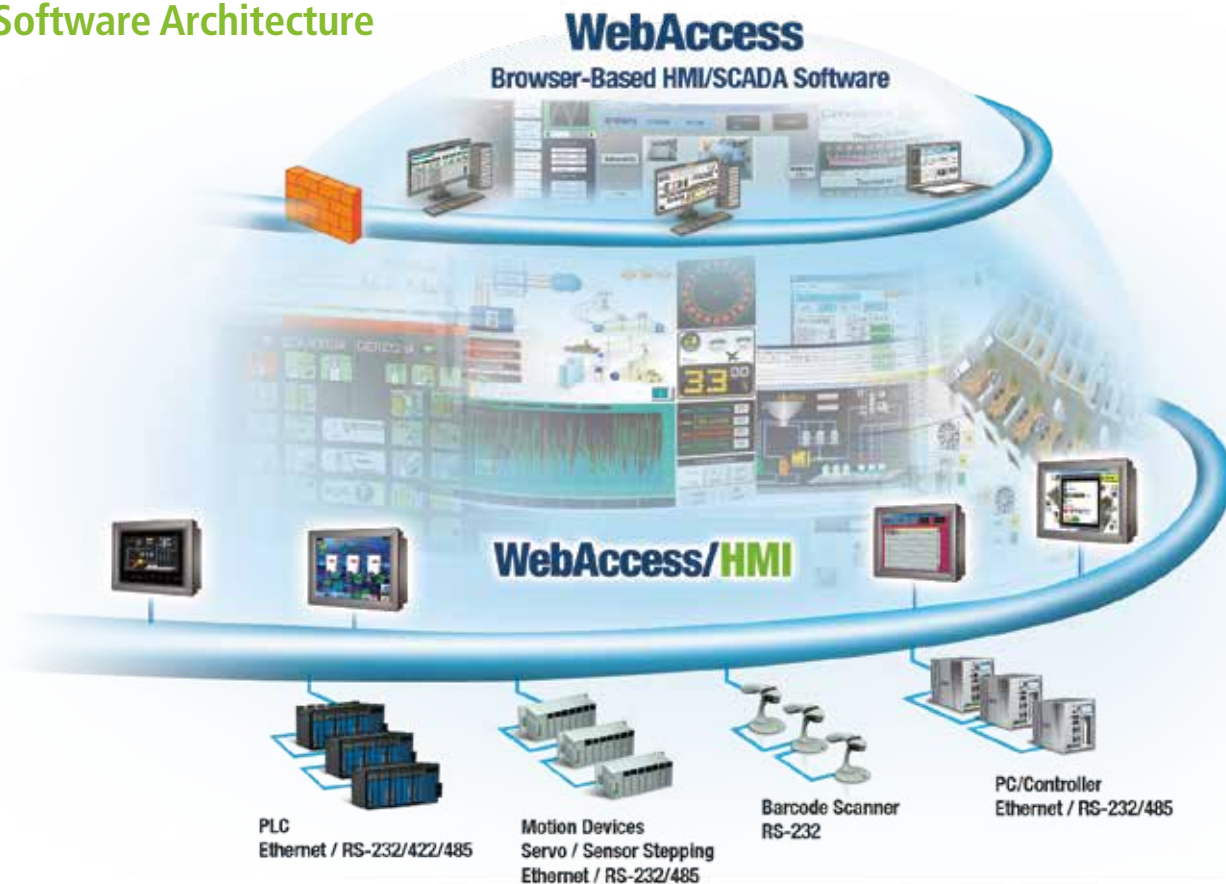
Maintenance
 Features a maintenance configuration interface for preventive machine maintenance.

WebAccess/HMI

HMI Runtime Development Software

Advantech WebAccess/HMI is powerful yet intuitive software for developing comprehensive HMI solutions. The ease of integration makes WebAccess/HMI suitable for various application fields. WebAccess/HMI features utility programs, such as a recipe editor, text editor, and data transfer helper, and it supports solution-oriented screen objects, high-end vector graphics, data and operation logging, online/offline simulations, and Microsoft Windows fonts for multilanguage applications. Included in the WebAccess/HMI package is an HMI runtime engine that guarantees reliable open platform performance with minimal system overheads, high data communication rates, subsecond screen switching, and 24/7 operation.

Software Architecture



Feature Highlights



Smart Screen Management

- Shows application screen numbers and names as traditional text or thumbnails
- Screens can be selected from the list for editing, cutting, copying, deleting, or exporting



Project-Based Management for Multiple Applications

- The project tree provides comprehensive functionality for project management
- Global settings and resources are sharable to all applications in a project



Software Support for a Range of Machines

- 4 communication links with the option to add more RS-485 and TCP/IP
- 1 startup macro, 1 main macro, 4 event macros, 4 time macros, no limitation on other macro types



Efficient Tools for Easier Design Customization

- Real-time WYSIWYG makes changes to objects instantly viewable
- Semitransparent dialog boxes ensure that on-screen objects are visible



Boost Performance With Simulations

- Offline simulation function allows users to experience their design before deciding to purchase a model
- Communication performance can be evaluated using an online simulation prior to installation



Enhanced Data Security

- Project files, global macros, and password tables can be protected with different passwords
- Copying and uploading of an application can be prohibited in advance

WebAccess/MCM

Machine Condition Monitoring (MCM) Software

WebAccess/MCM software is designed for easy sensor signal acquisition, signal analysis, feature extraction, data management/interpretation, and alerts regarding the status of machines. Engineers and system integrators can configure settings according to the needs of different applications. The software assists customers in quickly installing Advantech's DAQ modules and implementing predictive maintenance in their factories. This helps improve equipment uptime, performance, and safety, while greatly reducing maintenance costs.

Software Architecture



Feature Highlights



No Coding Required
Reduces investment in development resources and accelerates new project implementation.



Feature Extraction
Various functions for extracting features such as Crest factor, Kurtosis, Skewness, Harmonic, Shape Factor, Impulse Factor, and Clearance Factor.



Data Preprocessing
Preprocessing functions such as moving average, window functions, linear filters, and frequency-domain filters.



Data Logger
Data storage, data searches, comparisons, and playback display functions.



IIoT Cloud Connectivity
Supports Ethernet communication protocols such as Modbus and MQTT for uploading data to an IIoT cloud.



Simultaneous Remote and Local Operations
Data analysis tools can be accessed remotely or locally.



Interpretation and Output
Simple configurations are provided for mathematical, bitwise, and logical operations, the results of which are used to generate decision trees.



Spectrum Analyzer
View time and frequency-domain analysis diagrams in real time and use the analysis tool to identify key features.

WebAccess/NMS

Network Management System

Advantech WebAccess/NMS is a browser-based application that serves as an NMS for monitoring, configuring, and maintaining devices via IP-based networks. WebAccess/NMS includes device, alarm, efficiency, topology, and system management functions, and it supports SNMP and ICMP communication protocols, thus enabling the management of all Ethernet-enabled Advantech products in addition to a variety of third-party devices. By offering a user-friendly platform for remote network monitoring and management, WebAccess/NMS facilitates centralized network management.

| Software Architecture

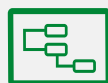


| Feature Highlights



Google Maps

Hardware can be located using Google Maps and OpenStreetMaps. The location and connectivity are presented clearly on the map.



Hierarchical Architecture

CMSs gather device information from the EMS.



Remote Desktop

Supports HTML5-based remote desktop functions, providing additional flexibility for system administrators.



Dashboard

100% web-based HTML5 NMS with networking software architecture, which can be run on any compatible web browser on any device.



Remote Configuration

Device configuration can be performed by simply clicking on a device to access the corresponding device configuration web page, or by using Telnet/SSH command lines.



Alarm Playback

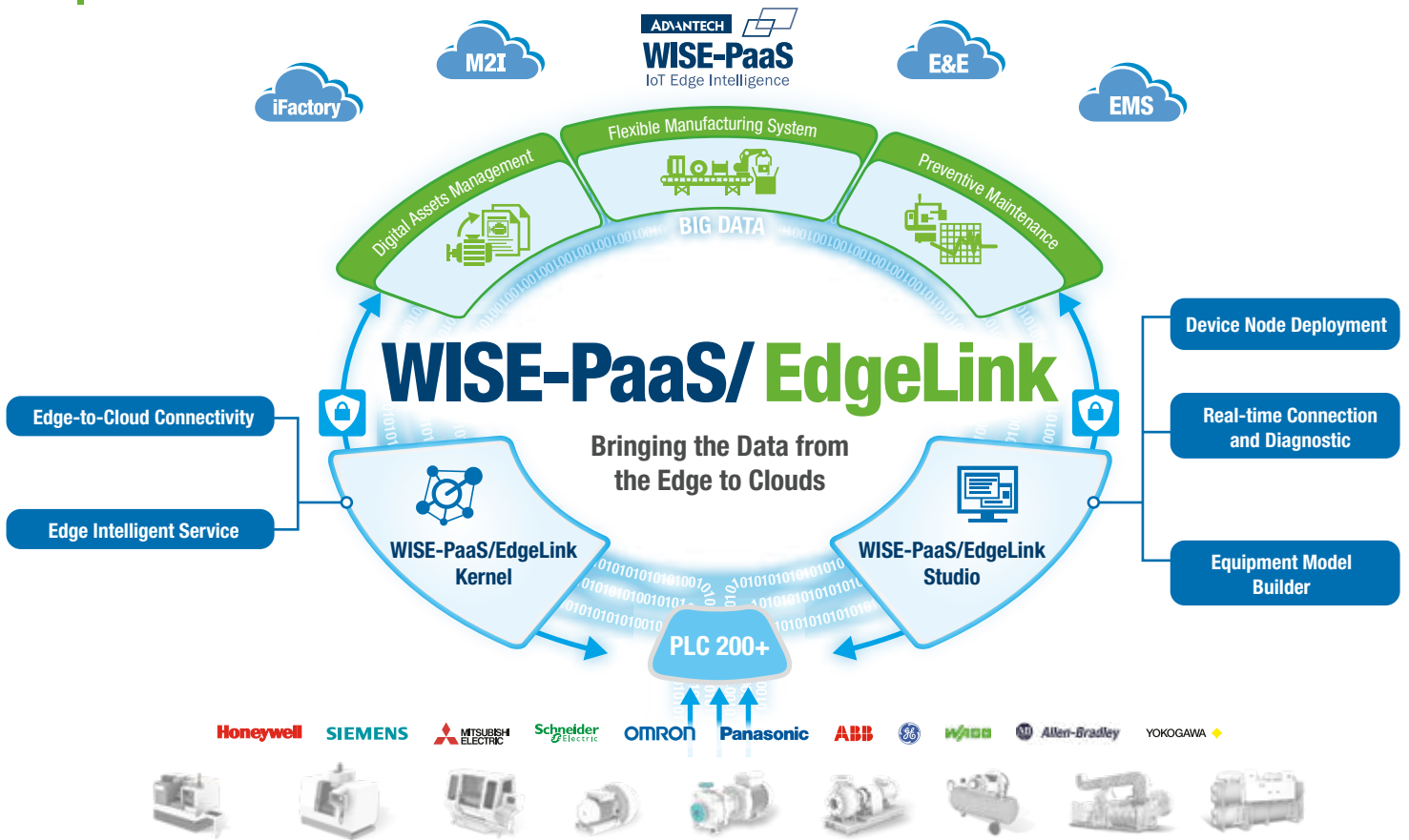
Replaying a historical trap or event facilitates troubleshooting to identify the root cause. The playback aligns with the topology diagram.

WISE-PaaS/EdgeLink

Machine-to-Intelligence Edge Engine

Developments in IoT are leading management teams to seek new ways to raise customer satisfaction by optimizing production output and raising service levels. This means that even more equipment is to be connected, more data need to be analyzed, and both the volume and diversity of such data from different equipment are also increasing. WISE-PaaS/EdgeLink is equipped key functionalities specifically designed for edge applications. The technology includes a runtime kernel and a user interface – “WISE-PaaS/EdgeLink Studio.” With the integrated abilities of data acquisition from field equipment in addition to connectivity, security, and intelligent functionalities, integrating and sending field data to the cloud are made easier.

Software Architecture



Feature Highlights



- Edge-to-Cloud Connectivity**
- 500+ device connections
 - Cloud agent
 - Private service agent
 - Data store and forward



- Device Node Deployment**
- Project import and export
 - User-friendly user interface
 - Easy mass deployment



- Equipment Model Builder**
- Plug and play
 - Built-in versatile equipment nodes and model
 - Customizable equipment builder



- Edge Intelligence Service**
- Intelligent service
 - Data pretreatment
 - Event manager
 - Data transmission security
 - Local data buffer



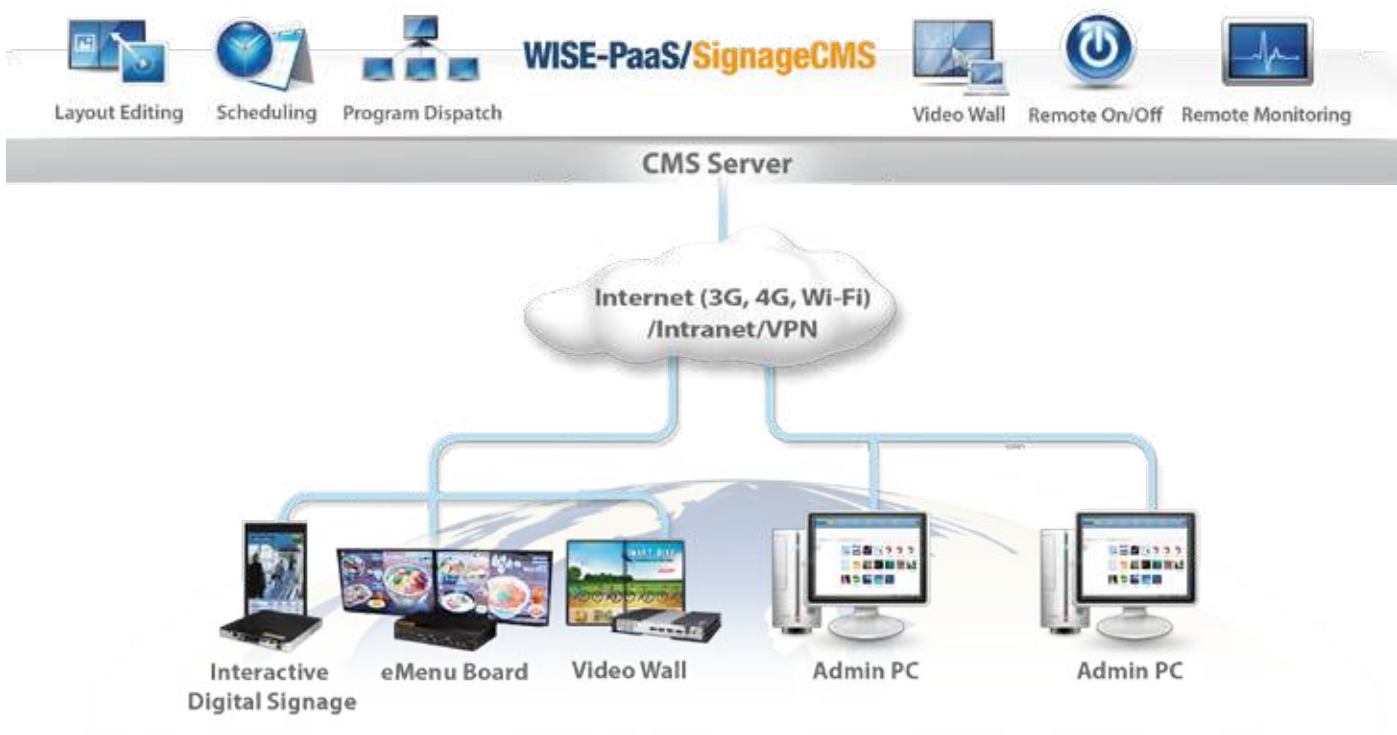
- Real-Time Connection and Diagnostics**
- Network status and data quality diagnostic
 - Fast sync with field equipment

WISE-PaaS/SignageCMS

Interactive Multimedia Management Services

WISE-PaaS/SignageCMS is an intelligent digital signage software package featuring a web-based architecture. It allows users to layout, schedule, and dispatch signage content over the Internet to up to 500 remote display clients. In addition to supporting over 30 media formats, WISE-PaaS/SignageCMS enables editing and dispatching content programs in only 3 easy steps. It also offers content managers a digital communication platform for broadcasting dynamic visual content aimed at increasing audience engagement and interaction, positively influencing purchase decisions, and generating additional business opportunities.

Software Architecture

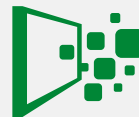


Feature Highlights



Web-Based Management

- Remote editing and dispatch programs up to 500 clients
- Remote monitoring and reporting
- Supports public/private LAN configurations



Supports 30+ Media Formats

- TV/web page/Flash/PPT/scrolling text
- Image: JPG/GIF/BMP/PNG
- Video/Audio: MPEG/AVI/WMV/WM/MP3/FLV



User-Friendly Interface

- Visualization interface
- Drag and drop operation
- Multi-Display support: distinct/clone/extended mode



System Backups and Restore

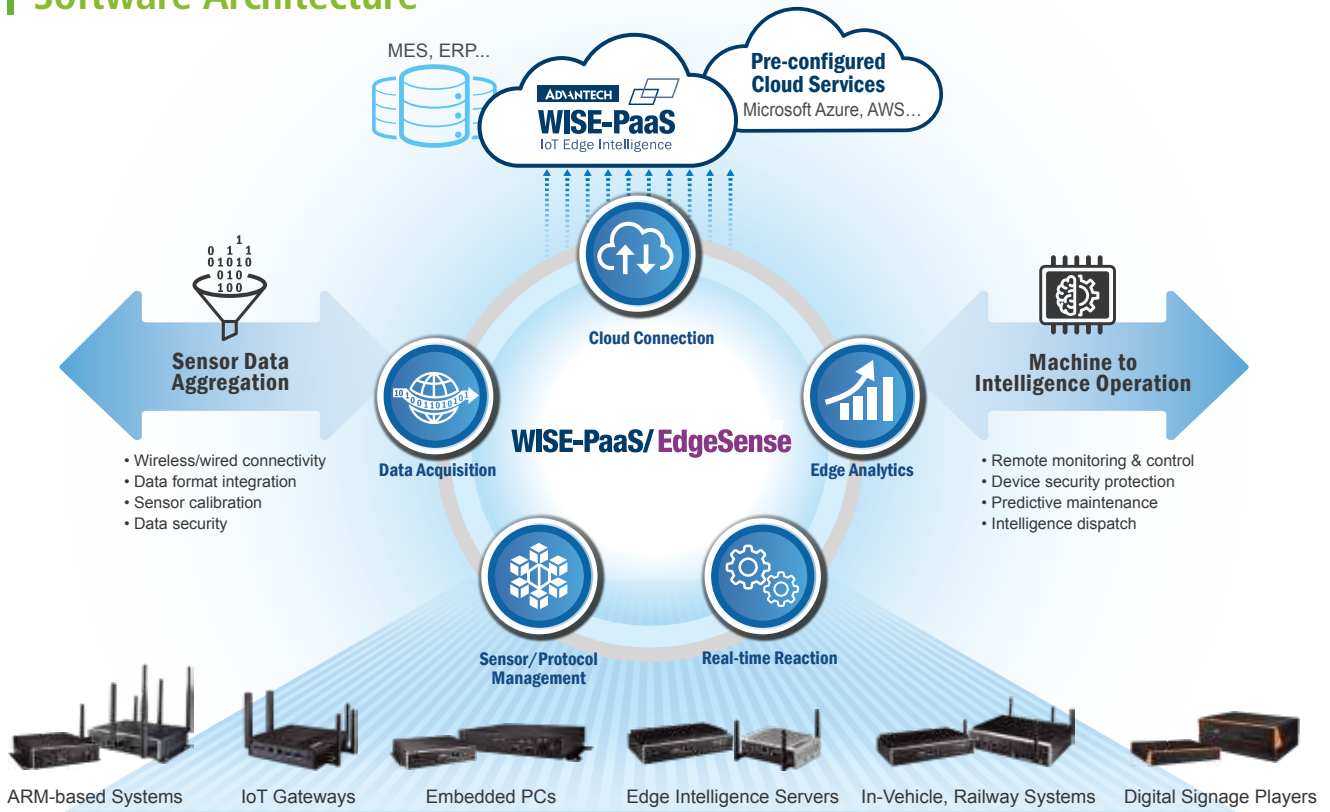
- Provides multimedia file backups
- Provides system setting and program data backups
- Supports one-click configuration and data restore

Enabling IoT Sensing, Edge Intelligence and Cloud Integration

WISE-PaaS/EdgeSense

WISE-PaaS/EdgeSense is an integrated software solution that incorporates sensor data aggregation, over-the-air software-in-time updates, edge analytics, cloud applications, and secure end-to-end data protection for real-time device-to-cloud operational intelligence.

Software Architecture



Feature Highlights



WISE-PaaS/WISE Agent Edge Intelligence Interface

- Open and standard framework for IoT connectivity
- Default plug-in offering for standard protocols
- Software SDK for legacy or proprietary equipment support
- Multi-cloud integration for WISE-PaaS/EnSaaS, Microsoft Azure, and Arm Mbed



WISE-PaaS/RMM IoT Device Remote Monitor and Management

- Remote device/group/map view management
- Data acquisition from devices and equipment
- Data visualization with Grafana and Freeboard-based dashboard user interface
- Event search and notification per account attribute
- High scalability



WISE-PaaS/OTA Over-the-Air Software Updates

- Centralized remote application and firmware updates
- Download and deploy scheduling for planned upgrades
- Supports rollback to a previous configuration for exceptions
- Scripting upgrades for greater update flexibility



WISE-PaaS/Security Whitelisting & Application Control

- Centralized security management
- Flexible security modules for various vertical applications
- Real-time threat protection against malware
- Simplified dashboard for analytical reporting

Enabling IoT Solution Co-Creation with the WISE-PaaS VIP Program



Product Ordering Information (Industrial IoT)

WebAccess/SCADA 8.3 Professional Version
Smart HMI/SCADA
WebAccess/SCADA

Part Number	Product	WISE Points (Regular)
WA-P83-U075E	WebAccess Professional 8.3 : 75 I/O, 75 internal tags	36
WA-P83-U150E	WebAccess Professional 8.3 : 150 I/O, 150 internal tags	53
WA-P83-U300E	WebAccess Professional 8.3 : 300 I/O, 300 internal tags	94
WA-P83-U600E	WebAccess Professional 8.3 : 600 I/O, 600 internal tags	152
WA-P83-U15HE	WebAccess Professional 8.3 : 1500 I/O, 1500 internal tags	211
WA-P83-U50HE	WebAccess Professional 8.3 : 5,000 I/O, 5000 internal tags	316
WA-P83-U20KE	WebAccess Professional 8.3 : 20,000 I/O, 20000 internal tags	421
WA-P83-U64KE	WebAccess Professional 8.3 : Unlimited I/O, unlimited internal tags	526

WebAccess/SCADA 8.3 Professional Upgrade
Smart HMI/SCADA
WebAccess/SCADA

Part Number	Product	WISE Points (Regular)
WA-X83-U000E	WebAccess Version Upgrade, from 7.x to 8.3	2
WA-X83-U075E	WebAccess software license, 75 tags upgrade	22
WA-X83-U300E	WebAccess software license, 300 tags upgrade	66
WA-X83-U600E	WebAccess software license, 600 tags upgrade	123
WA-X83-U15HE	WebAccess software license, 1,500 tags upgrade	178
WA-X83-U50HE	WebAccess software license, 5,000 tags upgrade	275

WebAccess/HMI
HMI Runtime
Development Software
WebAccess/HMI

Part Number	Product	WISE Points (Regular)
968WH021P0	WebAccess/HMI V2.1 150 tags S/W license	14
968WH021P1	WebAccess/HMI V2.1 300 tags S/W license	23
968WH021P2	WebAccess/HMI V2.1 1500 tags S/W license	34
968WH021P3	WebAccess/HMI V2.1 5000 tags S/W license	89
WA-H21-U99HE	WebAccess/HMI V2.1 9990 Tags with USB Dongle	133

WebAccess/CNC

CNC Machine Monitoring Solution

WebAccess/CNC

Part Number	Product	WISE Points
WebAccess/CNC (Runtime): Support FANUC, MITSUBISHI, SIEMENS, HEIDENHAIN		
WA-CNC-U001E	75 I/O tags, 1 CNC machine connections	VIP Members Only
WA-CNC-U005E	75 I/O tags, 5 CNC machine connections	
WA-CNC-U010E	75 I/O tags, 10 CNC machine connections	
WA-CNC-U020E	75 I/O tags, 20 CNC machine connections	
WA-CNC-X005E	5 CNC machine connections upgrade	
WA-CNC-X010E	10 CNC machine connections upgrade	
WebAccess/CNC (Driver): Support BROTHER		
WA-BRO-U001E	75 I/O tags, 1 CNC machine connections	VIP Members Only
WA-BRO-U005E	75 I/O tags, 5 CNC machine connections	
WA-BRO-U025E	75 I/O tags, 25 CNC machine connections	
WA-BRO-U050E	75 I/O tags, 50 CNC machine connections	
WA-BRO-X001E	1 CNC machine connections upgrade	
WA-BRO-X005E	5 CNC machine connections upgrade	
WA-BRO-X025E	25 CNC machine connections upgrade	

WebAccess/NMS

Network Management

WebAccess/NMS

Part Number	Product	WISE Points (Regular)
NMS-U050-ULE	WebAccess/NMS Professional Software with 50 nodes	54
NMS-U100-ULE	WebAccess/NMS Professional Software with 100 nodes	74
NMS-U300-ULE	WebAccess/NMS Professional Software with 300 nodes	135
NMS-U500-ULE	WebAccess/NMS Professional Software with 500 nodes	240
NMS-U01K-ULE	WebAccess/NMS Professional Software with 1,000 nodes	300
NMS-U04K-ULE	WebAccess/NMS Professional Software with 4,000 nodes	635

WISE-PaaS/SignageCMS

Interactive Multimedia

WISE-PaaS/SignageCMS

Part Number	Product	WISE Points (Regular)
AIS-PNWS-FE	WISE-PaaS/SignageCMS 1 Server license	16
AIS-PNWC-FE	WISE-PaaS/SignageCMS 1 Client license	16

Product Ordering Information (Embedded IoT)

WISE-PaaS/RMM

Remote Monitoring and Management

WISE-PaaS/RMM

Part Number	Product	WISE Points (Perpetual)
32EMRMP31B	WISE-PaaS/RMM Pro (Max 10 devices)	41
32EMRMP31C	WISE-PaaS/RMM Pro (Max 50 devices)	189
32EMRMP31D	WISE-PaaS/RMM Pro (Max 200 devices)	720
32EMRMP31E	WISE-PaaS/RMM Pro (Site License)	1,800
9806WSCC01	WISE-PaaS/RMM Design-in Service(10 hours)	100

WISE-PaaS/OTA

Over-the-air Remote Software Upgrade

WISE-PaaS/OTA

Part Number	Product	WISE Points (Perpetual)
32EMOTAP2B	WISE-PaaS/OTA Pro(Max 100 devices)	8
32EMOTAP2C	WISE-PaaS/OTA Pro(Max 500 devices)	36

WISE-PaaS/Security

Centralized Security Management

WISE-PaaS/Security

Part Number	Product	WISE Points (Perpetual)
31WPSEPO01	ePolicy Orchestrator(ePO)	0

McAfee™

Embedded Security and Endpoint Protection



Part Number	Product	WISE Points (Perpetual)
9806WMSMP0	Centralized Security Deployment Package	30
9806WMSMS0	Device Management & Security Package	40
9806WMDMP0	Device Management Package (Max 100 devices)	40
31WPSMAP01	Application Control with ePO	3
31WPSMIC01	Integrity Control	15
31WPSMES0A	Endpoint Security	3
31WPSMAC01	Application Control	2
31WPSMEC01	Embedded Control	6

Acronis

System Backup and Recovery

Acronis

Part Number	Product	WISE Points (Perpetual)
31WPSALO16	True Image 2016 Personal	1
31WPSAMO16	True Image 2016 Full	3

Microsoft AzureAzure Cloud
Platform Services

Part Number	Product	WISE Points (Monthly Subscription)
9806AZUREA	Azure Cloud Infra. Standard (Windows)	10 (50 devices)
9806AZUREB	Azure Cloud Intra. Advanced (Windows)	30 (100 devices)
9806AZUREC	Azure Cloud Infra. Premier (Windows)	100 (500 devices)

Arm Mbed CloudCentralized IoT Management
From Sensor to Cloud

Part Number	Product	WISE Points (Monthly Subscription)
9806WMMBC0	Arm Device Management (max 100 devices)	3
9806WMMBP0	Arm End-to-end Security (max 100 devices)	4
9806WMMBU0	Arm Software Update (max 100 devices)	5

Pre-Configured

Solution Packages

Part Number	Product	WISE Points (Monthly Subscription)
9806WMDMP0	Device Management Package	40(100 devices)
9806WMUMP0	Software Upgrade Deployment Package	35(500 devices)
9806WMDMS0	Device Management & Security Package	40(100 devices)
9806WMSMP0	Centralized Security Deployment Package	30

Protocol ConverterAll-in-one Message
Broker Service

Part Number	Product	WISE Points (Perpetual)
9806WPPC1M	Protocol Connector V1	0

WISE-PaaS/EnSaaSPlatform for IoT Cloud
Services

Part Number	Product	WISE-Points(Subscription)
9806WPENL0	Economic Service package	100
9806WPENM0	Value Service package	29
9806WPENS0	Entry Service package	8
9806WPRM01	WISE-PaaS/RMM (Max 10 devices)	1
9806WPRM0A	WISE-PaaS/RMM (Max 100 devices)	4
9806WPRM5A	WISE-PaaS/RMM (Max 500 devices)	18
9806WAC010	WebAccess/SCADA (Max 1,000 tags)	1
9806WAC050	WebAccess/SCADA (Max 5,000 tags)	3
9806WAC100	WebAccess/SCADA (Max 10,000 tags)	5
9806WAC500	WebAccess/SCADA (Max 50,000 tags)	18
9806WPVC08	WISE-PaaS/VideoCMS (Max 8CH)	8
9806WPVC32	WISE-PaaS/VideoCMS (Max 32CH)	14