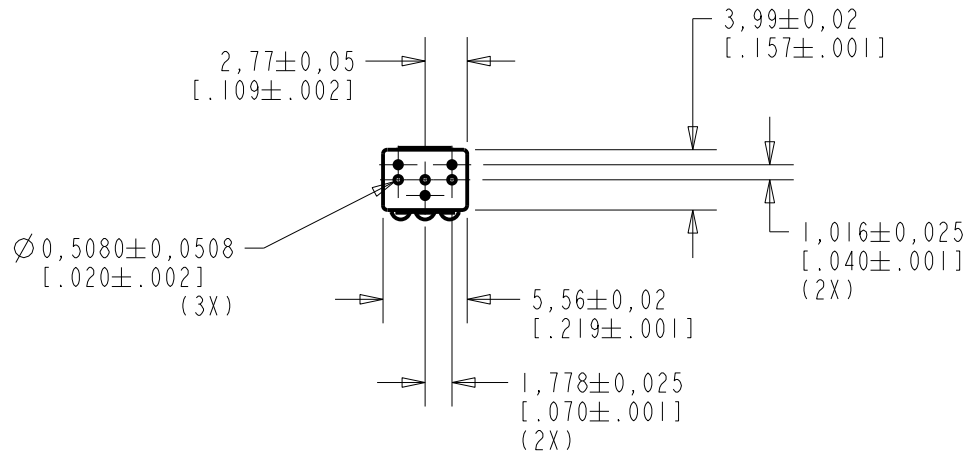
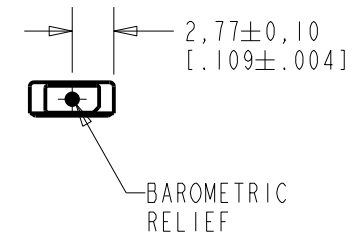
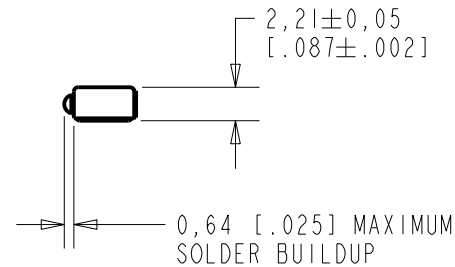
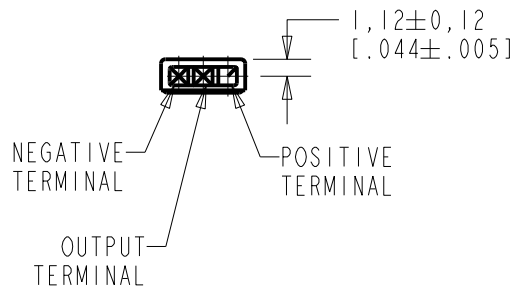


WP-30113-000
SHT 1.1



NOTE:

1. INCREASED PRESSURE AT THE SOUND INLET CAUSES A POSITIVE GOING VOLTAGE TO APPEAR AT THE OUTPUT TERMINAL, RELATIVE TO THE NEGATIVE TERMINAL.



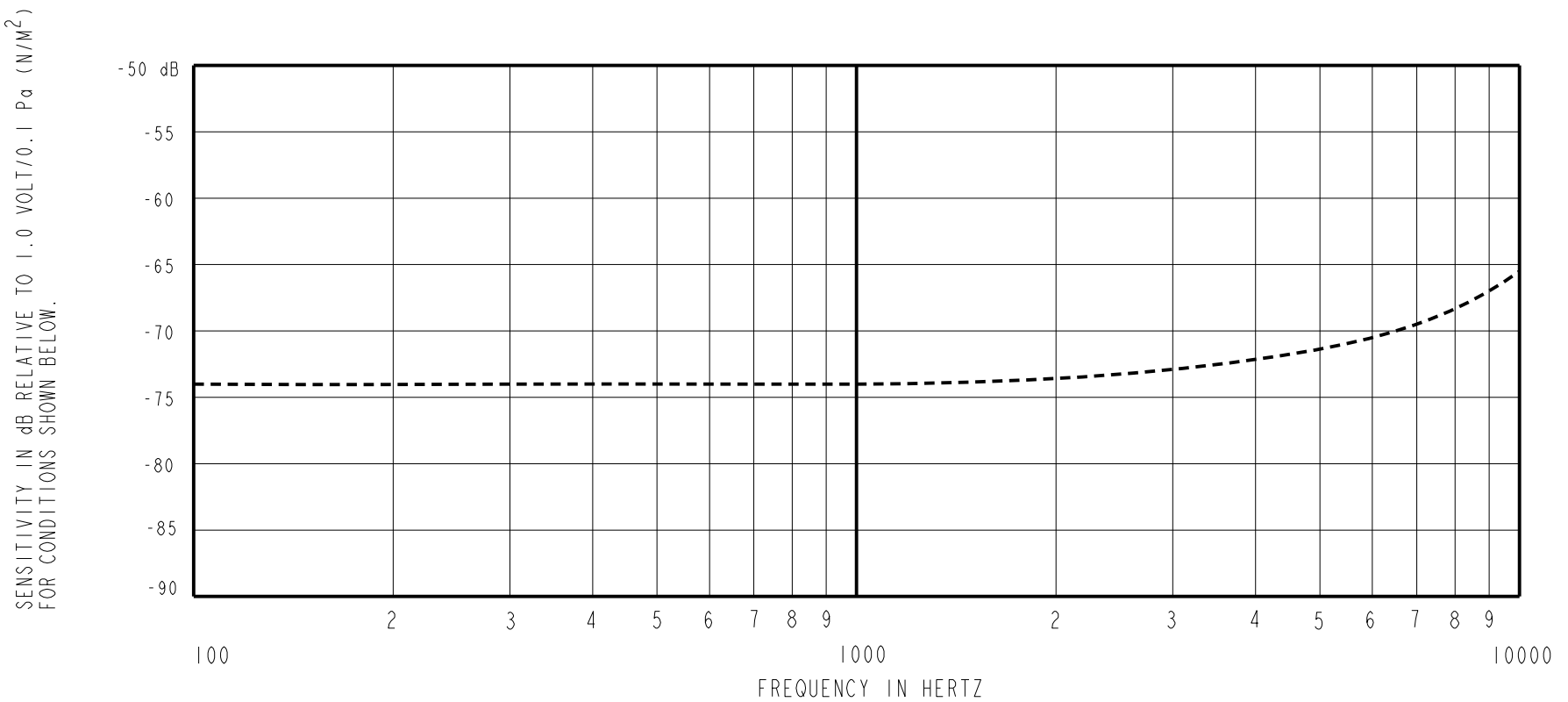
NOMINAL WEIGHT
.13 GRAM

DIMENSIONS IN MILLIMETERS [INCHES]

Revision	C.O. #	Implementation Date	RELEASE LEVEL	REVISION
B	MI0104515	3-21-12	Active	B
A	MI0101516	7-11-07		

SCALE: 2:1		DR. BY: LSY	DATE: 7-11-07
DO NOT SCALE DRAWING			
TITLE: MICROPHONE		WP-30113-000	
OUTLINE DRAWING		SHT 1.1	
		APP. BY: GJP	DATE: 7-16-07
		GJP	7-16-07

KNOWLES ELECTRONICS
ITASCA, ILLINOIS U.S.A.

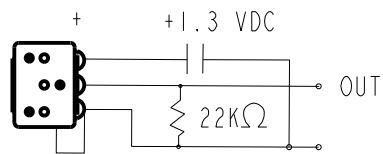


FREQUENCY	SENSITIVITY			DEVICE CONFORMITY	
	MIN.	NOM.	MAX.	RANGE OF DEVIATION FROM 1KHz	
100	---	-74.0	---	-4.0	+4.0
1000	-77.0	-74.0	-71.0	0.0	0.0
10000	---	-65.5	---	-4.5	-12.5

NOTES:

- ALL TEST DATA TAKEN WITH TEST CIRCUIT SHOWN BELOW.
- CASE CONNECTED TO NEGATIVE TERMINAL USING EXTERNAL JUMPER WIRE.
- MICROPHONE TO BE FUNCTIONAL WITH 10 VDC SUPPLY.
- CONFORMS TO REQUIREMENTS SHOWN ON 'ELECTRET MICROPHONE ENVIRONMENTAL QUALIFICATIONS TEST, EK-PA SHEET 2.2' WITH REF. FREQ. OF 1000 Hz.
- TYPICAL SENSITIVITY TO HUMIDITY AT 1000 Hz IS 0.02 dB/%RH.
- SENSITIVITY AND NOISE VALUES INDICATED ON THIS SPECIFICATION ARE VALID AT 50% HUMIDITY.

PORT LOCATION	DC SUPPLY	AMPLIFIER CURRENT DRAIN	SENSITIVITY CHANGE ON REDUCING SUPPLY TO 0.9VDC	"A" WEIGHTED NOISE (1 kHz EQUIV. SPL)
KA	1.3V	50uA MAX.	4.0 dB MAX.	40.0 dB MAX.



TEST CIRCUIT

Revision	C.O. #	Implementation Date	RELEASE LEVEL	REVISION
B	M10104515	3-21-12	Active	B
A	M10101516	7-11-07		

KNOWLES ELECTRONICS ITASCA, ILLINOIS U.S.A.	WHEN TEST LIMITS ARE USED TO ESTABLISH INCOMING INSPECTION ACCEPTANCE/REJECTION CRITERIA, CORRELATION OF TEST EQUIPMENT WITH KNOWLES IS ALSO REQUIRED FOR ELIMINATION OF EQUIPMENT AND TEST METHOD VARIATION	DR. BY LSY	DATE 7-11-07	
	TITLE: MICROPHONE PERFORMANCE SPECIFICATION	WP-30113-000 SHT 2.1	CK. BY GJP	DATE 7-16-07
			APP. BY GJP	DATE 7-16-07