



LTCC SMT

Band Pass Filter

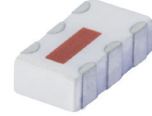
BFCN-2900+

Mini-Circuits

50Ω 2700 to 3100 MHz

THE BIG DEAL

- Good Rejection, 25 dB Typ.
- 1206 Surface Mount Footprint
- Power Handling: 1.5 Watts



Generic photo used for illustration purposes only

CASE STYLE: FV1206-1

+RoHS Compliant

The +Suffix identifies RoHS Compliance. See our website for methodologies and qualifications

APPLICATIONS

- Harmonic Rejection
- Transmitters / Receivers

PRODUCT OVERVIEW

Mini-Circuits' BFCN-2900+ LTCC Band Pass Filter is constructed with multiple layers in order to achieve a miniature size and high repeatability of performance. Wrap-around terminations minimize variations in performance due to parasitics. Covering 400 MHz passband, these units offer low insertion loss and good rejection.

KEY FEATURES

Feature	Advantages
Small Size, 1206	Allows for high layout density of circuit boards, while minimizing the effects of parasitics
Wrap around termination	Provides excellent solderability and easy visual inspection capability.
LTCC construction	Provides a rugged package that is well suited for tough environments including high humidity and high temperature extremes.
Rugged Power handling	Handles up to 1.5 Watts in a small package.

REV. E
ECO-016659
BFCN-2900+
URJ
230202





LTCC SMT

Band Pass Filter

BFCN-2900+

ELECTRICAL SPECIFICATIONS^{1,2} AT 25°C

Parameter	F#	Frequency (MHz)	Min.	Typ.	Max.	Units
Passband	Center Frequency	—	—	2900	—	MHz
	Insertion Loss	F1-F2	2700 - 3100	—	3	dB
	Return Loss	F1-F2	2700 - 3100	4.96	8.09	dB
Stop Band, Lower	Rejection	DC-F3	DC - 1800	—	25	dB
		F4	1850	20	—	dB
Stop Band, Upper	Rejection	F5	4200	20	—	dB
		F6-F7	4900 - 7000	—	25	dB

1. This component should not be used as a DC-block. In applications where DC voltage and/or current is present at either the input or output ports, external DC blocking capacitors are required.

2. Measured on Mini-Circuits Characterization Test Board TB-285.

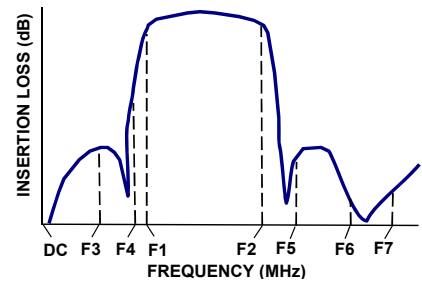
ABSOLUTE MAXIMUM RATINGS¹

Parameter	Ratings
Operating temperature	-55°C to 100°C
Storage temperature	-55°C to 100°C
RF Power Input ²	1.5W @25°C

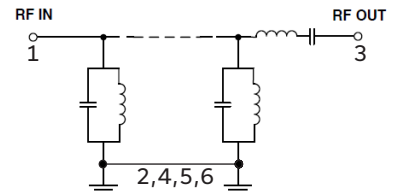
1. Permanent damage may occur if any of these limits are exceeded.

2. Power rating applies only to signals within the passband. Power rating above +25°C operating temperature decreases linearly to 0.25W at +100°C.

TYPICAL FREQUENCY RESPONSE



FUNCTIONAL DIAGRAM



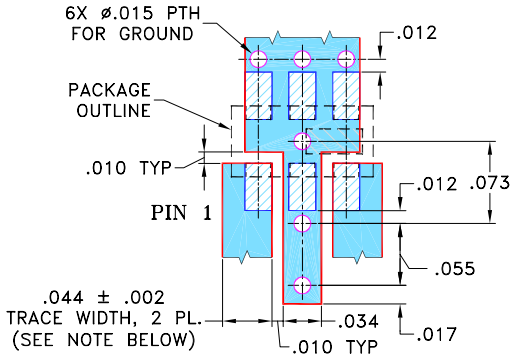


PAD CONNECTIONS

RF IN	1
RF OUT	3
GROUND	2,4,5,6

PRODUCT MARKING: RP

DEMO BOARD MCL P/N: TB-285
SUGGESTED PCB LAYOUT (PL-158)

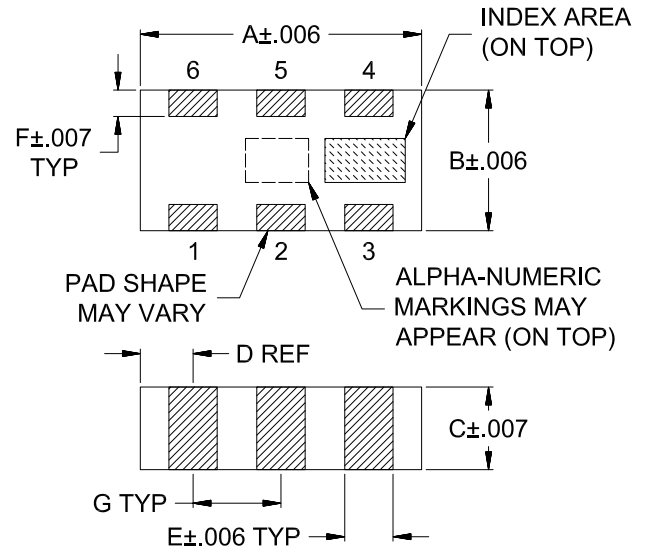


NOTE: 1. TRACE WIDTH IS SHOWN FOR ROGERS R04350B WITH DIELECTRIC THICKNESS .020" \pm .0015". COPPER: 1/2 OZ. EACH SIDE. FOR OTHER MATERIALS TRACE WIDTH MAY NEED TO BE MODIFIED.

2. BOTTOM SIDE OF THE PCB IS CONTINUOUS GROUND PLANE.

- DENOTES PCB COPPER LAYOUT WITH SMOBC (SOLDER MASK OVER BARE COPPER)
- DENOTES COPPER LAND PATTERN FREE OF SOLDER MASK

OUTLINE DRAWING



OUTLINE DIMENSIONS (Inches/mm)

A	B	C	D	E	F	G	Wt.
.126	.063	.035	.024	.022	.011	.039	grams
3.20	1.60	0.89	0.61	0.56	0.28	0.99	.020