

Surface Mount Frequency Mixer

ADE-1H+

Level 17 (LO Power +17 dBm) 0.5 to 500 MHz



Generic photo used for illustration purposes only

CASE STYLE: CD636

+RoHS Compliant

The +Suffix identifies RoHS Compliance. See our web site for RoHS Compliance methodologies and qualifications

Available Tape and Reel at no extra cost

Reel Size	Devices/Reel
7"	20, 50, 100, 200
13"	500, 1000

Maximum Ratings

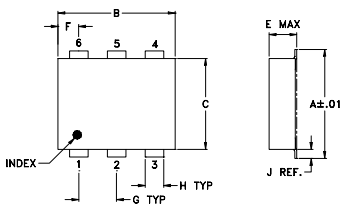
Operating Temperature	-40°C to 85°C
Storage Temperature	-55°C to 100°C
RF Power	200mW
IF Current	40mA

Permanent damage may occur if any of these limits are exceeded.

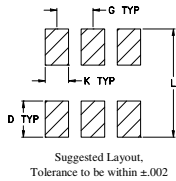
Pin Connections

LO	6
RF	3
IF	2
GROUND	1,4,5

Outline Drawing



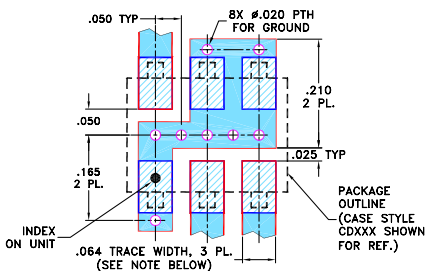
PCB Land Pattern



Outline Dimensions (inch/mm)

A	B	C	D	E	F	G
.272	.310	.220	.100	.162	.055	.100
6.91	7.87	5.59	2.54	4.11	1.40	2.54
H	J	K	L	wt		
.030	.026	.065	.300	grams		
0.76	0.66	1.65	7.62	0.25		

Demo Board MCL P/N: TB-03 Suggested PCB Layout (PL-052)



Features

- low conversion loss, 5.3 dB typ.
- excellent L-R isolation, 52 dB typ.
- excellent IP3, 23 dBm typ.
- aqueous washable
- protected by U.S. Patent 6,133,525

Applications

- VHF/UHF receivers

Electrical Specifications

FREQUENCY (MHz)	CONVERSION LOSS (dB)	LO-RF ISOLATION (dB)			LO-IF ISOLATION (dB)			IP3 at center band (dBm)						
		L	M	U	L	M	U							
0.5-500	DC-500	65	50	52	35	40	26	53	40	42	25	32	20	23

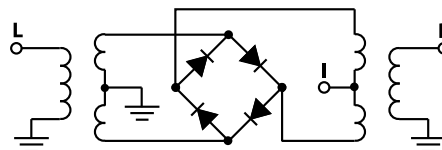
1 dB COMP.: +14 dBm typ.

L = low range [f_l to $10 f_l$]
M = mid band [$2 f_l$ to $f_u/2$]
U = upper range [$f_u/2$ to f_u]

Typical Performance Data

Frequency (MHz)		Conversion Loss (dB)	Isolation L-R (dB)	Isolation L-I (dB)	VSWR RF Port (:1)	VSWR LO Port (:1)
RF	LO	LO +17dBm	LO +17dBm	LO +17dBm	LO +17dBm	LO +17dBm
0.50	30.50	5.92	65.80	53.70	1.65	1.54
1.00	31.00	5.41	65.80	53.40	1.43	1.54
2.00	32.00	5.22	65.70	52.70	1.34	1.55
5.00	35.00	4.88	64.90	51.90	1.32	1.55
10.00	40.00	4.71	63.50	50.80	1.30	1.54
50.00	80.00	4.81	55.90	43.90	1.21	1.63
58.92	88.92	4.80	55.70	42.90	1.22	1.59
100.00	130.00	4.81	53.30	39.50	1.21	1.54
117.74	147.74	4.78	52.70	39.00	1.19	1.65
176.55	206.55	4.88	57.10	36.20	1.23	1.59
200.00	230.00	5.04	55.70	35.90	1.22	1.70
235.37	265.37	5.04	55.80	35.10	1.20	1.70
250.00	280.00	5.16	56.50	34.80	1.17	1.67
300.00	330.00	5.34	51.00	33.80	1.14	1.88
353.01	383.01	5.44	42.30	32.30	1.13	1.80
400.00	430.00	5.46	39.60	29.70	1.12	2.08
411.82	441.82	5.44	39.80	29.30	1.12	2.03
450.00	480.00	5.78	40.00	29.40	1.15	2.06
470.00	500.00	5.96	39.50	30.70	1.19	2.23
500.00	530.00	6.47	38.60	31.70	1.27	2.20

Electrical Schematic



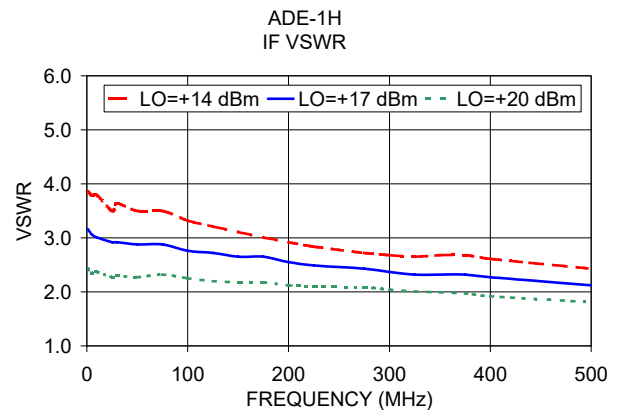
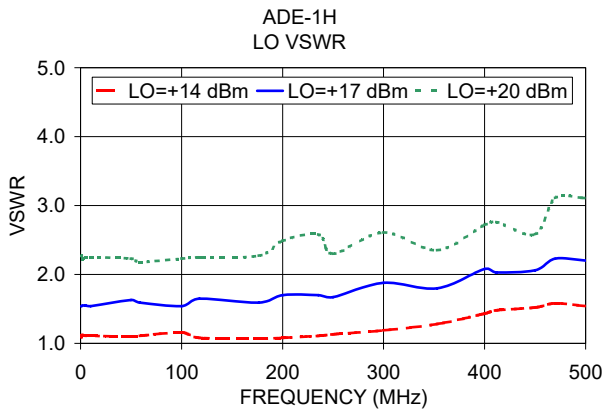
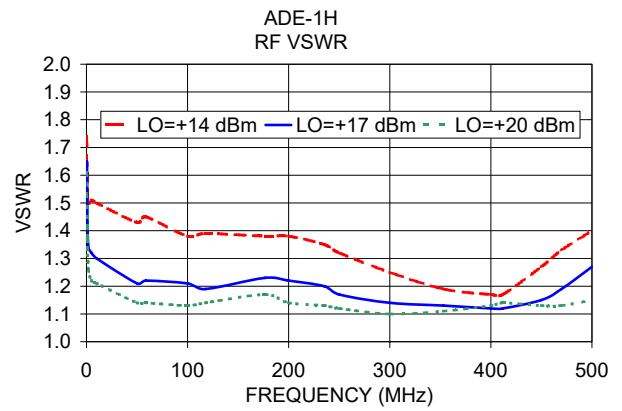
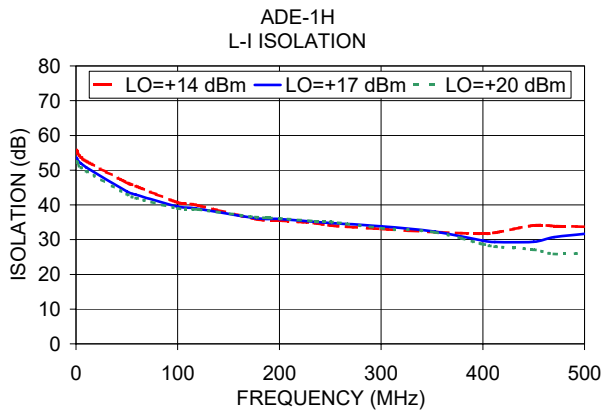
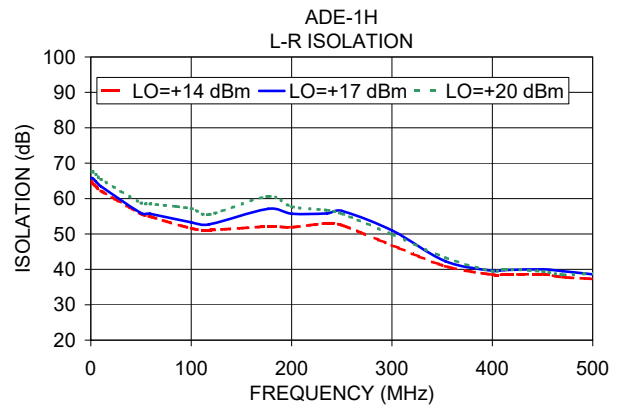
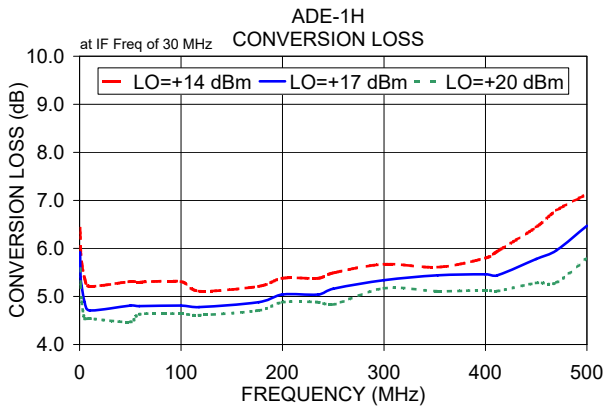
Notes

- A. Performance and quality attributes and conditions not expressly stated in this specification document are intended to be excluded and do not form a part of this specification document.
B. Electrical specifications and performance data contained in this specification document are based on Mini-Circuit's applicable established test performance criteria and measurement instructions.
C. The parts covered by this specification document are subject to Mini-Circuits standard limited warranty and terms and conditions (collectively, "Standard Terms"); Purchasers of this part are entitled to the rights and benefits contained therein. For a full statement of the Standard Terms and the exclusive rights and remedies thereunder, please visit Mini-Circuits' website at www.minicircuits.com/MCLStore/terms.jsp

Mini-Circuits®

www.minicircuits.com P.O. Box 350166, Brooklyn, NY 11235-0003 (718) 934-4500 sales@minicircuits.com

REV. G
M158496
ADE-1H
ED-7695/1
WL/TD/CP/AM
200421
Page 1 of 2



Notes

- A. Performance and quality attributes and conditions not expressly stated in this specification document are intended to be excluded and do not form a part of this specification document.
- B. Electrical specifications and performance data contained in this specification document are based on Mini-Circuit's applicable established test performance criteria and measurement instructions.
- C. The parts covered by this specification document are subject to Mini-Circuit's standard limited warranty and terms and conditions (collectively, "Standard Terms"); Purchasers of this part are entitled to the rights and benefits contained therein. For a full statement of the Standard Terms and the exclusive rights and remedies thereunder, please visit Mini-Circuit's website at www.minicircuits.com/MCLStore/terms.jsp

