

## 6-18GHz 4-way Wilkinson Power Divider

**PDW06089**

### DESCRIPTION

DLI's 6-18GHz 4-way power divider / combiner offers unmatched size and performance in a surface mount configuration. This power divider utilizes DLI's low loss temperature stable materials which offer small size and minimal performance variation over temperature.

### FEATURES

- Small Size
- Frequency Stable over Temperature
- Solder Surface Mount Package
- Excellent Repeatability
- Moisture Sensitivity Level: MSL1
- Operating & Storage Temp: -55°C to +125°C
- Characteristic Impedance: 50Ω

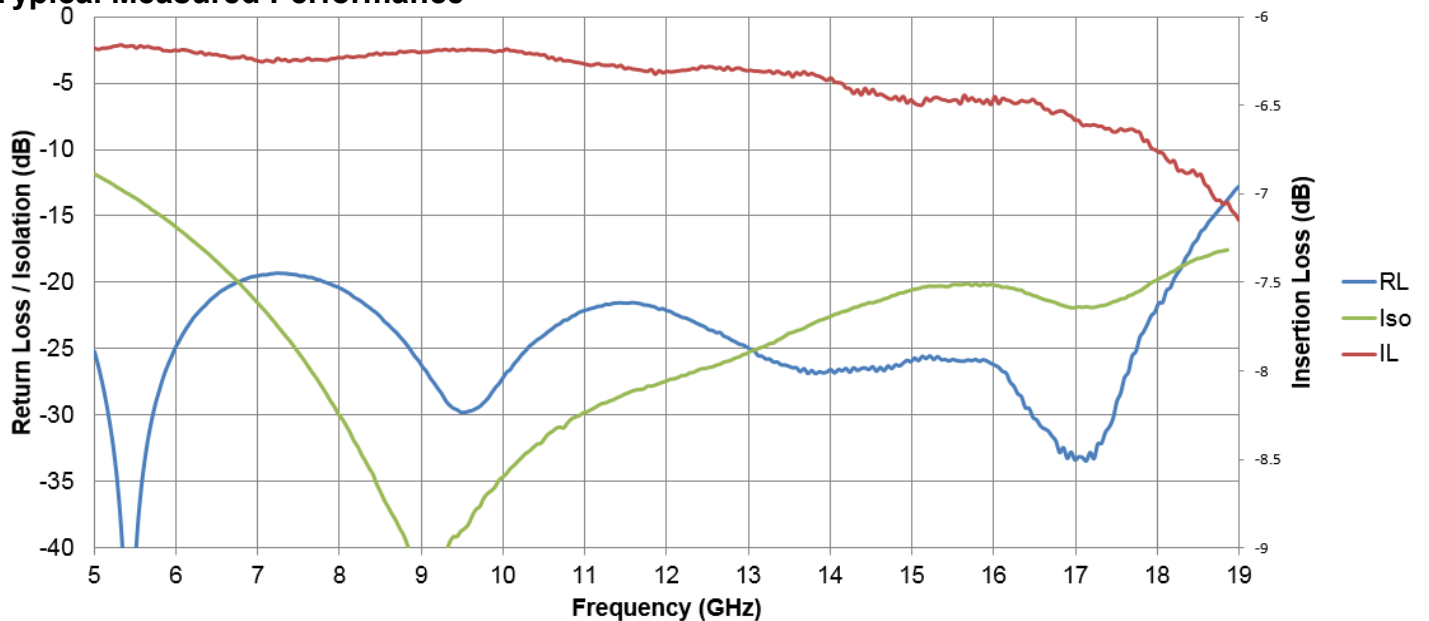
### SPECIFICATIONS\*

Parameter	Frequency Range (GHz)	Min	Typ.	Max	
Nominal Power Splitting (dB)	6-18		6.0		
Nominal Phase Shift (Deg)			0.0		
Amplitude Balance (dB)					± .5
Phase Balance (Deg)					± 3.0
Excess Insertion Loss (dB)					1
Return Loss (dB)			14		
Isolation (dB)			14		
Input Power (W)					5**

\*Electrical specifications based on typical probed performance at room temperature. Insertion loss shall vary ±0.5dB over temperature.

\*\*Operating condition: maximum Load VSWR 1.2:1; and maximum base plate temperature 85°C

### Typical Measured Performance

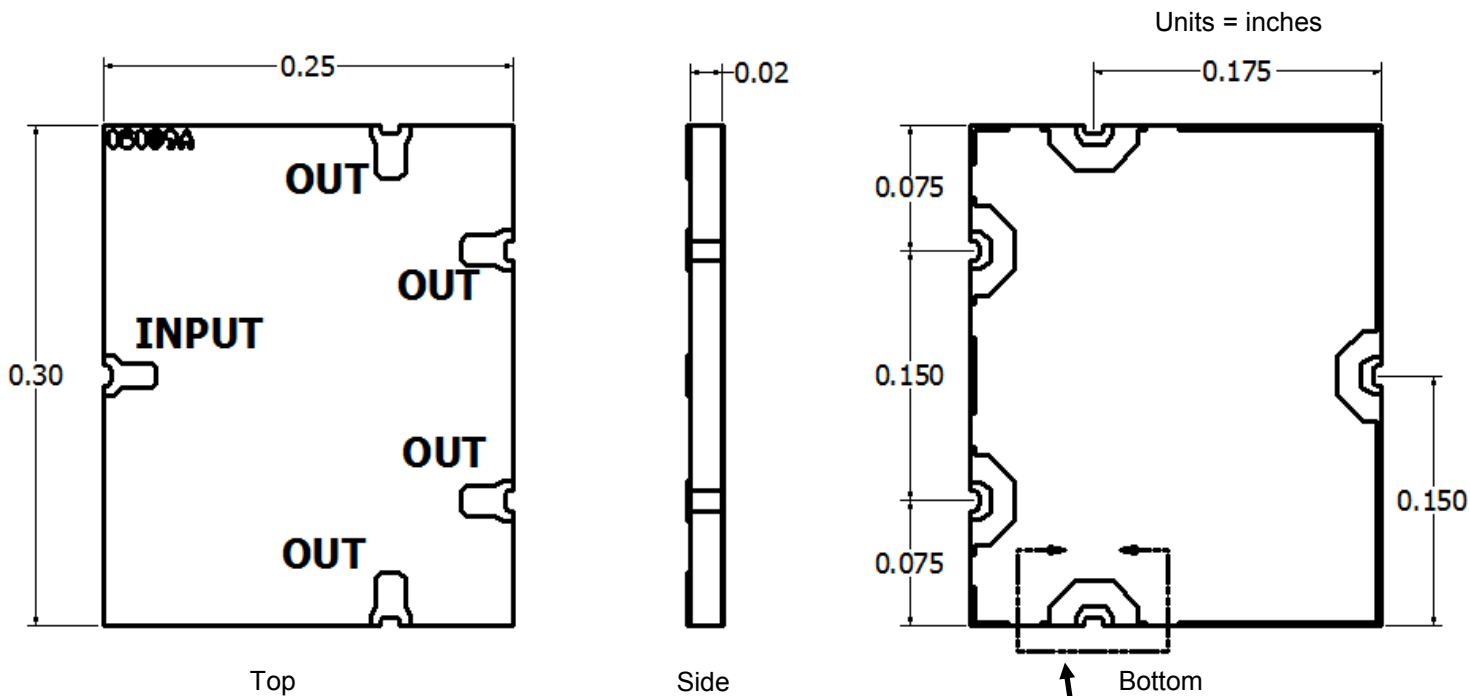




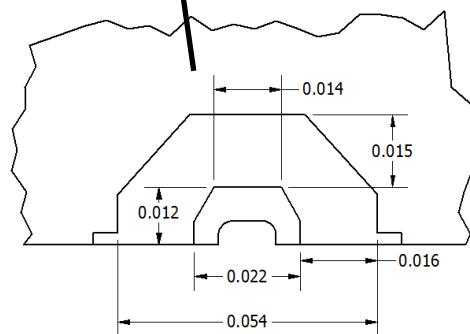
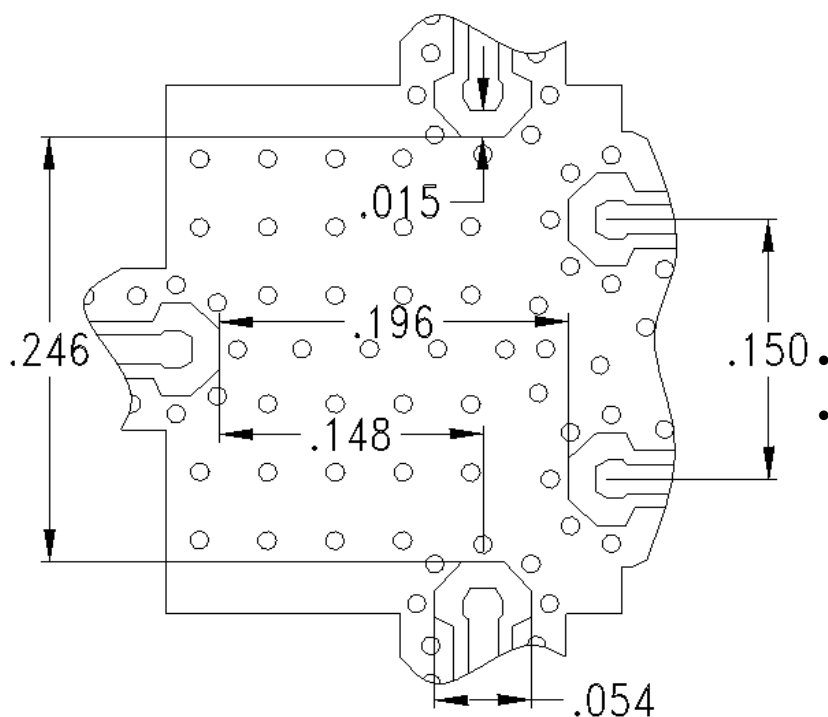
### 4-way Wilkinson Power Divider

www.dilabs.com  
PDW06089

### Physical Dimensions



### Recommended PCB Layout



- 50Ω trace dimensions are application specific.
- Ensure adequate grounding beneath the part.

