

# Surface Mount Bandpass Filter

## BPF-C510+

50Ω      20 to 1000 MHz



Generic photo used for illustration purposes only  
CASE STYLE: HU1186

### The Big Deal

- Sharp roll-off
- Wide bandwidth
- Good VSWR
- Miniature shielded package

### Product Overview

The BPF-C510+ is a wide band filter in a small shielded package (size of 0.87" x 0.80" x 0.25") fabricated using SMT technology. This filter offers sharp roll-off and rejection of 40dB Typ. for use in receiver front end applications..

### Key Features

Feature	Advantages
Sharp roll-off	BPF-C510+ attenuates spurious signals and rejects harmonics for wide band of frequency.
Good VSWR	This filter maintains typical VSWR over passband frequency range making this filter easier to integrate into receiver and transmitter RF chains with less concerns for in band frequency ripple.
Small size, 0.87" x 0.80" x 0.25"	The unique surface mount package enables the BPF-C510+ to be used in compact design.

#### Notes

- A. Performance and quality attributes and conditions not expressly stated in this specification document are intended to be excluded and do not form a part of this specification document.  
B. Electrical specifications and performance data contained in this specification document are based on Mini-Circuit's applicable established test performance criteria and measurement instructions.  
C. The parts covered by this specification document are subject to Mini-Circuits standard limited warranty and terms and conditions (collectively, "Standard Terms"); Purchasers of this part are entitled to the rights and benefits contained therein. For a full statement of the Standard Terms and the exclusive rights and remedies thereunder, please visit Mini-Circuits' website at [www.minicircuits.com/MCLStore/terms.jsp](http://www.minicircuits.com/MCLStore/terms.jsp)



# Surface Mount Bandpass Filter

## BPF-C510+

50Ω 20 to 1000 MHz



Generic photo used for illustration purposes only  
CASE STYLE: HU1186

### Features

- Sharp roll-off
- Wide bandwidth
- Good VSWR
- Miniature shielded package

### Applications

- Test equipment
- Receiver front end applications
- Harmonic rejection

### Electrical Specifications at 25°C

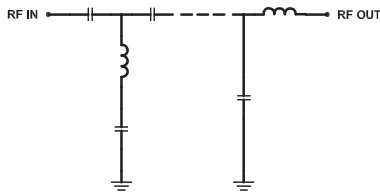
Parameter	F#	Frequency (MHz)	Min.	Typ.	Max.	Unit
Pass Band	Center Frequency	—	—	510	—	MHz
	Insertion Loss	F1-F2	20-1000	1.5	2.7	dB
	VSWR	F1-F2	20-1000	—	1.6	2.01
Stop Band, Lower	Insertion Loss	DC-F3	DC-17	20	29	dB
	VSWR	DC-F3	DC-17	—	20	:1
Stop Band, Upper	Insertion Loss	F4-F5	1150-1800	25	38	dB
	VSWR	F4-F5	1150-1800	—	20	:1

### Maximum Ratings

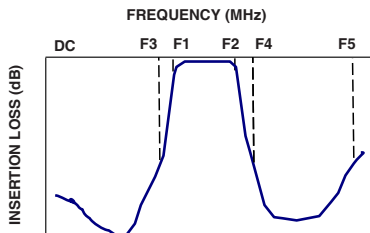
Operating Temperature	-40°C to 85°C
Storage Temperature	-55°C to 100°C
RF Power Input	1 W

Permanent damage may occur if any of these limits are exceeded.

### Functional Schematic



### Typical Frequency Response

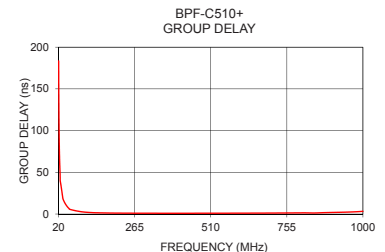
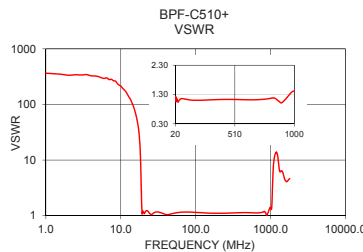
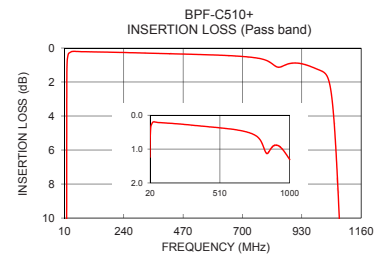
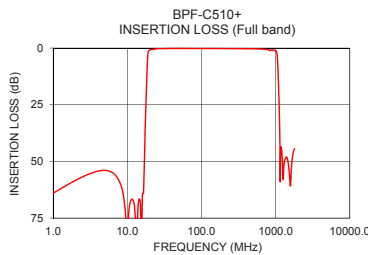


### Typical Performance Data at 25°C

Frequency (MHz)	Insertion Loss (dB)	VSWR (:1)	Frequency (MHz)	Group Delay (nsec)
1.0	64.03	364.20	20	183.43
10.0	84.00	214.59	21	115.45
17.0	49.57	41.79	22	83.73
17.5	33.17	30.88	23	65.68
18.0	20.49	19.11	24	53.99
18.5	9.11	7.01	25	39.97
18.9	3.08	2.10	30	28.00
20.0	0.95	1.18	40	13.22
100.0	0.22	1.14	50	7.85
250.0	0.27	1.11	75	3.92
510.0	0.37	1.13	100	2.42
750.0	0.58	1.14	200	1.14
1000.0	1.31	1.41	300	0.96
1048.0	3.12	1.94	400	0.93
1080.0	11.63	6.09	500	0.96
1102.0	20.22	9.09	600	1.03
1124.0	30.61	11.09	800	1.39
1150.0	56.84	12.66	900	1.88
1650.0	50.80	4.08	950	2.31
1800.0	44.46	4.62	1000	3.27

### +RoHS Compliant

The +Suffix identifies RoHS Compliance. See our web site for RoHS Compliance methodologies and qualifications



### Notes

- Performance and quality attributes and conditions not expressly stated in this specification document are intended to be excluded and do not form a part of this specification document.
- Electrical specifications and performance data contained in this specification document are based on Mini-Circuit's applicable established test performance criteria and measurement instructions.
- The parts covered by this specification document are subject to Mini-Circuit's standard limited warranty and terms and conditions (collectively, "Standard Terms"); Purchasers of this part are entitled to the rights and benefits contained therein. For a full statement of the Standard Terms and the exclusive rights and remedies thereunder, please visit Mini-Circuit's website at [www.minicircuits.com/MCLStore/terms.jsp](http://www.minicircuits.com/MCLStore/terms.jsp)

