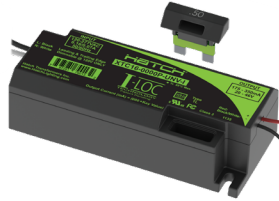


## I-LOC KEY PROGRAMMABLE CONSTANT CURRENT LED DRIVERS

### XTC



- Plastic Housing
- Side Lead
- Phase
- 16W-34W
- 175mA-1050mA
- Smallest Form Factor

### XAC



- Metal Housing
- Side Lead
- Phase or 0-10V
- 16W-34W
- 175mA-1050mA

### XRC



- Metal Housing
- Bottom Feed
- Phase or 0-10V
- 16W-34W
- 175mA-1050mA

The I-LOC family of Key Programmable Constant Current LED Drivers use a 'pick and click' technology for rapidly programming the output current. Featuring a full set of keys that allow each driver to be programmed down to 50% of the maximum output current, no additional programming tools or software are required. This reduces driver inventory and provides maximum flexibility when it comes to factory operations.

### KEY BENEFITS FOR OEMs

- Faster speed to market
- Fewer SKUs to stock
- No special training
- No extra programming equipment
- Cross platform capability

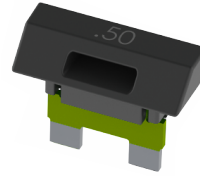
## I-LOC MODEL SELECTOR GUIDE

Part Number	Max. Power	Output Current Range	Output Voltage Range	Dimming	Leads
XTC16-0350P-UNV-I	<b>16W</b>	175-350mA	24-46VDC	Phase	Side
XAC16-0350P-UNV-I					Side
XRC16-0350P-UNV-I					Bottom
XAC16-0350Z-UNV-I				0-10V	Side
XRC16-0350Z-UNV-I					Bottom
XTC32-0700P-UNV-I	<b>32W</b>	350-700mA	24-46VDC	Phase	Side
XAC32-0700P-UNV-I					Side
XRC32-0700P-UNV-I					Bottom
XAC32-0700Z-UNV-I				0-10V	Side
XRC32-0700Z-UNV-I					Bottom
XTC34-1050P-UNV-I	<b>34W</b>	525-1050mA	14-32VDC	Phase	Side
XAC34-1050P-UNV-I					Side
XRC34-1050P-UNV-I					Bottom
XAC34-1050Z-UNV-I				17-32VDC	0-10V
XRC34-1050Z-UNV-I			Bottom		

\*All models can be used in non-dimming applications.



## I-LOC KEY PROGRAMMABLE CONSTANT CURRENT LED DRIVER KEYS



Hatch I-LOC LED drivers give designers an easy way to optimize fixture designs and specification documents with selectable output current in lower wattage drivers. Manufacturing engineers like the simple process documentation and ease of integration into the production flow without adding computer workstations, software management, cables, or programming hardware.

The chart below gives the list of keys and the output current that each will program for the LED drivers. Simply choose the wattage, select the output current from the chart, pick the key, and click it into the driver. The keys are interchangeable across the model numbers and allow customization of the output current from 100% to 50%.

I-LOC LED Drivers feature either phase dimming or 0-10V dimming. The 0-10V dimming designs will dim down to 1% of the adjusted output current.

For complete specifications, please visit [hatchlighting.com](http://hatchlighting.com) to view full product performance and output graphs.

### I-LOC KEY SELECTOR GUIDE

16W MODELS		32W MODELS		34W MODELS		Key Part Number	Drive Factor/ Key Label
Output Current (mA)	Output Power (W)	Output Current (mA)	Output Power (W)	Output Current (mA)	Output Power (W)		
350	16	700	32	1050	34	XA100	1.00
343	16	686	32	1029	33	XB098	0.98
333	16	665	31	998	32	XC095	0.95
326	15	651	30	977	32	XD093	0.93
315	15	630	29	945	31	XE090	0.90
308	15	616	29	924	30	XF088	0.88
298	14	595	28	893	29	XG085	0.85
291	14	581	27	872	28	XH083	0.83
280	13	560	26	840	27	XI080	0.80
273	13	546	26	819	26	XJ078	0.78
263	13	525	25	788	26	XK075	0.75
256	12	511	24	767	25	XL073	0.73
245	12	490	23	735	24	XM070	0.70
238	11	476	22	714	23	XN068	0.68
228	11	455	21	683	22	XO065	0.65
221	11	441	21	662	22	XPO63	0.63
210	10	420	20	630	21	XQ060	0.60
203	10	406	19	609	20	XR058	0.58
193	9	385	18	578	19	XS055	0.55
186	9	371	17	557	18	XT053	0.53
175	8	350	16	525	17	XU050	0.50