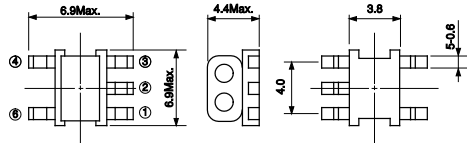
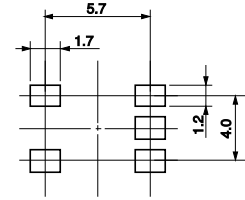


TYPE B5F



(Unit: mm)

Recommended patterns 推荐焊盘尺寸



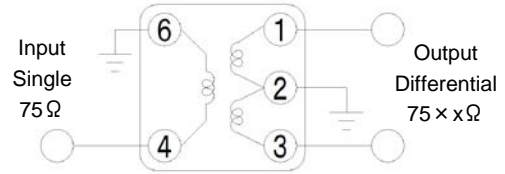
(Unit: mm)

- RoHS compliant
- 符合RoHS指令

Transformers for Frequency Mixer 混频器用变压器

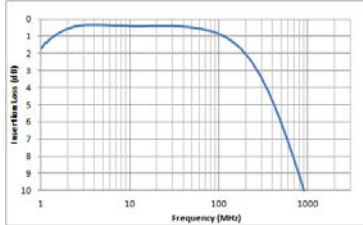
Part No.	Winding Turns		Impedance Ratio
	1-2=2-3	4-6	
#458PT-1566=P3	3T	6T	75 : 75
#458PT-1720=P3	2T	5T	75 : 50
#458PT-2002=P3	2T	6T	75 : 37.5
#458PT-2078=P3	1T	4T	75 : 18.75

Test Circuit 测试电路

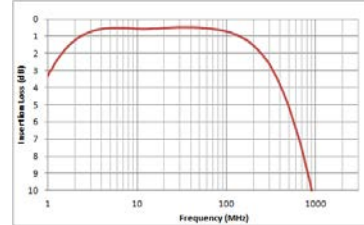


Typical Characteristics 代表特性例

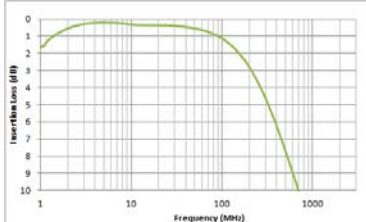
1) #458PT-1566 (Impedance Ratio=75Ω:75Ω)



2) #458PT-1720 (Impedance Ratio=75Ω:50Ω)



3) #458PT-2002 (Impedance Ratio=75Ω:37.5Ω)



4) #458PT-2078 (Impedance Ratio=75Ω:18.75Ω)

