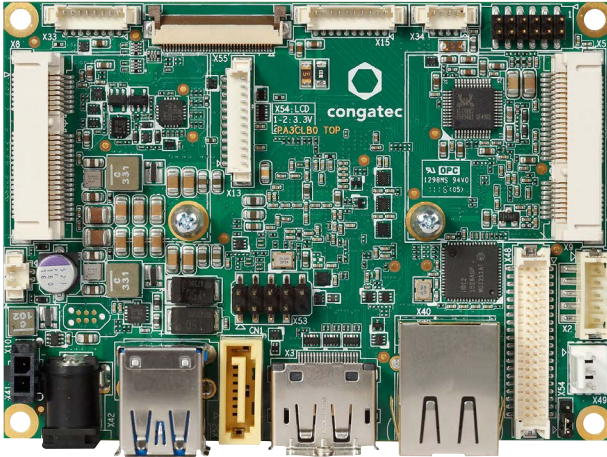


INDUSTRIAL PICO-ITX

conga-PA3

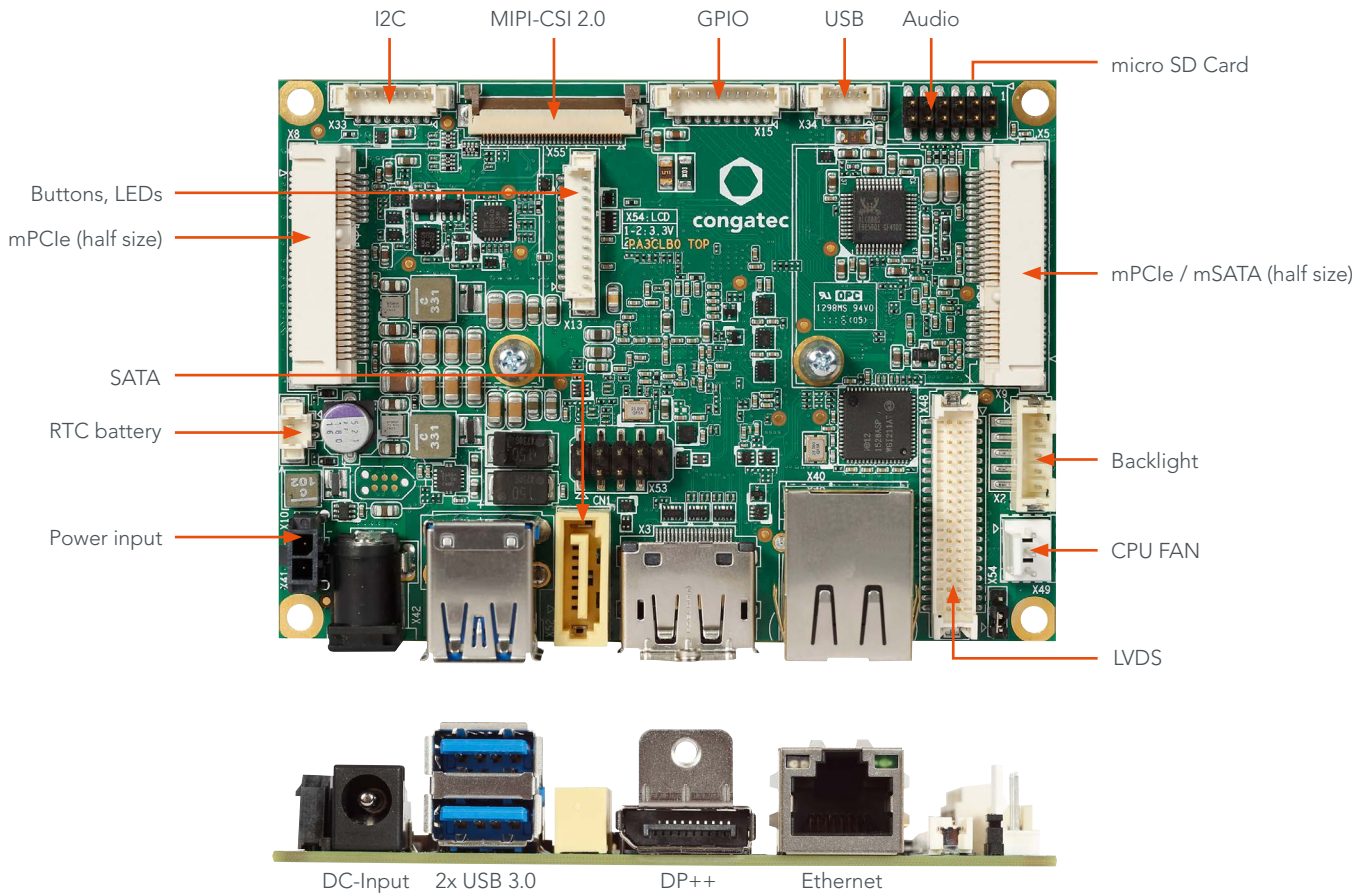


- Compact and complete for small Industry 4.0
- 3rd Generation Intel Atom® / Celeron® Processor
- Low Power 5 to 10 Watt TDP
- Enhanced Intel® HD Graphics Generation 7
- Long life components for 24/7 embedded use
- Smallest SBC computing and connecting device
- Extended Temperature

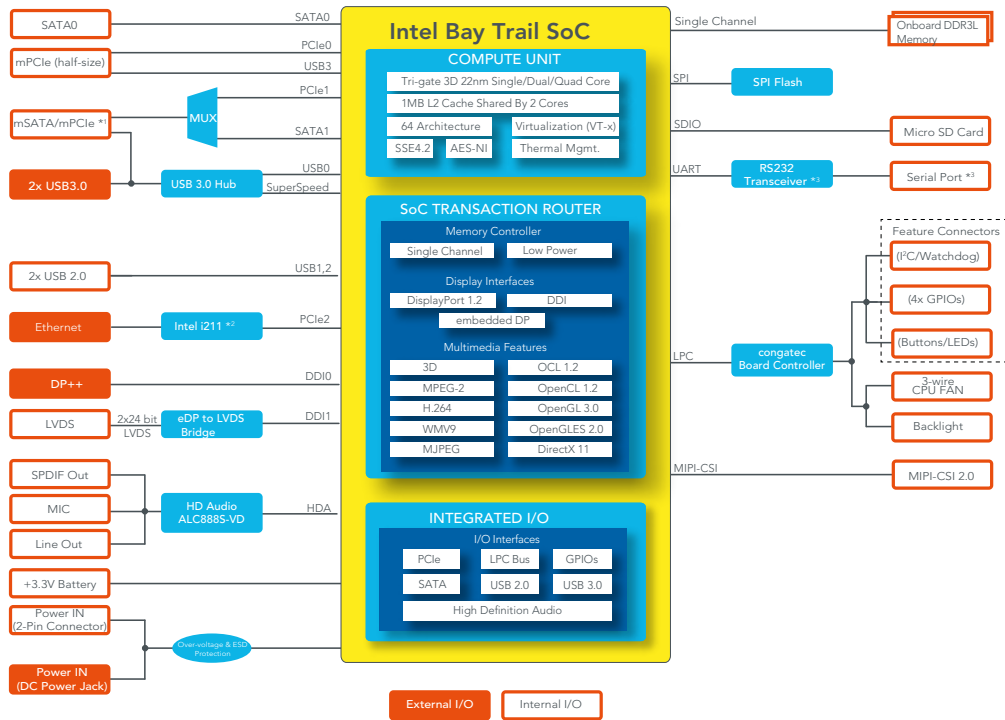
Formfactor	pico-ITX Singleboard Computer 100x72 mm			
CPU	Intel Atom® E3845	1.91 GHz Quad Core	2 MB L2 Cache	10W TDP
	Intel Atom® E3826	1.46 GHz Dual Core	1 MB L2 Cache	7W TDP
	Other Variants by request			
DRAM Memory	Single Channel up to 4GB onboard DDR3L with 1333 MHz			
Chipset	Integrated in SoC			
Ethernet	LAN Gbit / 100 Mbit / 10 Mbit Intel Gigabit Ethernet i211 controller (i210 for industrial temperature)			
Sound	High Definition Audio Interface* Realtek ALC 888S-VD 7.1-channel			
Graphics	Next Generation Intel® HD Graphics			
Graphic Interfaces	1x 24-bit Dual Channel LVDS Interface (via eDP to LVDS converter PTN3460) 1x DisplayPort DP++ resolution up 1920x1200 with 60Hz			
Internal Connectors	1x mPCIe Half Size 1x mPCIe Half Size shared with mSATA 1x SATA (3G) (no SATA power) 2x USB 2.0 1x LVDS* 2x24bit 1x Backlight power connector 1x Line Out 1xMic In 1x S/PDIF Out 1x Power In (+12V) 1x COM (RS-232) 1x Fan Connector 1x Feature Connector micro SD Card MIPI-CSI 2.0			
External Connectors (Frontpanel)	1x DisplayPort DP++ 1x LAN RJ45 2x USB 3.0 1x DC-In (external input)*			
congatec embedded Controller	Multi-Stage Watchdog non-volatile User Data Storage Manufacturing and Board Information Board Statistics BIOS Setup Data Backup I ² C bus (fast mode 400 kHz multi-master) Power Loss Control			
Embedded BIOS	AMI Aptio® 2.X (UEFI) BIOS; SM-BIOS BIOS Update Logo Boot Quiet Boot HDD Password			
Power Specification	Power Supply 12V 1 x FAN RTC battery*			
Operating Systems	Microsoft® Windows 10 Microsoft® Windows 10 IoT Enterprise Microsoft® Windows 10 IoT Core Microsoft® Windows 8 Microsoft® Windows 7 Linux Microsoft® Windows® 7/8 embedded Standard Android Yocto MoonIsland / WindRiver IDP			
Operating Temperature:	Commercial: 0 .. +60°C Industrial: -40* + 85°C			
Humidity Operating:	Operating: 10 - 90% r. H. non cond.			
Size	100 x 72 mm (3.9" x 2.8")			

* see User-Manual for detailed informations

conga-PA3 | Connectors



conga-PA3 | Block diagram



*1 The mSATA/mPCIe connector supports both mPCIe and mSATA devices. The devices are detected automatically.
 *2 Industrial variants are equipped with Intel i210 controller.
 *3 Revision B.x and later are equipped with a multiprotocol transceiver.