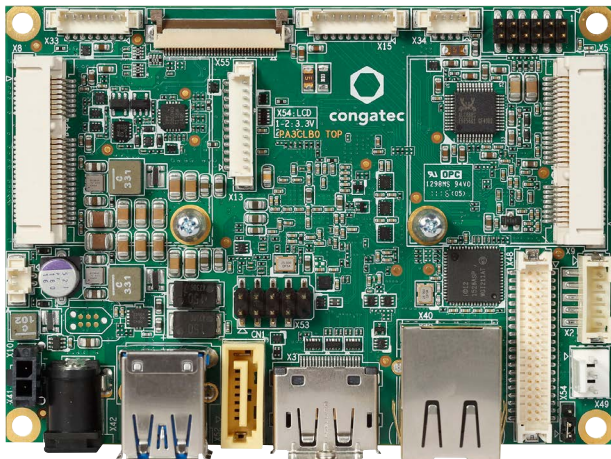


# INDUSTRIAL PICO-ITX

## conga-PA3

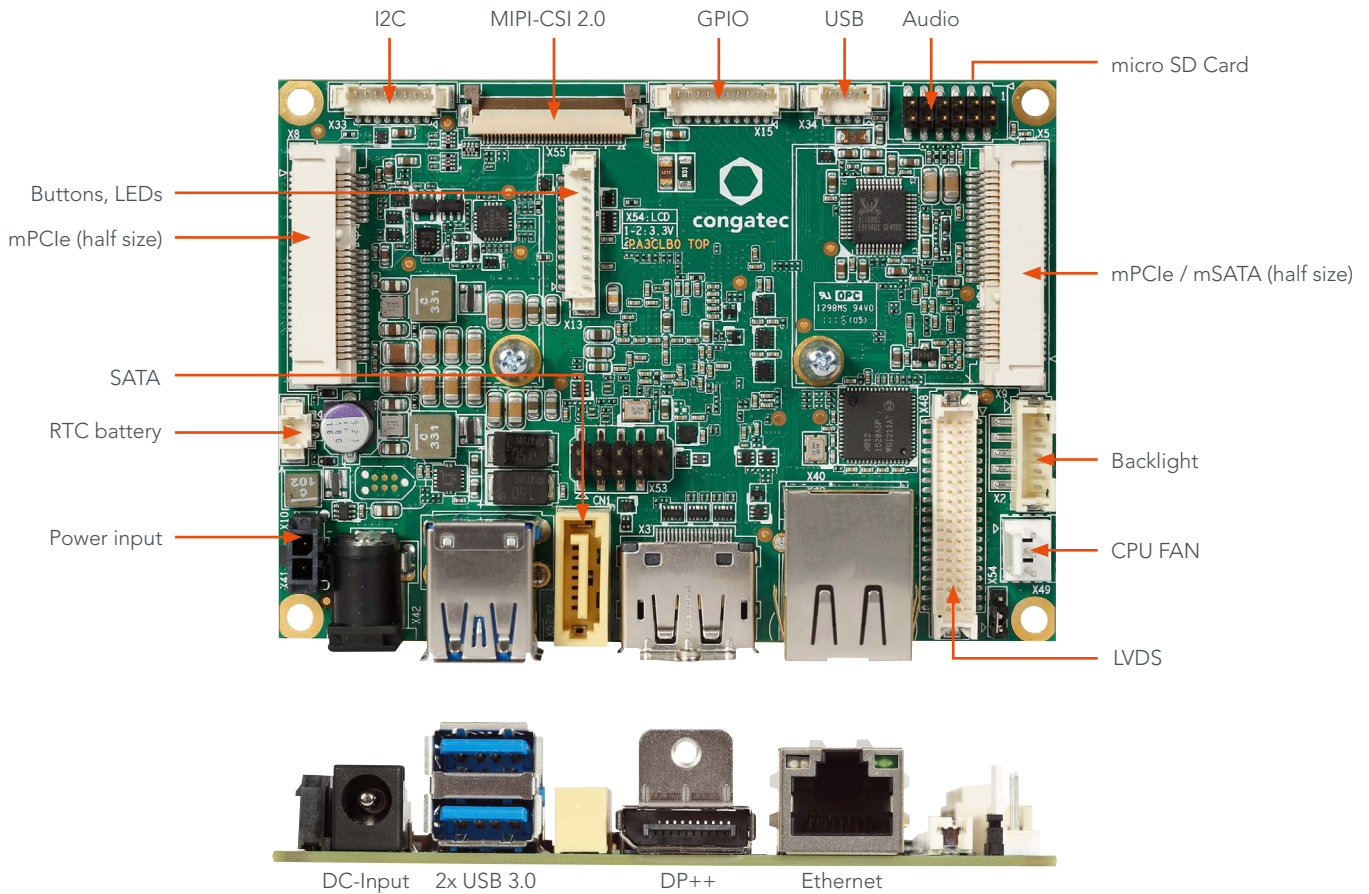


- Compact and complete for small Industry 4.0
- 3<sup>rd</sup> Generation Intel Atom® / Celeron® Processor
- Low Power 5 to 10 Watt TDP
- Enhanced Intel® HD Graphics Generation 7
- Long life components for 24/7 embedded use
- Smallest SBC computing and connecting device
- Extended Temperature

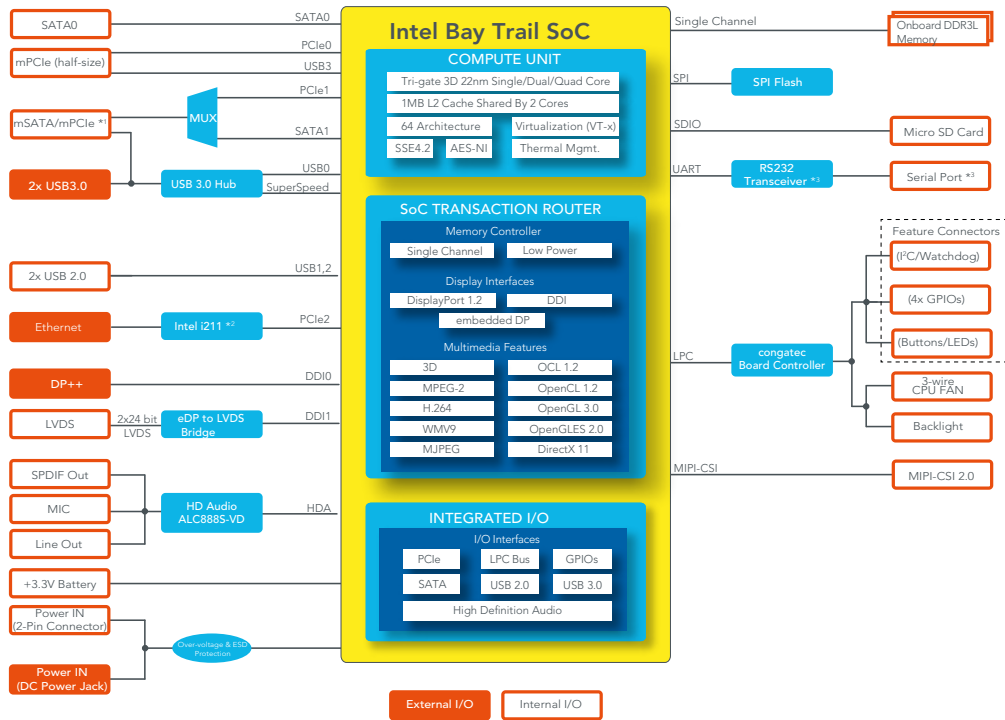
Formfactor	pico-ITX Singleboard Computer   100x72 mm			
CPU	Intel Atom® E3845	1.91 GHz Quad Core	2 MB L2 Cache	10W TDP
	Intel Atom® E3826	1.46 GHz Dual Core	1 MB L2 Cache	7W TDP
	Other Variants by request			
DRAM Memory	Single Channel up to 4GB onboard DDR3L with 1333 MHz			
Chipset	Integrated in SoC			
Ethernet	LAN Gbit / 100 Mbit / 10 Mbit   Intel Gigabit Ethernet i211 controller (i210 for industrial temperature)			
Sound	High Definition Audio Interface*   Realtek ALC 888S-VD   7.1-channel			
Graphics	Next Generation Intel® HD Graphics			
Graphic Interfaces	1x 24-bit Dual Channel LVDS Interface (via eDP to LVDS converter PTN3460)   1x DisplayPort DP++   resolution up 1920x1200 with 60Hz			
Internal Connectors	1x mPCIe Half Size   1x mPCIe Half Size shared with mSATA   1x SATA (3G) (no SATA power)   2x USB 2.0 1x LVDS* 2x24bit   1x Backlight power connector   1x Line Out   1xMic In   1x S/PDIF Out   1x Power In (+12V) 1x COM (RS-232)   1x Fan Connector   1x Feature Connector   micro SD Card   MIPI-CSI 2.0			
External Connectors (Frontpanel)	1x DisplayPort DP++   1x LAN RJ45   2x USB 3.0   1x DC-In (external input)*			
congatec embedded Controller	Multi-Stage Watchdog   non-volatile User Data Storage   Manufacturing and Board Information   Board Statistics   BIOS Setup Data Backup I <sup>2</sup> C bus (fast mode   400 kHz   multi-master)   Power Loss Control			
Embedded BIOS	AMI Aptio® 2.X (UEFI) BIOS; SM-BIOS   BIOS Update   Logo Boot   Quiet Boot   HDD Password			
Power Specification	Power Supply 12V   1 x FAN   RTC battery*			
Operating Systems	Microsoft® Windows 10   Microsoft® Windows 10 IoT Enterprise   Microsoft® Windows 10 IoT Core   Microsoft® Windows 8   Microsoft® Windows 7 Linux   Microsoft® Windows® 7/8 embedded Standard   Android   Yocto   MoonIsland / WindRiver IDP			
Operating Temperature:	Commercial: 0 .. +60°C Industrial: -40* + 85°C			
Humidity Operating:	Operating: 10 - 90% r. H. non cond.			
Size	100 x 72 mm (3.9" x 2,8")			

\* see User-Manual for detailed informations

# conga-PA3 | Connectors



# conga-PA3 | Block diagram



\*1 The mSATA/mPCIe connector supports both mPCIe and mSATA devices. The devices are detected automatically.  
 \*2 Industrial variants are equipped with Intel i210 controller.  
 \*3 Revision B.x and later are equipped with a multiprotocol transceiver.