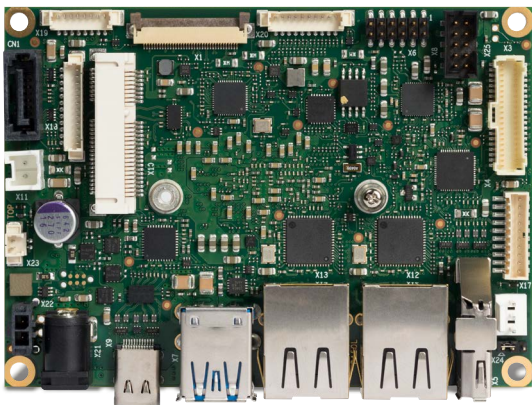


# INDUSTRIAL PICO-ITX

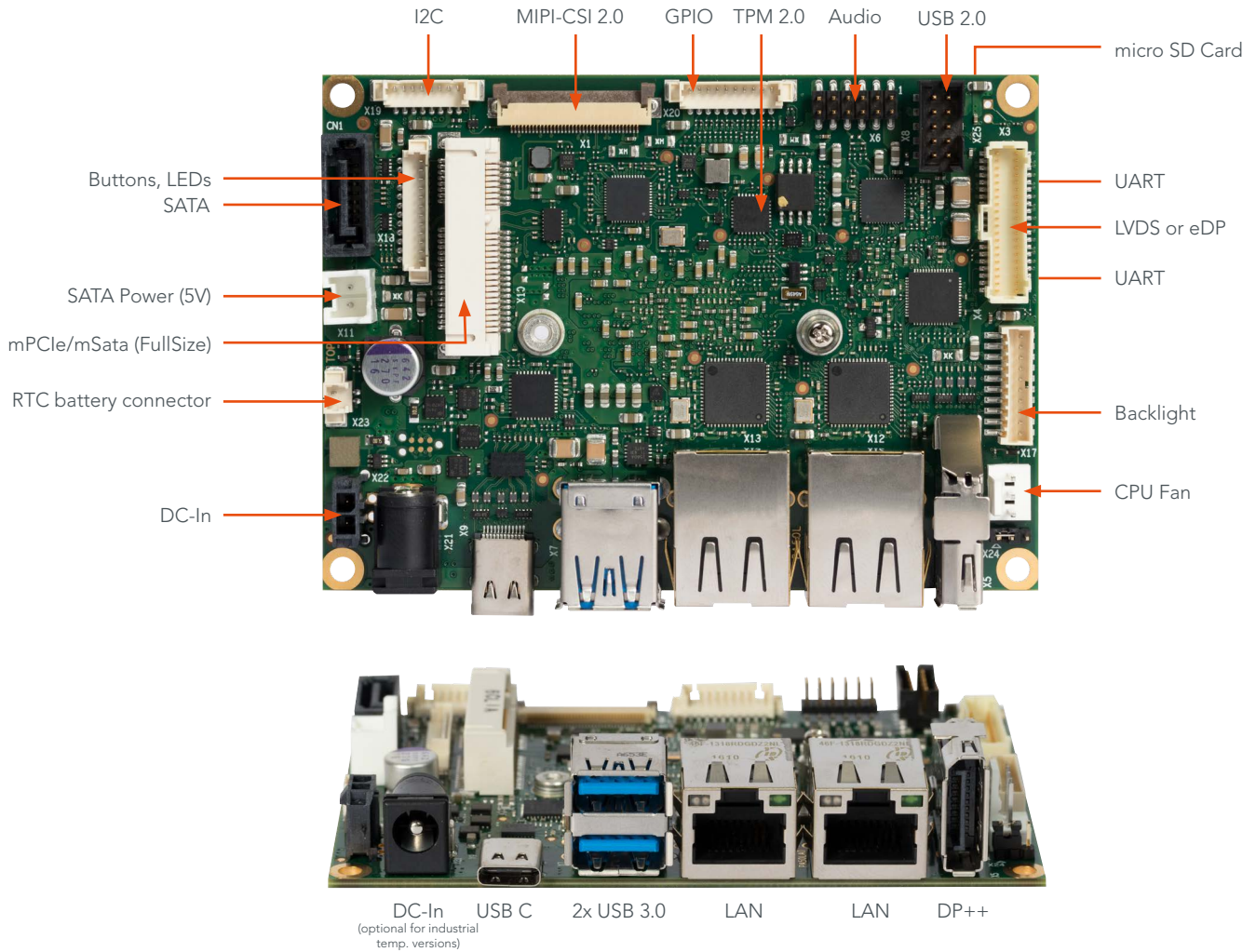
## conga-PA5



- 5<sup>th</sup> Generation Intel Atom®, Intel® Celeron® and Intel® Pentium® Processors
- Low Power CPUs 6 to 12 Watt TDP
- Enhanced Intel HD Graphics Generation 9
- Compact design for size-sensitive devices in harsh environments
- Long life components for 24/7 embedded use
- Two Intel® i210/211 Ethernet controllers allowing for enhanced industrial communication
- Extended Temperature variants
- On board TPM for enhanced security

Formfactor	pico-ITX Singleboard Computer   100x72 mm				
CPU	Intel® Atom™ x7-E3950	2.00 GHz (Burst)	1.6 GHz Clock	Quad Core	L2 cache 2MB   12W TDP
	Intel® Atom™ x5-E3940	1.80 GHz (Burst)	1.6 GHz Clock	Quad Core	L2 cache 2MB   9.5W TDP
	Intel® Atom™ x5-E3930	1.80 GHz (Burst)	1.3 GHz Clock	Dual Core	L2 cache 2MB   6.5W TDP
	Intel® Pentium® N4200	2.50 GHz (Burst)	1.1 GHz Clock	Quad Core	L2 cache 2MB   6W TDP
	Intel® Celeron® N3350	2.40 GHz (Burst)	1.1 GHz Clock	Dual Core	L2 cache 2MB   6W TDP
	Intel® Celeron® J3455	2.30 GHz (Burst)	1.5 GHz Clock	Quad Core	L2 cache 2MB   10W TDP
DRAM Memory	up to 4 Channels onboard LPDDR4 (V1.1) with up to 2400 MT/s   max. 8 GB				
Chipset	Integrated in SoC				
Ethernet	2x LAN Gbit / 100 Mbit / 10 Mbit   Intel Gigabit Ethernet controller i211 (i210 for industrial temperature variants)				
Sound	High Definition Audio Interface   Cirrus Logic CS4207				
Graphics	Intel® Gen 9 HD Graphics with support for DirectX12   OpenGL 4.3   OpenCL 2.0   OpenGL ES 3.x   MPEG2 full HW acceleration with H.265/HEVC decoding and H.264 encoding   VP9   PAVP 3.x   HDCP 1.4   MVC and 2x independent display support in 4K (3840 x 2160 px) @30 Hz or WQXGA (2560 x 1600 px) @60 Hz				
Graphic Interfaces	1x 18/24-bit Single/Dual Channel LVDS Interface or eDP 1.3   1x DisplayPort DP++   up to 4096x2160 @ 60Hz with DP				
Internal Connectors	1x miniPCIe or mSATA full size   1x SATA (6G) (with auxiliary +5V power connector for 2.5" HDD)   2x USB 2.0   1x LVDS 18/24bit or eDP 1.3   1x Backlight power connector   1x Line Out   1x Mic In   1x S/PDIF Out   1x Power In (+12V)   2x COM (RS232 / RS-485 / RS422)   1x Fan Connector   3x Feature Connector   micro SD Card   MIPI-CSI 2.0				
External Connectors (Frontpanel)	1x DisplayPort DP++   2x LAN RJ45   1x USB 3.0 Type C (with PD and DP++)   2x USB 3.0   1x DC-In (optional for industrial temperature variants)				
congatec embedded Controller	Multi-Stage Watchdog   non-volatile User Data Storage   Manufacturing and Board Information   Board Statistics   BIOS Setup Data Backup   I²C bus (fast mode, 400 kHz, multi-master)   Power Loss Control				
Embedded BIOS	AMI Aptio® 2.X (UEFI) BIOS; SM-BIOS   BIOS Update   Logo Boot   Quiet Boot   HDD Password				
Security	Integrated Intel® PTT (TPM 2.0) or Infineon SLB9670 (SPI TPM 2.0)				
Power Specification	Power Supply 12V   RTC battery				
Operating Systems	Microsoft® Windows 10   Microsoft® Windows 10 IoT Enterprise   Microsoft® Windows 10 IoT Core   Linux   Android				
Temperature	Commercial Variants:	Operating Temperature: 0 .. +60°C		Storage Temperature: -20 .. +70°C	
	Industrial Variants:	Operating Temperature: -40 .. +85°C		Storage Temperature: -40 .. +85°C	
Humidity	Operating:	10 - 90% r. H.			
	Storage:	5 - 95% r.H.			
Size	100 x 72 mm (~3.9 x 2.8")				

# conga-PA5 | Connectors



# conga-PA5 | Block diagram

