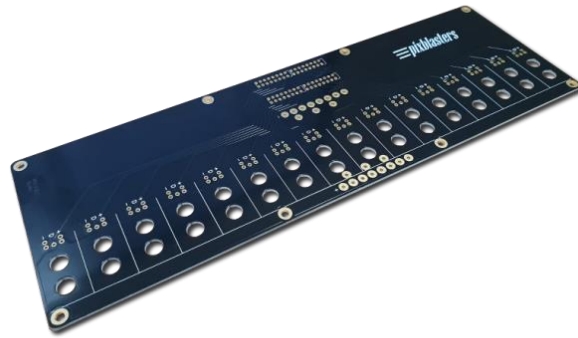


# Pixblasters™ Array-SL LED Strips Terminal Board



## MS1 LED CONTROLLER FEATURES

### ANY COMPUTER & ANY OS

Raspberry Pi, PC, media boxes, phones... – connects to any computer as an ordinary monitor.

### NO PROGRAMMING

Plug-in the monitor cable and the controller will smoothly drive LEDs at the maximum frame rate of 60 fps.

### DISPLAY MANAGEMENT

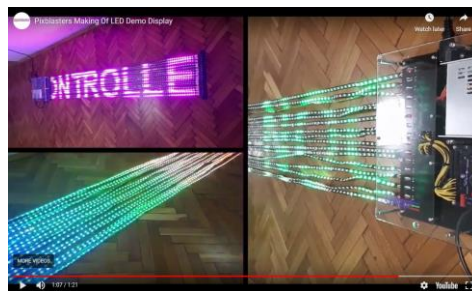
Use any Digital Signage Software and add layered screen divisions, text, animations, video, RSS...

The Array-SL board enables releasable connections of LED strips with the Pixblasters MS1 Video LED Controller and an easy build of the LED matrix. It distributes the video control signals from the MS1 LED controller and the power sourced from an external power supply. The board includes holes for easy wall mounting.

- The board is optional and enables easy and releasable connections with the Pixblasters MS1 Video LED Controller
- Pin-compatible with the 3-wire LED strips, such as WS2812B, WS2811, SK6812 and similar
- One Array-SL board can host 16 LED strips
- Works with +5 VDC and +12 VDC LED strips
- Board dimensions: 88 x 272 mm

## Demo LED Display

Learn more about the Array-SL board from the Pixblasters User's Manual:  
<http://pixblasters.com/documents/>



Make sure to visit Pixblasters video galleries for demo examples:  
<http://pixblasters.com/videos/>

To place an order, please contact Pixblasters at [info@pixblasters.com](mailto:info@pixblasters.com).

To order from our distributors, please visit Crowd Supply<sup>1</sup>:  
<https://www.crowdsupply.com/pixblasters/video-led-controller>

Part No:	Distributor	Product Name
CS-PIXBLASTER-04	Mouser Electronics	Pixblasters Array-SL Duo Kit (includes two Array-SL terminal boards)



Copyright © Pixblasters. All rights reserved.  
All trademarks are the property of their respective owners.

[www.pixblasters.com](http://www.pixblasters.com)

E-mail: [info@pixblasters.com](mailto:info@pixblasters.com)



<sup>1</sup> Distributed by Mouser Electronics