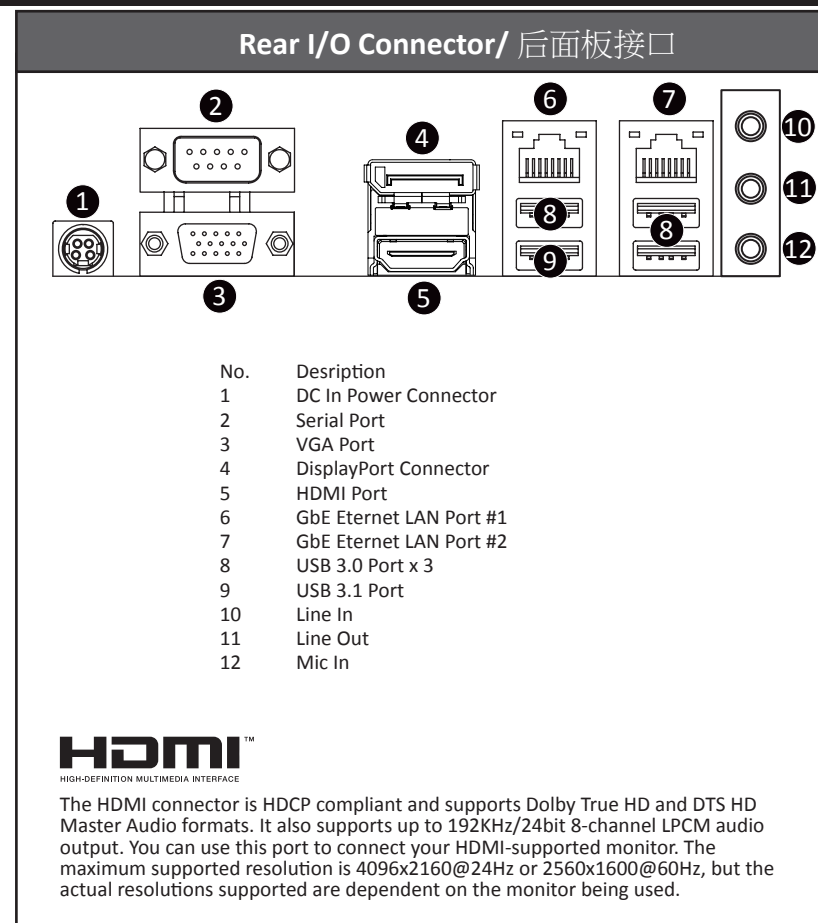
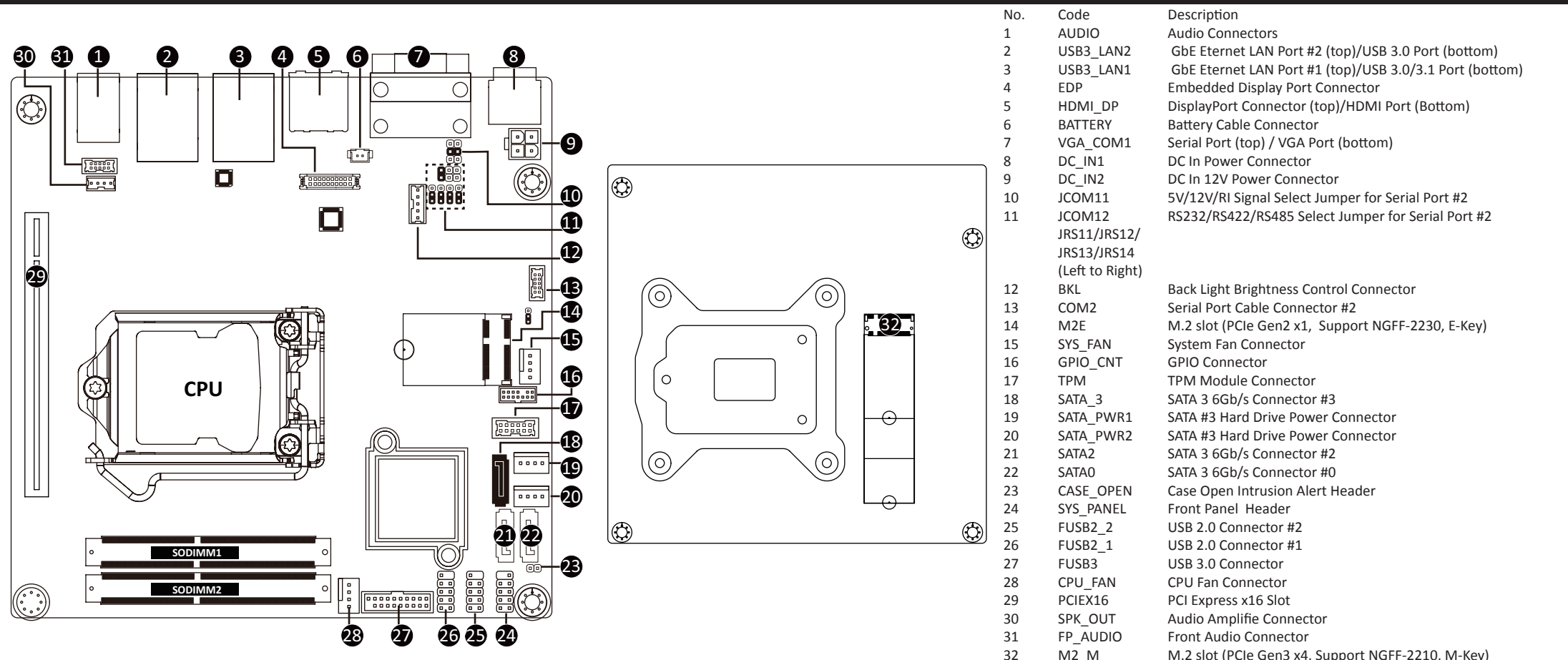


MCQ37AI Quick Reference Guide/ 快速测试参考指南



DC In 12V Power Connector	CPU FAN/ 风扇	Front Audio Connector/ 前置音频	Audio Amplifier Connector	M.2 Module																																																																																																																								
<table border="1"> <tr><th>No.</th><th>Pin Define</th></tr> <tr><td>1</td><td>GND</td></tr> <tr><td>2</td><td>GND</td></tr> <tr><td>3</td><td>+12V</td></tr> <tr><td>4</td><td>+12V</td></tr> </table>	No.	Pin Define	1	GND	2	GND	3	+12V	4	+12V	<table border="1"> <tr><th>No.</th><th>Pin Define</th></tr> <tr><td>1</td><td>+12V</td></tr> <tr><td>2</td><td>+12V</td></tr> <tr><td>3</td><td>Sense</td></tr> <tr><td>4</td><td>Speed Control</td></tr> </table>	No.	Pin Define	1	+12V	2	+12V	3	Sense	4	Speed Control	<table border="1"> <tr><th>No.</th><th>Pin Define</th><th>No.</th><th>Pin Define</th></tr> <tr><td>1</td><td>MIC_L</td><td>6</td><td>GND</td></tr> <tr><td>2</td><td>GND</td><td>7</td><td>FAUDIO_ID</td></tr> <tr><td>3</td><td>MIC_R</td><td>8</td><td>No Connect</td></tr> <tr><td>4</td><td>-ACZ_DET</td><td>9</td><td>HPOUT_L</td></tr> <tr><td>5</td><td>HPOUT_R</td><td>10</td><td>GND</td></tr> </table>	No.	Pin Define	No.	Pin Define	1	MIC_L	6	GND	2	GND	7	FAUDIO_ID	3	MIC_R	8	No Connect	4	-ACZ_DET	9	HPOUT_L	5	HPOUT_R	10	GND	<table border="1"> <tr><th>No.</th><th>Pin Define</th></tr> <tr><td>1</td><td>Speaker Out L+</td></tr> <tr><td>2</td><td>Speaker Out L-</td></tr> <tr><td>3</td><td>Speaker Out R-</td></tr> <tr><td>4</td><td>Speaker Out R+</td></tr> </table>	No.	Pin Define	1	Speaker Out L+	2	Speaker Out L-	3	Speaker Out R-	4	Speaker Out R+																																																																			
No.	Pin Define																																																																																																																											
1	GND																																																																																																																											
2	GND																																																																																																																											
3	+12V																																																																																																																											
4	+12V																																																																																																																											
No.	Pin Define																																																																																																																											
1	+12V																																																																																																																											
2	+12V																																																																																																																											
3	Sense																																																																																																																											
4	Speed Control																																																																																																																											
No.	Pin Define	No.	Pin Define																																																																																																																									
1	MIC_L	6	GND																																																																																																																									
2	GND	7	FAUDIO_ID																																																																																																																									
3	MIC_R	8	No Connect																																																																																																																									
4	-ACZ_DET	9	HPOUT_L																																																																																																																									
5	HPOUT_R	10	GND																																																																																																																									
No.	Pin Define																																																																																																																											
1	Speaker Out L+																																																																																																																											
2	Speaker Out L-																																																																																																																											
3	Speaker Out R-																																																																																																																											
4	Speaker Out R+																																																																																																																											
System Panel Header/ 前面板	SATA Connector/SATA 接口	Hard Drive Power Connector	GPIO Connector	Back Light Brightness Control Connector																																																																																																																								
<table border="1"> <tr><th>No.</th><th>Pin Define</th></tr> <tr><td>1</td><td>HDD LED+</td></tr> <tr><td>2</td><td>Power LED+</td></tr> <tr><td>3</td><td>HDD LED-</td></tr> <tr><td>4</td><td>Power LED-</td></tr> <tr><td>5</td><td>GND</td></tr> <tr><td>6</td><td>Power Button+</td></tr> <tr><td>7</td><td>Reset Button</td></tr> <tr><td>8</td><td>Power Button-</td></tr> <tr><td>9</td><td>No Connect</td></tr> <tr><td>10</td><td>No Pin</td></tr> </table>	No.	Pin Define	1	HDD LED+	2	Power LED+	3	HDD LED-	4	Power LED-	5	GND	6	Power Button+	7	Reset Button	8	Power Button-	9	No Connect	10	No Pin	<table border="1"> <tr><th>No.</th><th>Pin Define</th></tr> <tr><td>1</td><td>GND</td></tr> <tr><td>2</td><td>TXP</td></tr> <tr><td>3</td><td>TXN</td></tr> <tr><td>4</td><td>GND</td></tr> <tr><td>5</td><td>RXN</td></tr> <tr><td>6</td><td>RXP</td></tr> <tr><td>7</td><td>GND</td></tr> </table>	No.	Pin Define	1	GND	2	TXP	3	TXN	4	GND	5	RXN	6	RXP	7	GND	<table border="1"> <tr><th>No.</th><th>Pin Define</th></tr> <tr><td>1</td><td>+12V</td></tr> <tr><td>2</td><td>GND</td></tr> <tr><td>3</td><td>GND</td></tr> <tr><td>4</td><td>VCC</td></tr> </table>	No.	Pin Define	1	+12V	2	GND	3	GND	4	VCC	<table border="1"> <tr><th>No.</th><th>Pin Define</th><th>No.</th><th>Pin Define</th></tr> <tr><td>1</td><td>SOGP01</td><td>7</td><td>SOGP04</td></tr> <tr><td>2</td><td>SOGP11</td><td>8</td><td>SOGP14</td></tr> <tr><td>3</td><td>SOGP02</td><td>9</td><td>SMB_CLK</td></tr> <tr><td>4</td><td>SOGI2</td><td>10</td><td>SMB_DATA</td></tr> <tr><td>5</td><td>SOGP03</td><td>11</td><td>VCC</td></tr> <tr><td>6</td><td>SOGP13</td><td>12</td><td>GND</td></tr> </table>	No.	Pin Define	No.	Pin Define	1	SOGP01	7	SOGP04	2	SOGP11	8	SOGP14	3	SOGP02	9	SMB_CLK	4	SOGI2	10	SMB_DATA	5	SOGP03	11	VCC	6	SOGP13	12	GND	<table border="1"> <tr><th>No.</th><th>Pin Define</th></tr> <tr><td>1</td><td>VCC_LVDS</td></tr> <tr><td>2</td><td>PWM_OUT</td></tr> <tr><td>3</td><td>EN_BKLT</td></tr> <tr><td>4</td><td>GND</td></tr> <tr><td>5</td><td>+12V_LVDS</td></tr> </table>	No.	Pin Define	1	VCC_LVDS	2	PWM_OUT	3	EN_BKLT	4	GND	5	+12V_LVDS																																
No.	Pin Define																																																																																																																											
1	HDD LED+																																																																																																																											
2	Power LED+																																																																																																																											
3	HDD LED-																																																																																																																											
4	Power LED-																																																																																																																											
5	GND																																																																																																																											
6	Power Button+																																																																																																																											
7	Reset Button																																																																																																																											
8	Power Button-																																																																																																																											
9	No Connect																																																																																																																											
10	No Pin																																																																																																																											
No.	Pin Define																																																																																																																											
1	GND																																																																																																																											
2	TXP																																																																																																																											
3	TXN																																																																																																																											
4	GND																																																																																																																											
5	RXN																																																																																																																											
6	RXP																																																																																																																											
7	GND																																																																																																																											
No.	Pin Define																																																																																																																											
1	+12V																																																																																																																											
2	GND																																																																																																																											
3	GND																																																																																																																											
4	VCC																																																																																																																											
No.	Pin Define	No.	Pin Define																																																																																																																									
1	SOGP01	7	SOGP04																																																																																																																									
2	SOGP11	8	SOGP14																																																																																																																									
3	SOGP02	9	SMB_CLK																																																																																																																									
4	SOGI2	10	SMB_DATA																																																																																																																									
5	SOGP03	11	VCC																																																																																																																									
6	SOGP13	12	GND																																																																																																																									
No.	Pin Define																																																																																																																											
1	VCC_LVDS																																																																																																																											
2	PWM_OUT																																																																																																																											
3	EN_BKLT																																																																																																																											
4	GND																																																																																																																											
5	+12V_LVDS																																																																																																																											
USB 3.0 Header	USB 2.0 Header	Serial Port Cable Connector	TPM Connector/ 可信平台模块	TPM Module																																																																																																																								
<table border="1"> <tr><th>No.</th><th>Pin Define</th><th>No.</th><th>Pin Define</th></tr> <tr><td>1</td><td>Power</td><td>11</td><td>IntA_P2_D+</td></tr> <tr><td>2</td><td>IntA_P1_SSRX-</td><td>12</td><td>IntA_P2_D-</td></tr> <tr><td>3</td><td>IntA_P1_SSRX+</td><td>13</td><td>GND</td></tr> <tr><td>4</td><td>GND</td><td>14</td><td>IntA_P2_SSTX+</td></tr> <tr><td>5</td><td>IntA_P1_SSTX-</td><td>15</td><td>IntA_P2_SSTX-</td></tr> <tr><td>6</td><td>IntA_P1_SSTX+</td><td>16</td><td>GND</td></tr> <tr><td>7</td><td>GND</td><td>17</td><td>IntA_P2_SSRX+</td></tr> <tr><td>8</td><td>IntA_P1_D-</td><td>18</td><td>IntA_P2_SSRX-</td></tr> <tr><td>9</td><td>IntA_P1_D+</td><td>19</td><td>Power</td></tr> <tr><td>10</td><td>NC</td><td>20</td><td>No Pin</td></tr> </table>	No.	Pin Define	No.	Pin Define	1	Power	11	IntA_P2_D+	2	IntA_P1_SSRX-	12	IntA_P2_D-	3	IntA_P1_SSRX+	13	GND	4	GND	14	IntA_P2_SSTX+	5	IntA_P1_SSTX-	15	IntA_P2_SSTX-	6	IntA_P1_SSTX+	16	GND	7	GND	17	IntA_P2_SSRX+	8	IntA_P1_D-	18	IntA_P2_SSRX-	9	IntA_P1_D+	19	Power	10	NC	20	No Pin	<table border="1"> <tr><th>No.</th><th>Pin Define</th></tr> <tr><td>1</td><td>Power (5V)</td></tr> <tr><td>2</td><td>Power (5V)</td></tr> <tr><td>3</td><td>USB DX-</td></tr> <tr><td>4</td><td>USB DY-</td></tr> <tr><td>5</td><td>USB DX+</td></tr> <tr><td>6</td><td>USB DY+</td></tr> <tr><td>7</td><td>GND</td></tr> <tr><td>8</td><td>GND</td></tr> <tr><td>9</td><td>No Pin</td></tr> <tr><td>10</td><td>No Connect</td></tr> </table>	No.	Pin Define	1	Power (5V)	2	Power (5V)	3	USB DX-	4	USB DY-	5	USB DX+	6	USB DY+	7	GND	8	GND	9	No Pin	10	No Connect	<table border="1"> <tr><th>No.</th><th>Pin Define</th></tr> <tr><td>1</td><td>NRXD-</td></tr> <tr><td>2</td><td>NDCC-</td></tr> <tr><td>3</td><td>NDTRD-</td></tr> <tr><td>4</td><td>NTXD-</td></tr> <tr><td>5</td><td>NDSR-</td></tr> <tr><td>6</td><td>GND</td></tr> <tr><td>7</td><td>NCTS-</td></tr> <tr><td>8</td><td>NRTS-</td></tr> <tr><td>9</td><td>No Connect</td></tr> <tr><td>10</td><td>RI-</td></tr> </table>	No.	Pin Define	1	NRXD-	2	NDCC-	3	NDTRD-	4	NTXD-	5	NDSR-	6	GND	7	NCTS-	8	NRTS-	9	No Connect	10	RI-	<table border="1"> <tr><th>No.</th><th>Pin Define</th><th>No.</th><th>Pin Define</th></tr> <tr><td>1</td><td>CLK_24M_TPM</td><td>8</td><td>NC</td></tr> <tr><td>2</td><td>P_3V3_AUX</td><td>9</td><td>LPC_LAD_2</td></tr> <tr><td>3</td><td>RST_PLTRST</td><td>10</td><td>KEY</td></tr> <tr><td>4</td><td>P3V3</td><td>11</td><td>LPC_LAD_3</td></tr> <tr><td>5</td><td>LPC_LAD_0</td><td>12</td><td>GND</td></tr> <tr><td>6</td><td>IRQ_SERIAL</td><td>13</td><td>LPC_FRAME_N</td></tr> <tr><td>7</td><td>LPC_LAD_1</td><td>14</td><td>GND</td></tr> </table>	No.	Pin Define	No.	Pin Define	1	CLK_24M_TPM	8	NC	2	P_3V3_AUX	9	LPC_LAD_2	3	RST_PLTRST	10	KEY	4	P3V3	11	LPC_LAD_3	5	LPC_LAD_0	12	GND	6	IRQ_SERIAL	13	LPC_FRAME_N	7	LPC_LAD_1	14	GND	
No.	Pin Define	No.	Pin Define																																																																																																																									
1	Power	11	IntA_P2_D+																																																																																																																									
2	IntA_P1_SSRX-	12	IntA_P2_D-																																																																																																																									
3	IntA_P1_SSRX+	13	GND																																																																																																																									
4	GND	14	IntA_P2_SSTX+																																																																																																																									
5	IntA_P1_SSTX-	15	IntA_P2_SSTX-																																																																																																																									
6	IntA_P1_SSTX+	16	GND																																																																																																																									
7	GND	17	IntA_P2_SSRX+																																																																																																																									
8	IntA_P1_D-	18	IntA_P2_SSRX-																																																																																																																									
9	IntA_P1_D+	19	Power																																																																																																																									
10	NC	20	No Pin																																																																																																																									
No.	Pin Define																																																																																																																											
1	Power (5V)																																																																																																																											
2	Power (5V)																																																																																																																											
3	USB DX-																																																																																																																											
4	USB DY-																																																																																																																											
5	USB DX+																																																																																																																											
6	USB DY+																																																																																																																											
7	GND																																																																																																																											
8	GND																																																																																																																											
9	No Pin																																																																																																																											
10	No Connect																																																																																																																											
No.	Pin Define																																																																																																																											
1	NRXD-																																																																																																																											
2	NDCC-																																																																																																																											
3	NDTRD-																																																																																																																											
4	NTXD-																																																																																																																											
5	NDSR-																																																																																																																											
6	GND																																																																																																																											
7	NCTS-																																																																																																																											
8	NRTS-																																																																																																																											
9	No Connect																																																																																																																											
10	RI-																																																																																																																											
No.	Pin Define	No.	Pin Define																																																																																																																									
1	CLK_24M_TPM	8	NC																																																																																																																									
2	P_3V3_AUX	9	LPC_LAD_2																																																																																																																									
3	RST_PLTRST	10	KEY																																																																																																																									
4	P3V3	11	LPC_LAD_3																																																																																																																									
5	LPC_LAD_0	12	GND																																																																																																																									
6	IRQ_SERIAL	13	LPC_FRAME_N																																																																																																																									
7	LPC_LAD_1	14	GND																																																																																																																									

Speed LED Link/Activity LED

10/100/1000 LAN LED:

State	Description
Yellow On	1Gbps data rate
Green On	100Mbps data rate
Off	10Mbps data rate

Embedded Display Port connector	Jumper Settings/ 跳线设置	Memory Population Configuration/ 安装内存																																																																																																								
<table border="1"> <tr><th>No.</th><th>Pin Define</th><th>No.</th><th>Pin Define</th></tr> <tr><td>1</td><td>GND</td><td>11</td><td>eDP_1+</td></tr> <tr><td>2</td><td>GND</td><td>12</td><td>eDPAUX-</td></tr> <tr><td>3</td><td>eDP_0-</td><td>13</td><td>GND</td></tr> <tr><td>4</td><td>eDP_3-</td><td>14</td><td>eDPAUX+</td></tr> <tr><td>5</td><td>eDP_0+</td><td>15</td><td>eDP_2-</td></tr> <tr><td>6</td><td>eDP_3+</td><td>16</td><td>GND</td></tr> <tr><td>7</td><td>GND</td><td>17</td><td>eDP_2+</td></tr> <tr><td>8</td><td>-eDPSW</td><td>18</td><td>eDP_HDP_C</td></tr> <tr><td>9</td><td>eDP_1-</td><td>19</td><td>VCC_LVDS</td></tr> <tr><td>10</td><td>GND</td><td>20</td><td>VCC3_LVDS</td></tr> </table> <p>NOTE! Please ensure pin 8 is connected to Ground.</p>	No.	Pin Define	No.	Pin Define	1	GND	11	eDP_1+	2	GND	12	eDPAUX-	3	eDP_0-	13	GND	4	eDP_3-	14	eDPAUX+	5	eDP_0+	15	eDP_2-	6	eDP_3+	16	GND	7	GND	17	eDP_2+	8	-eDPSW	18	eDP_HDP_C	9	eDP_1-	19	VCC_LVDS	10	GND	20	VCC3_LVDS	<table border="1"> <tr><th>No.</th><th>Description</th></tr> <tr><td>1</td><td>5V/12V/RI Signal Select Jumper for Serial Port Header#1 (JCOM11)</td></tr> <tr><td>6 5</td><td>1-2 Close: 5V (Power COM)</td></tr> <tr><td>2 1</td><td>3-4 Close: RI (Stand COM)</td></tr> <tr><td>6 5</td><td>5-6 Close: 12V (power COM)</td></tr> <tr><td>2 1</td><td>2 RS232/RS422/RS485 Select Jumper for Serial Port Header#1 (JRS11/JRS12/JRS13/JRS14)</td></tr> <tr><td>2 1</td><td>1-2 Close: RS232</td></tr> <tr><td>2 1</td><td>3-4 Close: RS422</td></tr> <tr><td>2 1</td><td>5-6 Close: RS485</td></tr> </table> <table border="1"> <tr><th>Pin No.</th><th>Definition</th></tr> <tr><td>1</td><td>VCC</td></tr> <tr><td>2</td><td>RI1-/5V/12V</td></tr> <tr><td>3</td><td>NRI1-</td></tr> <tr><td>4</td><td>RI1-/5V/12V</td></tr> <tr><td>5</td><td>+12V</td></tr> <tr><td>6</td><td>RI1-/5V/12V</td></tr> </table> <table border="1"> <tr><th>Pin No.</th><th>Definition</th></tr> <tr><td>1</td><td>RXD232</td></tr> <tr><td>2</td><td>RXD2</td></tr> <tr><td>3</td><td>RXD422</td></tr> <tr><td>4</td><td>RXD2</td></tr> <tr><td>5</td><td>RXD485</td></tr> <tr><td>6</td><td>RXD2</td></tr> </table> <p>1-2 Close: RS422/RS485 2-3 Close: RS232 (Default setting)</p>	No.	Description	1	5V/12V/RI Signal Select Jumper for Serial Port Header#1 (JCOM11)	6 5	1-2 Close: 5V (Power COM)	2 1	3-4 Close: RI (Stand COM)	6 5	5-6 Close: 12V (power COM)	2 1	2 RS232/RS422/RS485 Select Jumper for Serial Port Header#1 (JRS11/JRS12/JRS13/JRS14)	2 1	1-2 Close: RS232	2 1	3-4 Close: RS422	2 1	5-6 Close: RS485	Pin No.	Definition	1	VCC	2	RI1-/5V/12V	3	NRI1-	4	RI1-/5V/12V	5	+12V	6	RI1-/5V/12V	Pin No.	Definition	1	RXD232	2	RXD2	3	RXD422	4	RXD2	5	RXD485	6	RXD2	<table border="1"> <tr><th>Memory Type</th><td>DDR4</td></tr> <tr><th>Voltage (V)</th><td>1.2V</td></tr> <tr><th>Connector</th><td>UDIMM</td></tr> <tr><th>Speed (MT/s)</th><td>2666 2400</td></tr> <tr><th>Channels</th><td>1,2</td></tr> <tr><th>DIMM Per Channel</th><td>1,2</td></tr> <tr><th>DIMM Capacity (GB)</th><td>2,4,6,8</td></tr> </table>	Memory Type	DDR4	Voltage (V)	1.2V	Connector	UDIMM	Speed (MT/s)	2666 2400	Channels	1,2	DIMM Per Channel	1,2	DIMM Capacity (GB)	2,4,6,8
No.	Pin Define	No.	Pin Define																																																																																																							
1	GND	11	eDP_1+																																																																																																							
2	GND	12	eDPAUX-																																																																																																							
3	eDP_0-	13	GND																																																																																																							
4	eDP_3-	14	eDPAUX+																																																																																																							
5	eDP_0+	15	eDP_2-																																																																																																							
6	eDP_3+	16	GND																																																																																																							
7	GND	17	eDP_2+																																																																																																							
8	-eDPSW	18	eDP_HDP_C																																																																																																							
9	eDP_1-	19	VCC_LVDS																																																																																																							
10	GND	20	VCC3_LVDS																																																																																																							
No.	Description																																																																																																									
1	5V/12V/RI Signal Select Jumper for Serial Port Header#1 (JCOM11)																																																																																																									
6 5	1-2 Close: 5V (Power COM)																																																																																																									
2 1	3-4 Close: RI (Stand COM)																																																																																																									
6 5	5-6 Close: 12V (power COM)																																																																																																									
2 1	2 RS232/RS422/RS485 Select Jumper for Serial Port Header#1 (JRS11/JRS12/JRS13/JRS14)																																																																																																									
2 1	1-2 Close: RS232																																																																																																									
2 1	3-4 Close: RS422																																																																																																									
2 1	5-6 Close: RS485																																																																																																									
Pin No.	Definition																																																																																																									
1	VCC																																																																																																									
2	RI1-/5V/12V																																																																																																									
3	NRI1-																																																																																																									
4	RI1-/5V/12V																																																																																																									
5	+12V																																																																																																									
6	RI1-/5V/12V																																																																																																									
Pin No.	Definition																																																																																																									
1	RXD232																																																																																																									
2	RXD2																																																																																																									
3	RXD422																																																																																																									
4	RXD2																																																																																																									
5	RXD485																																																																																																									
6	RXD2																																																																																																									
Memory Type	DDR4																																																																																																									
Voltage (V)	1.2V																																																																																																									
Connector	UDIMM																																																																																																									
Speed (MT/s)	2666 2400																																																																																																									
Channels	1,2																																																																																																									
DIMM Per Channel	1,2																																																																																																									
DIMM Capacity (GB)	2,4,6,8																																																																																																									